

# FRONT SEATS COVERS AND RAILS

81.01

1.	1619918	SEAT-FRONT COMPLETE R/H IP20 (*1)
	91703254 (79,42)	SEAT-FRONT COMPLETE R/H IP20 (*2)
	91703684 (27)	SEAT-FRONT COMPLETE R/H IP20
	91703712 (42)	SEAT-FRONT COMPLETE R/H IP20 (*5)
	91704209 (36)	SEAT-FRONT COMPLETE R/H IP20
2.	1619890	SEAT-FRONT COMPLETE R/H IP60 (*3)
	91703253 (79,42)	SEAT-FRONT COMPLETE R/H IP60 (*4)
	91703682 (27)	SEAT-FRONT COMPLETE R/H IP60
	91703714 (42)	SEAT-FRONT COMPLETE R/H IP60 (*5)
	91703911 (22)	SEAT-FRONT COMPLETE R/H IP60
	91703695 (31)	SEAT-FRONT COMPLETE R/H IP60
	91704207 (36)	SEAT-FRONT COMPLETE R/H IP60
	91704946 (58)	SEAT-FRONT COMPLETE R/H IP60
	91703995 (48)	SEAT-FRONT COMPLETE R/H IP60
	91705277 (50)	SEAT-FRONT COMPLETE R/H IP60
17.	1619919	SEAT-FRONT COMPLETE L/H IP20 (*1)
	91703256 (79,42)	SEAT-FRONT COMPLETE L/H IP20 (*2)
	91703685 (27)	SEAT-FRONT COMPLETE L/H IP20
	91703713 (42)	SEAT-FRONT COMPLETE L/H IP20 (*5)
	91704210 (36)	SEAT-FRONT COMPLETE L/H IP20
18.	1619891	SEAT-FRONT COMPLETE L/H IP60 (*3)
	91703255 (79,42)	SEAT-FRONT COMPLETE L/H IP60 (*4)
	91703683 (27)	SEAT-FRONT COMPLETE L/H IP60
	91703715 (42)	SEAT-FRONT COMPLETE L/H IP60 (*5)
	91703912 (22)	SEAT-FRONT COMPLETE L/H IP60
	91703696 (31)	SEAT-FRONT COMPLETE L/H IP60
	91704208 (36)	SEAT-FRONT COMPLETE L/H IP60
	91704947 (58)	SEAT-FRONT COMPLETE L/H IP60
	91703996 (48)	SEAT-FRONT COMPLETE L/H IP60
	91705276 (50)	SEAT-FRONT COMPLETE L/H IP60

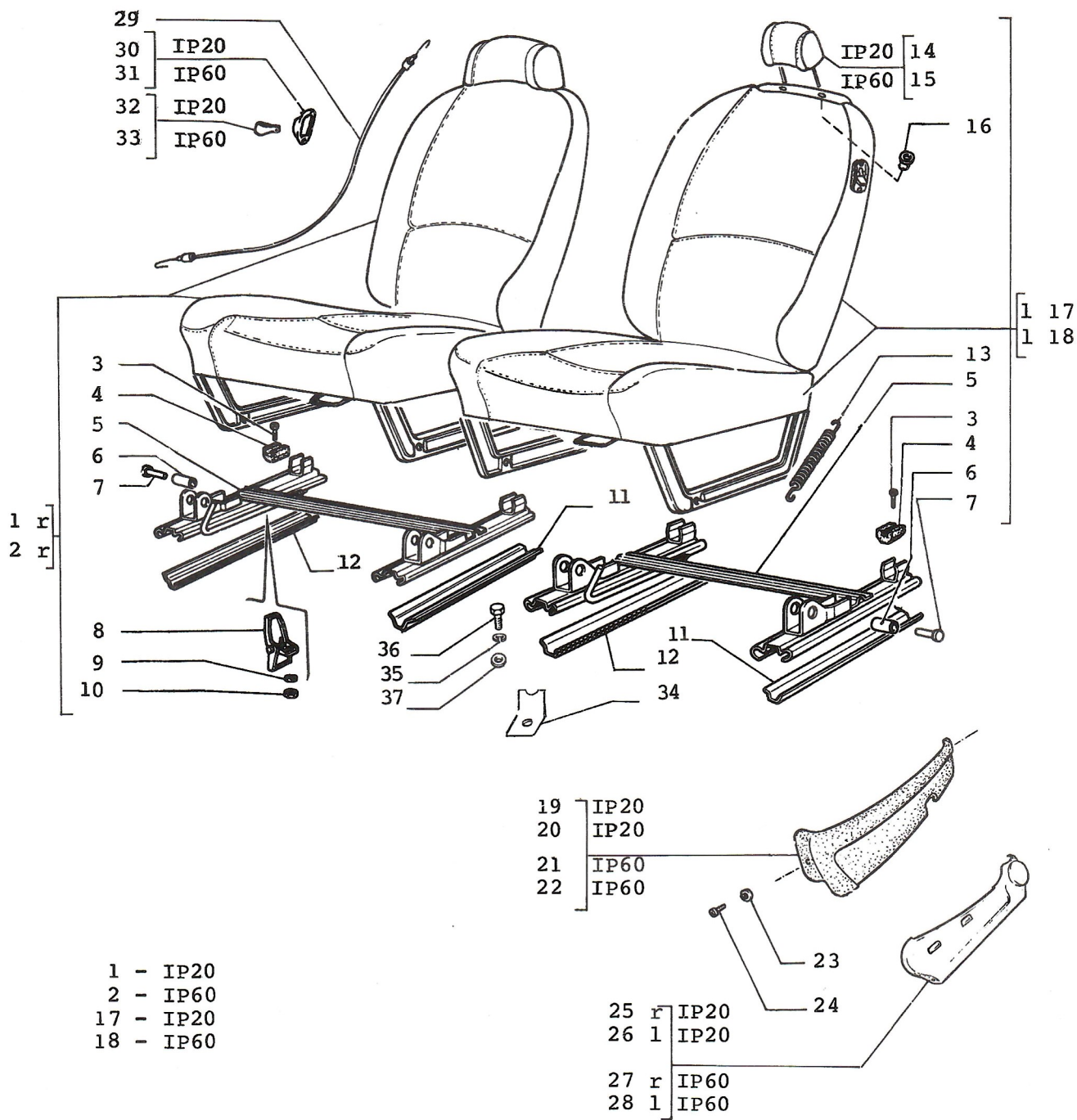
NOTE 1: 1 ST TYPE USED UP TO CAR No 49769

NOTE 2: 2 ND TYPE USED FROM CAR No 49770

NOTE 3: 1 ST TYPE USED UP TO CAR No 55155

NOTE 4: 2 ND TYPE USED FROM CAR No 55156

NOTE 5: SEAT FRAME WITH 180 mm DISTANCE BETWEEN HEADREST GUIDES



# FRONT SEATS COVERS AND RAILS

81.01

3.	17671001	SCREW - SEAT GUIDE
4.	4094308	BUMPER - SEAT GUIDE
5.	4413616	REINFORCEMENT - FRONT SEAT
6.	4055378	SLEEVE - SEAT GUIDE
7.	4007478	PIN - SEAT GUIDE
8.	4385093	LOCK - SEAT GUIDE
9.	10516470	WASHER - LOCK
10.	15896211	NUT
11.	4413628	GUIDE - FRONT SEAT
12.	4457256	GUIDE - FRONT SEAT
13.	4383295	SPRING
	1618016	SPRING
14.	1619949	HEADREST IP20 (*1)
	46622065	HEADREST IP20 (*2)
	46624002 (27,42,36)	HEADREST IP20 (*5)
15.	1619951	HEADREST IP60 (*3)
	46622067	HEADREST IP60 (*4)
	46624001 (27,42,36)	HEADREST IP60 (*5)
	46625360 (22)	HEADREST IP60
	46623123 (31)	HEADREST IP60
	46630992 (58)	HEADREST IP60
	46626316 (48)	HEADREST IP60
16.	4202412	GUIDE
	46625628 (22)	GUIDE
19.	46620882	PROTECTION SKELETON SEAT R/H IP20
20.	46620883	PROTECTION SKELETON SEAT L/H IP20
21.	46621516	PROTECTION SKELETON SEAT R/H IP60
22.	46621517	PROTECTION SKELETON SEAT L/H IP60
23.	13336307	WASHER
24.	15661707	SCREW
	15690707	SCREW M 6 x 16
25.	46623110 (27)	PROTECTION SKELETON SEAT R/H IP20
26.	46623111 (27)	PROTECTION SKELETON SEAT L/H IP20
27.	46623112 (27)	PROTECTION SKELETON SEAT R/H IP60
28.	46623113 (27)	PROTECTION SKELETON SEAT L/H IP60
29.	4385095	CABLE - RELEASE/SEAR BACK SEAT
30.	46620114	GUIDE IP20
31.	46620115	GUIDE IP60
32.	46620116	HANDLE IP20
33.	46620117	HANDLE IP60
34.	1618267	BRACKET
35.	10571777 (79,42,36)	WASHER
	12647001 (27,31)	WASHER
36.	16043427 (79,42,36)	SCREW
	14359221 (27,31)	SCREW
37.	24910871 (27,31)	WASHER

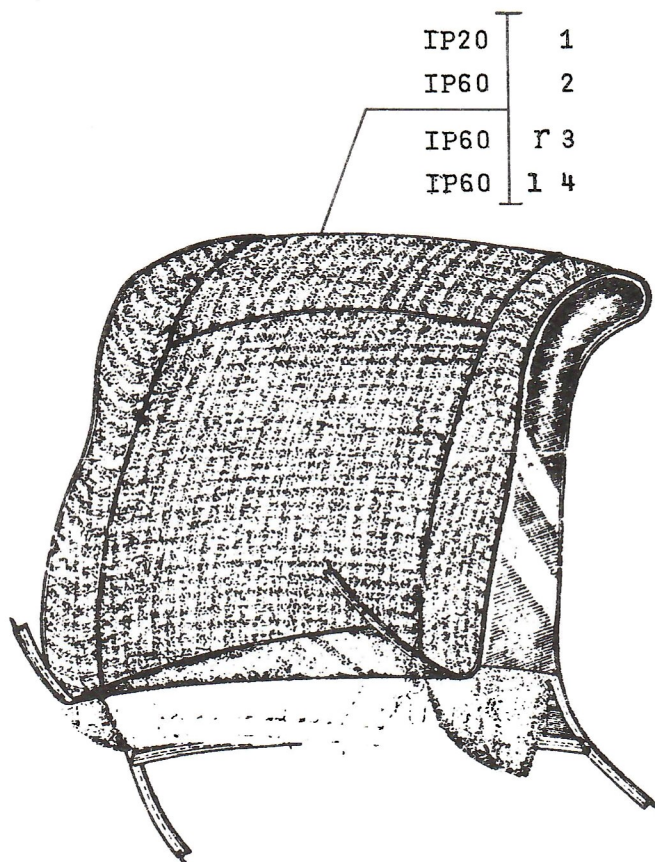
NOTE 1: 1 ST TYPE USED UP TO CAR No 49769

NOTE 2: 2 ND TYPE USED FROM CAR No 49770

NOTE 3: 1 ST TYPE USED UP TO CAR No 55155

NOTE 4: 2 ND TYPE USED FROM CAR No 55156

NOTE 5: SEAT FRAME WITH 180 mm DISTANCE BETWEEN HEADREST GUIDES



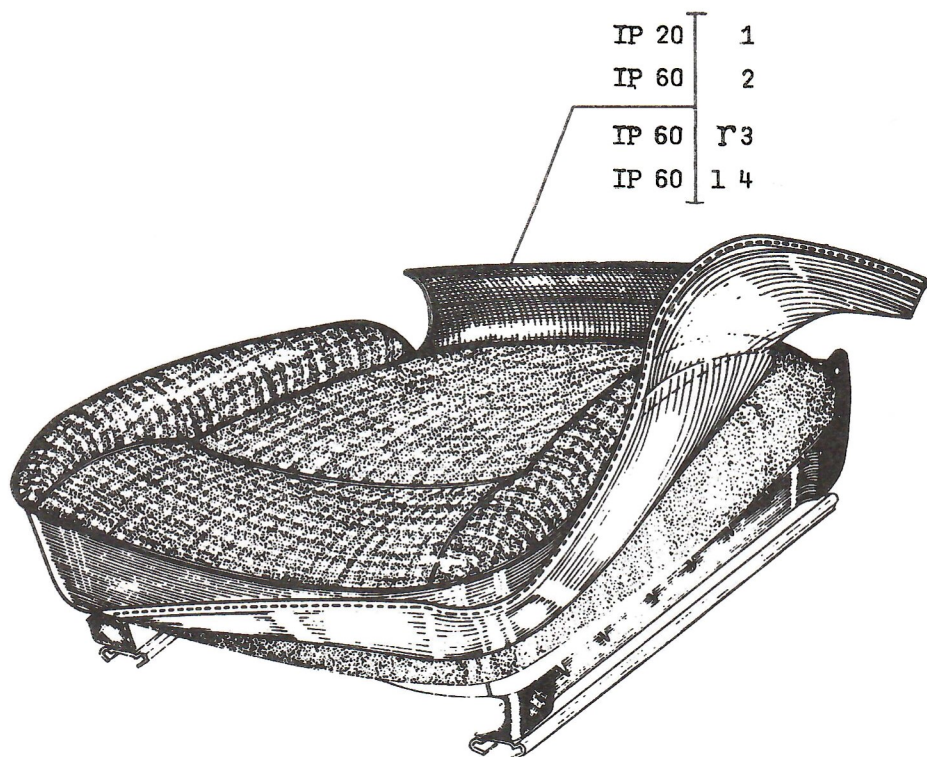
- |    |                  |                             |
|----|------------------|-----------------------------|
| 1. | 1619924          | COVER - SEAT BACK IP20 (*1) |
|    | 46621958 (79,42) | COVER - SEAT BACK IP20 (*2) |
|    | 46623118 (27)    | COVER - SEAT BACK IP20      |
|    | 46627577 (36)    | COVER - SEAT BACK IP20      |
| 2. | 1619892          | COVER - SEAT BACK IP60 (*3) |
|    | 46621960 (79,42) | COVER - SEAT BACK IP60 (*4) |
|    | 46623119 (27)    | COVER - SEAT BACK IP60      |
|    | 46625358 (22)    | COVER - SEAT BACK IP60      |
|    | 46627576 (36)    | COVER - SEAT BACK IP60      |
|    | 46631868 (58)    | COVER - SEAT BACK IP60      |
|    | 46626363 (48)    | COVER - SEAT BACK IP60      |
|    | 46630998         | COVER - SEAT BACK IP60      |
| 3. | 46623430 (31)    | COVER - SEAT BACK IP60 R/H  |
| 4. | 46625739 (31)    | COVER - SEAT BACK IP60 L/H  |

NOTE 1: 1 ST TYPE USED UP TO CAR No 49769

NOTE 2: 2 ND TYPE USED FROM CAR No 49770

NOTE 3: 1 ST TYPE USED UP TO CAR No 55155

NOTE 4: 2 ND TYPE USED FROM CAR No 55156



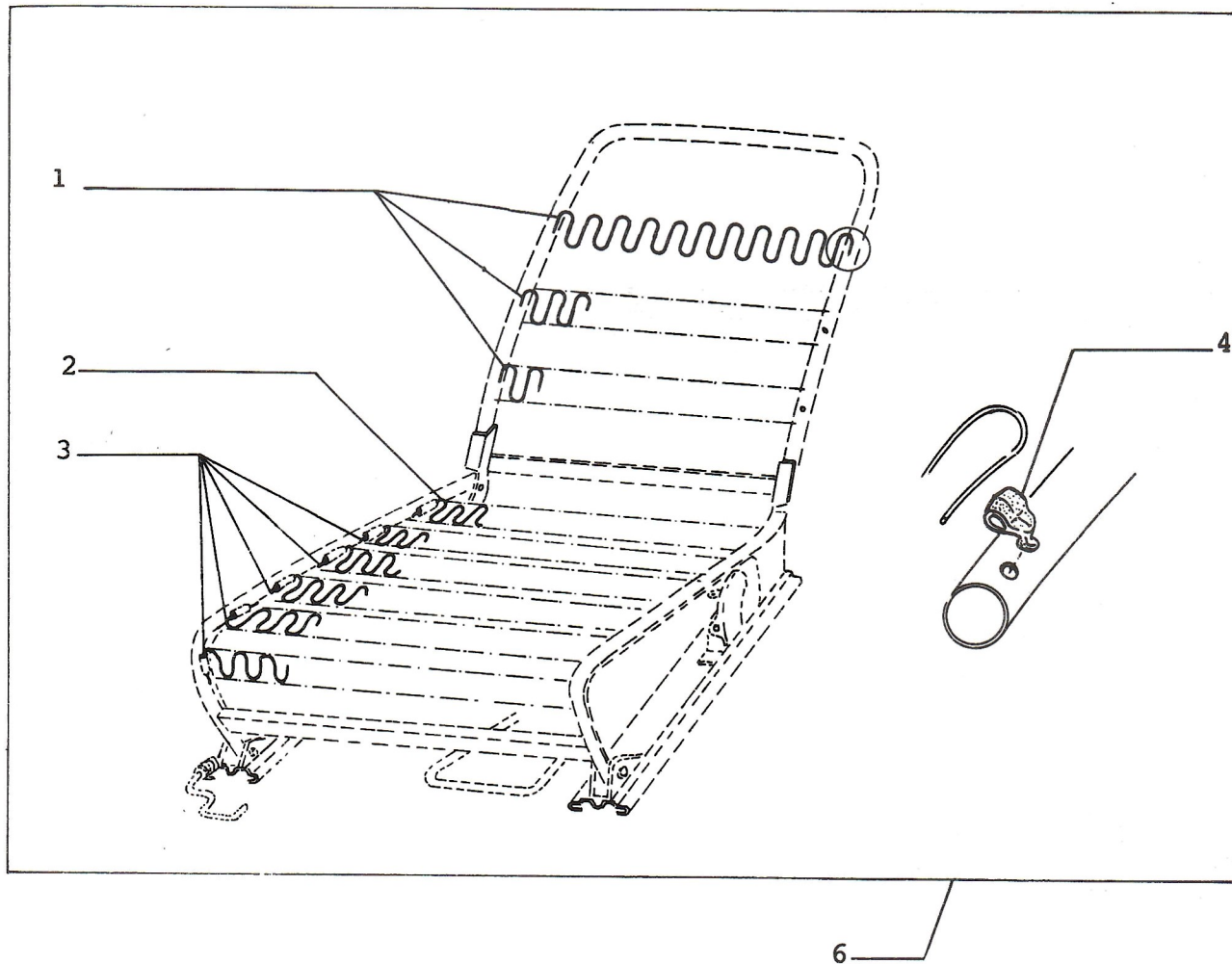
- |    |                  |                         |
|----|------------------|-------------------------|
| 1. | 1619926          | COVER CUSHION IP20 (*1) |
|    | 46621968 (79,42) | COVER CUSHION IP20 (*2) |
|    | 46623120 (27)    | COVER CUSHION IP20      |
|    | 46627580 (36)    | COVER CUSHION IP20      |
| 2. | 1619903          | COVER CUSHION IP60 (*3) |
|    | 46621969 (79,42) | COVER CUSHION IP60 (*4) |
|    | 46623121 (27)    | COVER CUSHION IP60      |
|    | 46625359 (22)    | COVER CUSHION IP60      |
|    | 46627579 (36)    | COVER CUSHION IP60      |
|    | 46631871 (58)    | COVER CUSHION IP60      |
|    | 46626318 (48)    | COVER CUSHION IP60      |
|    | 46635566 (50)    | COVER CUSHION IP60      |
| 3. | 46623432 (31)    | COVER CUSHION IP60 R/H  |
| 4. | 46625740 (31)    | COVER CUSHION IP60 L/H  |

NOTE 1: 1 ST TYPE USED UP TO CAR No 49769

NOTE 2: 2 ND TYPE USED FROM CAR No 49770

NOTE 3: 1 ST TYPE USED UP TO CAR No 55155

NOTE 4: 2 ND TYPE USED FROM CAR No 55156



SEAT FRAME

81,01/3

JULY 1991.

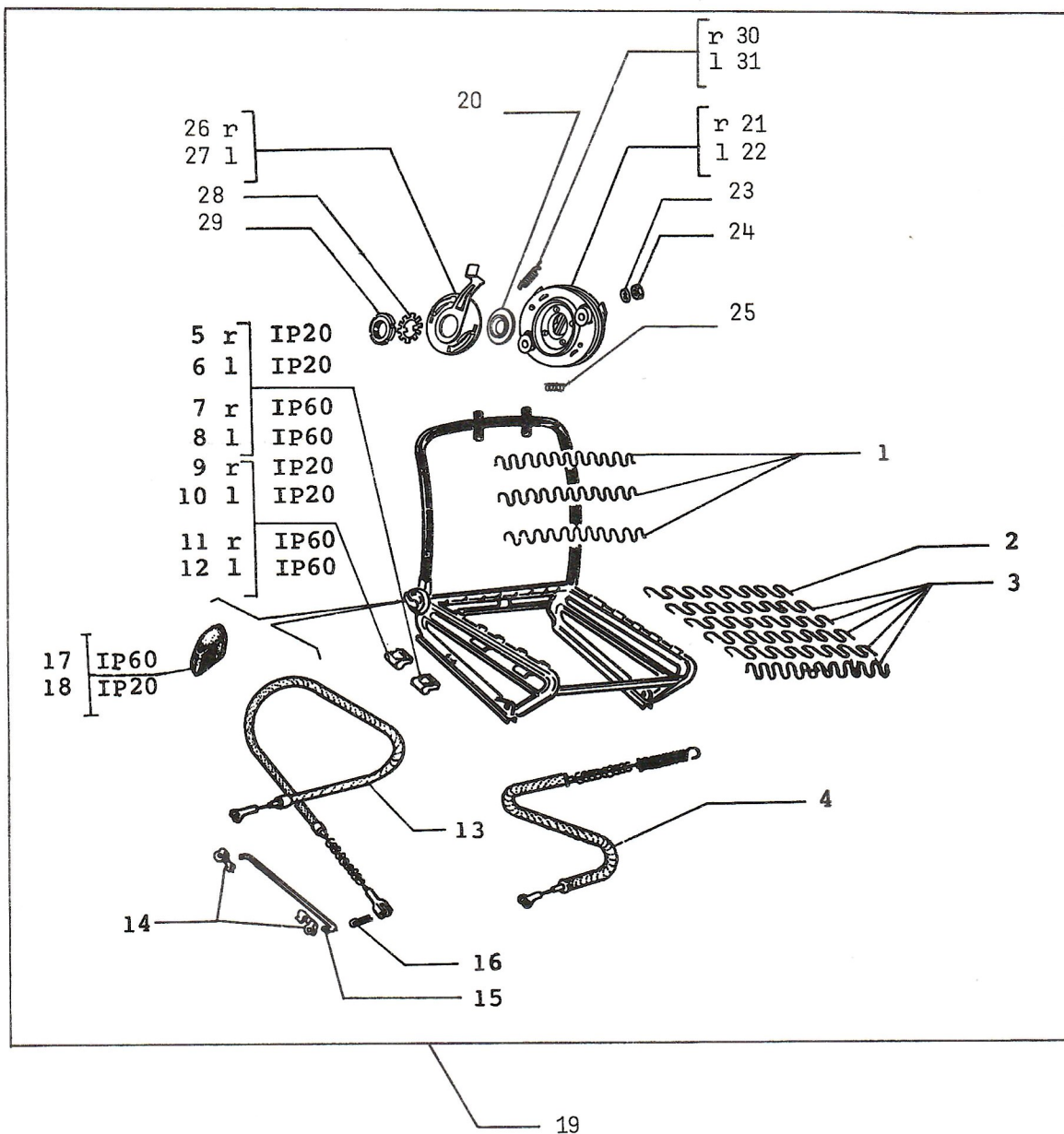
## SEAT FRAME

81.01/3

1.	46620610	SPRING SKELETON BACK SEAT
2.	4138104	SPRING SKELETON CUSHION SEAT
3.	46621099	SPRING SKELETON CUSHION SEAT
4.	4205319	HOOK SPRING SKELETON SEAT
5.	46620340	PIN
6.	46620327	SEAT FRAME R/H (*1)
	46623760	SEAT FRAME R/H (*2)
	46620328	SEAT FRAME L/H (*1)
	46623761	SEAT FRAME L/H (*2)
	46628546 (58)	SEAT FRAME L/H
	46628545 (58)	SEAT FRAME R/H
	46635472 (50)	SEAT FRAME R/H
	46635473 (50)	SEAT FRAME L/H

NOTE 1: 1 ST SEAT FRAME WITH 130 MM DISTANCE BETWEEN HEADREST GUIDES

NOTE 2: 2 ND SEAT FRAME WITH 180 MM DISTANCE BETWEEN HEADREST GUIDES

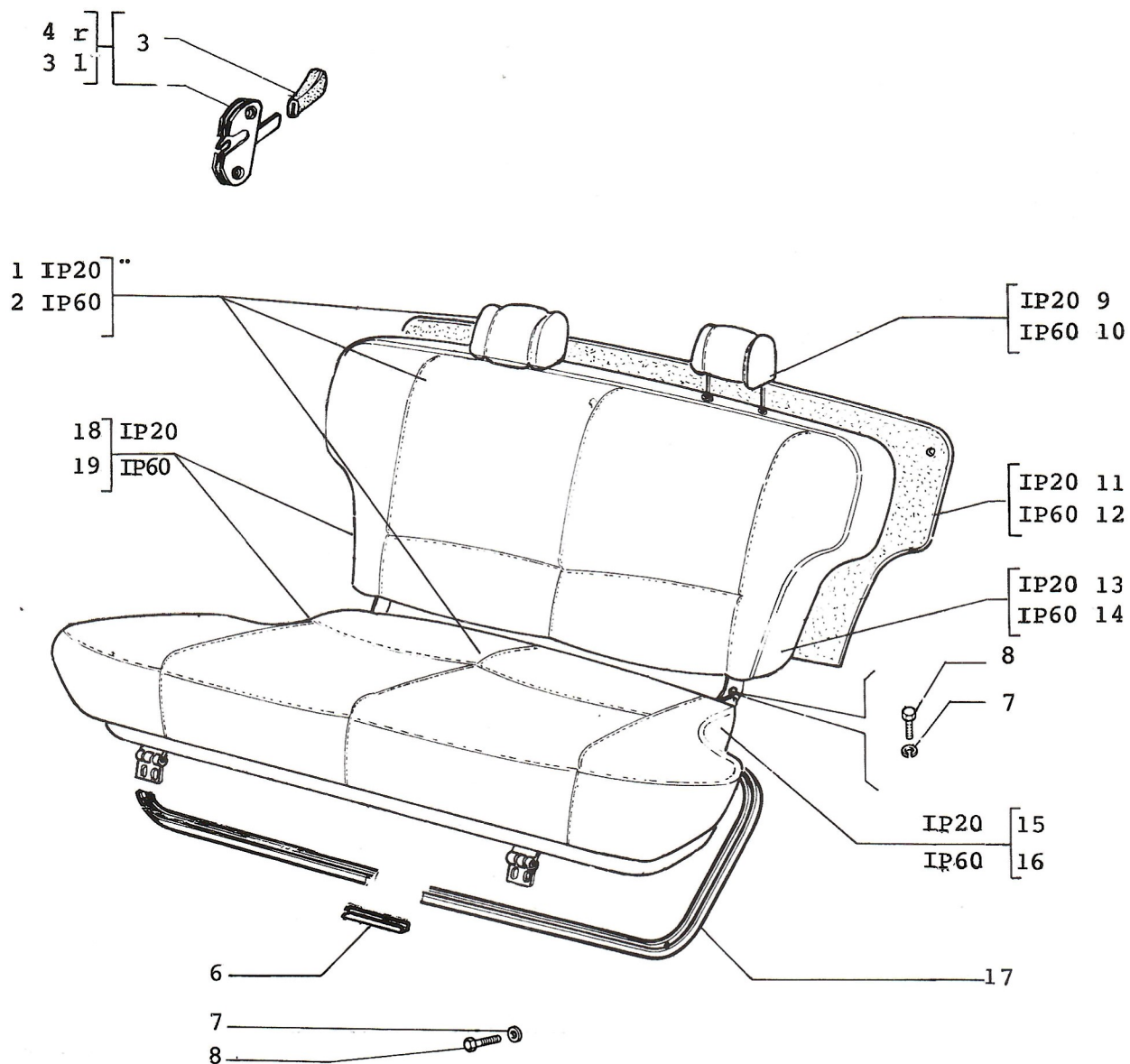


## SEAT FRAME

81.01/4

1.	46620610 (27,31)	SPRING SKELETON BACK SEAT
2.	4138104 (27,31)	SPRING SKELETON BACK SEAT
3.	4259824 (27,31)	SPRING SKELETON CUSHION SEAT
4.	1453516 (27,31)	CABLE RELEASE
5.	46623958 (27,31)	HANDLE R/H IP20 (*1)
6.	46623959 (27,31)	HANDLE L/H IP20 (*1)
7.	46623962 (27,31)	HANDLE R/H IP60 (*1)
8.	46623963 (27,31)	HANDLE L/H IP60 (*1)
9.	46623964 (27,31)	HANDLE R/H IP20 (*1)
10.	46623965 (27,31)	HANDLE L/H IP20 (*1)
11.	46623954 (27,31)	HANDLE R/H IP60 (*1)
12.	46623955 (27,31)	HANDLE L/H IP60 (*1)
13.	1453515 (27,31)	CABLE RELEASE
14.	814838 (27,31)	FISHPLATE
15.	1453506 (27,31)	LEVER
16.	10733601 (27,31)	PIN
17.	46624643 (27,31)	HANDLE IP60 (*1)
18.	46625259 (27,31)	HANDLE IP20 (*1)
19.	1453650 (27)	SEAT - FRAME R/H
	1453540 (27)	SEAT - FRAME R/H
	1453651 (27)	SEAT - FRAME L/H
	1453541 (27)	SEAT - FRAME L/H
	1453684 (31)	SEAT - FRAME R/H
	1453685 (31)	SEAT - FRAME L/H
20.	1453658 (27)	BUSH
21.	1453567 (27)	GEAR MECHANISM R/H
22.	1453568 (27)	GEAR MECHANISM L/H
23.	10615671 (27)	WASHER
24.	16102411 (27)	NUT
25.	1453525 (27)	SPRING - GEAR MECHANISM
26.	1453538 (27)	LEVER ACTIVATING - GEAR MECHANISM R/H
27.	1453539 (27)	LEVER ACTIVATING - GEAR MECHANISM L/H
28.	1453533 (27)	WASHERLOCK
29.	1453548 (27)	NUT - GEAR MECHANISM
30.	1453527 (27)	SPRING R/H
31.	1453528 (27)	SPRING L/H

NOTE 1: NOT FITTED IN SEAT FRAME ASSY



# REAR SEATS, COVERS AND RELEASE LEVERS

81.02

1.	1619966	SEAT - REAR COMPLETE IP20 (*1)
	91703581	SEAT - REAR COMPLETE IP20 (*2)
	91703688 (27)	SEAT - REAR COMPLETE
2.	1619967	SEAT - REAR COMPLETE IP60 (*3)
	91703582	SEAT - REAR COMPLETE IP60 (*4)
	91703689 (27)	SEAT - REAR COMPLETE
	91703698 (31)	SEAT - REAR COMPLETE IP60
3.	4176182	HANDLE - REAR SEATS
4.	4437916	LATCH - SEAT R/H
5.	4437917	LATCH - SEAT L/H
6.	4363024	SLEEVE - SHANNEL/REAR SEAT
7.	12605570	WASHER
8.	13279417	SCREW
9.	1619949	HEADREST IP20
	46622065	HEADREST IP20
	46624002 (27)	HEADREST
10.	1619951	HEADREST IP60
	46622067	HEADREST IP60
	46624001 (27)	HEADREST IP60
	46624120 (31)	HEADREST IP60
11.	1619882	PANEL - SEAT BACK
12.	46620141	PANEL - SEAT BACK
13.	1619970	SEAT - BACK COMPLETE IP20 (*1)
	91703585	SEAT - BACK COMPLETE IP20 (*2)
	46602239 (27)	SEAT - BACK COMPLETE IP20
	46602241 (42)	SEAT - BACK COMPLETE IP20
	91704112 (27)	SEAT - BACK COMPLETE IP20 (*5)
	91704109 (42)	SEAT - BACK COMPLETE IP20 (*5)
14.	1619971	SEAT - BACK COMPLETE IP60 (*3)
	91703586	SEAT - BACK COMPLETE IP60 (*4)
	46602240 (27)	SEAT - BACK COMPLETE IP60
	46602242 (42)	SEAT - BACK COMPLETE IP60
	46602416 (22)	SEAT - BACK COMPLETE IP60
	46623444 (31)	SEAT - BACK COMPLETE IP60
	91704111 (27)	SEAT - BACK COMPLETE IP60 (*5)
	91704110 (42)	SEAT - BACK COMPLETE IP60 (*5)
	91704113 (31)	SEAT - BACK COMPLETE IP60 (*5)
	46632715 (58)	SEAT - BACK COMPLETE IP60 (*5)
15.	1619968	CUSHION - SEAT IP20 (*1)
	91703583	CUSHION - SEAT IP20 (*2)
	46602237 (27)	CUSHION - SEAT IP20
16.	1619969	CUSHION - SEAT IP60 (*3)
	91703584	CUSHION - SEAT IP60 (*4)
	46602238 (27)	CUSHION - SEAT IP60
	46602417 (22)	CUSHION - SEAT IP60
	46623442 (31)	CUSHION - SEAT IP60
	46632712 (58)	CUSHION - SEAT IP60
17.	4427581	CHANNEL - REAR SEAT
18.	91703686 (42)	SEAT - REAR COMPLETE IP20
	91704116 (27)	SEAT - REAR COMPLETE IP20 (*5)
	91704114 (42)	SEAT - REAR COMPLETE IP20 (*5)
19.	91703687 (42)	SEAT - REAR COMPLETE IP60
	91703913 (22)	SEAT - REAR COMPLETE IP60
	91704115 (42)	SEAT - REAR COMPLETE IP60 (*5)
	91704117 (27)	SEAT - REAR COMPLETE IP60 (*5)
	91704118 (31)	SEAT - REAR COMPLETE IP60 (*5)
	91704959 (58)	SEAT - REAR COMPLETE IP60
	91705302 (50)	SEAT - REAR COMPLETE IP60

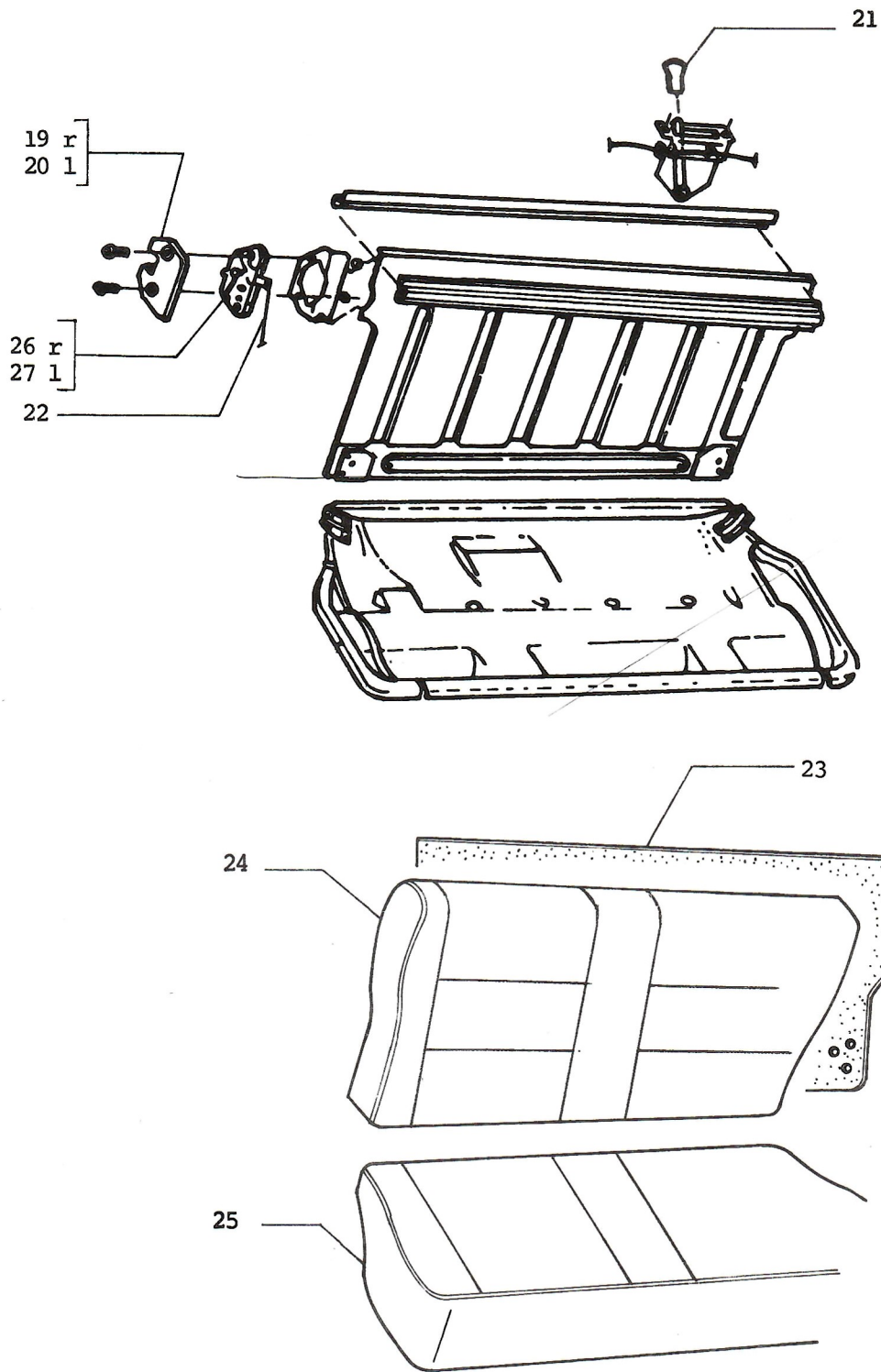
NOTE 1: 1 ST TYPE USED UP TO CAR No 49769

NOTE 2: 2 ND TYPE USED FROM CAR No 49770

NOTE 3: 1 ST TYPE USED UP TO CAR No 55155

NOTE 4: 2 ND TYPE USED FROM CAR No 55156

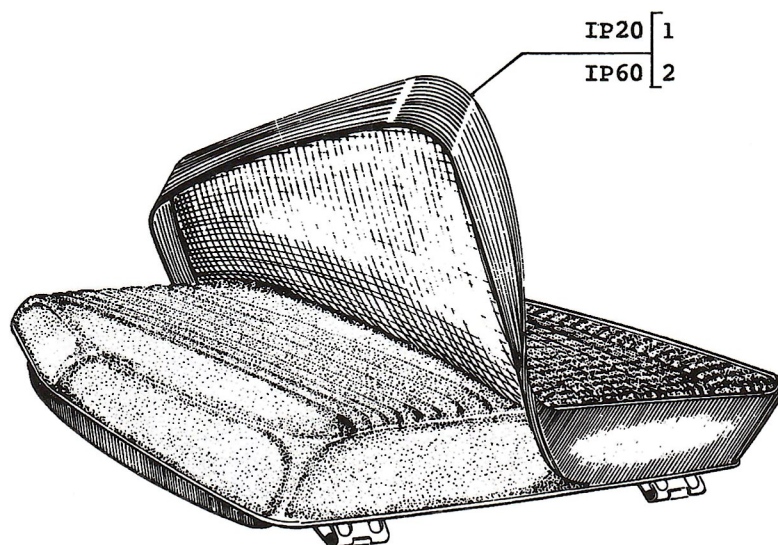
NOTE 5: CANCELLED ITEM HEADREST



## REAR SEATS, COVERS AND RELEASE LEVERS

81.02

19.	46630225 (48)	SEAT-LATCH COVER R/H
20.	46630224 (48)	SEAT-LATCH COVER L/H
21.	46620117	HANDLE - REAR SEATS
22.	46630956 (48)	CABLE/LATCH - SEAT
23.	46629531 (48)	SEAT - BACK FRAME
24.	46626631 (48)	SEAT - BACK COMPLETE IP60
25.	46626629 (48)	CUSHION - SEAT IP60
26.	4437918 (48)	LATCH - SEAT R/H
27.	4363896 (48)	LATCH - SEAT L/H



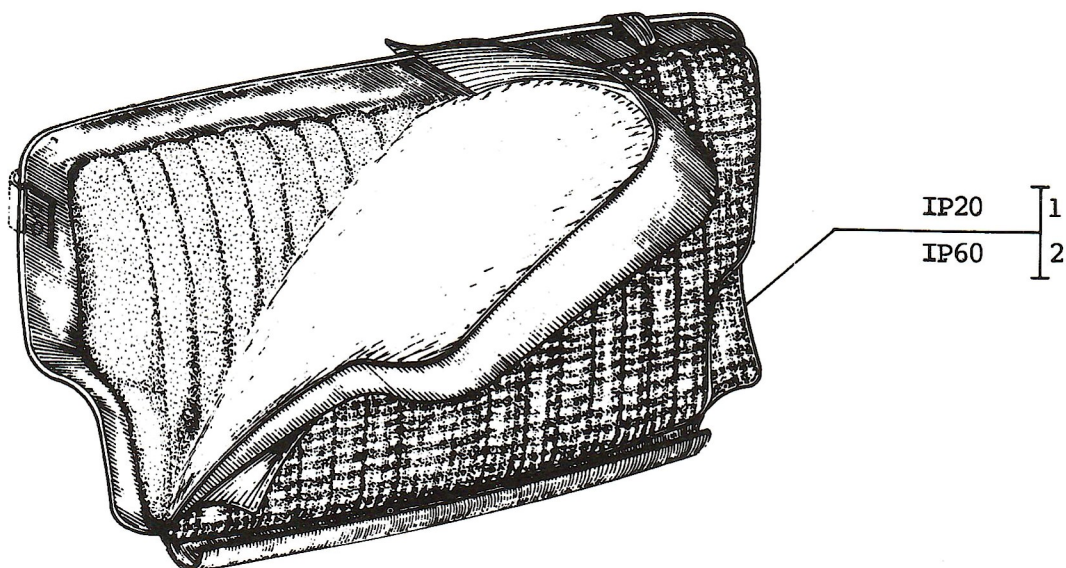
1.	1619974	COVER - CUSHION IP20 (*1)
	46621901	COVER - CUSHION IP20 (*2)
	46623947 (27)	COVER - CUSHION IP20
2.	1619975	COVER - CUSHION IP60 (*3)
	46621902	COVER - CUSHION IP60 (*4)
	46623948 (27)	COVER - CUSHION IP60
	46623131 (31)	COVER - CUSHION IP60
	46632705 (58)	COVER - CUSHION IP60
	46625363 (22)	COVER - CUSHION IP60
	46626256 (48)	COVER - CUSHION IP60
	46631083 (50)	COVER - CUSHION IP60

NOTE 1: 1 ST TYPE USED UP TO CAR No 49769

NOTE 2: 2 ND TYPE USED FROM CAR No 49770

NOTE 3: 1 ST TYPE USED UP TO CAR No 55155

NOTE 4: 2 ND TYPE USED FROM CAR No 55156



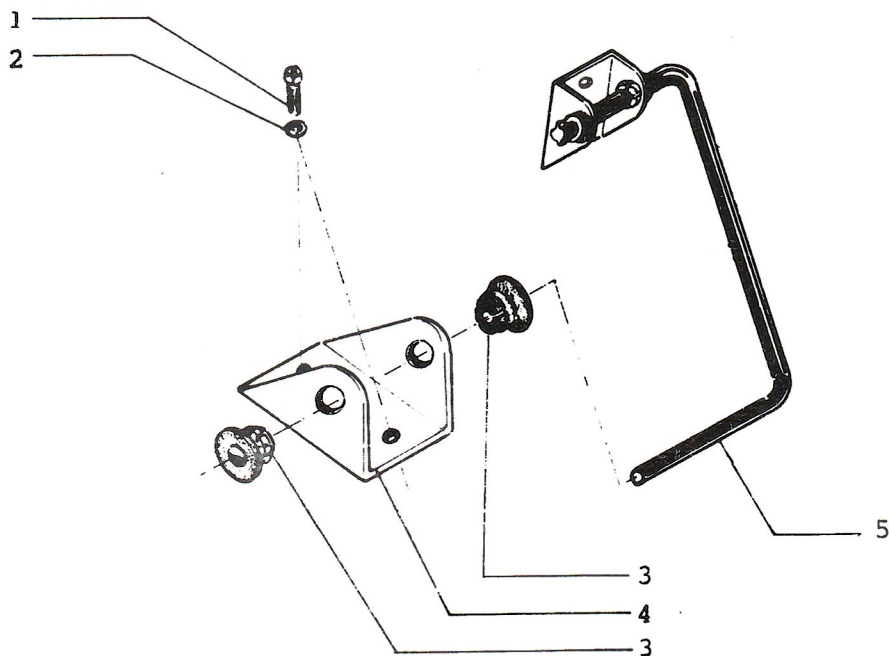
1.	1619972	COVER - SEAT BACK IP 20 (*1)
	46621891	COVER - SEAT BACK IP 20 (*2)
	46623945 (27)	COVER - SEAT BACK IP 20
2.	1619973	COVER - SEAT BACK IP 60 (*3)
	46621892	COVER - SEAT BACK IP 60 (*4)
	46623946 (27)	COVER - SEAT BACK IP 60
	46625362 (22)	COVER - SEAT BACK IP 60
	46623129 (31)	COVER - SEAT BACK IP 60
	46632702 (58)	COVER - SEAT BACK IP 60
	46626265 (48)	COVER - SEAT BACK IP 60
	46631080 (50)	COVER-SEAT BACK IP60

NOTE 1: 1 ST TYP USED UP TO CAR No 49769

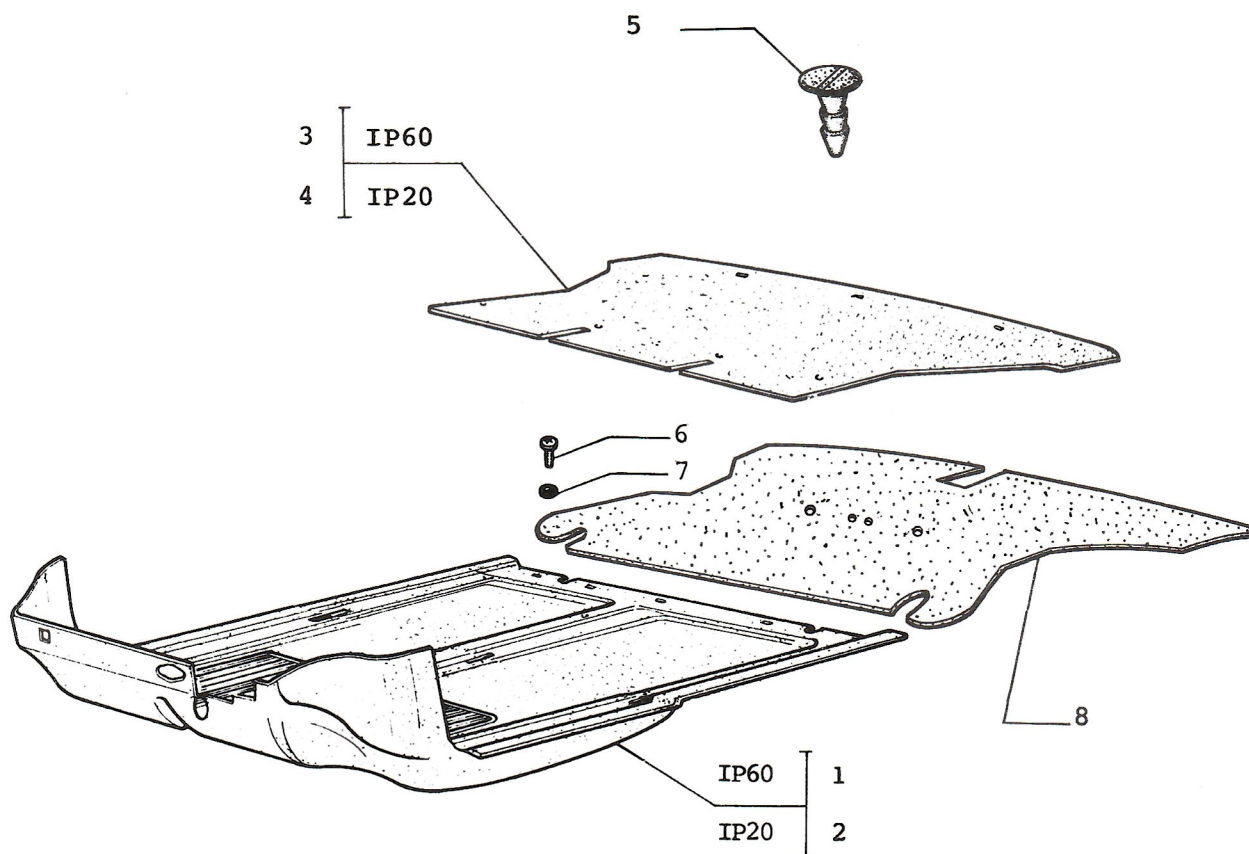
NOTE 2: 2 ND TYPE USED FROM CAR No 49770

NOTE 3: 1 ST TYPE USED UP TO CAR No 55155

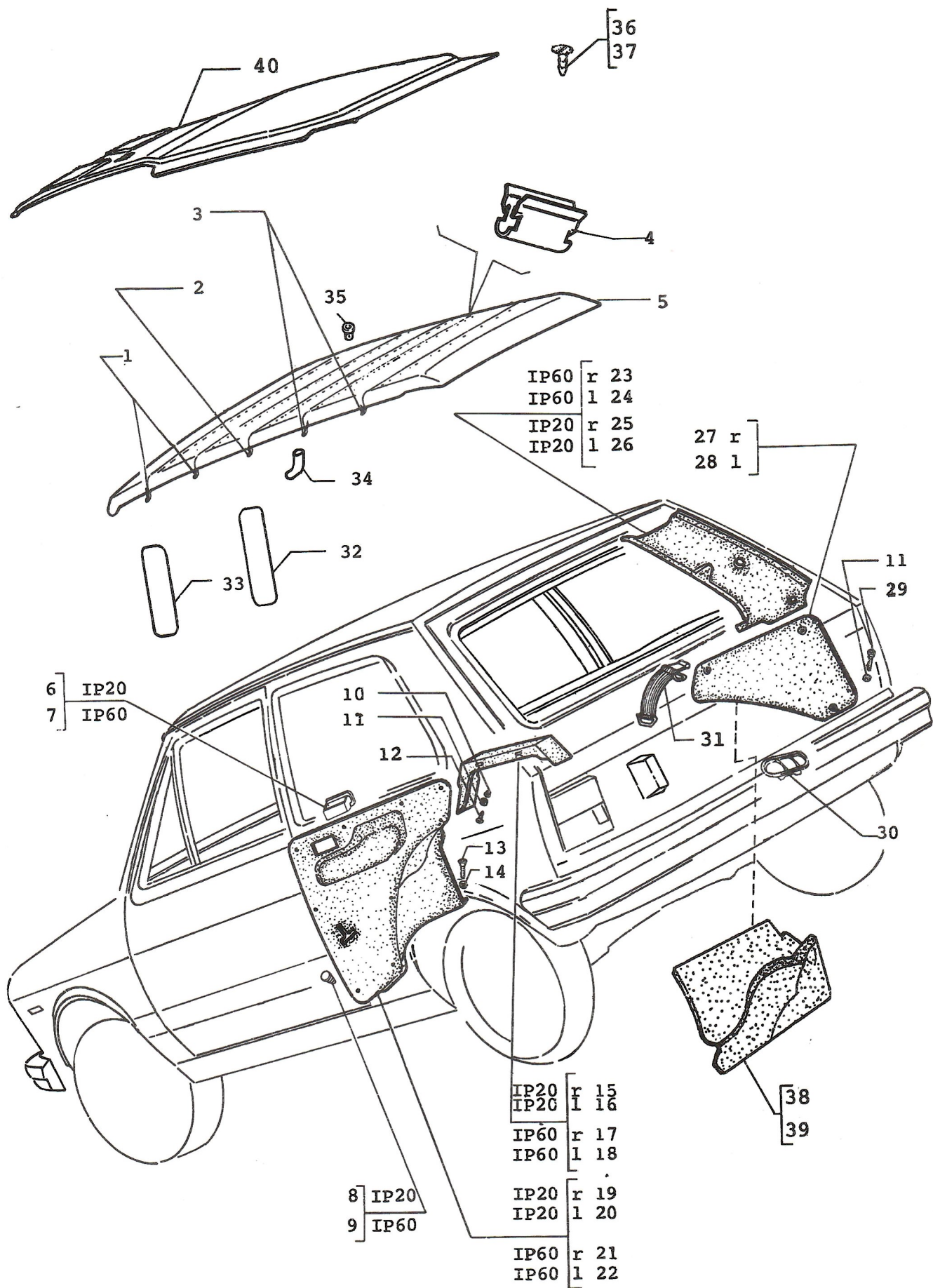
NOTE 4: 2 ND TYPE USED FROM CAR No 55156



- |    |          |                         |
|----|----------|-------------------------|
| 1. | 13279411 | SCREW                   |
| 2. | 10519601 | WASHER                  |
| 3. | 4392448  | BUSHING                 |
| 4. | 4444359  | BRACKET - RR/SEAT LEVER |
| 5. | 4427566  | LEVER                   |



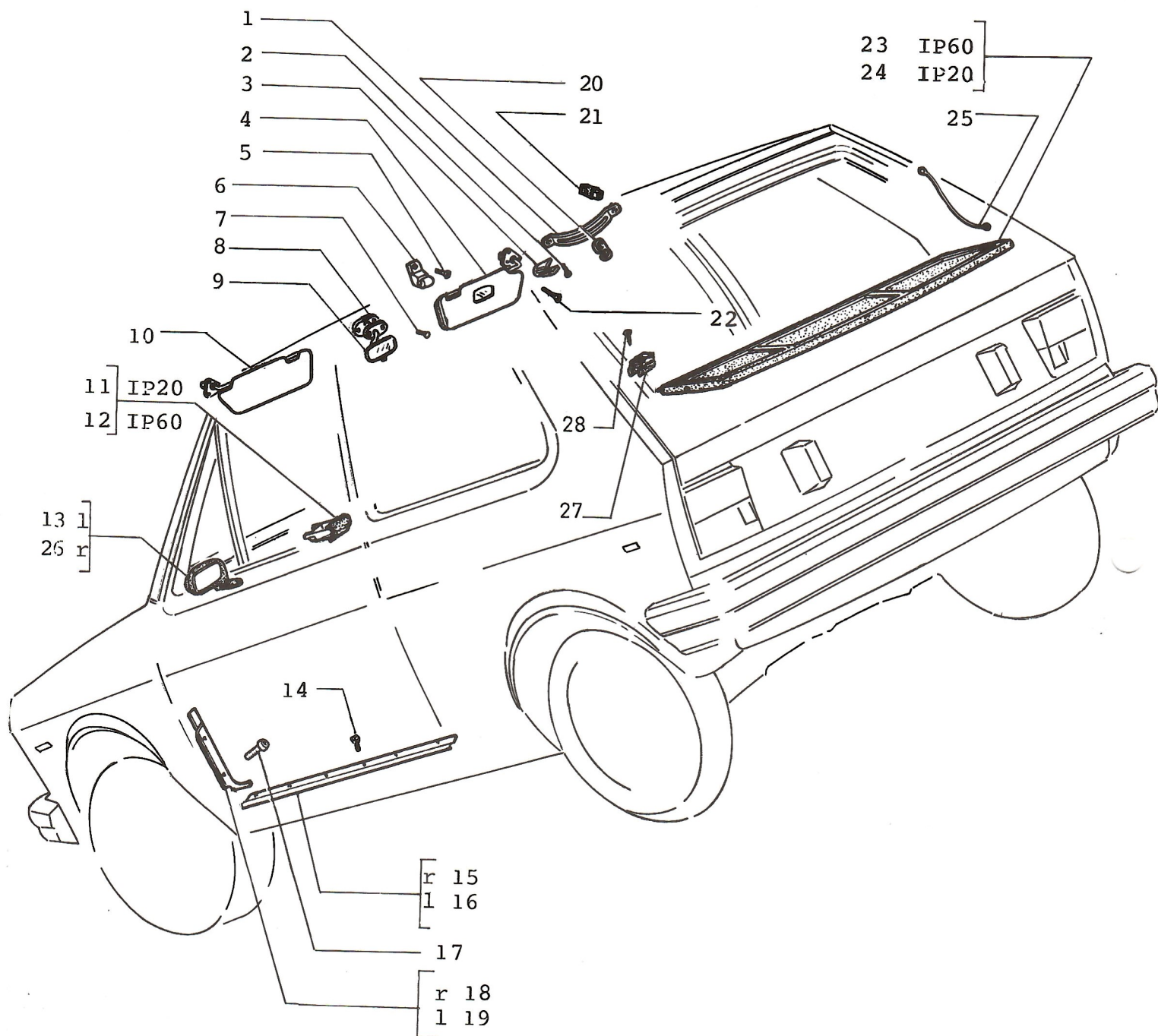
- |    |                    |                         |
|----|--------------------|-------------------------|
| 1. | 46621060           | CARPET - IP60           |
|    | 46622489           | CARPET - IP60           |
|    | 46625419 (22)      | CARPET - IP60           |
|    | 46626574 (47, 11)  | CARPET - IP60           |
|    | 46631255 (58)      | CARPET - IP60           |
|    | 46633556 (58)      | CARPET - IP60           |
|    | 46626674 (48)      | CARPET - IP60           |
|    | 46634161 (50)      | CARPET - IP60           |
| 2. | 46621061           | CARPET - IP20           |
|    | 46622490           | CARPET - IP20           |
| 3. | 46620144           | CARPET - (STORAGE) IP60 |
|    | 46622431           | CARPET - (STORAGE) IP60 |
|    | 46622810           | CARPET - (STORAGE) IP60 |
| 4. | 46620145           | CARPET - (STORAGE) IP20 |
|    | 46622430           | CARPET - (STORAGE) IP20 |
|    | 46622809           | CARPET - (STORAGE) IP20 |
| 5. | 1615415            | BUTTON                  |
| 6. | 15690707(22,47,11) | SCREW (M 6 x 16)        |
| 7. | 12612207(22,47,11) | WASHER                  |
| 8. | 46631270 (48)      | CARPET - (STORAGE) IP60 |



# INTERIOR TRIM AND MIRRORS

81.07

1.	1618887	RETAINER
2.	1618888	RETAINER
3.	1618886	RETAINER
4.	14184376	CLIP
5.	46620282	LINING
6.	46620124	RECEIVER - ASH IP20 (REAR)
7.	46620125	RECEIVER - ASH IP60 (REAR)
8.	46621332	CLIP - REAR CARGO PANEL
9.	46621333	CLIP - REAR CARGO PANEL
	46628629 (58)	CLIP
10.	14102985	CLIP
11.	10519307	WASHER
12.	15645907	SCREW
13.	15660507	SCREW
	15908407	SCREW
14.	12612207	WASHER
15.	46620191	PANEL - SPEAKER R/H IP20
16.	46620193	PANEL - SPEAKER L/H IP20
17.	46620192	PANEL - SPEAKER R/H IP60
	46629631 (58)	PANEL - SPEAKER R/H IP60
18.	46620194	PANEL - SPEAKER L/H IP60
	46629632 (58)	PANEL - SPEAKER L/H IP60
19.	46620160	PANEL R/H IP20
	46621872	PANEL R/H IP20
20.	46620161	PANEL L/H IP20
	46621873	PANEL L/H IP20
21.	46620158	PANEL R/H IP60
	46621874	PANEL R/H IP60
	46625431 (22,47,11)	PANEL R/H IP60
	46631179 (58)	PANEL R/H IP60
22.	46620159	PANEL L/H IP60
	46621875	PANEL L/H IP60
	46625432 (22,47,11)	PANEL L/H IP60
	46631180 (58)	PANEL L/H IP60
23.	1619631	PILLAR R/H REAR IP60
	46621602	PILLAR R/H REAR IP60
	46629591 (58)	PILLAR R/H REAR IP60
24.	1619632	PILLAR L/H REAR IP60
	46621603	PILLAR L/H REAR IP60
	46629592 (58)	PILLAR L/H REAR IP60
25.	46620513	PILLAR R/H IP20
	46621604	PILLAR R/H IP20
26.	46620514	PILLAR L/H IP20
	46621605	PILLAR L/H IP20
27.	4440658	PANEL R/H CARGO
28.	46620265	PANEL L/H CARGO
29.	15644007	SCREW - FRONT LICENSE PLATE
30.	4156262	TRAY
31.	4121201	STRAP - TOOL KIT
	4116766	STRAP - TOOL KIT
	46627101 (58)	STRAP - TOOL KIT
32.	46620284	PANEL
	46628113 (58)	PANEL
33.	46620283	PANEL
	46628110 (58)	PANEL
34.	1618827	SLEEVE
35.	1618826	CASING
36.	46630580 (58)	CLIP
37.	46628767 (58)	CLIP
	91704767 (58)	CLIP
38.	46629602 (58)	PANEL R/H CARGO
39.	46629603 (58)	PANEL L/H CARGO
40.	46628252 (58)	LINING

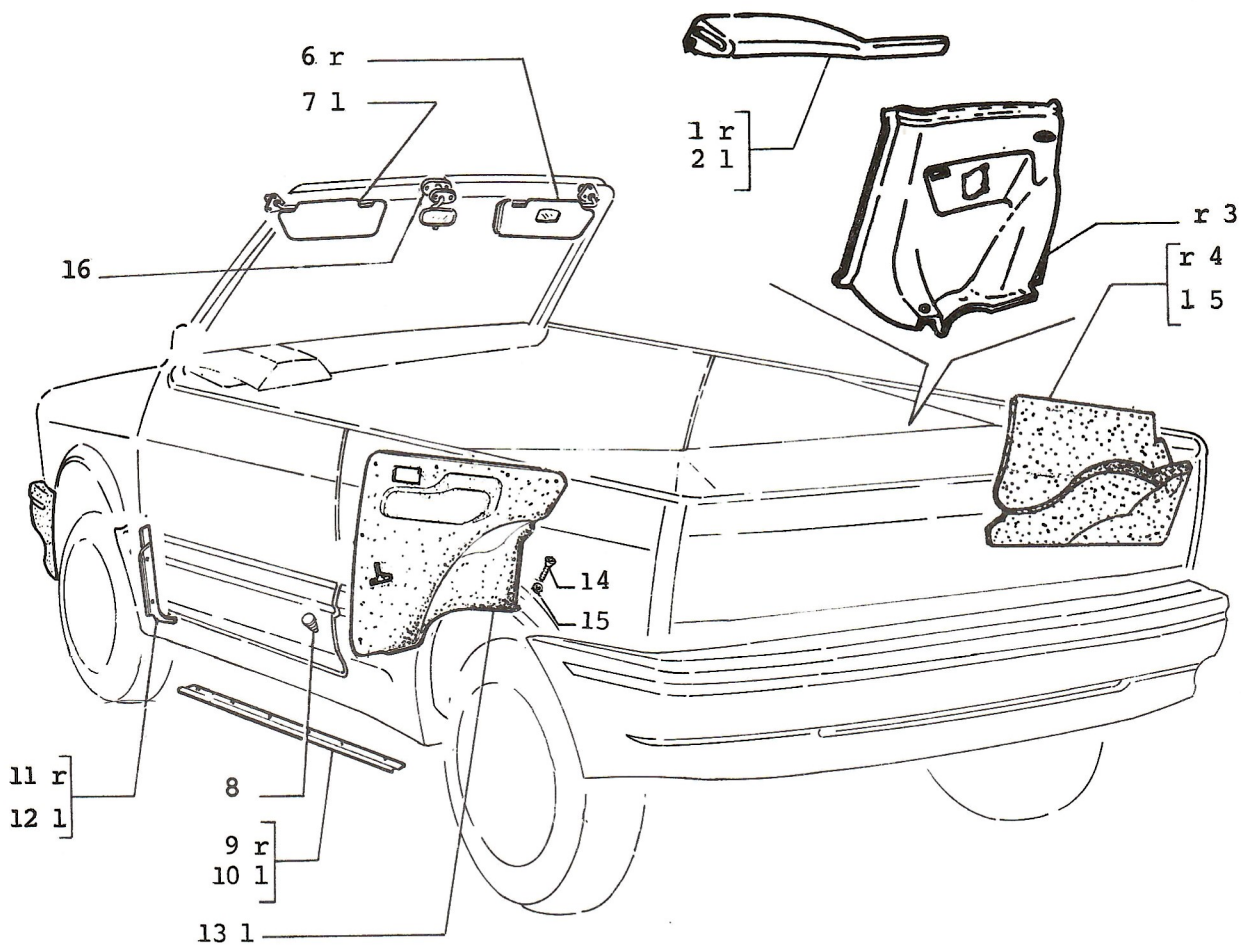


# INTERIOR TRIM AND MIRROR

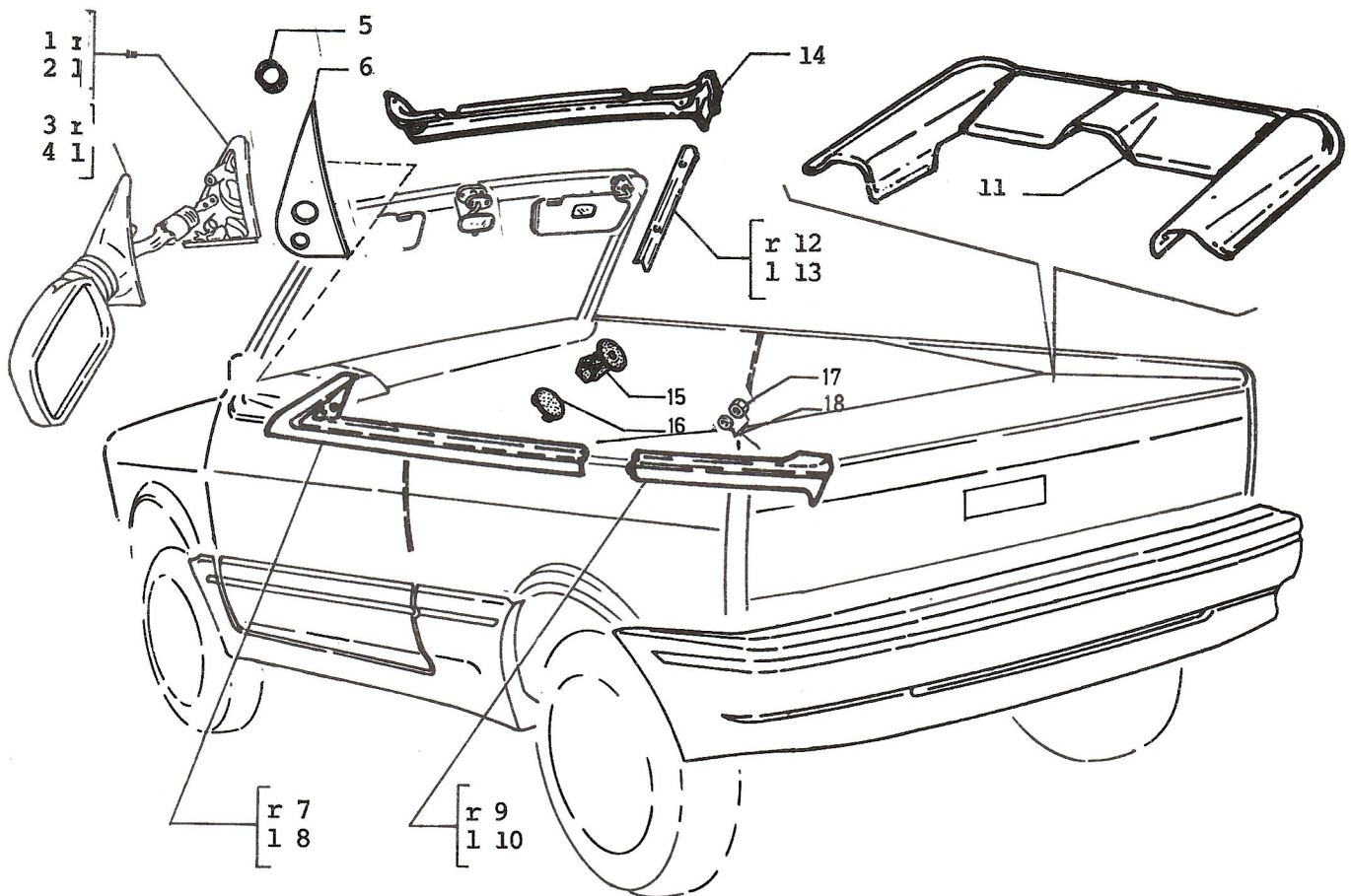
81.07/1

1.	4321849	HANDLE - GRAB
	46621769	HANDLE - GRAB
	46628089 (58)	HANDLE - GRAB
2.	17674001	SCREW
	17674007	SCREW
3.	4186493	BOT - ASSIST HANDLE
4.	1619885	VISOR R/H
	46628331 (58)	VISOR R/H
5.	15664707	SCREW
6.	1619883	BRACKET
7.	13299507	SCREW R/H MIRROR INNER
8.	1619884	SUPPORT - MIRROR
9.	1452583	MIRROR - INNER REAR VIEW
10.	1619886	VISOR L/H
	46628334 (58)	VISOR L/H
11.	1619790	TRAY - ASH IP20
12.	1619791	TRAY - ASH IP60
13.	46620285	MIRROR - L/H OUTER
14.	15641207	SCREW
	15908407	SCREW
15.	46620181	MOULDING - DOORSILL R/H
	46624158	MOULDING - DOORSILL R/H (*1)
	46628093 (58)	MOULDING - DOORSILL R/H
16.	46620728	MOULDING - DOORSILL L/H
	46624159	MOULDING - DOORSILL L/H (*1)
	46628094 (58)	MOULDING - DOORSILL L/H
17.	15663207	SCREW - CARPET TRIM
18.	4427334	MOULDING - CARPET R/H
	46628099 (58)	MOULDING - CARPET R/H
19.	4427335	MOULDING - CARPET L/H
	46628100 (58)	MOULDING - CARPET L/H
20.	4479339	HANGER
	46628337 (58)	HANGER
21.	14203080	CLIP
	46625155	CLIP
22.	15691407	SCREW
23.	46620162	PANEL - STORAGE
	46631137 (58)	PANEL - STORAGE
24.	46620163	PANEL - STORAGE
25.	4428825	STRAP - REAR CARGO TRAY
26.	46620286	MIRROR R/H OUTER
27.	4428826	CLIP
28.	15902701	SCREW (M 6 x 19)

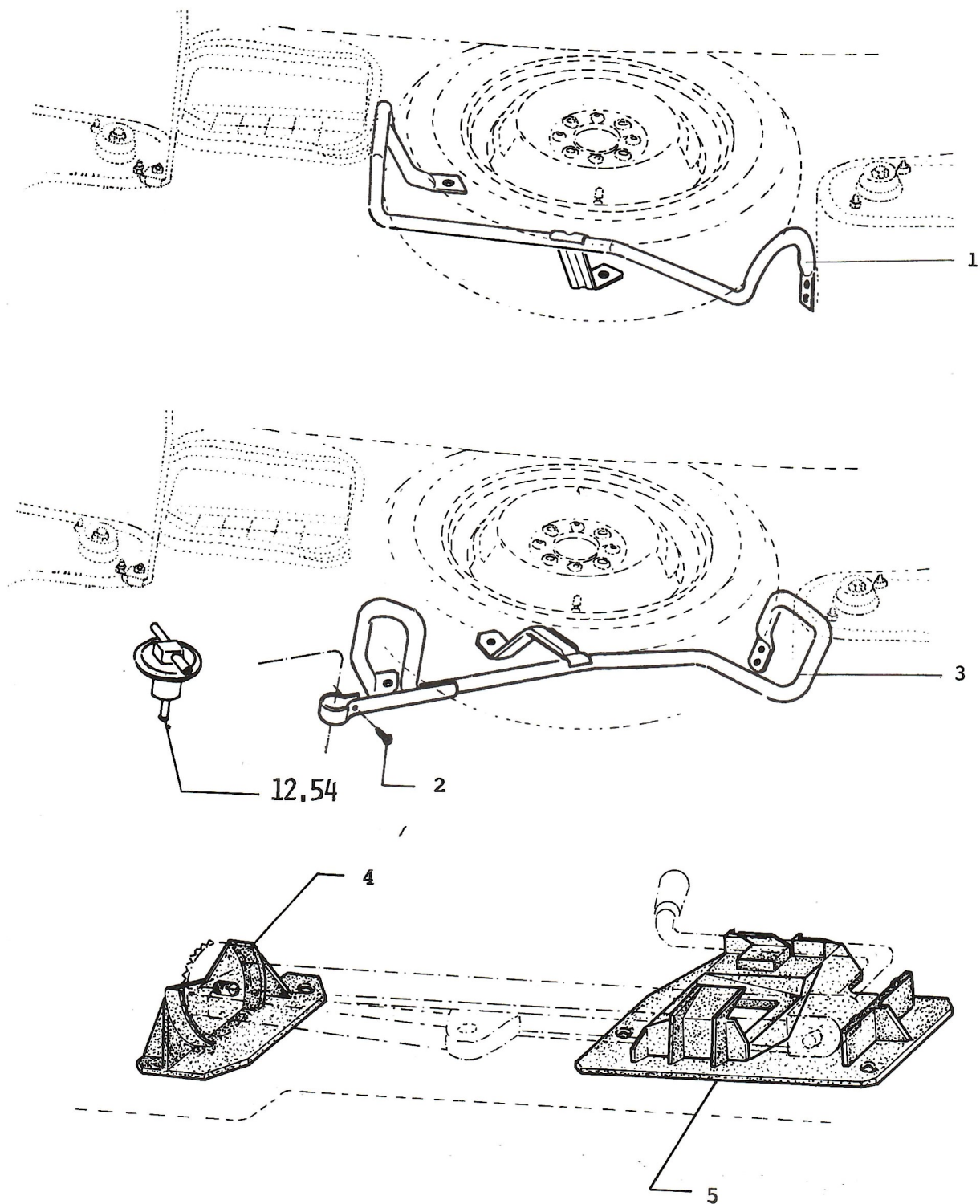
NOTE 1: 2 ND TYPE USED FROM CAR No 18317 VIN 457247



1.	46629534 (48)	QTR TRIM CAP R/H
2.	46629535 (48)	QTR TRIM CAP L/H
3.	46626652 (48)	QTR TRIM PANEL R/H
4.	46630977 (48)	PANEL R/H CARGO
5.	46630978 (48)	PANEL L/H CARGO
6.	46626680 (48)	VISOR R/H
7.	46626681 (48)	VISOR L/H
8.	46628629 (48)	CLIP
9.	46628006 (48)	MOULDING - DOORSILL R/H
10.	46628007 (48)	MOULDING - DOORSILL L/H
11.	46629932 (48)	MOULDING - CARPET R/H
12.	46629933 (48)	MOULDING - CARPET L/H
13.	46626653 (48)	QTR TRIM PANEL L/H
14.	15690707	SCREW 6 x 16
15.	12612207	WASHER 3,6
16.	46632477 (48)	SUPPORT - MIRROR INNER



- |     |               |                                 |
|-----|---------------|---------------------------------|
| 1.  | 46630625 (48) | MIRROR - INNER GARNISH R/H      |
| 2.  | 46630626 (48) | MIRROR - INNER GARNICH L/H      |
| 3.  | 46630085 (48) | MIRROR - R/H OUTER              |
| 4.  | 46630084 (48) | MIRROR - L/H OUTER              |
| 5.  | 46623218 (48) | WASHER                          |
| 6.  | 46630925 (48) | MIRROR GARNISH - INR            |
| 7.  | 46630438 (48) | DOOR MOLDING OUTER ASSY R/H     |
| 8.  | 46630439 (48) | DOOR MOLDING OUTER ASSY L/H     |
| 9.  | 46630444 (48) | REAR QTR MOLDING - OTR R/H      |
| 10. | 46630445 (48) | REAR QTR MOLDING - OTR L/H      |
| 11. | 46629542 (48) | TONNEAU COVER                   |
| 12. | 46626648 (48) | A - PILLAR GARNISH-INR R/H IP60 |
| 13. | 46626649 (48) | A - PILLAR GARNISH-INR L/H IP60 |
| 14. | 46626650 (48) | WINDSHIELD GARNISH-INR IP60     |
| 15. | 46634214 (48) | CLIP                            |
| 16. | 46634213 (48) | CLIP                            |
| 17. | 15896411 (48) | NUT                             |
| 18. | 11195479 (48) | WASHER                          |

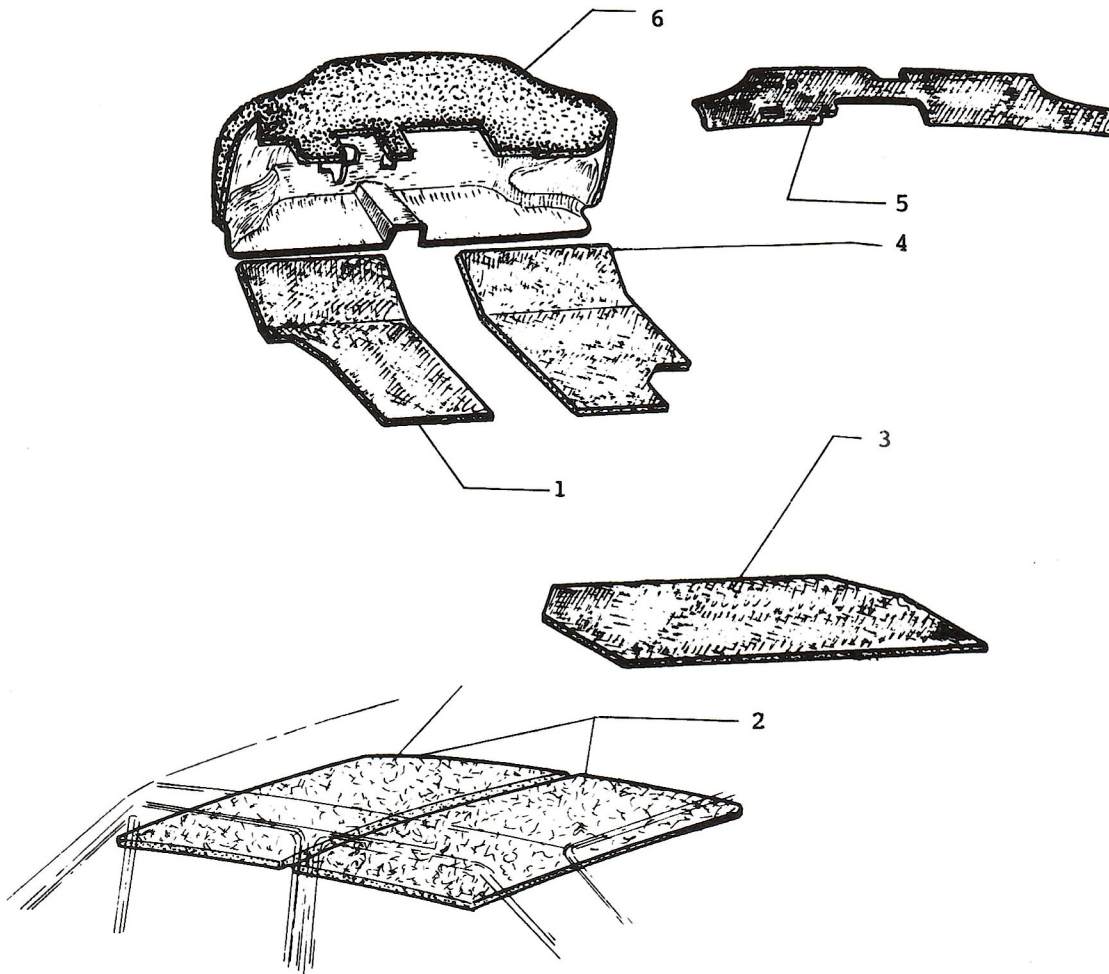


**SPARE WHEEL AND TIRE JACK MOUNTING COMPONENTS**

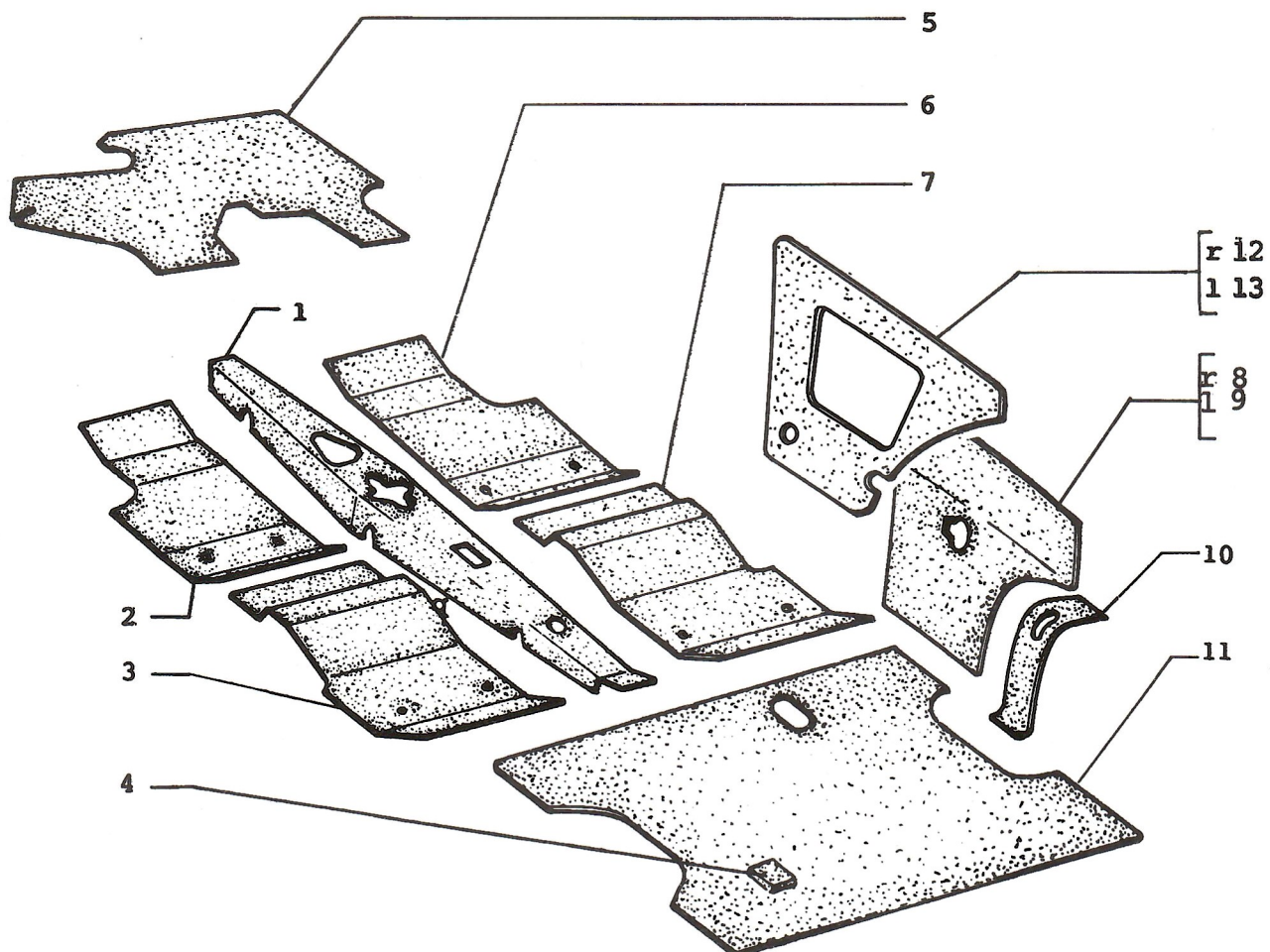
**81.08**

- |    |                  |                                |
|----|------------------|--------------------------------|
| 1. | 46620615         | SUPPORT - SPARE TIRE           |
|    | 46626382 (58)    | SUPPORT - SPARE TIRE           |
|    | 46635461 (50,58) | SUPPORT - SPARE TIRE           |
| 2. | 15687277         | SCREW                          |
| 3. | 46622743 (98)    | SUPPORT - SPARE TIRE           |
|    | 46623084 (27)    | SUPPORT - SPARE TIRE           |
| 4. | 4426796          | MOUNT - JACK/SPARE WHEEL (*1)  |
| 5. | 4426797          | HOLDER - JACK/SPARE WHEEL (*1) |

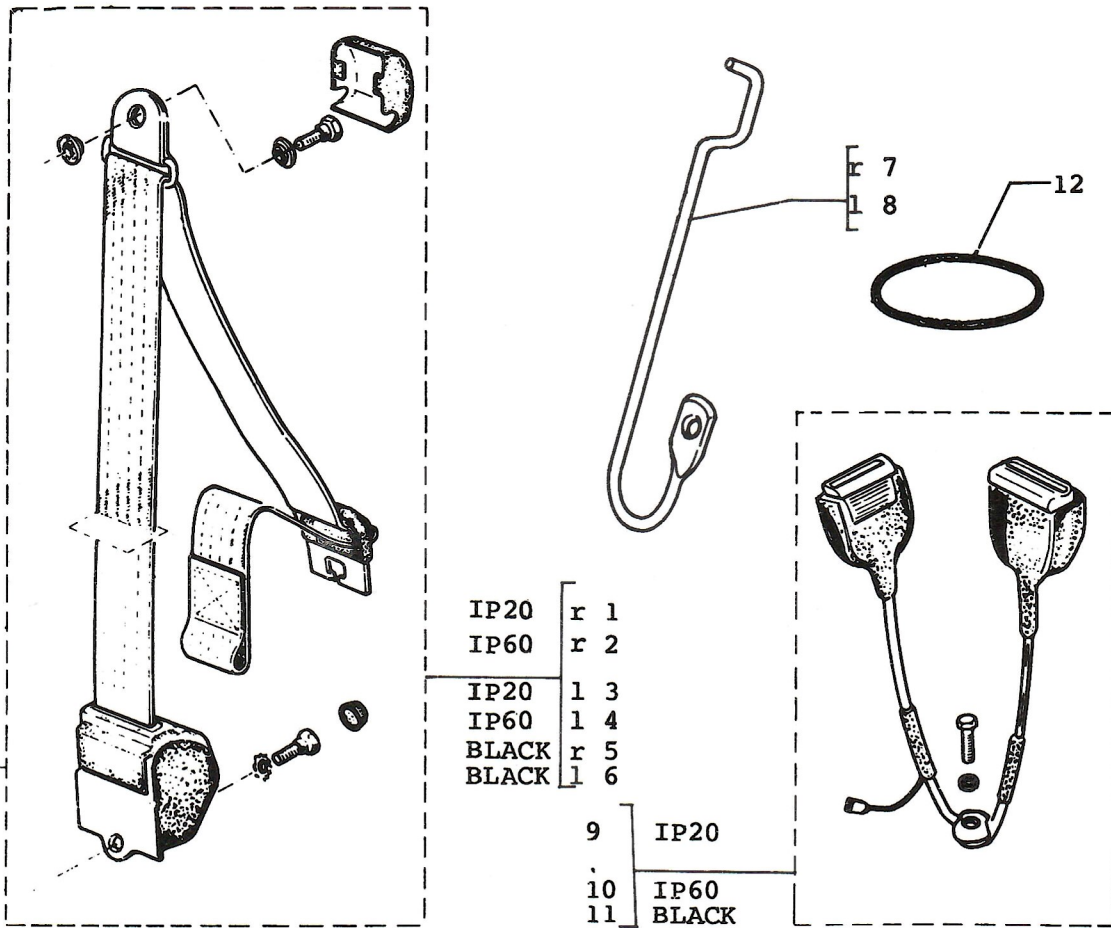
NOTE 1: CANCELLED ITEM FOR MODEL (58)



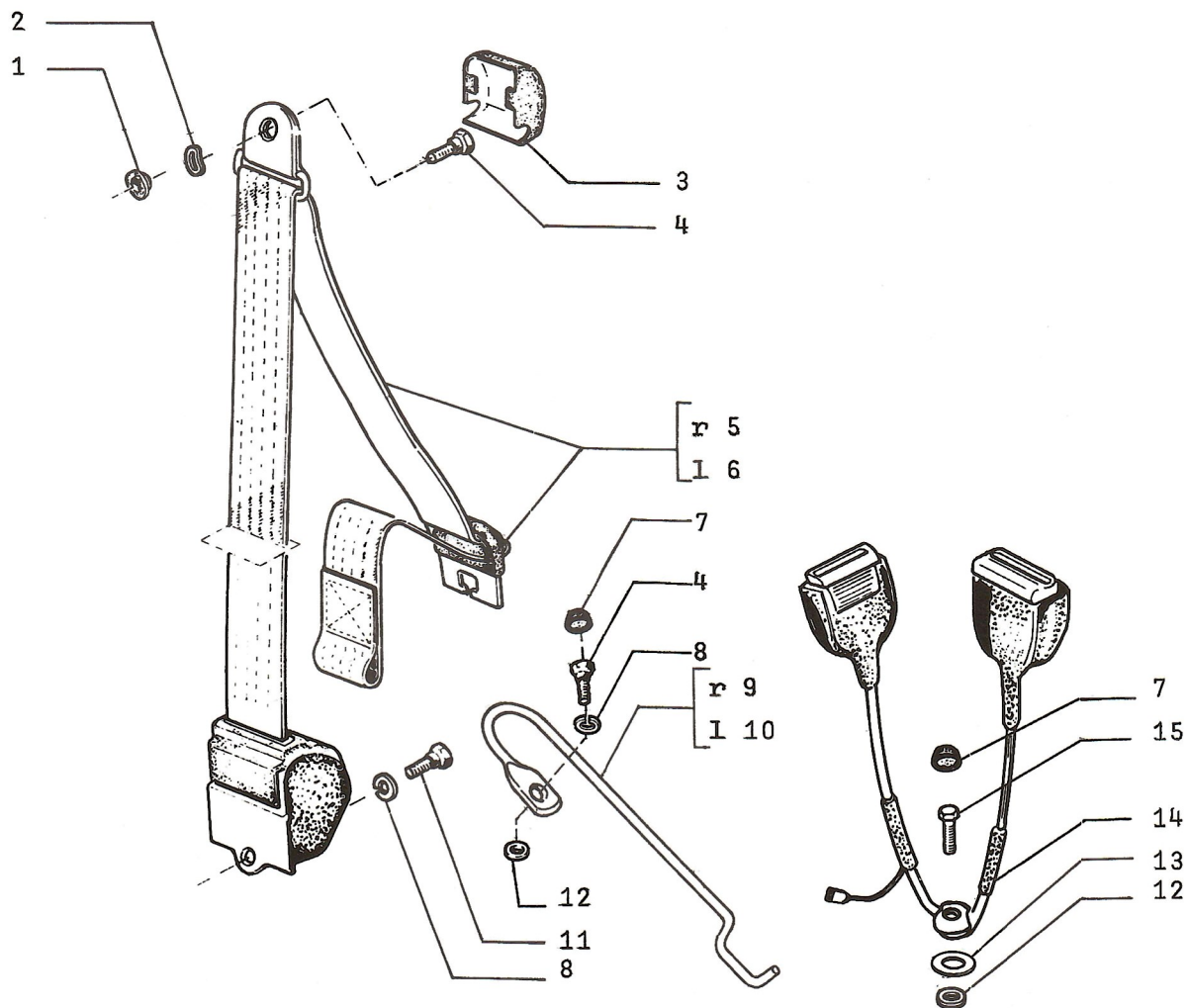
- |    |                       |            |
|----|-----------------------|------------|
| 1. | 4429291               | INSULATION |
| 2. | 4418972               | INSULATION |
| 3. | 4441860               | INSULATION |
| 4. | 4429292               | INSULATION |
| 5. | 4441857               | INSULATION |
| 6. | 46622585              | INSULATION |
|    | 46625523 (22, 47, 11) | INSULATION |
|    | 46631286 (58)         | INSULATION |
|    | 46630136 (48)         | INSULATION |
|    | 46632795 (50)         | INSULATION |



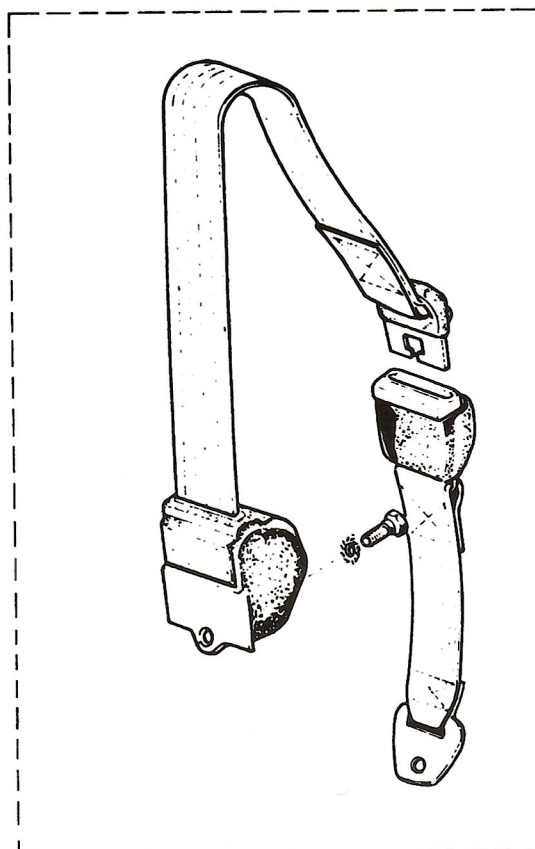
1.	4429315	INSULATION
	46625044 (22, 47, 11)	INSULATION
	46634160 (50)	INSULATION
2.	4437995	INSULATION
3.	4437998	INSULATION
4.	4353105	INSULATION
5.	4460196	INSULATION
6.	4437994	INSULATION
7.	4437997	INSULATION
8.	4468858	INSULATION R/H
9.	4468859	INSULATION L/H
10.	4294261	INSULATION
	46621623	INSULATION
11.	4429289	INSULATION
	46631525 (48)	INSULATION
12.	46632615 (48)	INSULATION R/H
- 13.	46632616 (48)	INSULATION L/H



- |     |          |                               |
|-----|----------|-------------------------------|
| 1.  | 46600836 | BELT - SEAT FRONT R/H IP20    |
| 2.  | 46600835 | BELT - SEAT FRONT R/H IP60    |
| 3.  | 46600846 | BELT - SEAT FRONT L/H IP20    |
| 4.  | 46600845 | BELT - SEAT FRONT L/H IP60    |
| 5.  | 46600310 | BELT - SEAT FRONT R/H (BLACK) |
| 6.  | 46600311 | BELT - SEAT FRONT L/H (BLACK) |
| 7.  | 46600840 | LEVER - BELT SEAT FRONT R/H   |
| 8.  | 46600841 | LEVER - BELT SEAT FRONT L/H   |
| 9.  | 46600838 | CENTER RECEPTACLE IP20        |
| 10. | 46600837 | CENTER RECEPTACLE IP60        |
| 11. | 46600429 | CENTER - RECEPTACLE (BLACK)   |
| 12. | 46622083 | SEAL                          |

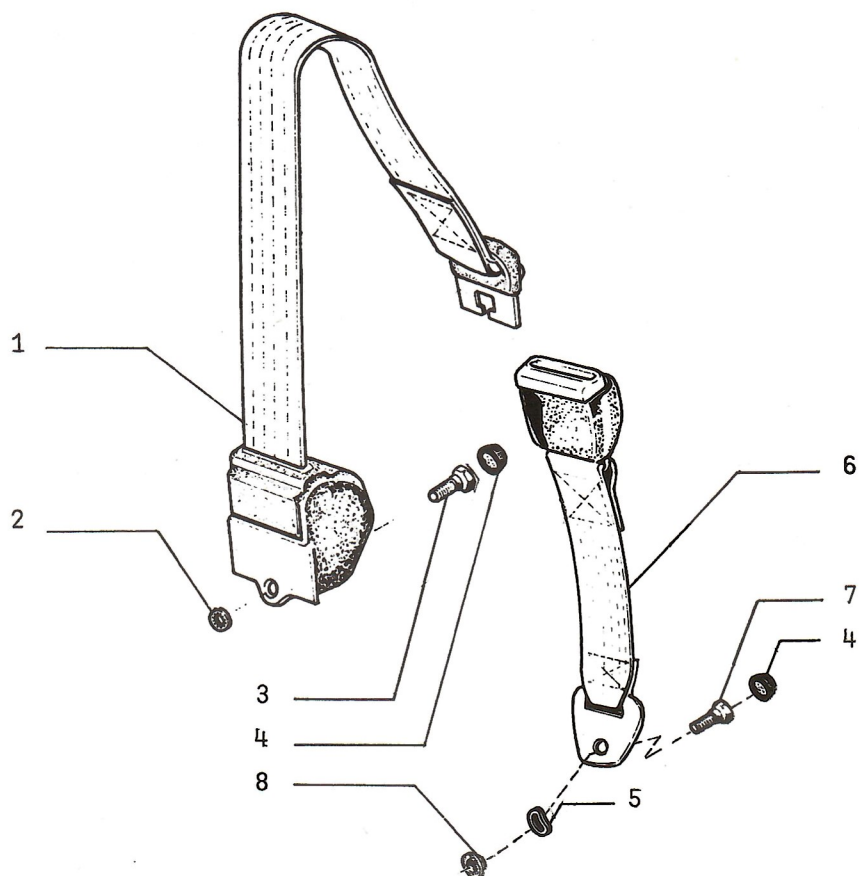


1.	1452959	SPACER
2.	12796471	WASHER Ø 15
3.	1453393	COVER
4.	1023230	SCREW
5.	1453385	BELT-SEAT FRONT R/H 21 - ALMOND
6.	1453386	BELT-SEAT FRONT L/H 21 - ALMOND
7.	12797887	CAP
8.	10571979	WASHER
9.	1617307	LEVER R/H
10.	1617308	LEVER L/H
11.	1022806	SCREW
12.	1452958	WASHER
13.	1452743	WASHER
14.	1453394	CENTER RECEPTACLE
15.	1022177	SCREW

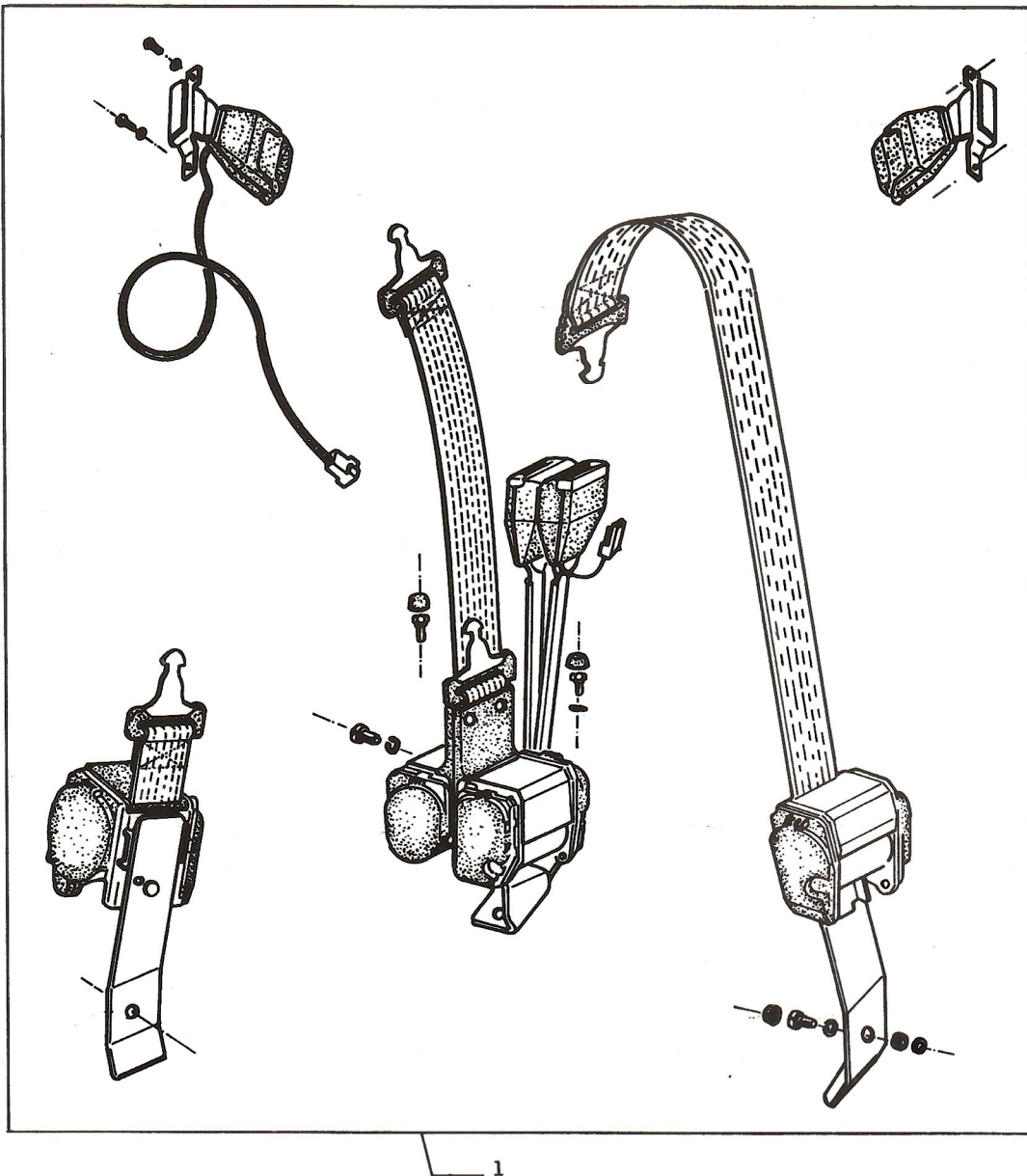


IP20	1
IP60	2
BLACK	3

- |    |               |                        |
|----|---------------|------------------------|
| 1. | 46622784      | BELT - SEAT REAR IP20  |
| 2. | 46622785      | BELT - SEAT REAR IP60  |
|    | 46631429 (58) | BELT - SEAT REAR IP60  |
| 3. | 46620870      | BELT - SEAT REAR/BLACK |



- |    |          |                                 |
|----|----------|---------------------------------|
| 1. | 1453398  | BELT - SEAT REAR/ 21 - ALMOND / |
| 2. | 1452875  | WASHER                          |
| 3. | 1022806  | SCREW                           |
| 4. | 12797887 | CAP                             |
| 5. | 12796471 | WASHER                          |
| 6. | 1453404  | BELT - SEAT REAR/ 21 - ALMOND / |
| 7. | 1023230  | SCREW                           |
| 8. | 1452957  | BUSHING                         |



1.      46625067 (22)      BELT - SEAT IP 60  
          46628016 (47,11)      BELT - SEAT IP 60  
          46630559 (58)      BELT - SEAT IP 60