

ENGINE COMPARTMENT LID AND RELEASE

CABLE ASSEMBLY

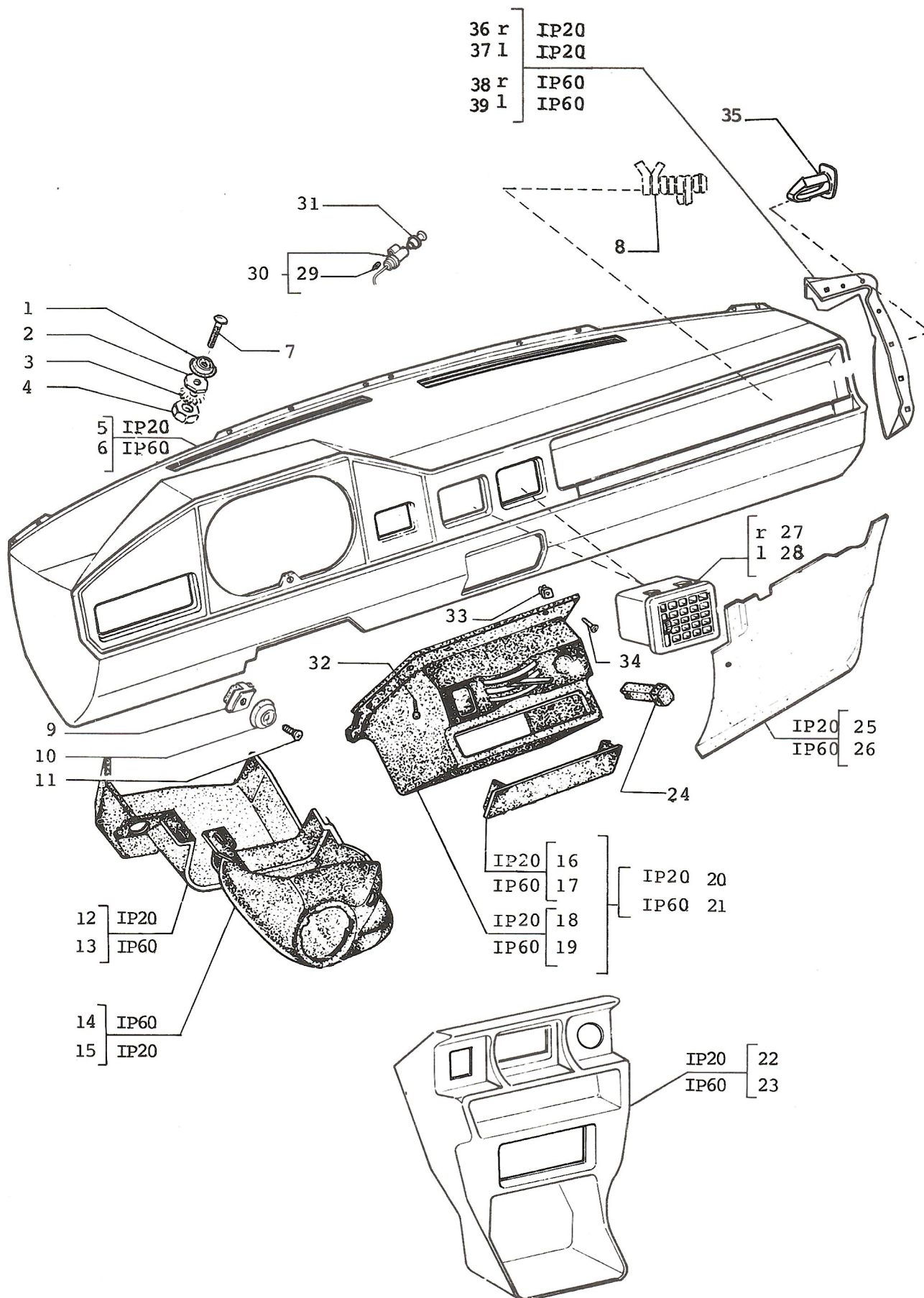
71.01

NOVEMBER 1990.

ENGINE COMPARTMENT LID AND RELEASE CABLE ASSEMBLY

71.01

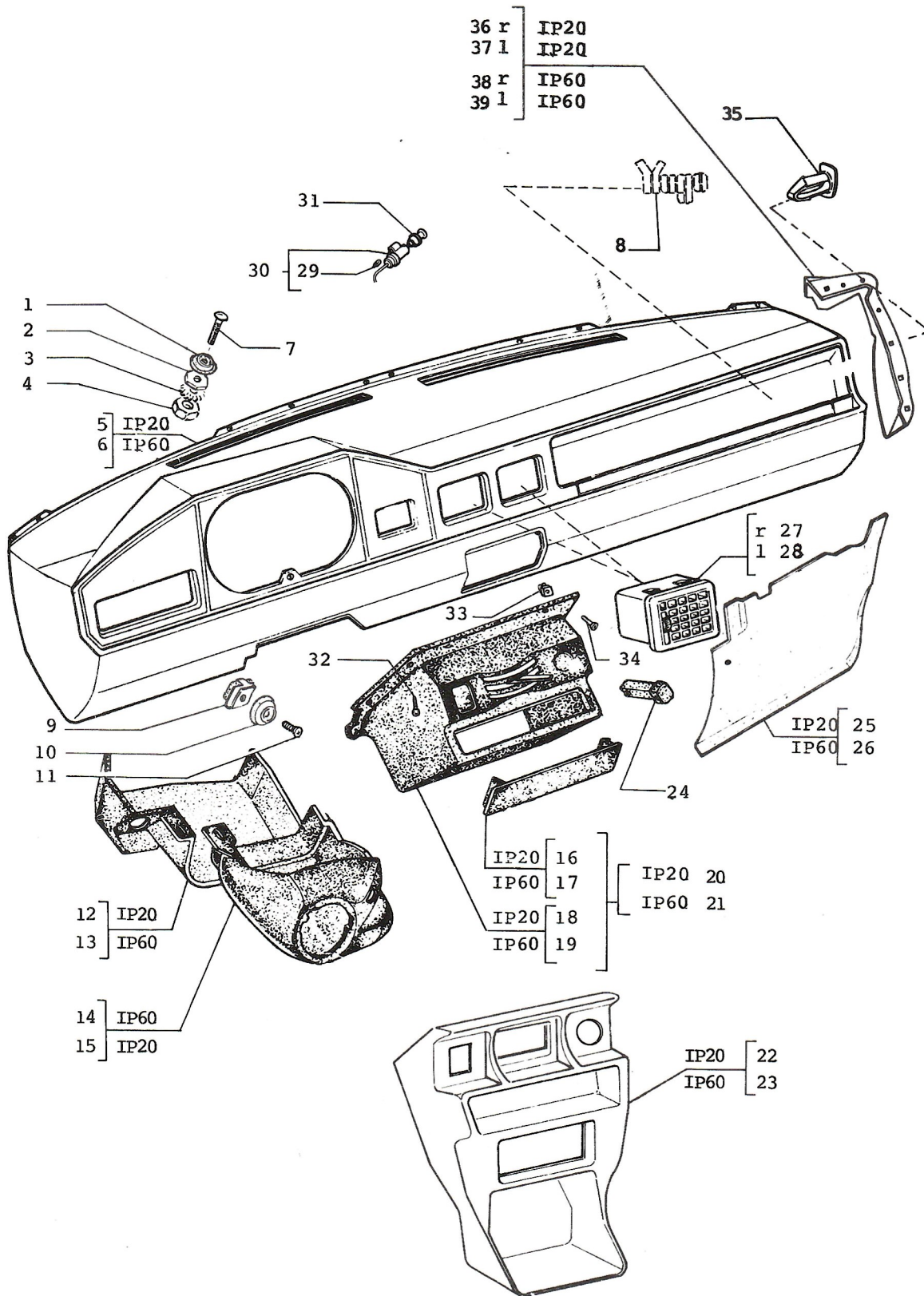
1.	4417668	HINGE - HOOD R/H
2.	4417669	HINGE - HOOD L/H
3.	12646701	WASHER
	12647201	WASHER
4.	12601571	LOCK WASHER
5.	4379275	FIN - HOOD HINGE
6.	13838071	SCREW
7.	4427537	SUPPORT - R/H HOOD HINGE
8.	4427538	SUPPORT - L/H HOOD HINGE
9.	10794011	NUT - FUEL SENDING UNIT
10.	91703221	SCOOP - HOOD
11.	4433739	WASHER
12.	4417667	ROD STAY/HOOD
13.	46617403 (58)	BRACKET
14.	10396180 (58)	GROOVED - BUSH
15.	4427541	SPRING - HOOD STAY ROD
16.	46630810 (58)	ROD STAY/HOOD
17.	4428251	HOOD - ENGINE
	46628906 (58)	HOOD - ENGINE
18.	10402580	BUSHING - HOOD REL/CABLE
19.	4427543	CABLE - HOOD RELEASE
20.	87230	BAND - HOOD RELEASE CABLE
21.	4427544	CABLE - INNER
22.	4276430	PAD - HOOD PANEL
23.	4164335	SPRING - HOOD RELEASE
24.	4171405	SPRING
25.	4363896	LOCK - HOOD
26.	1616152	HANDLE - HOOD LIFT
	4425325	HANDLE - HOOD LIFT
	46621793	HANDLE - HOOD LIFT
27.	12605371	WASHER
28.	12643701	WASHER
29.	10902621	SCREW
30.	13836071	SCREW
31.	4417765	LATCH
32.	4446106	SPRING - HOOD SAFETY LATCH
33.	4445432	PIN
34.	4427542	BRACKET - HOOD SAFETY LATCH
35.	16100811	NUT
36.	12646721	WASHER
	12647201	WASHER
	10519621	WASHER
37.	10615671	WASHER
38.	46634091	WEATHERSTRIP



INSTRUMENT PANEL AND RELEVANT COMPONENTS

71.02

1.	4369036	SHIM/PANEL - DASH
2.	4369037	SHIM/PANEL - DASH
3.	12598271	WASHER
4.	15896211	NUT
5.	1619828	PANEL - DASH IP20
6.	46620733	PANEL - DASH IP60
	46625084 (22)	PANEL - DASH IP60
	46629250 (47, 11)	PANEL - DASH IP60
	46631301 (58)	PANEL - DASH IP60
	46628714 (48)	PANEL - DASH IP60
	46634166 (50)	PANEL - DASH IP60
7.	4433619	SCREW/PANEL - DASH
8.	46620168	EMBLEM - DASH PANEL
9.	14219290	CLIP
10.	4387464	SHIM/PANEL - DASH
11.	15645707	SCREW
12.	1619834	COVER - STEERING COLUMN IP20
13.	1619835	COVER - STEERING COLUMN IP60
14.	1619804	COVER - STEERING COLUMN IP60
	46633781 (50)	COVER - STEERING COLUMN IP60
15.	1619805	COVER - STEERING COLUMN IP20
16.	1619800	FACEPLATE - CONSOLE IP20
17.	1619801	FACEPLATE - CONSOLE IP60
18.	1619818	PANEL - IP20
	46622632 (98)	PANEL - IP20
19.	1619819	PANEL - IP60
	46622633 (98)	PANEL - IP60
20.	1619820	CONSOLE IP20
	46622630 (98)	CONSOLE IP20
21.	1619821	CONSOLE IP60
	46622631 (98)	CONSOLE IP60
22.	1619822	CONSOLE - RADIO/UTILITY IP 20 (*1)
	91703760	CONSOLE - RADIO/UTILITY IP 20 (*2)
23.	1619823	CONSOLE - RADIO/UTILITY IP 60 (*1)
	91703759	CONSOLE - RADIO/UTILITY IP 60 (*2)
	46625106(22, 11, 58)	CONSOLE - RADIO/UTILITY IP 60
	46635560 (50)	CONSOLE - RADIO UTILITY IP 60
	46624461 (31)	CONSOLE - RADIO/UTILITY IP 60
24.	4375263	KNOB - HEATER CONTROL LEVER
25.	46621447	PANEL UNDER DASHBOARD IP20
26.	46621448	PANEL UNDER DASHBOARD IP60
	46631436 (58, 50)	PANEL UNDER DASHBOARD IP60
27.	4455049	VENT R/H
28.	4455050	VENT L/H
29.	14142390	BULB
	14143790 (27)	BULB



INSTRUMENT PANEL AND RELEVANT COMPONENTS

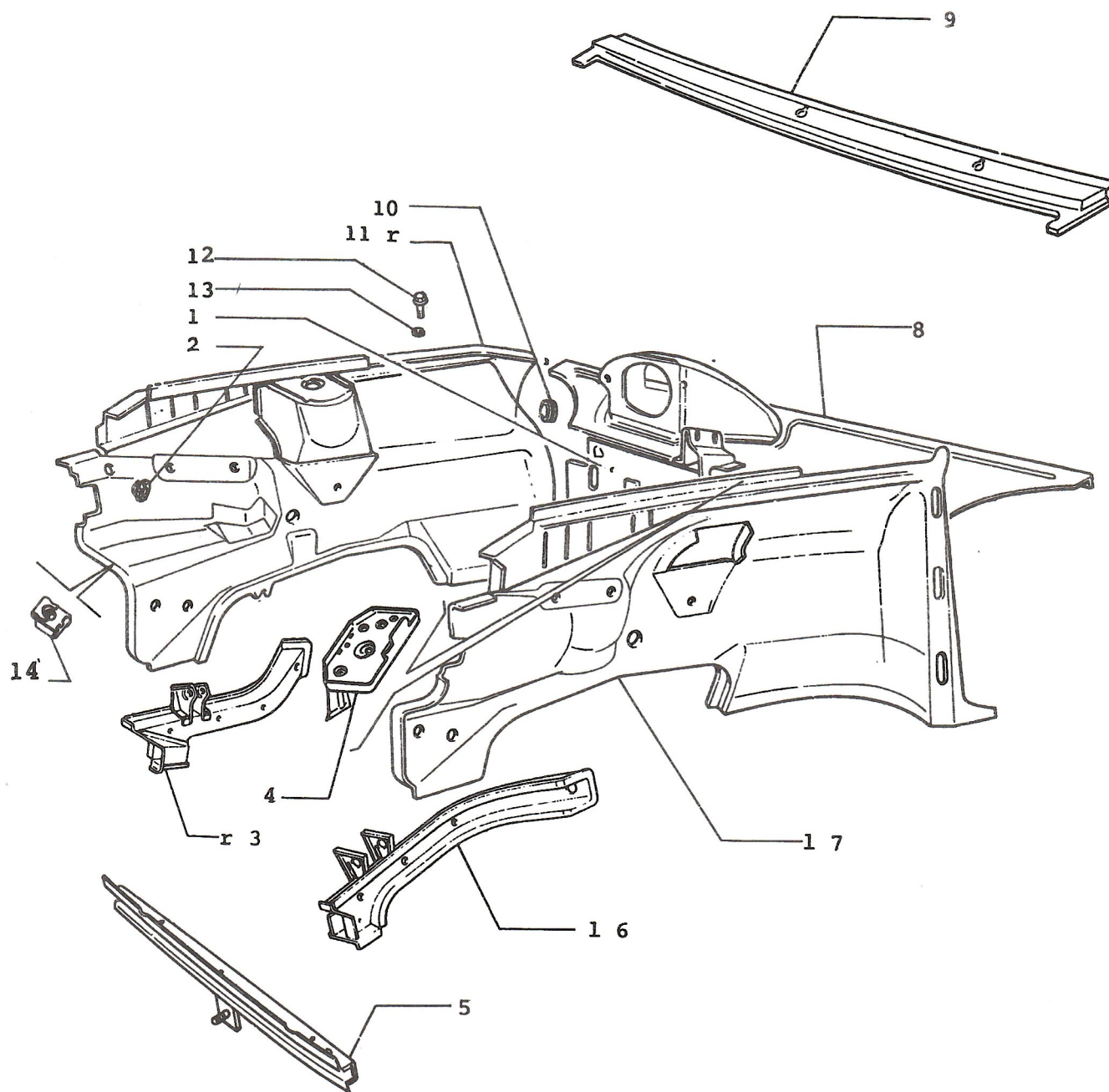
71.02

30.	4296864	HOUSING-CIG/LIGHTER	
	46621394 (27)	HOUSING-CIG/LIGHTER	
	46622831 (27)	HOUSING-CIG/LIGHTER	(ISKRA) (*3)
	46624655 (31)	HOUSING-CIG/LIGHTER	
	46634419 (58,50)	HOUSING-CIG/LIGHTER	
31.	4296865	ELEMENT-CIG/LIGHTER	
	46621395 (27)	ELEMENT-CIG/LIGHTER	(ISKRA) (*3)
	46622832 (27)	ELEMENT-CIG/LIGHTER	
	46624656 (31)	ELEMENT-CIG/LIGHTER	
	46634420 (58,50)	ELEMENT-CIG/LIGHTER	
32.	15904707	SCREW	
33.	14203780	CLIP	
34.	15904507	SCREW	
35.	4452106	CLIP	
36.	46621950	SPACER R/H IP20	
37.	46621951	SPACER L/H IP20	
38.	46621914	SPACER R/H IP60	
39.	46621915	SPACER L/H IP60	

NOTE 1: 1 ST TYPE USED UP TO CAR No 10244 VIN 367700

NOTE 2: 2 ND TYPE USED FROM CAR No 10245 VIN 367701

NOTE 3: 2 ND TYPE USED FROM CAR No 55479 VIN 412421



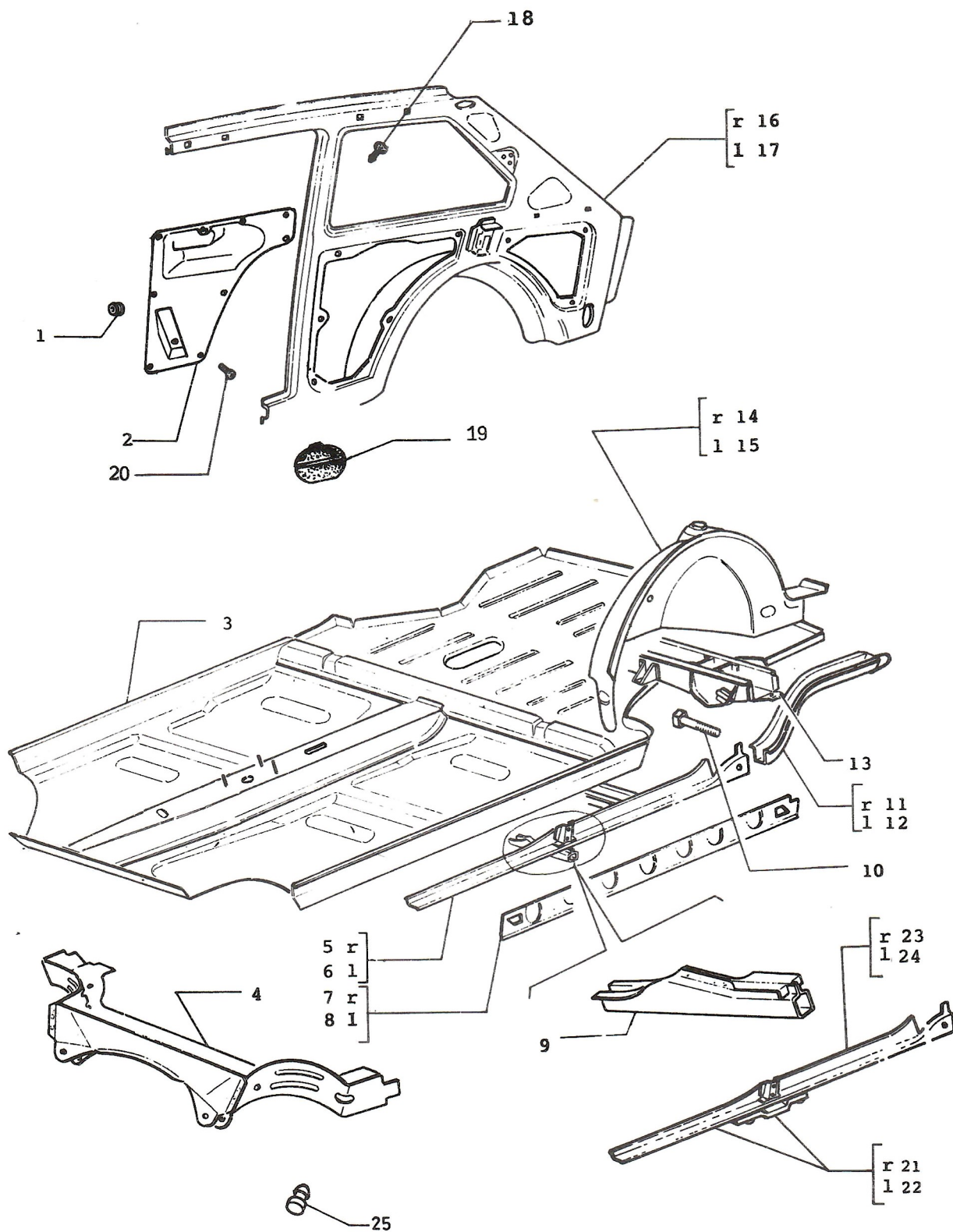
INNER BODY ELEMENTS - FRAME COMPONENTS

71.04

1.	4445715	STONEGUARD
	46622564 (27,48)	STONEGUARD
	46630939 (58)	STONEGUARD
	46634084 (50)	STONEGUARD
2.	4301906	SEAL
3.	4445716	REINFORCEMENT-R/H INNER FENDER
	46622020	REINFORCEMENT-R/H INNER FENDER
	46631593 (50)	REINFORCEMENT-R/H INNER FENDER
4.	46620101	SUPPORT BATTERY
	46630189 (58)	SUPPORT BATTERY
	46634076 (50)	SUPPORT BATTERY
5.	46620972	CROSSRAIL (*1)
	46621753	CROSSRAIL (*2)
6.	46621073	REINFORCEMENT - L/H INNER FENDER
	46622021	REINFORCEMENT - L/H INNER FENDER
	46631594 (50)	REINFORCEMENT-L/H INNER FENDER
7.	46620895	WHEELBOX L/H
	46623322 (31)	WHEELBOX L/H
	46631317 (58)	WHEELBOX L/H
	46627768 (48)	WHEELBOX L/H
	46634081 (50)	WHEELBOX L/H
8.	46620775	PANEL - DASH
	46625600(22,47,11)	PANEL - DASH
	46631289 (58)	PANEL - DASH
	46631629 (48)	PANEL - DASH
	46634083 (50)	PANEL - DASH
9.	4427791	SUPPORT - FIREWALL
10.	46621733	GROOVED BUSH
11.	46620894	WHEELBOX R/H
	46623321 (31)	WHEELBOX R/H
	46631316 (58,50)	WHEELBOX R/H
	46627767 (48)	WHEELBOX R/H
12.	13836471	SCREW
13.	12643701	WASHER
14.	4327420	NUT

NOTE 1: 1 ST TYPE USED UP TO CAR No 31060

NOTE 2: 2 ND TYPE USED FROM CAR No 31061

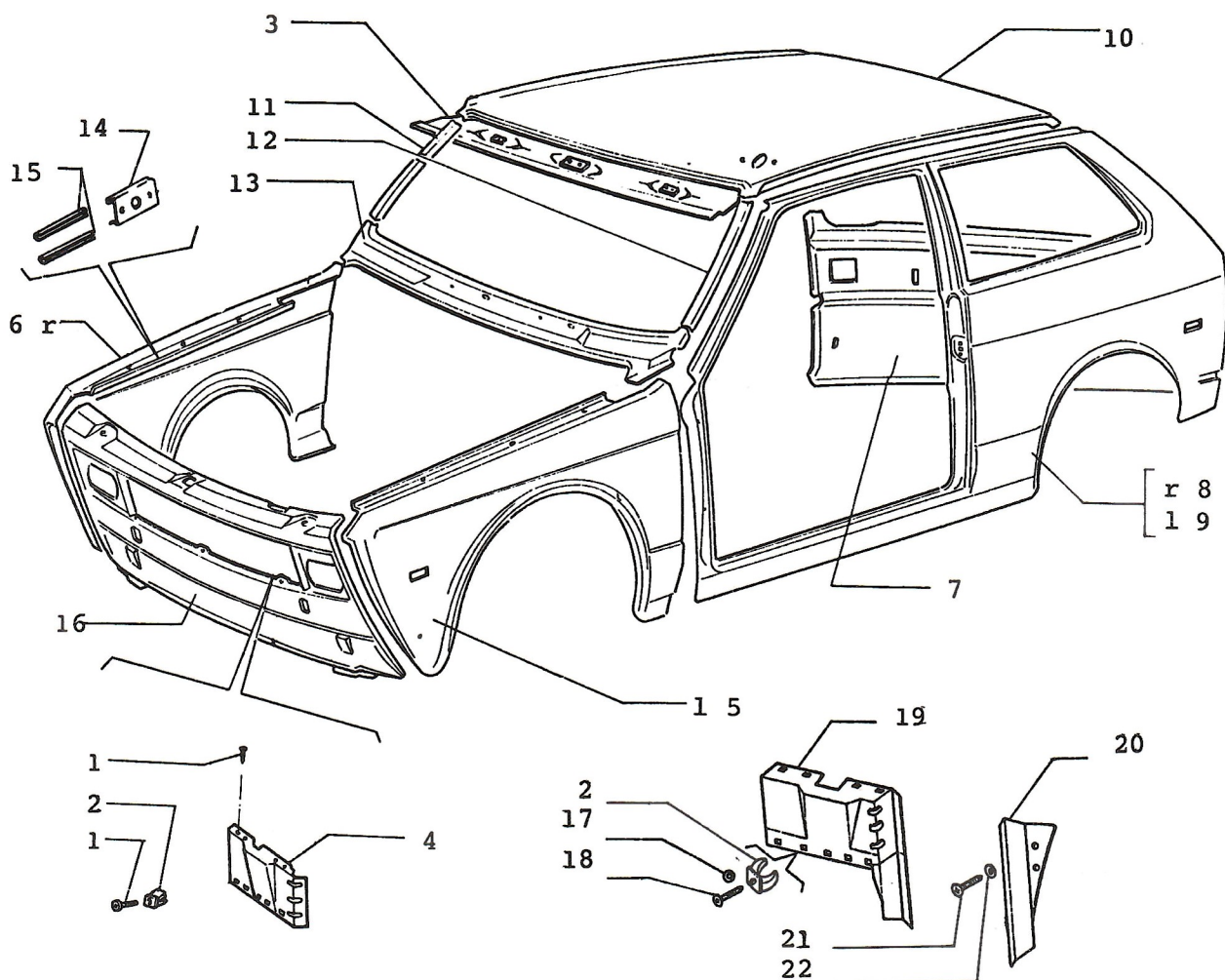


INNER BODY ELEMENTS - FRAME COMPONENTS

71.04/1

1.	4430241	RING
2.	46620417	PROTECTION
	46625058(22,47,11)	PROTECTION
3.	46620521	PAN - FLOOR
	46625315 (22)	PAN - FLOOR
	46626620 (47,11)	PAN - FLOOR
	46631310 (58)	PAN - FLOOR
	46633250 (58)	PAN - FLOOR (*1)
	46631718 (48)	PAN - FLOOR
	46634089 (50)	PAN - FLOOR
4.	4438550	REINFORCEMENT - FLOOR PAN
	46633251 (58)	REINFORCEMENT - FLOOR PAN (*1)
	46626262 (48)	REINFORCEMENT - FLOOR PAN
	46634125 (50)	REINFORCEMENT - FLOOR PAN
5.	4426629	RAIL R/H
6.	4426630	RAIL L/H
7.	4426627	REINFORCEMENT - ROCKER PANEL
8.	4426628	REINFORCEMENT - ROCKER PANEL
9.	4425843	SUPPORT JACK
10.	4225256	SCREW
11.	46620498	SUPPORT R/H
	46631307 (58)	SUPPORT R/H
12.	46620500	SUPPORT L/H
	46629738 (48)	SUPPORT L/H
	46631835 (58)	SUPPORT L/H
13.	1618230	SUPPORT - INNER FRAME
14.	46621153	WHEELBOX R/H
	4421244 (58)	WHEELBOX R/H
15.	46621154	WHEELBOX L/H
	46620232 (58)	WHEELBOX L/H
	46631989 (48)	WHEELBOX L/H
16.	46620936	PANEL - INNER/QUARTER R/H
	46629973 (58)	PANEL - INNER/QUARTER R/H
	46626104 (48)	PANEL - INNER/QUARTER R/H
17.	4435065	PANEL - INNER/QUARTER L/H
	46629974 (58)	PANEL - INNER/QUARTER L/H
	46626105 (48)	PANEL - INNER/QUARTER L/H
18.	46625522(22,47,11)	PLUG
19.	46624922	CLIP
20.	15902607	SCREW
	15687207	SCREW
21.	46628484 (58)	RAIL R/H
22.	46628485 (58)	RAIL L/H
23.	46626210 (48)	RAIL R/H
24.	46626211 (48)	RAIL L/H
25.	46619043	CLIP

NOTE 1: 2 ND TYPE USED FROM FOR MODEL (58) (VII 1990.)

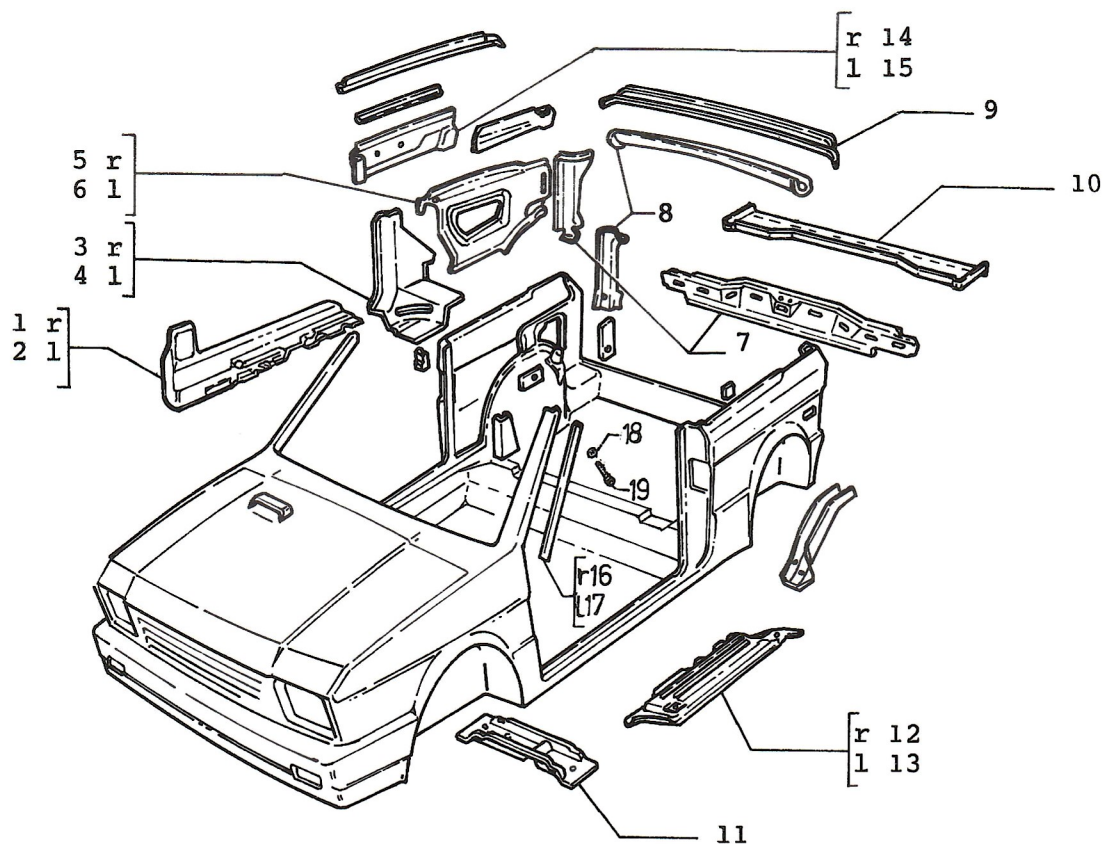


	46620132=46620936 + 1619929 46620133= 4435065 + 1619930	R/H L/H
(47,11,22)	46625384=46620936 + 46625320 46625385= 4435065 + 46625321	R/H L/H
(31)	46623392=46620936 + 46626503 46623393= 4435065 + 46626504	R/H L/H
(58)	46629971=46629973 + 46629969 46629972=46629974 + 46629970	R/H L/H

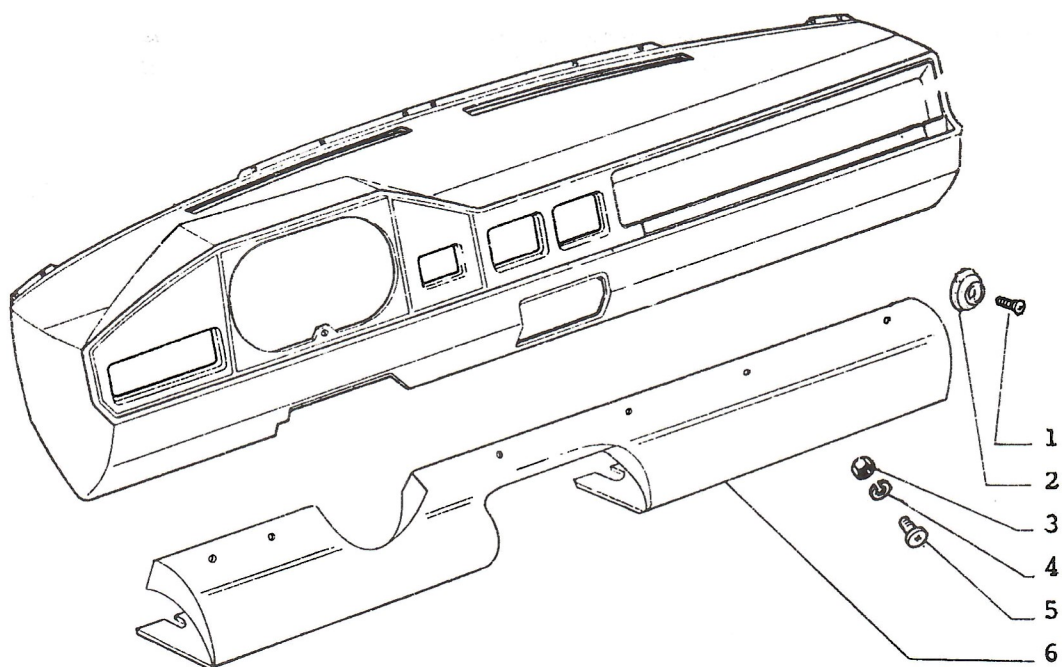
OUTER BODY PANELS

71.05

1.	15644007	SCREW - FRONT LICENSE PLATE
2.	4112977	SCREW
3.	4414553	PANEL - COWL
4.	46620129	PROTECTION FOR ENGINE
	46632530	PROTECTION FOR ENGINE
5.	1619928	FENDER - L/H FRONT
	46623192 (31)	FENDER - L/H FRONT
	46634032 (50)	FENDER - L/H FRONT
6.	1619927	FENDER - R/H FRONT
	46623191 (31)	FENDER - R/H FRONT
7.	1619937 (79,42)	PANEL REAR
	46622303 (27)	PANEL REAR
	46623399 (31)	PANEL REAR
	46626935 (58)	PANEL REAR
8.	1619929	PANEL - R/H REAR QUARTER
	46626503 (31)	PANEL - R/H REAR QUARTER
	46625320(22,47,11)	PANEL - R/H REAR QUARTER
	46629969 (58)	PANEL - R/H REAR QUARTER
9.	1619930	PANEL - L/H REAR QUARTER
	46626504 (31)	PANEL - L/H REAR QUARTER
	46625321(22,47,11)	PANEL - L/H REAR QUARTER
	46629970 (58)	PANEL - L/H REAR QUARTER
10.	46620140	PANEL - ROOF
	46620155	PANEL - ROOF
	46627068 (58)	PANEL - ROOF
11.	4415364	PILLAR - WINDSHIELD R/H
12.	4415365	PILLAR - WINDSHIELD L/H
13.	4424367	PANEL - COWEL
14.	46620295	PLATE - SIDE LAMP
15.	46621221	GASKET - SIDE LAMP
16.	46620137	PANEL - FRONT
	46623320 (31)	PANEL - FRONT
17.	14496507	WASHER
18.	15688007	SCREW
19.	46632530	PROTECTION FOR ENGINE
20.	46632582	SUPPORT
21.	13275917	SCREW
22.	10516570	WASHER



1.	46626158 (48)	ROCKER REINF R/H
2.	46626159 (48)	ROCKER REINF L/H
3.	46626160 (48)	REINF - B - PILLAR FRONT R/H
4.	46626161 (48)	REINF - B - PILLAR FRONT L/H
5.	46626236 (48)	REAR REINF - B - PILLAR R/H
6.	46626237 (48)	REAR REINF - B - PILLAR L/H
7.	46626133 (48)	TAILGATE SILL REINF ASSY
8.	46626134 (48)	REAR CLOSE-OUT PANEL REINF ASSY
9.	46626135 (48)	UPPER TROUGH
10.	46626140 (48)	TAILGATE SILL
11.	46626474 (48)	UNDERBODY CROSS REINF
12.	46631951 (48)	LOWER ROCKER REINF R/H
13.	46631952 (48)	LOWER ROCKER REINF L/H
14.	46626108 (48)	FRONT QTR. REINF INNER ASSY R/H
15.	46626109 (48)	FRONT QTR. REINF INNER ASSY L/H
16.	46626244 (48)	A PILLAR SEAL RETAINER R/H
17.	46626245 (48)	A PILLAR SEAL RETAINER L/H
18.	10516570 (48)	WASHER LOCK
19.	13276017 (48)	SCREW M 6

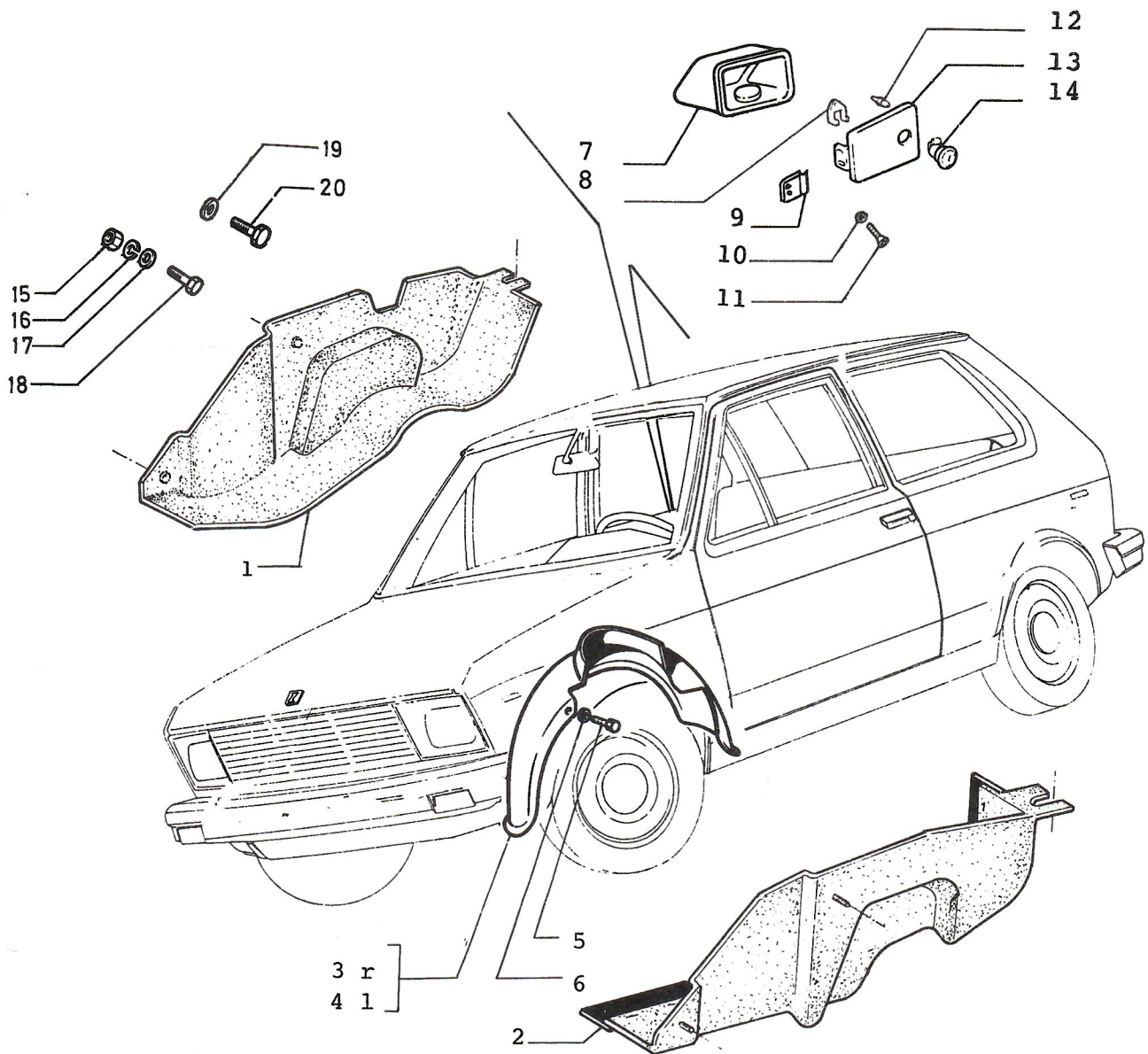


PROTECTION

71.06

1. 17674007(22,47,11)SCREW (M 12 x 32)
15904107 (58,50) SCREW
2. 46625537(22,47,11)SHIM
3. 14219290(22,47,11)NUT
4. 12624107(22,47,11)WASHER
12637807(22,47,11)WASHER
5. 15688507(22,47,11)SCREW (M 10 x 22)
6. 46625355 (22) PROTECTION
46628001 (47,11) PROTECTION (*1)
46629249(47,11,58)PROTECTION
46634191 (50) PROTECTION

NOTE 1: CANCELLED ITEM

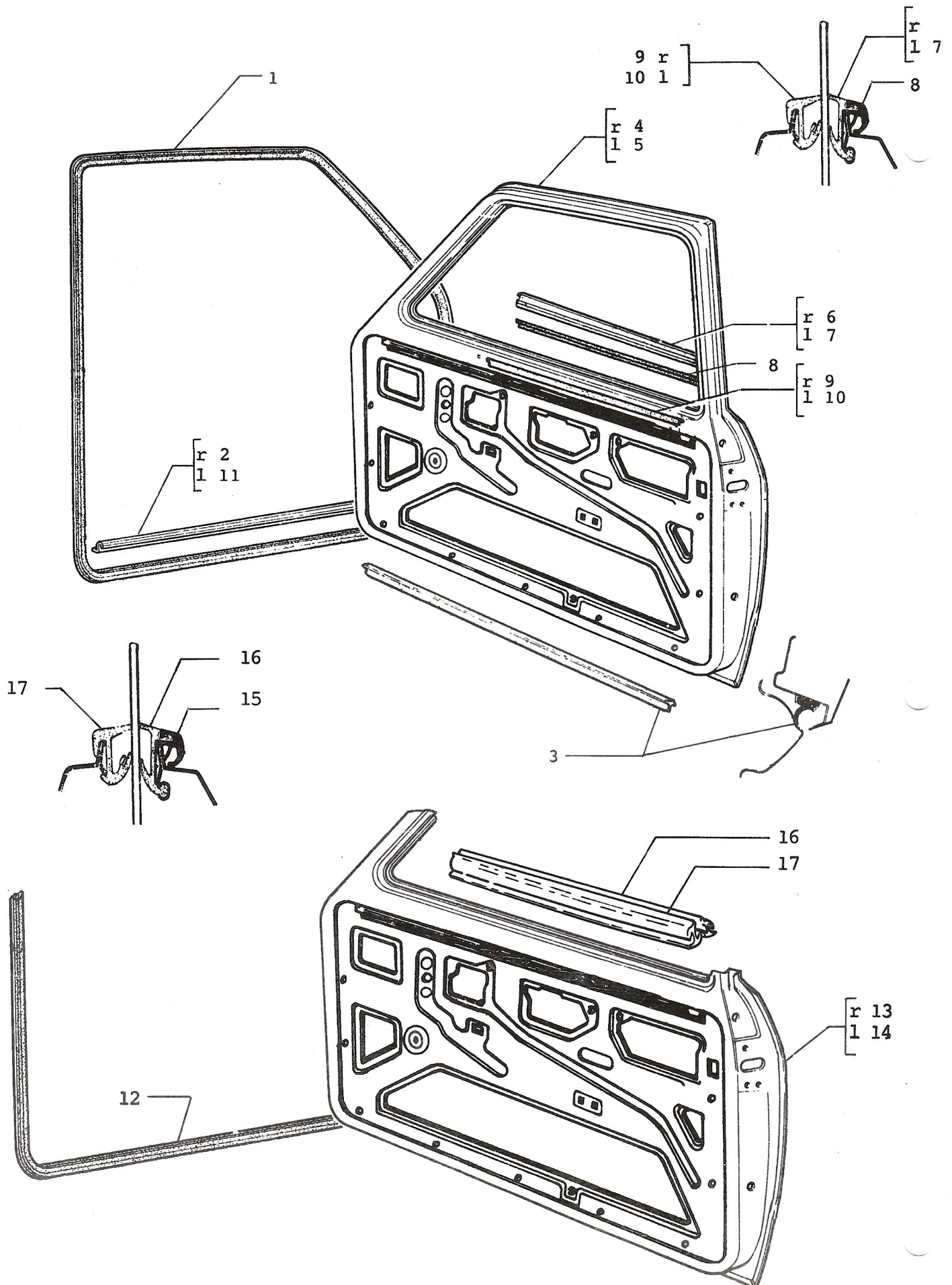


PROTECTION ITEMS

71.06/1

1.	4448748	PROTECTION
	46631957 (58)	PROTECTION
	46635230 (50)	PROTECTION
2.	4449463	PROTECTION
3.	46621505	PROTECTION
	46621838	PROTECTION
4.	46621506	PROTECTION
	46621839	PROTECTION
	46635639 (50)	PROTECTION
5.	15682001	SCREW
	15645507	SCREW
	15688307	SCREW M 10 x 16
6.	12624101	WASHER
	12624107	WASHER 5 x 22
7.	46629855 (58,48)	HOUSING
8.	4050791 (58,48)	LOCKWASHER
9.	4151335 (58,48)	HINGE
10.	12599079 (58,48)	WASHER
11.	13276001 (58,48)	SCREW
12.	4068085 (58,48)	BUMPER
13.	46629830 (58,48)	LID/CAP-FUEL LOCKING
14.	46629931 (58,48)	LOCK
15.	15896211 (58)	NUT *1
16.	10516170 (58)	WASHER - LOCK *1
17.	12643101 (58)	WASHER *1
18.	10902111 (58)	SCREW
19.	12643701 (50)	WASHER
20.	15903801 (50)	SCREW

NOTE 1: CANCELLED ITEM FOR (50)

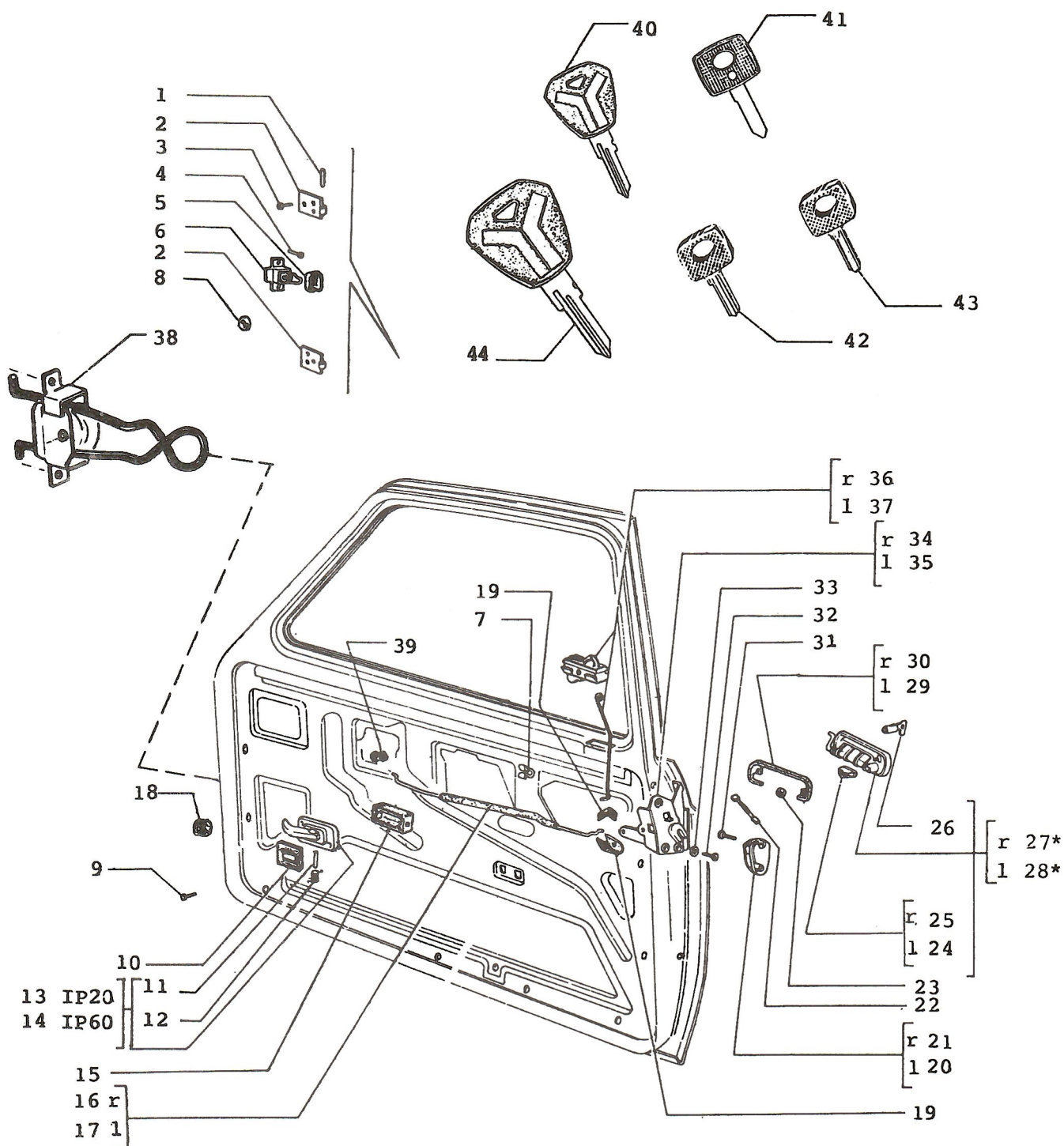


FRONT DOORS, DOOR GLASS AND TRIM PANELS

71.09

1.	46620942	WEATHERSTRIP - DOOR
	46622502	WEATHERSTRIP - DOOR
2.	46620181	MOULDING - DOORSILL R/H
3.	4454054	WEATHERSTRIP
4.	46620767	DOOR - COMPLETE R/H
	46625401 (22,47,11)	DOOR - COMPLETE R/H
	46623377 (31)	DOOR - COMPLETE R/H
5.	46620768	DOOR - COMPLETE L/H
	46625402 (22,47,11)	DOOR - COMPLETE L/H
	46623378 (31)	DOOR - COMPLETE L/H
6.	4460197	CHANNEL - WINDOW R/H
7.	4460198	CHANNEL - WINDOW L/H
8.	4457683	MOULDING - DRIP/WINDOW
9.	4417888	WEATHERSTRIP - DOOR GLASS
10.	4417889	WEATHERSTRIP - DOOR GLASS
11.	46620728	MOULDING - DOORSILL L/H
12.	46629159 (48)	DOOR - OPENING W/STRIP
13.	46626162 (48)	DOOR - COMPLETE R/H
14.	46626163 (48)	DOOR - COMPLETE L/H
15.	46629158 (48)	MOULDING - DRIP/WINDOW
16.	46626487 (48)	W/STRIP - OUTER DOOR
17.	46626486 (48)	W/STRIP - INNER DOOR

S (58) *) 46630422=46629931 (71.06/1)+46622905+46622906+46622908 (71.15)
 (48) *) 91704258=46629931 (71.06/1)+46622905+46622906+91704257 (71.16)+4425170 (71.16)



S (*3) *) 46620968=46620932 (12.01)+46620965+46620966+46620971 (71.15)
 (*4) *) 46622406=46622407 (12.01)+1617954+1617955+4441998 (71.15)
 (*5) *) 46622901=46622900 (12.01)+46622905+46622906+46622908 (71.15)
 (*5) *) 46626803=46626700 (12.01)+46622905+46622906+46622908 (71.15)
 (31) *) 46623463=46620248 (12.01)+46622905+46622906+46622908 (71.15)
 (31) *) 46626804=46626698 (12.01)+46622905+46622906+46622908 (71.15)

FRONT DOORS, DOOR GLASS AND TRIM PANELS

71.09/1

1.	4331448	PIN - DOOR HINGE
2.	4380802	HINGE - DOOR
3.	4335312	SCREW - DOOR - HINGE
4.	13836071	SCREW (M6x12)
5.	4186666	WEATHERSTRIP - DOOR CHECK
6.	4434588	CHECK - DOOR (*1)
7.	14569680	CLIP - DOOR LOCK CONTROL
8.	4252982	RIG - DOOR HINGE
9.	17671207	SCREW
10.	4294235	GASKET - INNER DOOR HANDLE
11.	4133879	PIN - DOOR HANDLE
12.	4272876	SPRING - DOOR HANDLE
13.	46620604	HANDLE - DOOR IP 20
14.	46620605	HANDLE - DOOR IP 60
15.	4421110	HOUSING
16.	4420136	ROD - DOOR LOCK CONTROL
17.	4420139	ROD - DOOR LOCK CONTROL
18.	46621733	GROOVED - BUSH
19.	4109896	SUPPORT - DOOR LOCK ROD
20.	4222579	PLATE - STRIKER L/H
21.	4222578	PLATE - STRIKER R/H
22.	4417900	LEVER - DOOR LOCK
23.	13831801	NUT
24.	4178141	BAND - DOOR HANDLE/OUTER
25.	4178140	BAND - DOOR HANDLE/OUTER
26.	46620990	CYLINDER - LOCK W/KEY (*3)
	4158311	CYLINDER - LOCK W/KEY (*4)
	46622898	CYLINDER - LOCK W/KEY (*5)
27.	46620965	HANDLE - DOOR/OUTER R/H (*3)
	1617954	HANDLE - DOOR/OUTER R/H (*4)
	46622905	HANDLE - DOOR/OUTER R/H (*5)
28.	46620966	HANDLE - DOOR/OUTER L/H (*3)
	1617955	HANDLE - DOOR/OUTER L/H (*4)
	46622906	HANDLE - DOOR/OUTER L/H (*5)
29.	4201848	GASKET L/H
30.	4201847	GASKET R/H
31.	13325821	SCREW
32.	13312707	SCREW
33.	12606877	WASHER
34.	46621353	LOCK - DOOR R/H
35.	46621354	LOCK - DOOR L/H
36.	4454140	ROD - DOOR LOCK CONTROL
37.	4454141	ROD - DOOR LOCK CONTROL
38.	46622981	CHECK - DOOR (*2)
39.	14578083	SLEEVE - DOOR LOCK ROD
40.	46600333	KEY (*3)
41.	46622398	KEY (*4)
42.	46602150	KEY (*4)
43.	46602151	KEY (*4)
44.	46600854	KEY (*5)
S	46620968	SET - LOCK COMPLETE (*3)
S	46622406	SET - LOCK COMPLETE (*4)
S	46622901	SET - LOCK COMPLETE (*5)
S	46626803	SET - LOCK COMPLETE (*5)
S	46623463 (31)	SET - LOCK COMPLETE
S	46626804 (31)	SET - LOCK COMPLETE

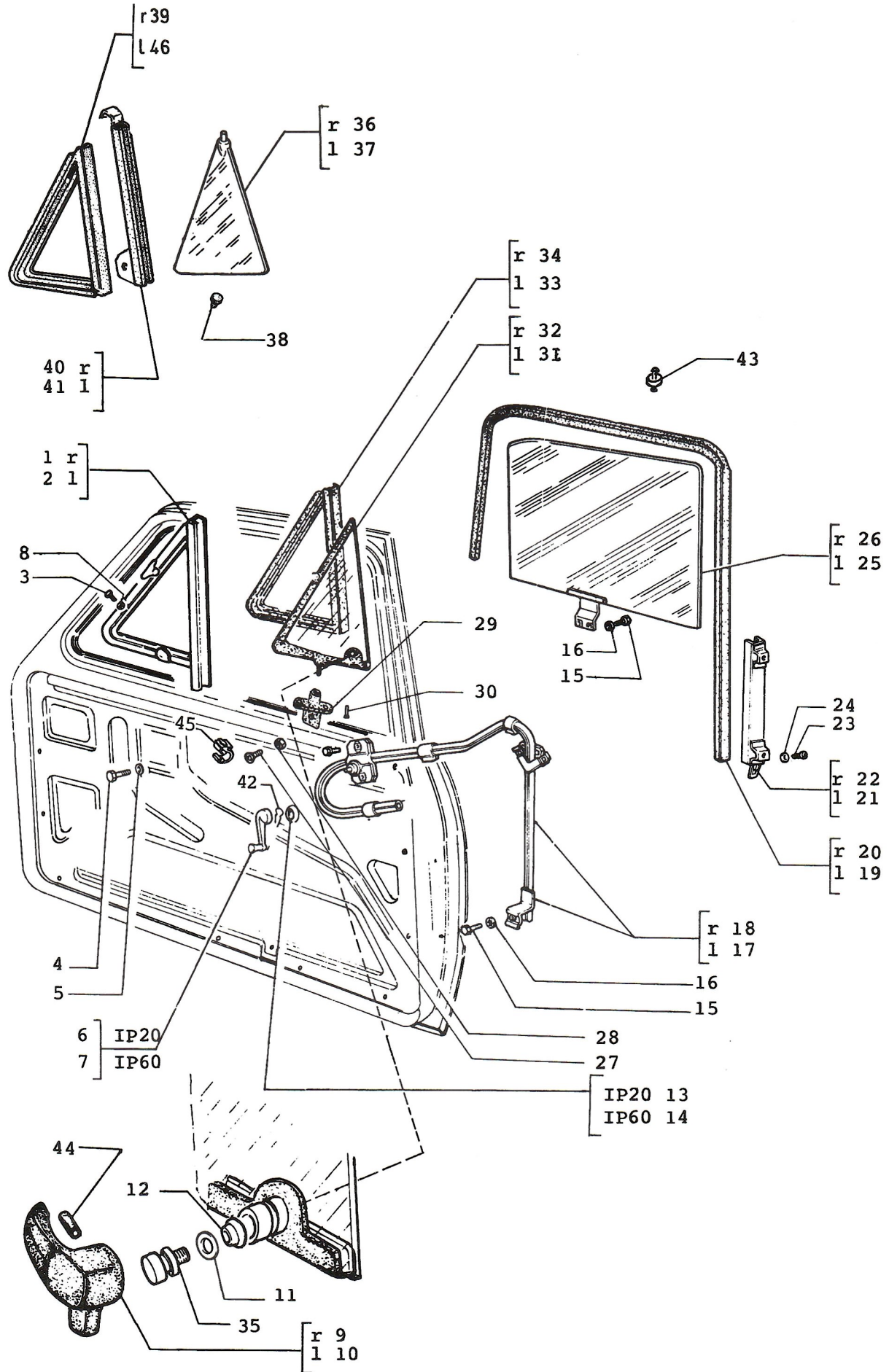
NOTE 1: 1 ST TYPE USED UP TO CAR No 39683

NOTE 2: 2 ND TYPE USED FROM CAR No 39684

NOTE 3: 1 ST TYPE USED UP TO CAR No 25852

NOTE 4: 2 ND TYPE USED FROM CAR No 25853 UP TO CAR No 40707 AND ALSO FROM CAR No 41135 UP TO CAR No 44463

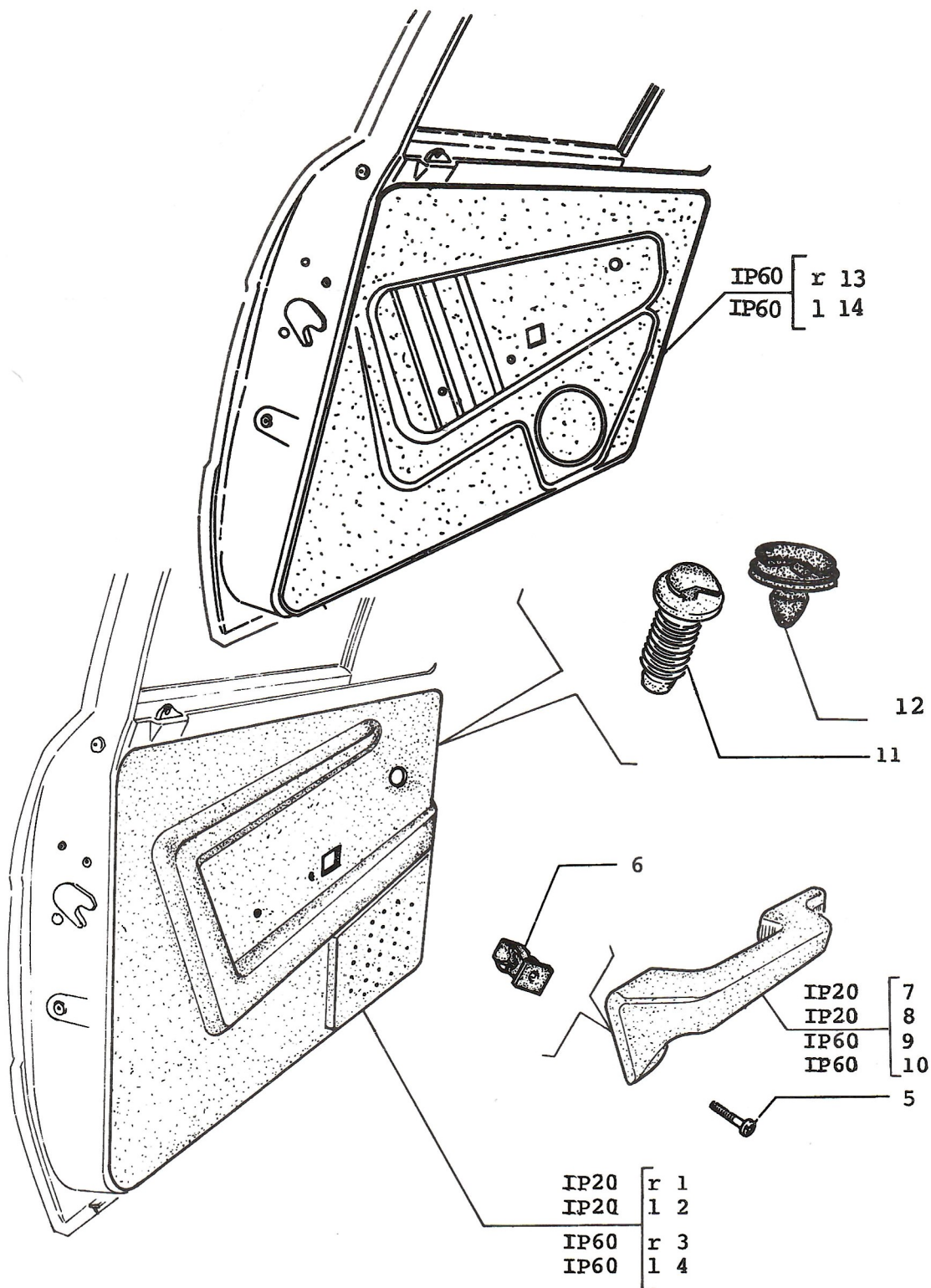
NOTE 5: 3 RD TYPE USED FROM CAR No 40708 UP TO CAR No 41136 AND ALSO FROM CAR No 44464 AND TO BE CONTINUED IN PRODUCTION



FRONT DOORS, DOOR GLASS AND TRIM PANELS

71.09/2

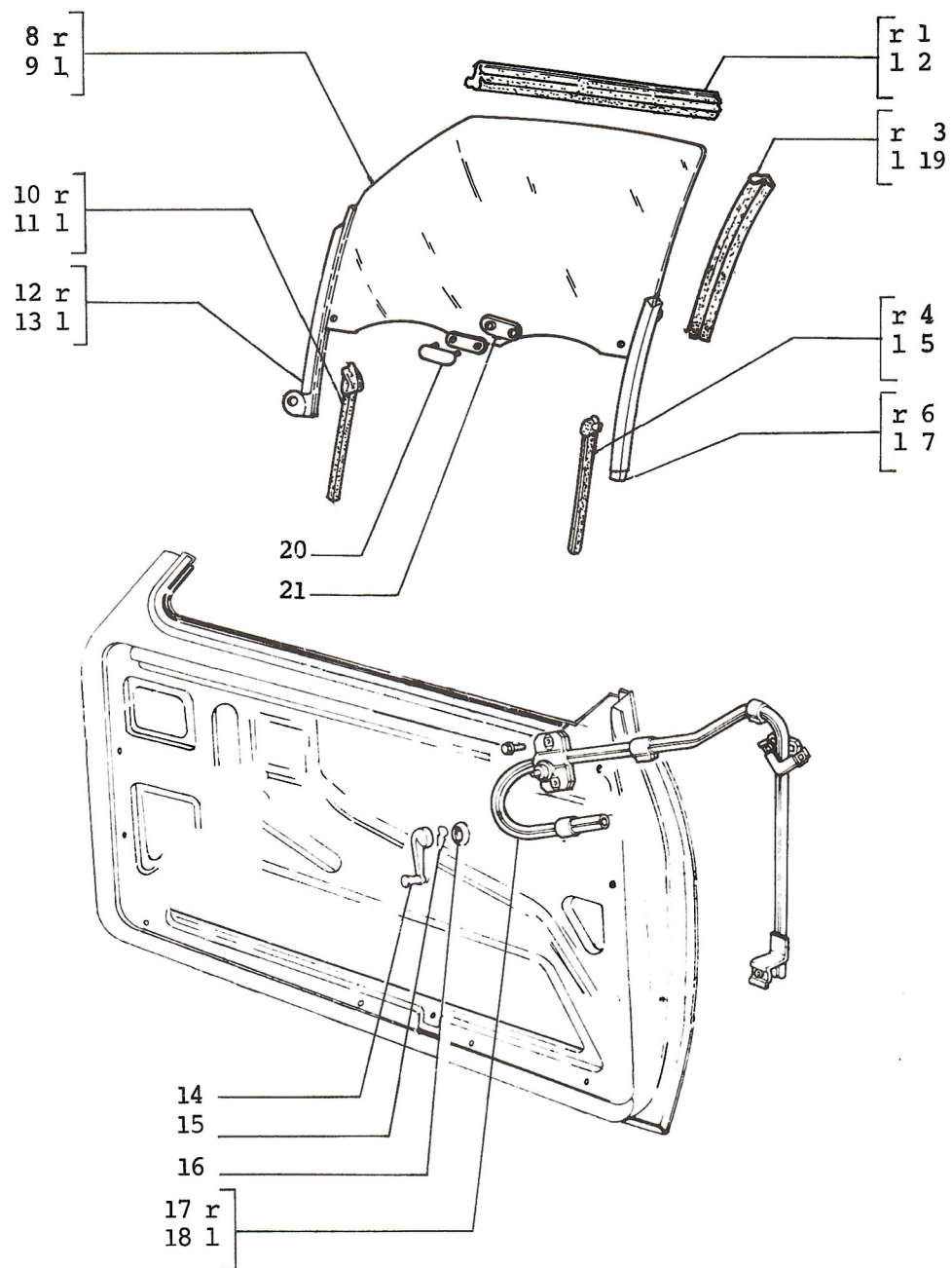
1.	4473248	FRAME - VENT GLASS R/H
2.	4473249	FRAME - VENT GLASS L/H
3.	1619274	SCREW
4.	10979421	SCREW
5.	12598271	WASHER
6.	46620623	HANDLE - WINDOW REGULATOR IP20
7.	46620624	HANDLE - WINDOW REGULATOR IP60
8.	4348824	WASHER
9.	1619278	HANDLE - R/H VENT GLASS
	4473271	HANDLE - R/H VENT GLASS
10.	1619279	HANDLE - L/H VENT GLASS
	4473272	HANDLE - L/H VENT GLASS
11.	4212498	WASHER
12.	4473273	NUT
13.	46620655	RING IP20
14.	46620656	RING IP60
15.	10979411	SCREW
16.	12598271	WASHER
17.	4419574	REGULATOR - WINDOW L/H
18.	4419573	REGULATOR - WINDOW R/H
19.	46621325	CHANNEL - DOOR L/H
	46625043 (22,47,11)	CHANNEL - DOOR L/H
20.	4420140	CHANNEL - DOOR R/H
	46625042 (22,47,11)	CHANNEL - DOOR R/H
21.	4417891	CHANNEL - L/H DOOR GLASS
22.	4417890	CHANNEL - R/H DOOR GLASS
23.	14778707	SCREW
24.	12599071	LOCKWASHER
25.	4411369	GLASS - DOOR L/H
26.	4411368	GLASS - DOOR R/H
27.	15965911	SCREW
28.	15896411	NUT
29.	4473269	SUPPORT
30.	1615962	SCREW GLASS VENT
31.	1619696	GLASS - DOOR
32.	1619695	GLASS - DOOR
33.	4473253	WEATHERSTRIP - VENT WINDOW
34.	4473252	WEATHERSTRIP - VENT WINDOW
35.	4473270	AXLE GLASS VENT
36.	4409865	GLASS - DOOR
37.	4409866	GLASS - DOOR
38.	4418006	PLUG
39.	4411372	WEATHERSTRIP
40.	4452371	CHANNEL - GLASS R/H
41.	4452372	CHANNEL - GLASS L/H
42.	4138439	CLIP - WINDOW CRANK HANDLE
43.	4378932	SUPPORT
44.	13897570	BUTTON - SPRING
45.	14570680	SLEEVE
46.	46622039	WEATHERSTRIP L/H



FRONT DOORS, DOOR GLASS AND TRIM PANELS

71.09/3

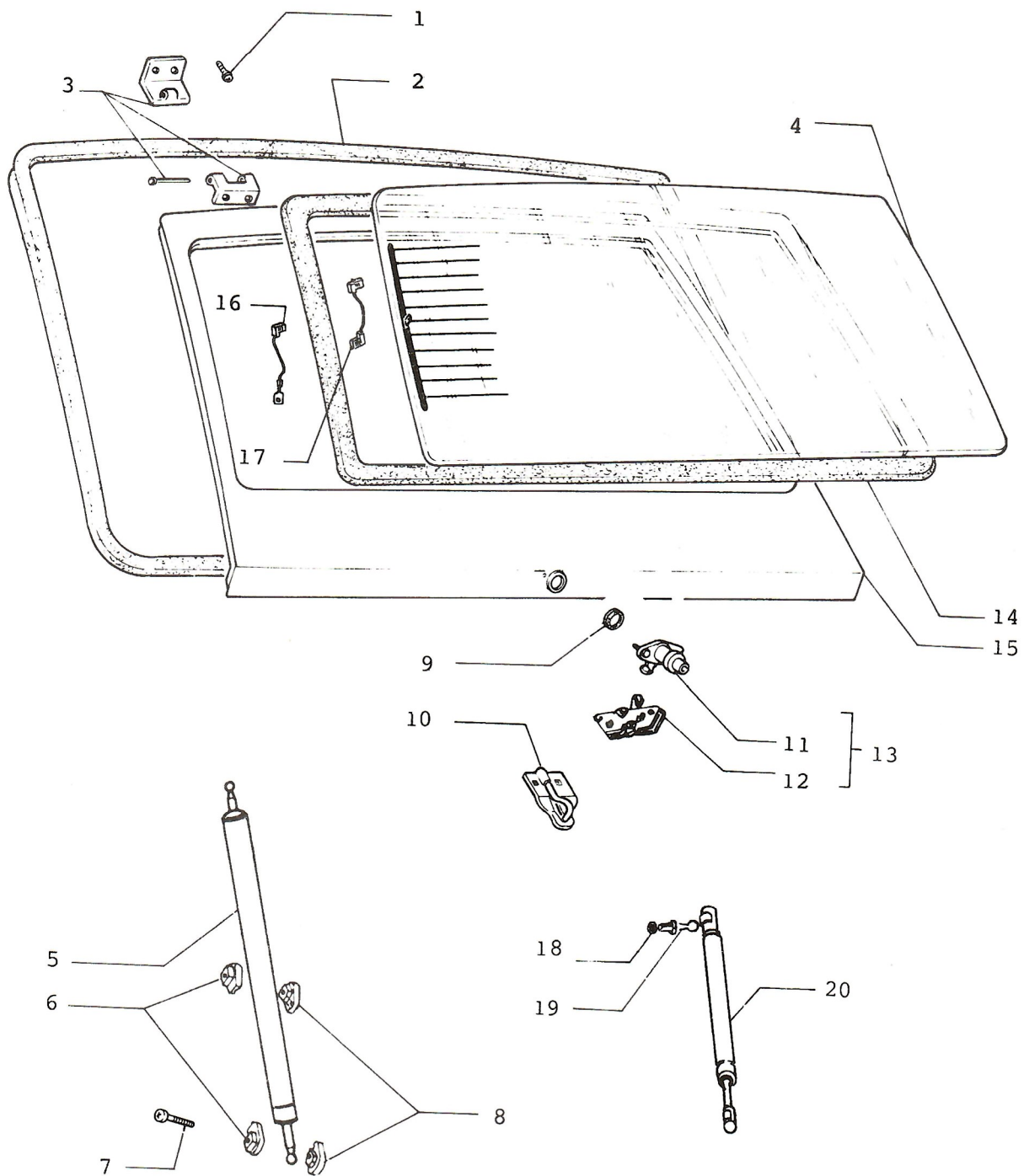
1.	46621127	PANEL - DOOR IP20 R/H
	46621693	PANEL - DOOR IP20 R/H
2.	46621128	PANEL - DOOR IP20 L/H
	46621694	PANEL - DOOR IP20 L/H
3.	46621131	PANEL - DOOR IP60 R/H
	46621689	PANEL - DOOR IP60 R/H
	46631155 (58)	PANEL - DOOR IP60 R/H
4.	46621132	PANEL - DOOR IP60 L/H
	46621690	PANEL - DOOR IP60 L/H
	46631156 (58)	PANEL - DOOR IP60 L/H
5.	15647407	SCREW
	15904907 (48)	SCREW 12 x 38
6.	14203080	CLIP
	46625155 (48)	CLIP
7.	46620640	ARMREST - IP20 R/H
8.	46620641	ARMREST - IP20 L/H
9.	46620642	ARMREST - IP60 R/H
10.	46620643	ARMREST - IP60 L/H
11.	14188180	CLIP
12.	4399987 (58,48)	CLIP
13.	46626642 (48)	PANEL - DOOR IP60 R/H
14.	46626643 (48)	PANEL - DOOR IP60 L/H



FRONT DOORS, DOOR GLASS AND TRIM PANELS

71.08/4

1.	46631234 (48)	SEAL FRONT SIDL RAIL ASSY R/H (495,3 mm)
2.	46631235 (48)	SEAL FRONT SIDL RAIL ASSY L/H (495,3 mm)
3.	46626339 (48)	SEAL - "B" PILLAR R/H
4.	46626224 (48)	REAR DOOR CHANNEL W/STRIP ASSY R/H
5.	46626225 (48)	REAR DOOR CHANNEL W/STRIP ASSY L/H
6.	46626208 (48)	CHANNEL/DOOR - GLASS R/H
7.	46626209 (48)	CHANNEL/DOOR - GLASS L/H
8.	46626222 (48)	GLASS - DOOR - COMPL R/H
9.	46626223 (48)	GLASS - DOOR - COMPL L/H
10.	46626481 (48)	FRONT DOOR CHANNEL R/H
11.	46626482 (48)	FRONT DOOR CHANNEL L/H
12.	46626206 (48)	CHANNEL/DOOR - GLASS R/H
13.	46626207 (48)	CHANNEL/DOOR - GLASS L/H
14.	46620624	HANDLE - WINDOW REGULATOR IP60
15.	14570680	SLEEVE
16.	46620656	RING IP60
17.	46631829 (48)	REGULATOR - WINDOW R/H
18.	46631830 (48)	REGULATOR - WINDOW L/H
19.	46626338 (48)	SEAL - "B" PILLAR L/H
20.	46627321 (48)	STUD PLATE ASSY
21.	46629157 (48)	WASHER - GLASS ATTACHMENT



REAR DOOR ASSEMBLY

71,15

APRIL 1990.

REAR DOOR ASSEMBLY

71.15

1.	13838071	SCREW
2.	46620943	WEATHERSTRIP - REAR HATCH
	46622503	WEATHERSTRIP - REAR HATCH
3.	1615933	HINGE - ASSY REAR HATCH
4.	1616876	GLASS - REAR DOOR
	46622823 (27)	GLASS - REAR DOOR
	46627036 (27)	GLASS - REAR DOOR (*6)
	46627777 (31)	GLASS - REAR DOOR (*7)
5.	4423581	STRUT - HATCH
6.	1026767	STRAP - GRAB
7.	13304011	SCREW
	13304017	SCREW
8.	1026768	STRAP - GRAB
9.	4427042	RING - LOCK/REAR HATCH
10.	4425172	STRIKER - REAR DOOR
11.	46620969	CHANNEL (*1)
	4434526	CHANNEL (*2)
	46622899	CHANNEL (*3)
12.	4425170	LATCH - REAR DOOR
13.	46620971	LOCK - ASSY REAR HATCH (*1)
	4441998	LOCK - ASSY REAR HATCH (*2)
	46622908	LOCK - ASSY REAR HATCH (*3)
14.	46621101	WEATHERSTRIP
	46627557	WEATHERSTRIP (*6) (*7)
15.	46620142	DOOR - REAR (*4)
	46602388	DOOR - REAR (*5)
16.	4307442	CABLE
17.	46621528	CABLE
	46624115 (27)	CABLE
18.	10519607	WASHER (*5)
19.	46621976	SCREW (*5)
20.	46621918	STRUT - HATCH (*5)

NOTE 1: 1 ST TYPE USED UP TO CAR No 25852

NOTE 2: 2 ND TYPE USED FROM CAR No 25853 UP TO CAR No 40707 AND ALSO FROM CAR No 41135 UP TO CAR No 44463

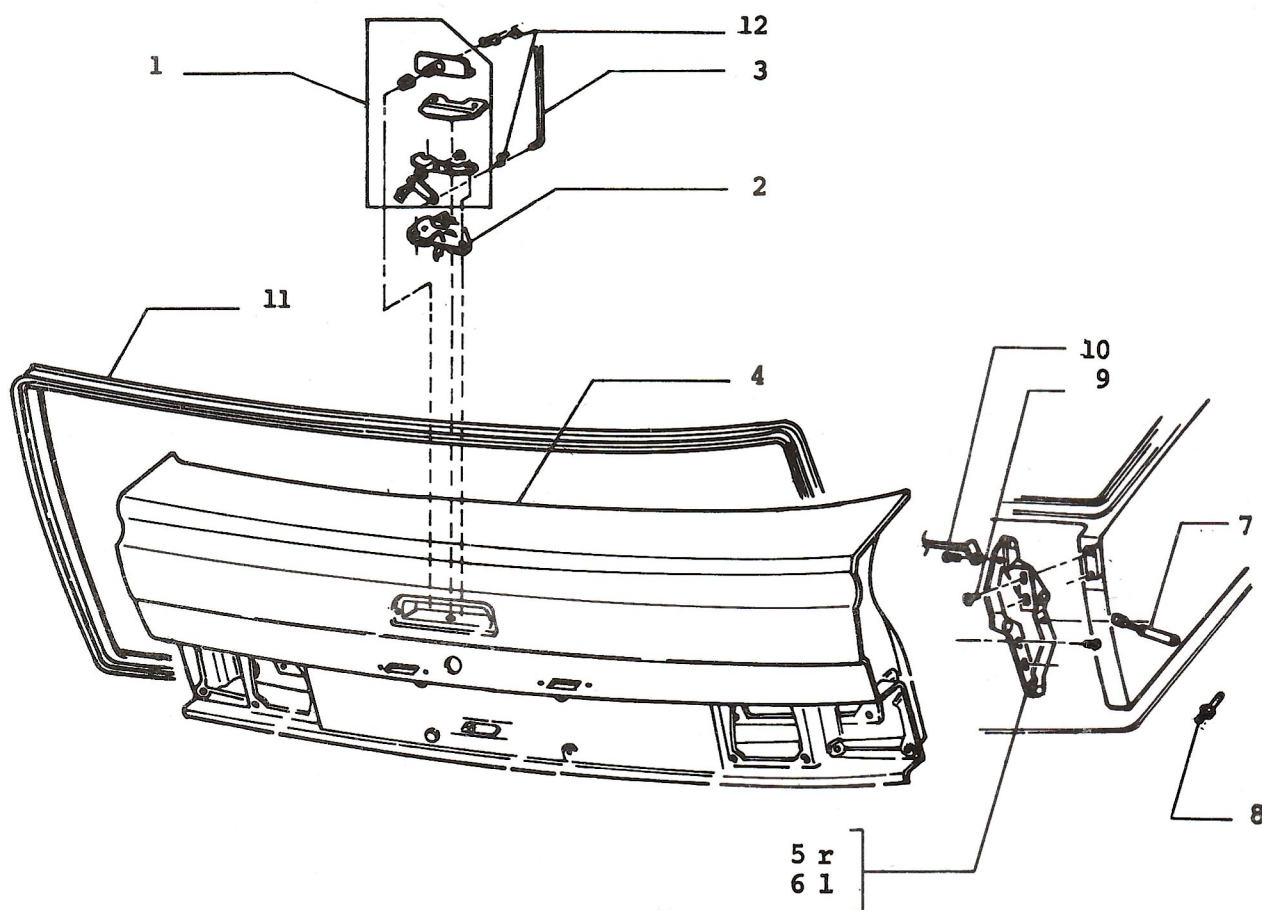
NOTE 3: 3 RD TYPE USED FROM CAR No 40708 UP TO CAR No 41136 AND ALSO FROM CAR No 44464 AND TO BE CONTINUED IN PRODUCTION

NOTE 4: 1 ST TYPE USED UP TO CAR No 30148 VIN 387317 (07.29.1987.)

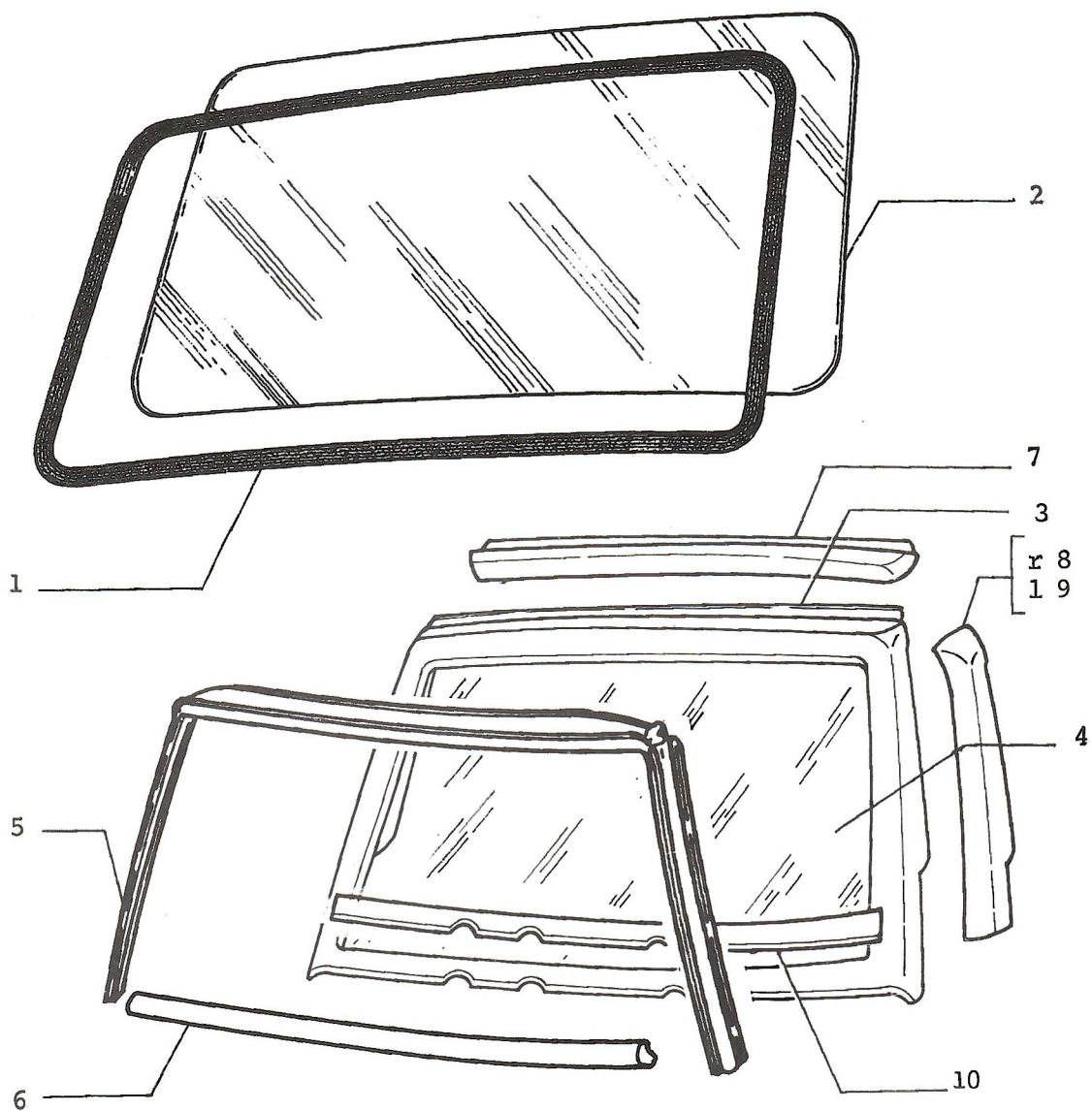
NOTE 5: 2 ND TYPE USED FROM CAR No 30149 VIN 387318

NOTE 6: 2 ND TYPE USED FROM CAR No 13912 VIN 432514 (03.24.1988.)

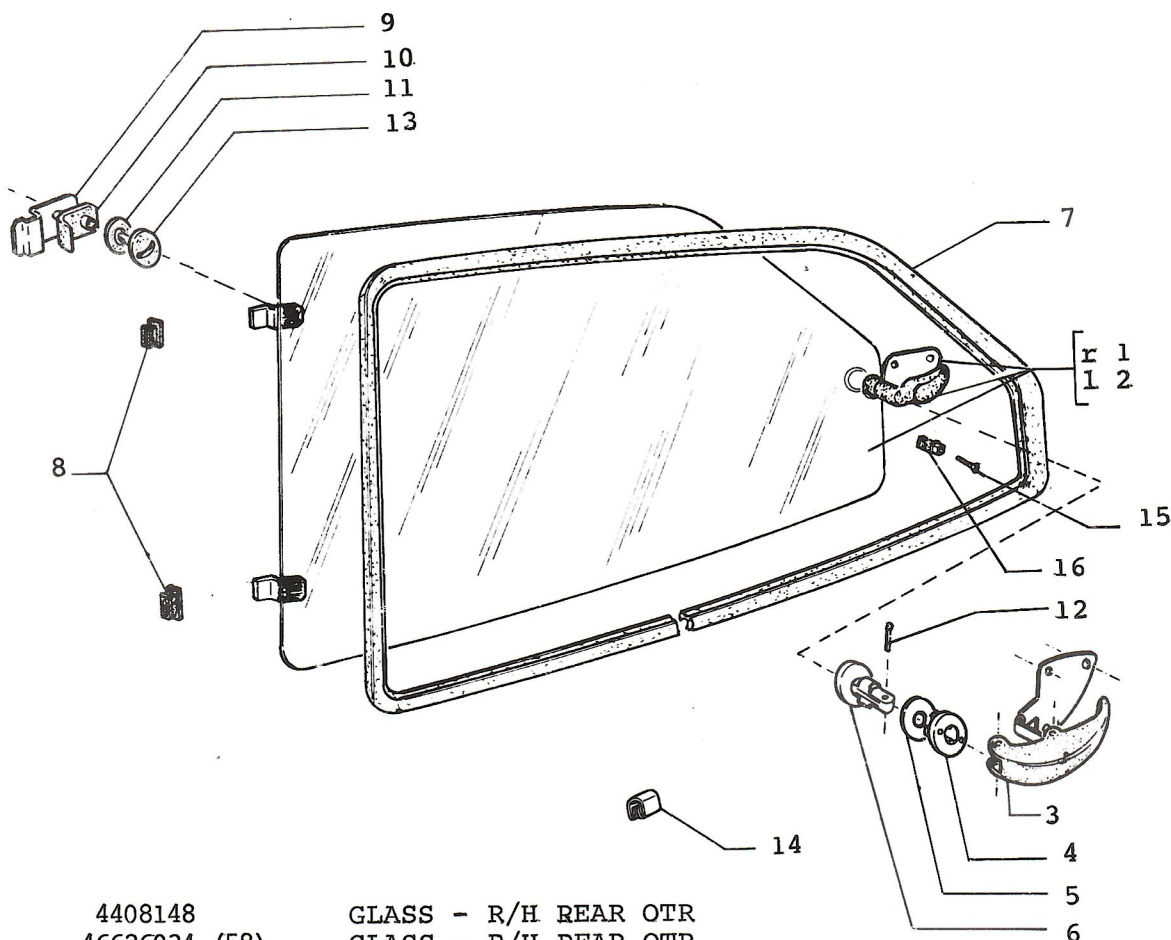
NOTE 7: 2 ND TYPE USED FROM CAR No 13856 VIN 432466 (03.24.1988.)



1.	91704257 (48)	CHANEL
2.	4425170	LATCH - TAILGATE
3.	46626314 (48)	ROD - LATCH LOCK CONTROL
4.	46626488 (48)	TAILGATE COMPL
5.	46626489 (48)	HINGE ASSY - TAILGATE R/H
6.	46626490 (48)	HINGE ASSY - TAILGATE L/H
7.	46626499 (48)	GAS - STRUT
8.	46621976 (48)	SCREW
9.	13836021 (48)	SCREW M6 x 12
10.	46630937 (48)	ROD
11.	46630044 (48)	W/STRIP TAILGATE
12.	14578083	SLEEVE



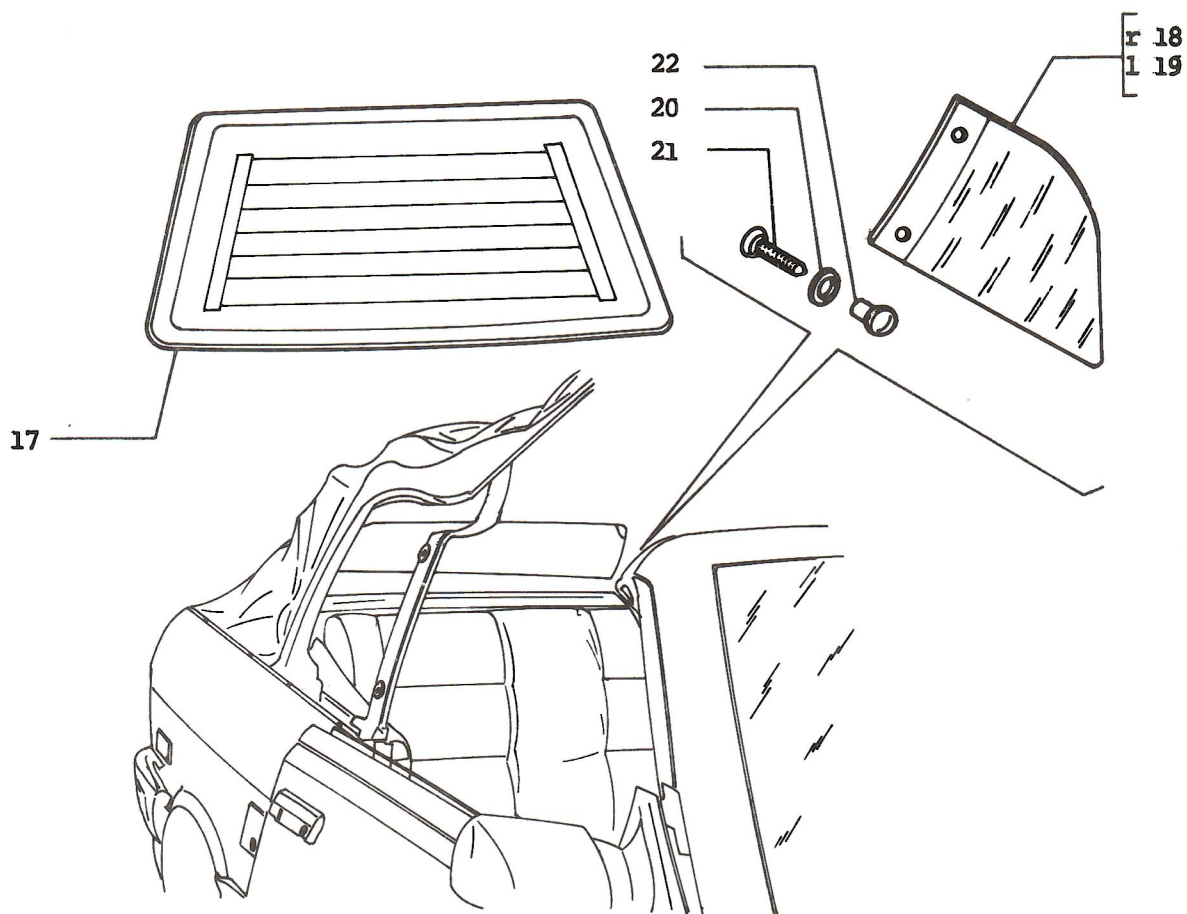
1.	46621204	WEATHERSTRIP - WINDSHIELD
	4405040	WEATHERSTRIP - WINDSHIELD
2.	4405031	WINDSHIELD
3.	46629541 (48)	MOLDING - WINDSHIELD FRAME - OTR
4.	46630851 (48)	WINDSHIELD
5.	46626251 (48)	A-PILLAR HEADER W/STRIP ASSY
6.	46630669 (48)	W/STRIP - W/SHIELD FENCE
7.	46634223 (48)	MOULDING
8.	46634221 (48)	MOULDING R/H
9.	46634222 (48)	MOULDING L/H
10.	46634224 (48)	MOULDING



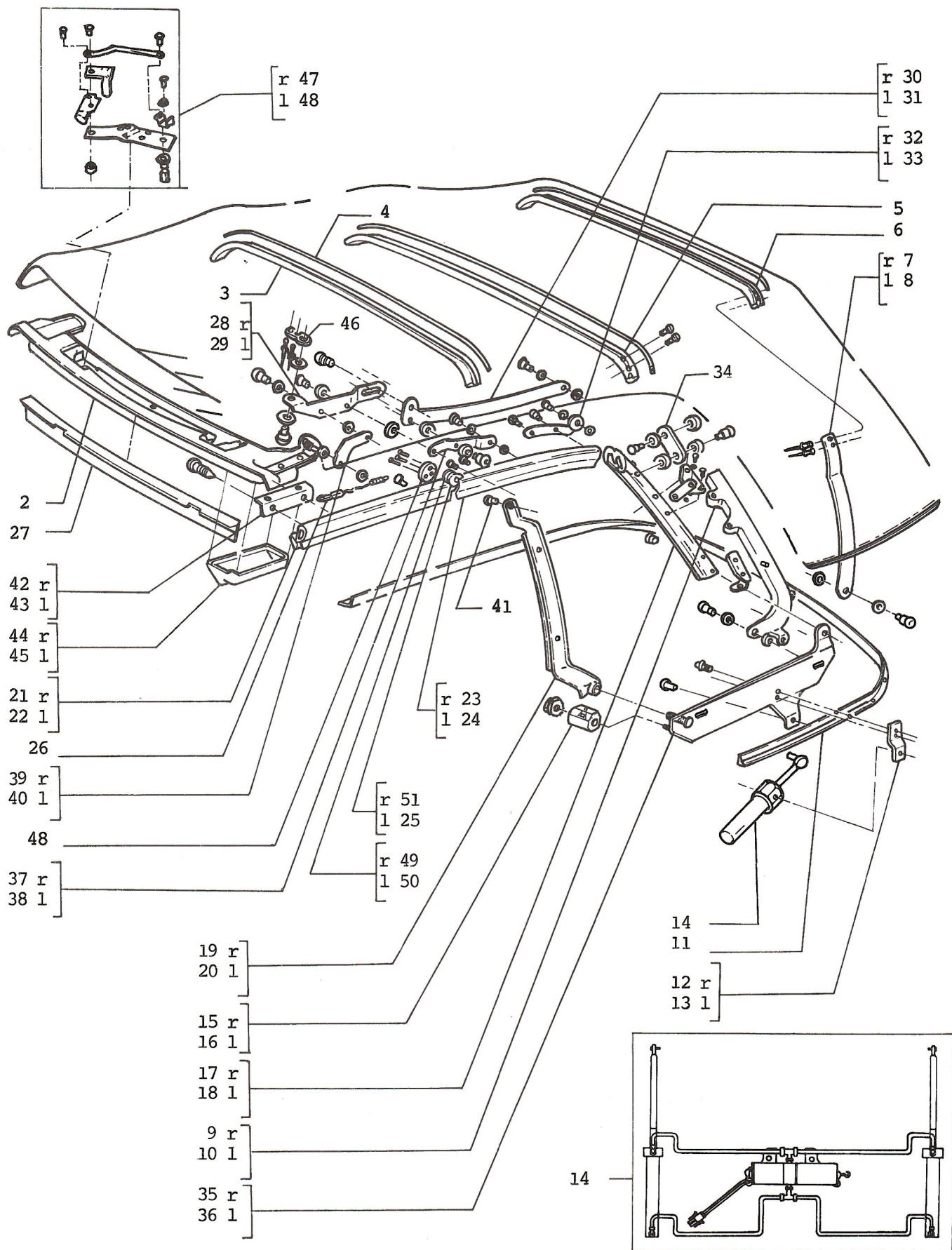
1.	4408148	GLASS - R/H REAR OTR
	46626034 (58)	GLASS - R/H REAR OTR
2.	4408149	GLASS - L/H REAR OTR
	46626035 (58)	GLASS - L/H REAR OTR
3.	4251145	HANDLE - REAR OTR/WINDOW
	46623636 (58)	HANDLE - REAR OTR/WINDOW
4.	4373915	CASING
5.	4374564	WASHER
6.	4397231	PIN
	46626033 (58)	PIN
7.	46620941	W/STRIP - REAR QUARTER GLASS (*1)
	46622504	W/STRIP - REAR QUARTER GLASS (*2)
8.	4254944	BUSING - HINGE/REAR QTR/WINDOW
9.	4376750	PLATE
10.	4376753	SHANNEL
	46626029 (58)	SHANNEL
11.	4376755	WASHER
12.	13766707	PIN HANDLE - REAR QTRIWINDOW
	46623637 (58)	PIN HANDLE - REAR QTRIWINDOW
13.	4376754	SCREW
14.	1119117	CLIP - RR/QTR/GLASS WEATHERSTRIP (*1)
15.	15674307	SCREW
16.	14202985	CLIP

NOTE 1: 1 ST TYPE USED UP TO CAR No 33624

NOTE 2: 2 ND TYPE USED FROM CAR No 33625



- | | | |
|-----|---------------|----------------------|
| 17. | 46631204 (48) | GLASS - REAR |
| 18. | 46626269 (48) | GLASS - REAR OTR R/H |
| 19. | 46626270 (48) | GLASS - REAR OTR L/H |
| 20. | 46631527 (48) | WASHER |
| 21. | 14063807 (48) | SCREW |
| 22. | 46631528 (48) | PLUG |



TOPSTACK ASSY

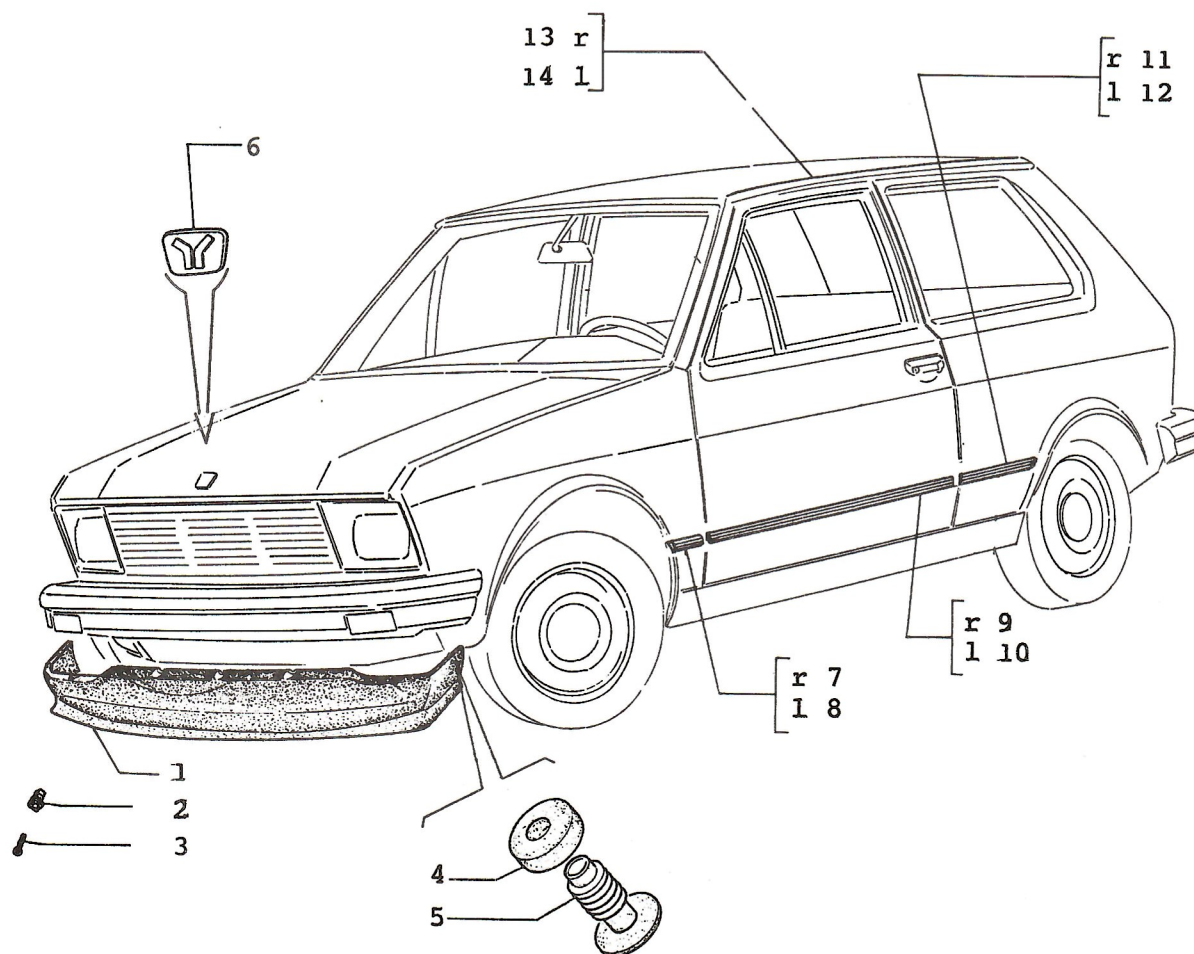
71.22

APRIL 1990.

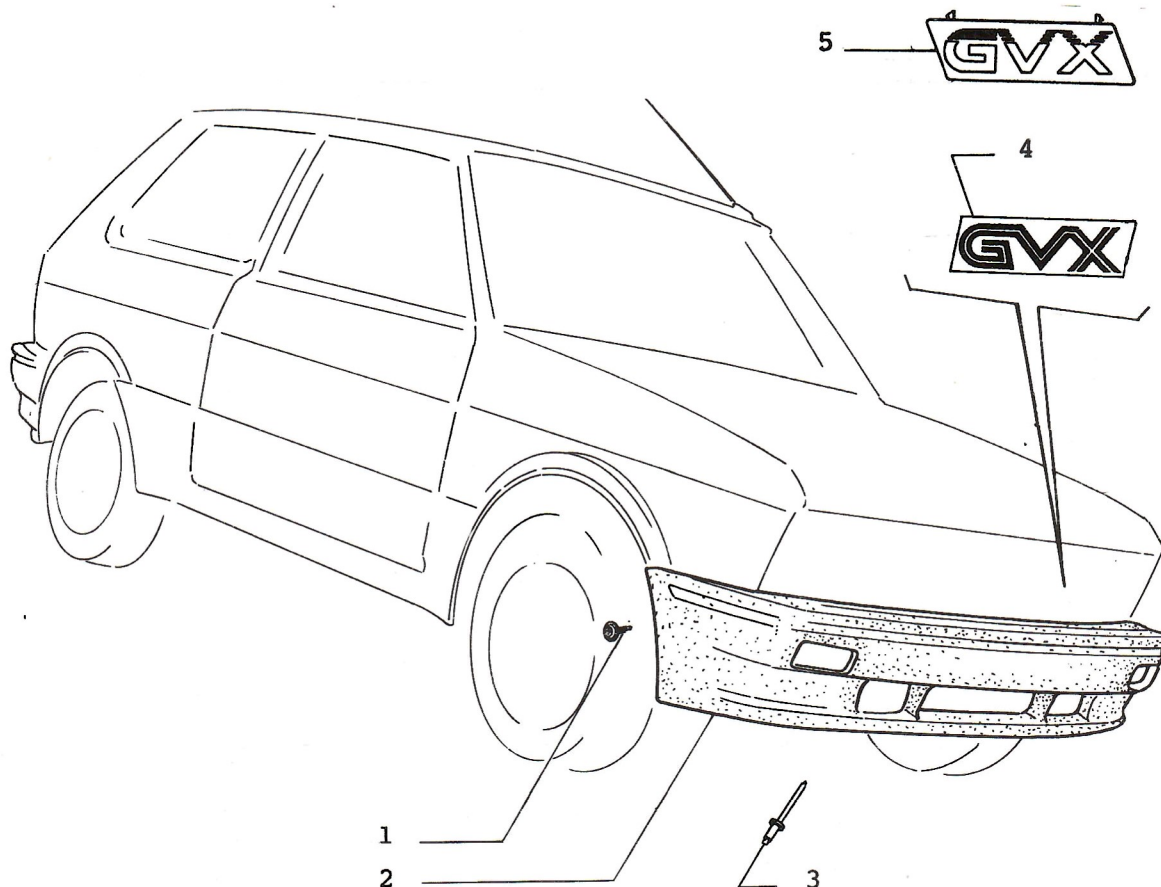
TOPSTACK ASSY

71.22

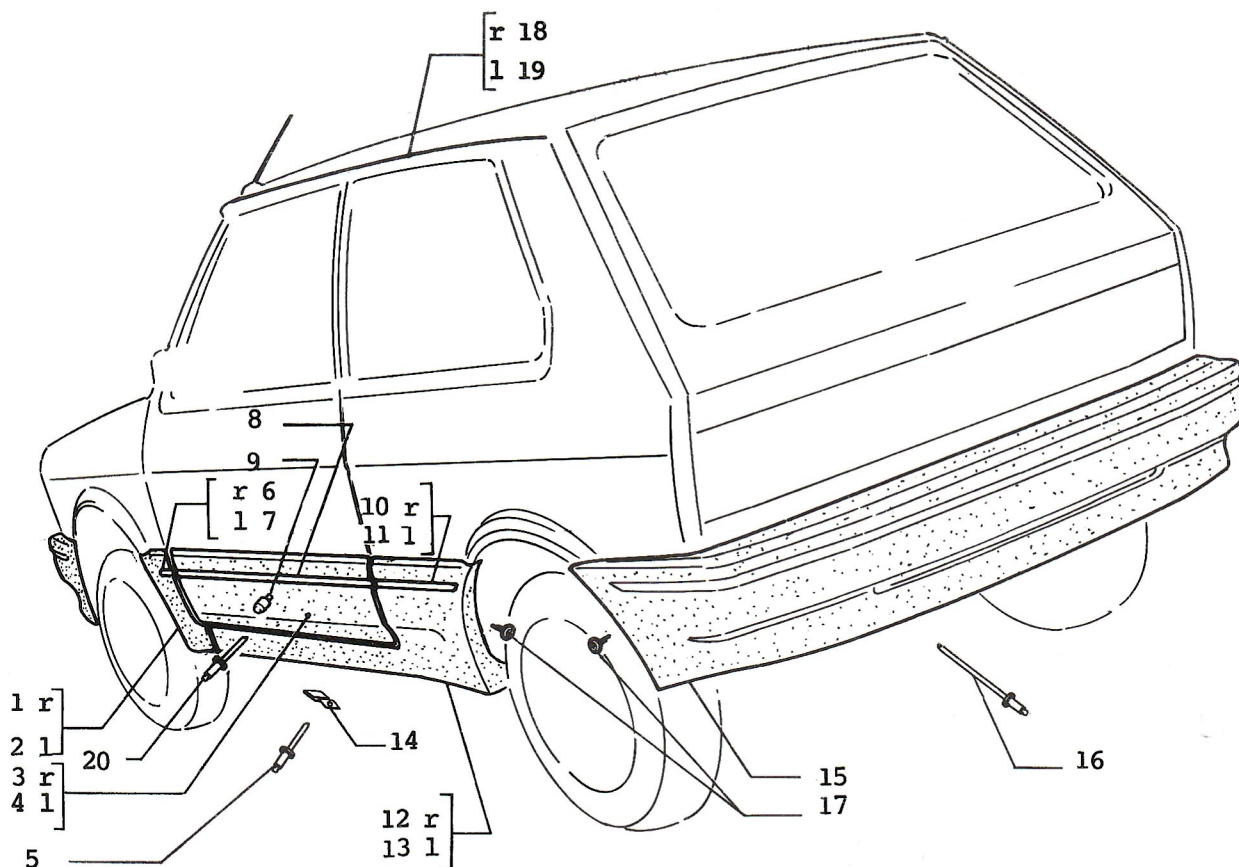
1.	46626266 (48)	TOP MATERIAL
2.	46631194 (48)	HEADER
3.	46631195 (48)	* 2 BOW
4.	46631219 (48)	RETAINER * 2 BOW
5.	46631196 (48)	* 3 BOW
6.	46631197 (48)	* 4 BOW
7.	46631211 (48)	CONNECT LINK * 4 BOW R/H
8.	46631212 (48)	CONNECT LING * 4 BOW L/H
9.	46631198 (48)	C - PILLAR R/H
10.	46631199 (48)	C - PILLAR L/H
11.	46630451 (48)	TACKSTRIP
12.	46631213 (48)	SUPPORT/HYD.CYL.
13.	46631214 (48)	SUPPORT/HYD.CYL.
14.	46630649 (48)	HYD.CYL.SYSTEM
15.	46631191 (48)	B - PILLAR CAM R/H
16.	46631192 (48)	B - PILLAR CAM L/H
17.	46631200 (48)	C - PILLAR SEAL RETAINER R/H
18.	46631201 (48)	C - PILLAR SEAL RETAINER L/H
19.	46631202 (48)	B - PILLAR R/H
20.	46631203 (48)	B - PILLAR L/H
21.	46631187 (48)	FRT SIDE RAIL R/H
22.	46631188 (48)	FRT SIDE RAIL L/H
23.	46631205 (48)	REAR SIDE RAIL R/H
24.	46631206 (48)	REAR SIDE RAIL L/H
25.	46626324 (48)	OUTER SIDE RAIL HINGE L/H
26.	46631253 (48)	CABLE ASSY
27.	46630670 (48)	HEADER SKIN RETAINER
28.	46626323 (48)	* 2 PIVOT LINK R/H
29.	46626322 (48)	* 2 PIVOT LINK L/H
30.	46626329 (48)	* 3 PIVOT LINK R/H
31.	46626328 (48)	* 3 PIVOT LINK L/H
32.	46631209 (48)	* 5 PIVOT LINK R/H
33.	46631210 (48)	* 5 PIVOT LINK L/H
34.	46631216 (48)	QTR WINDOW SEAL PIVOT
35.	46630452 (48)	TOPSTACK MTG R/H
36.	46630453 (48)	TOPSTACK MTG L/H
37.	46626321 (48)	* 4 PIVOT LINK R/H
38.	46626320 (48)	* 4 PIVOT LINK L/H
39.	46626295 (48)	* 1 PIVOT LINK R/H
40.	46626294 (48)	* 1 PIVOT LINK L/H
41.	46626333 (48)	RIVET OUP SHOULDER
42.	46631185 (48)	HEADER MNT BRKT R/H
43.	46631186 (48)	HEADER MNT BRKT L/H
44.	46631189 (48)	HEADER MNT GARNISH R/H
45.	46631190 (48)	HEADER MNT GARNISH L/H
46.	46631215 (48)	CONNECT LINK
47.	46631361 (48)	STRIKER TOPSTACK LOCK R/H
48.	46631362 (48)	STRIKER TOPSTACK LOCK L/H
49.	46626291 (48)	INNER SIDE RAIL HINGE R/H
50.	46626290 (48)	INNER SIDE RAIL HINGE L/H
51.	46626325 (48)	OUTER SIDE RAIL HINGE R/H



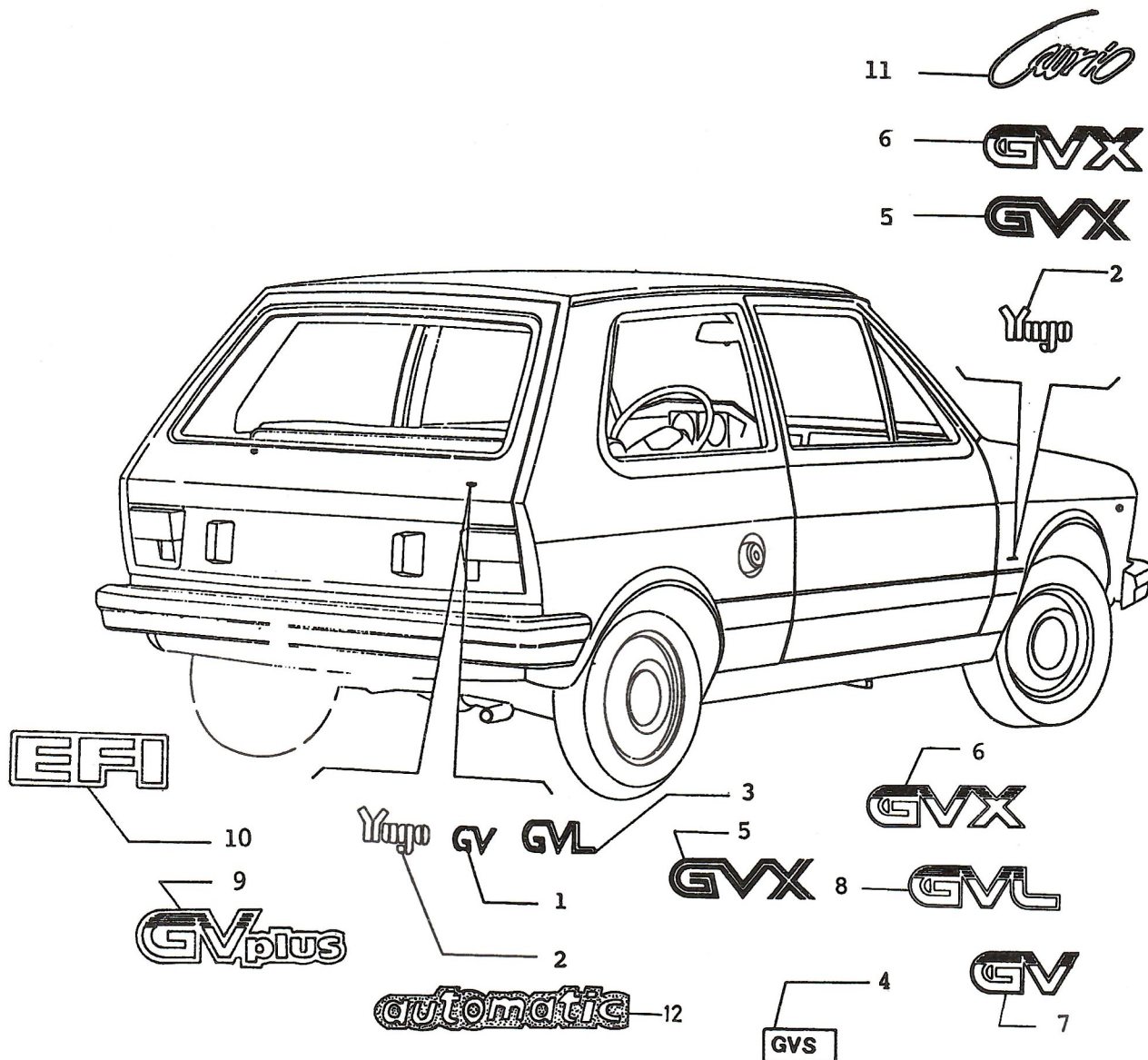
1.	46620855	SHIELD - STONE (SPOILER)
	46620795	SHIELD - STONE (SPOILER)
2.	4112977	SCREW
3.	15644001	SCREW
	15687207	SCREW
4.	1618553	WASHER
5.	14569087	SCREW
6.	46620279	EMBLEM - FRONT Y
7.	46621252	MOULDING - R/H FENDER
8.	46621253	MOULDING - L/H FENDER
9.	46621254	MOULDING - R/H DOOR
10.	46621255	MOULDING - L/H DOOR
11.	46621256	MOULDING - R/H QUARTER
12.	46621257	MOULDING - L/H QUARTER
13.	46620494	MOULDING - ROOF R/H
14.	46620495	MOULDING - ROOF L/H



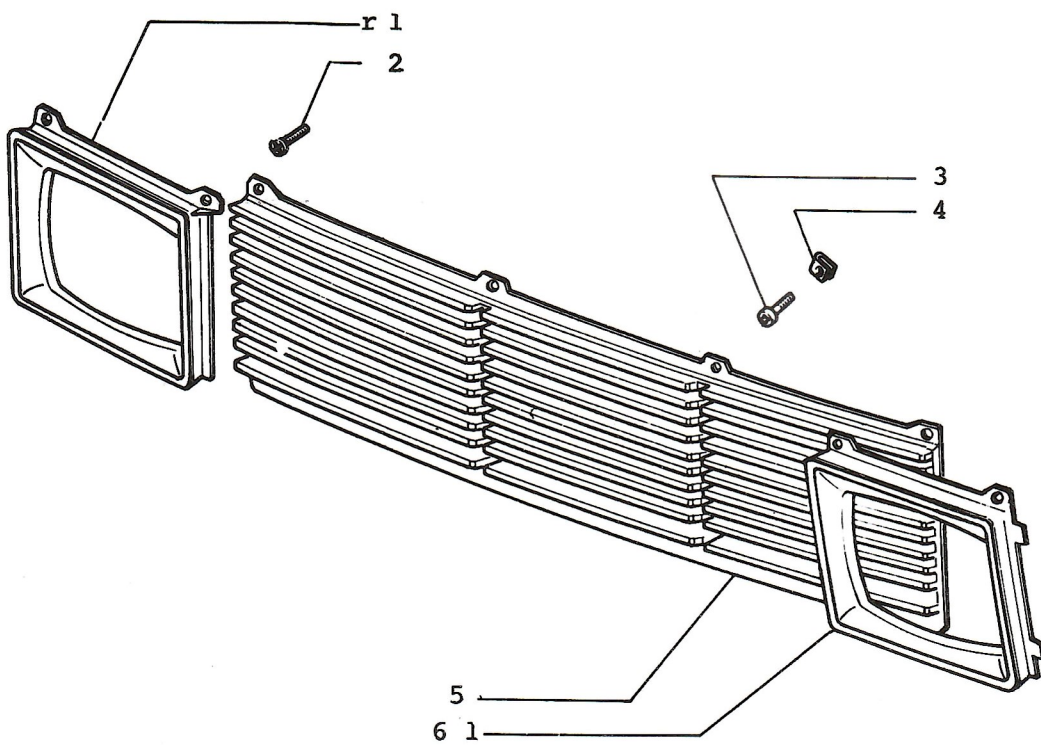
- | | | |
|----|---------------|------------------------------|
| 1. | 46623473 (31) | SCREW - SHOULDER WASHER HEAD |
| 2. | 46623274 (31) | FASCIA FRONT |
| 3. | 46624818 (31) | BLIND EXPANSION RIVET |
| 4. | 46623435 (31) | EMBLEM GVX |
| 5. | 46625545 (31) | EMBLEM GVX |



- | | | |
|-----|---------------|------------------------------|
| 1. | 46624721 (31) | PANEL ROCKER FRONT R/H |
| 2. | 46624720 (31) | PANEL ROCKER FRONT L/H |
| 3. | 46623455 (31) | APPLIQUE DOOR R/H |
| 4. | 46623454 (31) | APPLIQUE DOOR L/H |
| 5. | 46624818 (31) | PLASTIC RIVET |
| 6. | 46622471 (31) | TAPE STRIPE ROCKER FRT RIGHT |
| 7. | 46622470 (31) | TAPE STRIPE ROCKER FRT LEFT |
| 8. | 46624831 (31) | TAPE STRIPE, DOOR |
| 9. | 46625226 (31) | FASTENER |
| 10. | 46624836 (31) | TAPE STRIPE ROCKER RR LEFT |
| 11. | 46624835 (31) | TAPE STRIPE ROCKER RR RIGHT |
| 12. | 46623457 (31) | PANEL ROCKER R/H |
| 13. | 46623456 (31) | PANEL ROCKER L/H |
| 14. | 46624932 (31) | CLIP - LOWER DOOR APLIQUE |
| | 46626867 (31) | CLIP - LOWER DOOR APLIQUE |
| 15. | 46623309 (31) | BAR - BUMPER REAR |
| 16. | 46625980 (31) | PLASTIC RIVET |
| 17. | 46623473 (31) | SCREW - SHOULDER WASHER HEAD |
| 18. | 46620494 | MOULDING - ROOF R/H |
| 19. | 46620495 | MOULDING - ROOF L/H |
| 20. | 46624838 (31) | PLASTIC RIVET |



1.	46620167	EMBLEM - GV
2.	46620166	EMBLEM - YUGO
	46624698	EMBLEM - YUGO (GRAY METALLIC)
	46626361 (48)	EMBLEM - YUGO (RED)
3.	46624008	EMBLEM - GVL
4.	46625344	EMBLEM - GVS
5.	46621224 (31)	EMBLEM - GVX
6.	46625503 (31)	EMBLEM - GVX
7.	46625501	EMBLEM - GV
8.	46625502	EMBLEM - GVL
9.	46631126 (58,50)	EMBLEM - GV PLUS
10.	46631282 (58)	EMBLEM - EFI
	46631945 (58)	EMBLEM - EFI
11.	46626682 (48)	EMBLEM - CABRIO (RED)
	46626683 (48)	EMBLEM - CABRIO (GRAY METALLIC)
12.	46634220 (50)	EMBLEM - AUTOMATIC



FRONT RADIATOR GRILLE

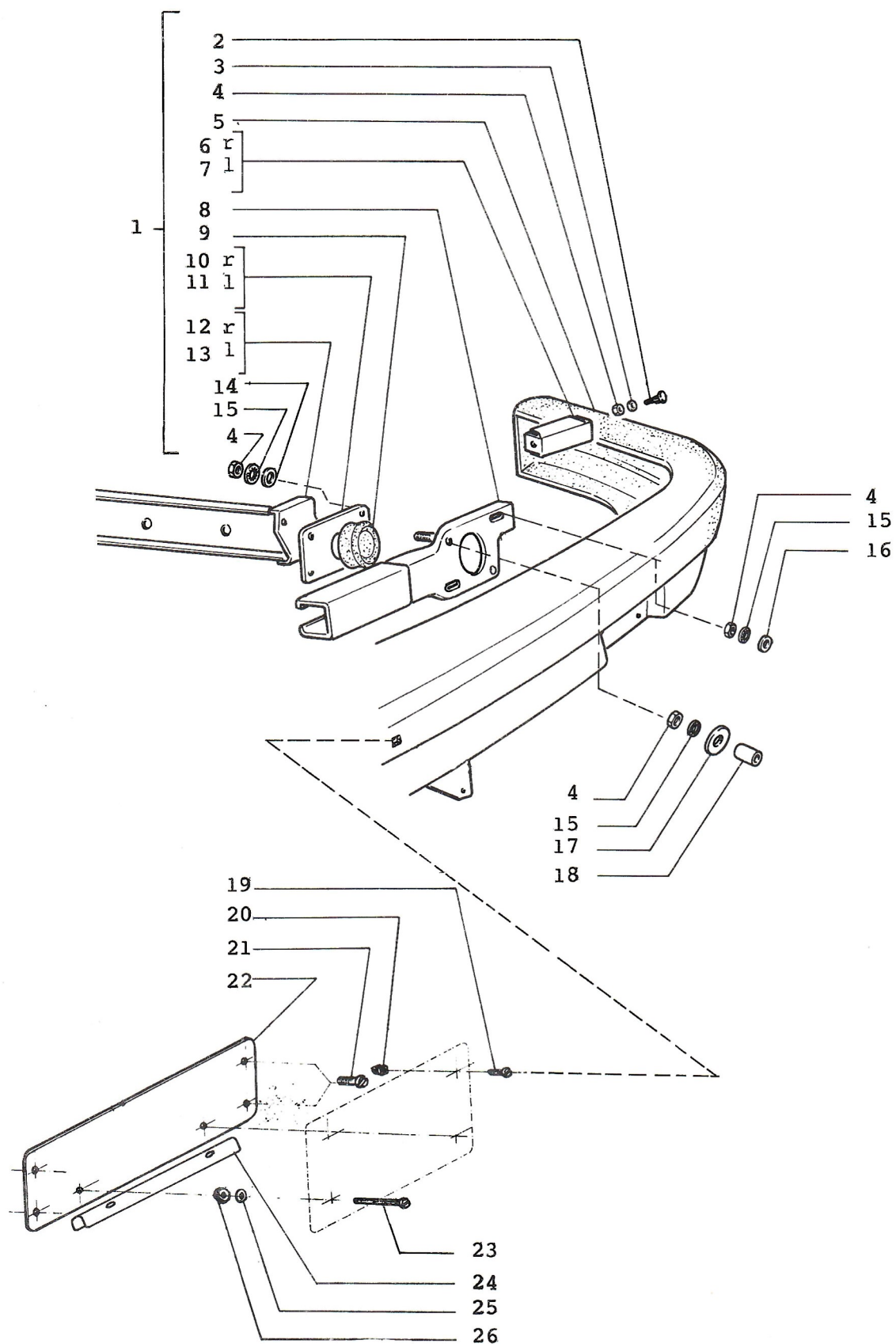
73,01

JULY 1991.

FRONT RADIATOR GRILLE

73.01

- | | | |
|----|----------|-----------------------------------|
| 1. | 46620169 | BEZEL - HEADLAMP R/H (BLACK) |
| | 46627139 | BEZEL - HEADLAMP R/H (WHITE) |
| 2. | 15685507 | SCREW |
| | 15903307 | SCREW (M8x22) |
| 3. | 15688107 | SCREW (M8x16) |
| 4. | 14188480 | CLIP |
| 5. | 1617564 | GRILLE - FRONT / RADIATOR (BLACK) |
| | 46627056 | GRILLE - FRONT / RADIATOR (WHITE) |
| 6. | 46620170 | BEZEL - HEADLAMP L/H (BLACK) |
| | 46627140 | BEZEL - HEADLAMP L/H (WHITE) |



FRONT BUMPER ASSEMBLY

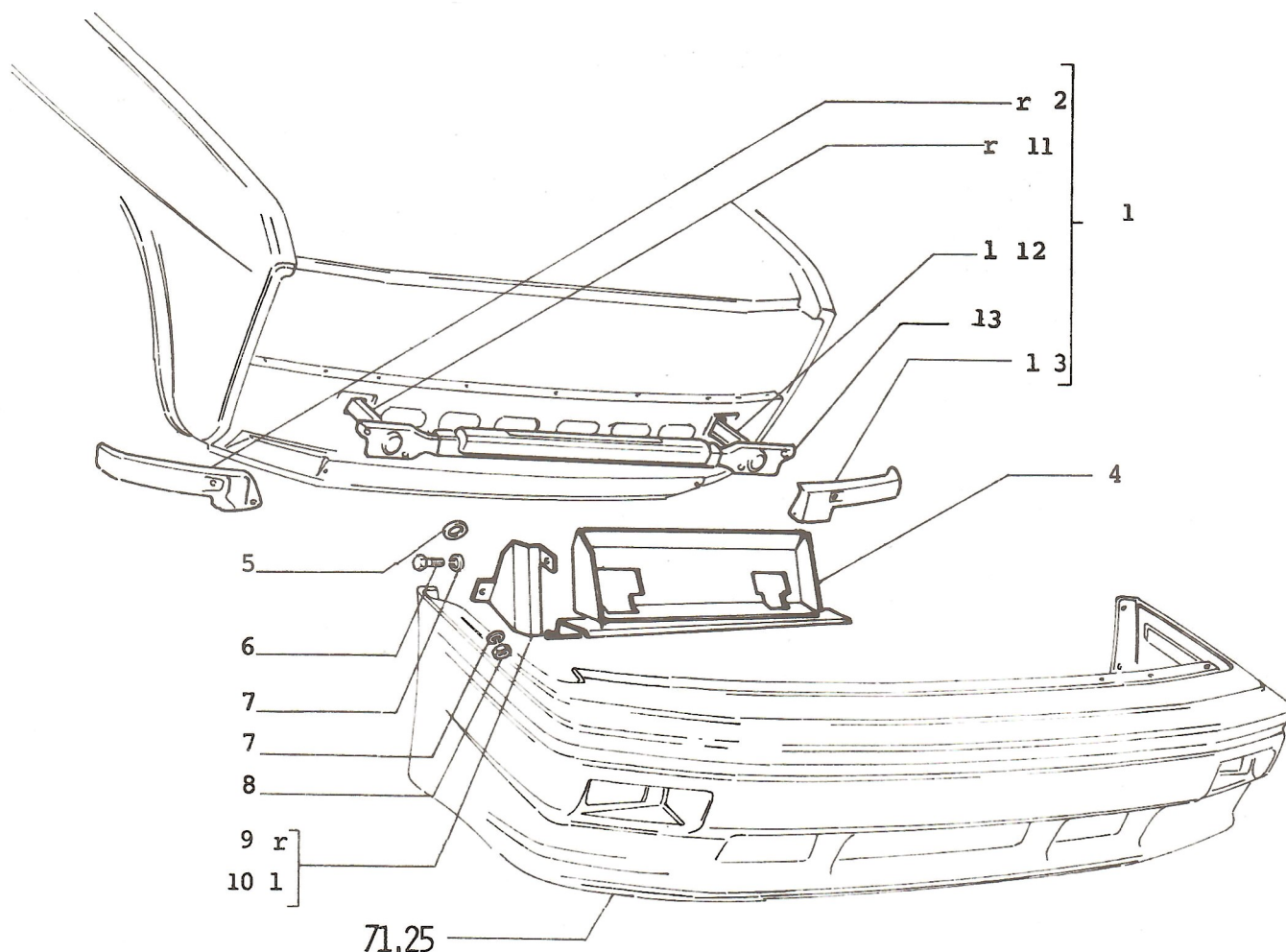
73,06

JULY 1989.

FRONT BUMPER ASSEMBLY

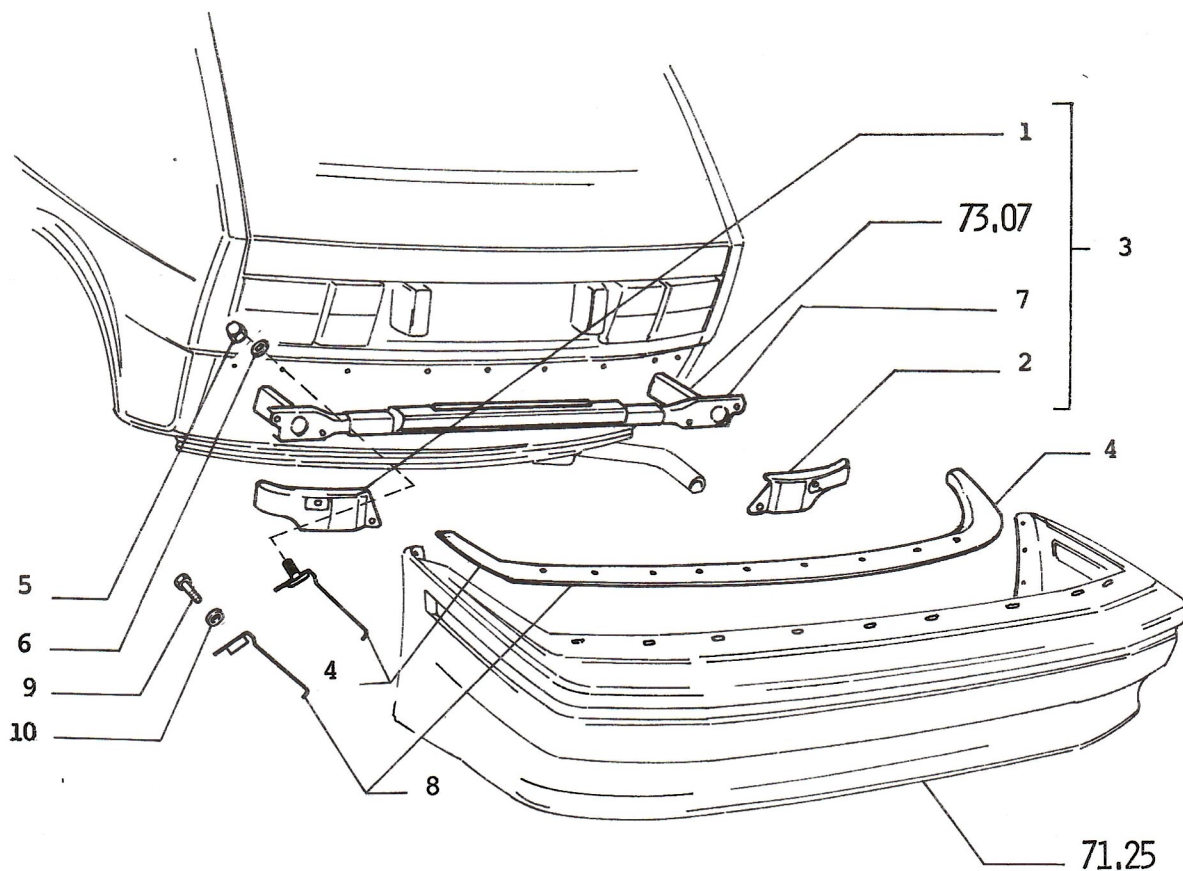
73.06

1.	46620297	BAR - FRONT BUMPER (COMPLETE)
	91703691 (27,22)	BAR - FRONT BUMPER (COMPLETE-RED TAPE)
	46626408 (58)	BAR - FRONT BUMPER (COMPLETE)
2.	46620317	SCREW
3.	10615611	WASHER
4.	16100811	NUT
5.	46620298	BAR - BUMPER
	1469643 (27)	BAR - BUMPER
	1469658 (27)	BAR - BUMPER
	1644273 (58)	BAR - BUMPER
6.	46620304	BRACKET R/H
7.	46620305	BRACKET L/H
8.	46620303	REINFORCEMENT
	1643844	REINFORCEMENT
9.	4439374	PAD
10.	4439367	PLATE R/H
11.	4439368	PLATE L/H
12.	46620309	SUPPORT - R/H
13.	46620310	SUPPORT - L/H
14.	12647201	WASHER
15.	10615671	WASHER
16.	10519601	WASHER
17.	12647001	WASHER
18.	4439353	SPACER
19.	15687907	SCREW
20.	46620395	PLUG - L/PLATE SCREW
21.	15644007	SCREW
22.	46620182	FRONT LICENSE PLATE BRKT
	46621572	FRONT LICENSE PLATE BRKT
23.	13274817	SCREW - FRONT LICENSE PLATE
	15903407	SCREW - FRONT LICENSE PLATE
	15903307	SCREW - FRONT LICENSE PLATE (M 8 x 22)
24.	46620199	PAD
	46621573	PAD
25.	15896417	NUT
26.	10519307	WASHER

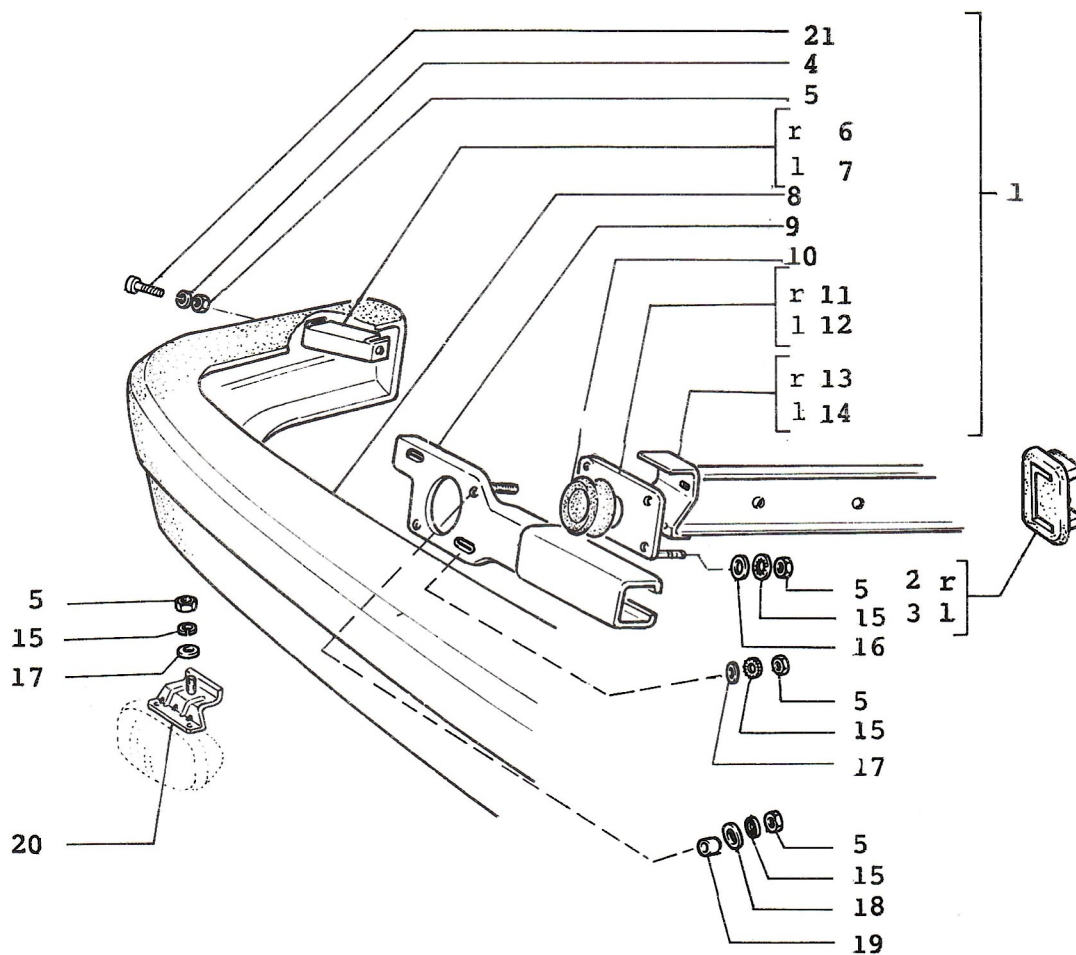


- | | | |
|-----|---------------|-------------------------------|
| 1. | 46623291 (31) | SUPPORT - BUMPER - FRONT (*1) |
| | 46627080 (31) | SUPPORT - BUMPER - FRONT |
| 2. | 46622942 (31) | CORNER BRACKET R/H |
| 3. | 46622943 (31) | CORNER BRACKET L/H |
| 4. | 46623827 (31) | AIR DEFLEKTOR PANEL |
| 5. | 46623299 (31) | WASHER |
| 6. | 16043121 (31) | SCREW |
| 7. | 10615679 (31) | WASHER |
| 8. | 16100817 (31) | NUT |
| 9. | 46623297 (31) | VERTICAL SUPPORT BRACKET R/H |
| 10. | 46623298 (31) | VERTICAL SUPPORT BRACKET L/H |
| 11. | 46623289 (31) | SUPPORT R/H |
| 12. | 46623290 (31) | SUPPORT L/H |
| 13. | 1643846 (31) | REINFORCEMENT |

NOTE 1: CANCELED FOR MODEL (31)



- | | | |
|-----|---------------|-----------------------------|
| 1. | 46622947 (31) | CORNER BRACKET L/H |
| 2. | 46622946 (31) | CORNER BRACKET R/H |
| 3. | 46623308 (31) | BAR - REAR BUMPER |
| 4. | 46625496 (31) | REINFORCEMENT - REAR BUMPER |
| 5. | 14054517 (31) | NUT |
| 6. | 12644410 (31) | WASHER |
| 7. | 1643847 (31) | REINFORCEMENT |
| 8. | 46626886 (31) | REINFORCEMENT - REAR BUMPER |
| 9. | 14778414 (31) | SCREW M6 X 20 |
| 10. | 46626511 (31) | WASHER |



REAR BUMPER ASSEMBLY

73.07/1

JULY 1989.

REAR BUMPER ASSEMBLY

73.07/1

1.	46620300	BAR - REAR BUMPER (COMPLETE)
	46623608 (27)	BAR - REAR BUMPER (COMPLETE - RED TAPE)
	46626409 (58)	BAR - REAR BUMPER (COMPLETE)
2.	4439375	PAD R/H
3.	4439376	PAD L/H
4.	10615611	WASHER
	10615679	WASHER
5.	16100811	NUT
	16100817	NUT
6.	46620304	BRACKET R/H
7.	46620305	BRACKET L/H
8.	46620301	BAR - BUMPER REAR
	1469610 (27)	BAR - BUMPER REAR
	1469660 (27)	BAR - BUMPER REAR
	1644275 (58)	BAR - BUMPER REAR
9.	46620308	REINFORCEMENT
	1643845	REINFORCEMENT
10.	4439374	PAD
11.	4439367	PLATE R/H
12.	4439368	PLATE L/H
13.	46620309	SUPPORT L/H
14.	46620310	SUPPORT R/H
15.	10615671	WASHER
	10615679	WASHER
16.	12647201	WASHER
	12647207	WASHER
17.	10519601	WASHER
	10519607	WASHER
18.	12647001	WASHER
	12647007	WASHER
19.	4439353	CASING
20.	4469446	SUPPORT
21.	46620317	SCREW