

# ENGINE IGNITION SYSTEM

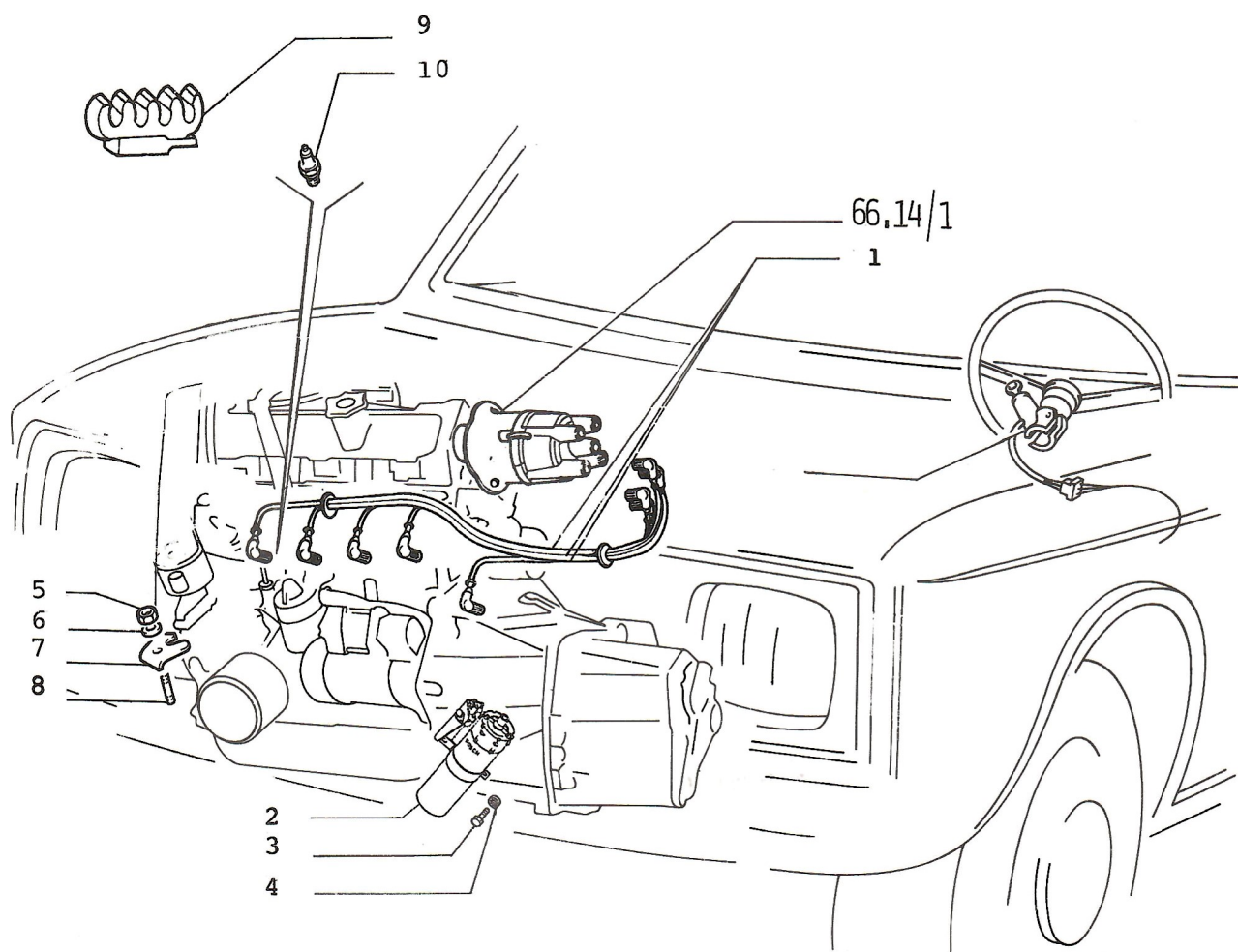
61.01

1.	46620555	DISTRIBUTOR - IGNITION
	46623036 (27)	DISTRIBUTOR - IGNITION
2.	12056885	CAP
3.	4267819	BUMPER (*1)
4.	1450546	CABLE ASSY
	46623831 (27)	CABLE ASSY
5.	4129417	RUBBER RING (*1)
6.	12056985	CAP
7.	16100811	NUT
8.	11198070	WASHER
9.	4214151	BRACKET - IGNITION DISTRIBUTOR
10.	13517021	STUD - IGNITION DISTRIBUTOR
11.	4109133	GASKET - IGNITION DISTRIBUTOR
12.	12056285	BOOT - IGNITION COIL WIRE
13.	46620552	GASKET
14.	46620553	MODULE
15.	46620844	MODULE - IGNITION
16.	46620185	PLUG - SPARK (BOSNA) (*3)
	4346796	PLUG - SPARK (SHAMPION) (*3)
	46622699	PLUG - SPARK (BOSNA FE 65 CPR) (*3)
	46623072 (27)	PLUG - SPARK (SHAMPION) (*3)
	46623071 (27)	PLUG - SPARK (BOSNA FE 55 CPR) (*3)
	46641339 (27)	PLUG - SPARK (BOSNA FE 65 CPR SUPER A) (*3)
	46641987 (58)	PLUG - SPARK (BOSCH WR8DC)
17.	15896411	NUT
18.	11195470	WASHER
19.	10519301	WASHER
20.	15896211	NUT
21.	12605377	WASHER
22.	12644401	WASHER
23.	46620551	COIL - IGNITION
24.	12605171	WASHER
25.	13272401	SCREW
26.	46621144	SWITCH - IGNITION (FAJ)
	46620849	SWITCH - IGNITION (SIPEA NEIMAN)
	46624935	SWITCH - IGNITION (SIPEA NEIMAN) (*2)
	46624936	SWITCH - IGNITION (FAJ) (*2)
27.	46600332	KEY IN SWITCH - IGNITION
28.	46623361	CLIP
	46624263	CLIP

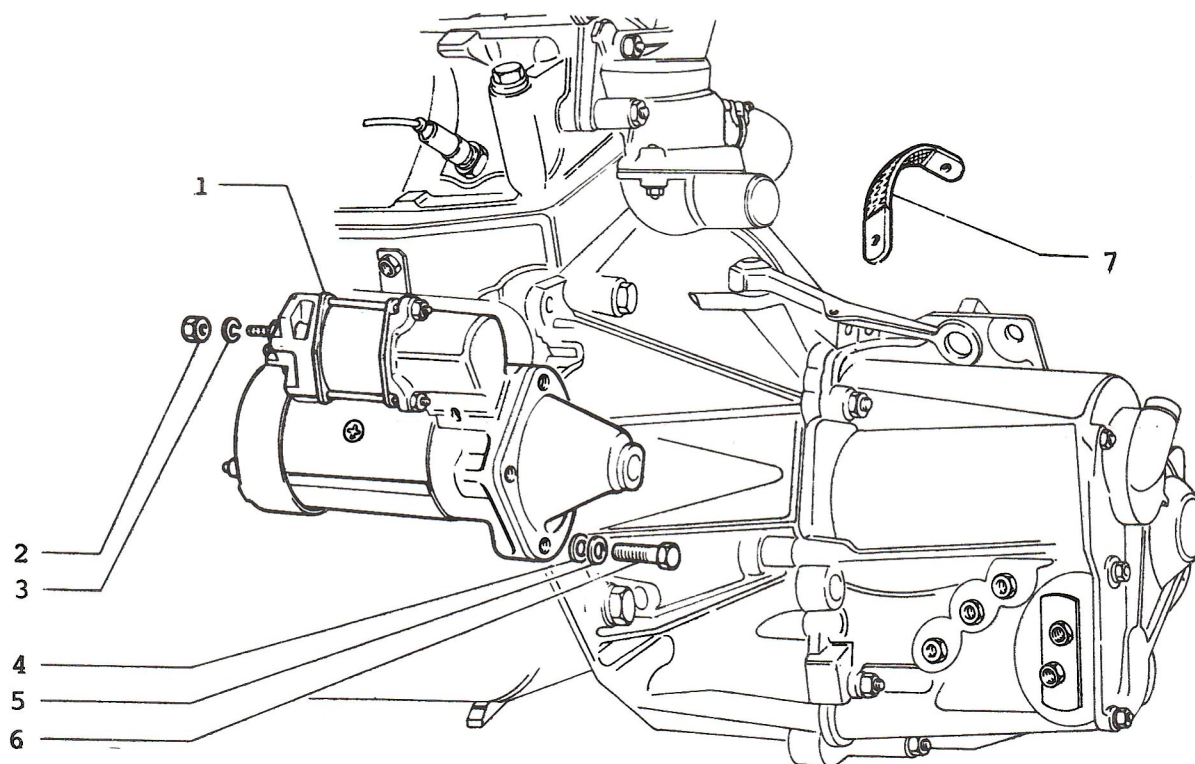
NOTE 1: CANCELED FOR MODEL 87

NOTE 2: 2 ND TYPE USED FROM CAR No 13127 VIN 431785  
2 ND TYPE USED FROM CAR No 13067 VIN 431665  
FOR MODEL (31) (03.18.1988.)

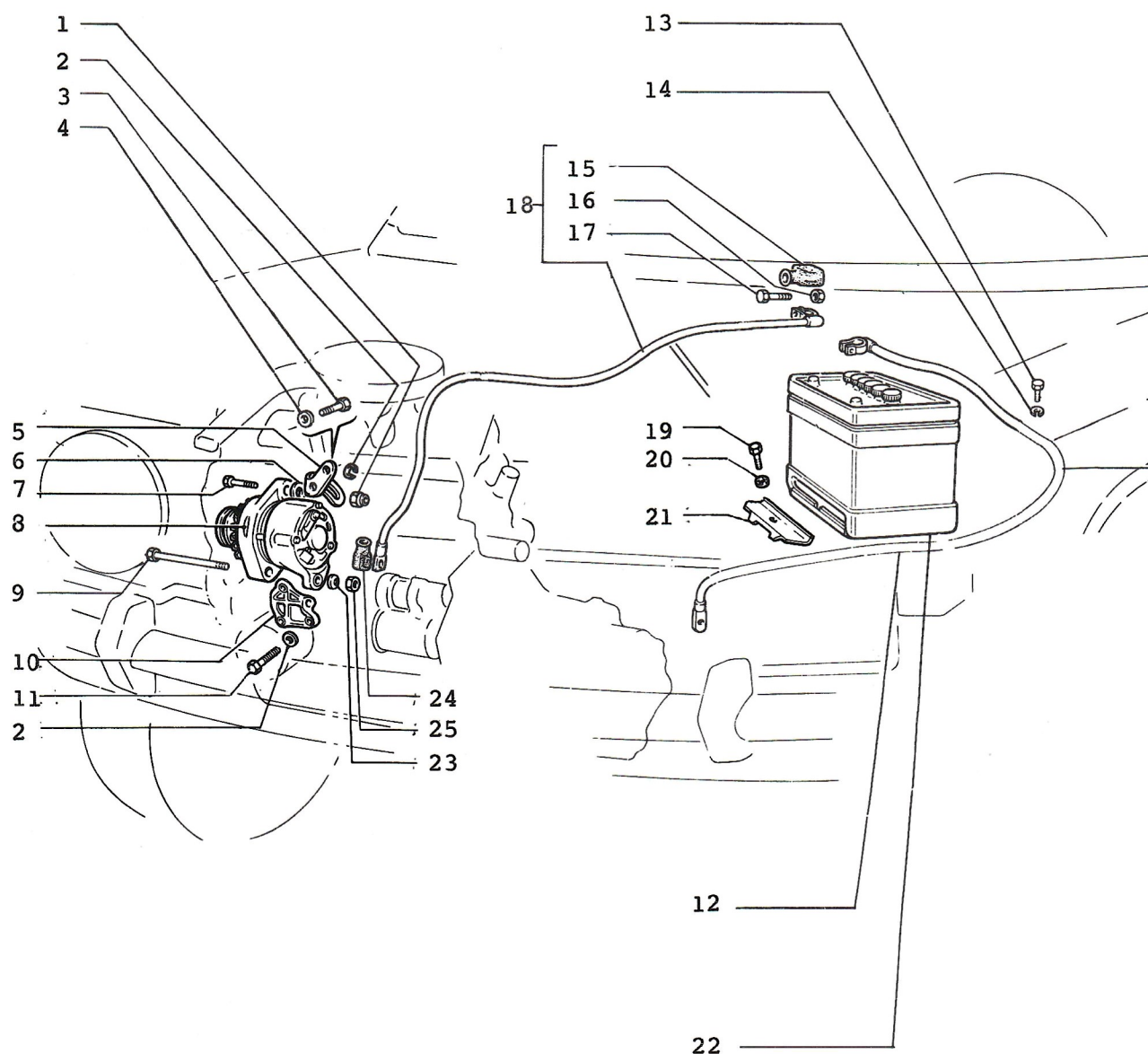
NOTE 3: CANCELLED ITEM



- |     |               |  |
|-----|---------------|--|
| 1.  | 46641923 (58) | CABLE ASSY                             |
|     | 46632407 (58) | CABLE ASSY (BOSCH)                     |
| 2.  | 46627985 (58) | COIL - IGNITION                        |
| 3.  | 14287811 (58) | SCREW M 5 x 16                         |
| 4.  | 12599171 (58) | LOCKWASHER                             |
| 5.  | 16100811      | NUT                                    |
| 6.  | 11198070      | WASHER                                 |
| 7.  | 4214151       | BRACKET                                |
| 8.  | 13517021      | STUD                                   |
| 9.  | 46641653 (58) | CLIP                                   |
| 10. | 46623072      | PLUG - SPARK (CHAMPION M 14-19 RNYC-4) |
|     | 46641339      | PLUG - SPARK (BOSNA FE65CPR SUPER A)   |
|     | 46641987      | PLUG - SPARK (BOSCH WR8DC)             |



- |    |               |                                  |
|----|---------------|----------------------------------|
| 1. | 46629781      | MOTOR - STARTER (ISKRA)          |
|    | 46621390      | MOTOR - STARTER Ø 84,5 (ISKRA)   |
|    | 1616404       | MOTOR - STARTER Ø 93 (R.ČAJAVEC) |
|    | 46634235 (50) | MOTOR - STARTER (ISKRA-AZE 1510) |
| 2. | 16100811      | NUT                              |
| 3. | 10516670      | WASHER - LOCK                    |
| 4. | 10519601      | WASHER                           |
| 5. | 11198070      | WASHER                           |
| 6. | 16044221      | BOLT - STARTER MOTOR             |
| 7. | 4269585       | CABLE - BATTERY GROUND           |

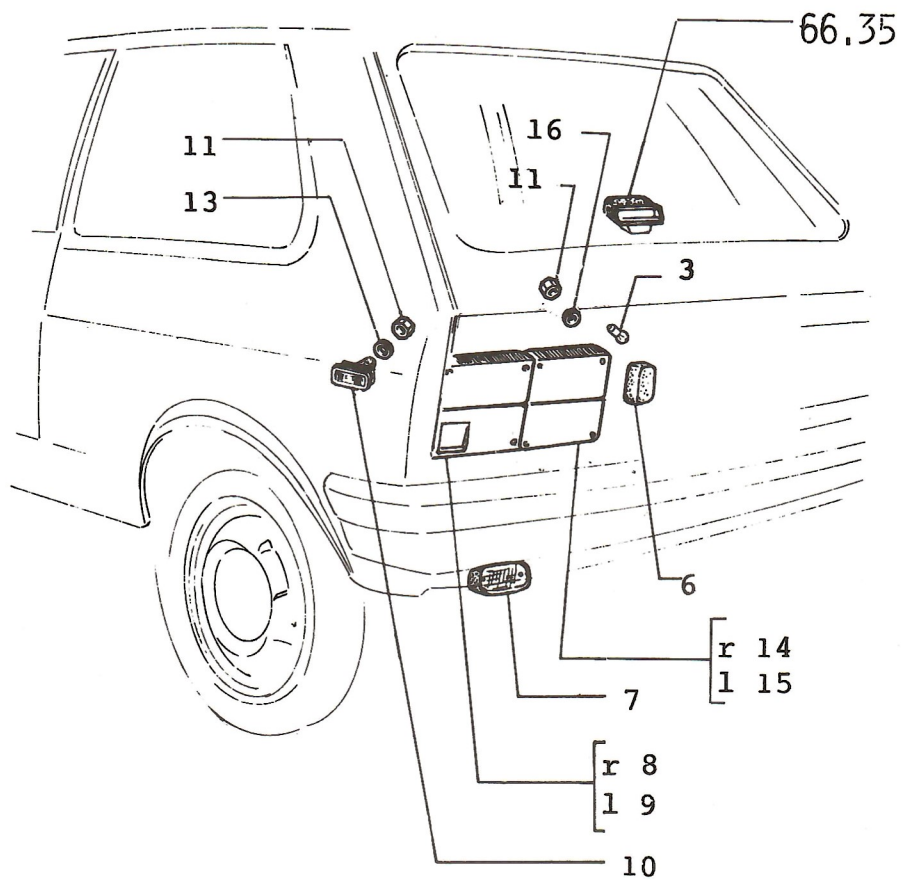
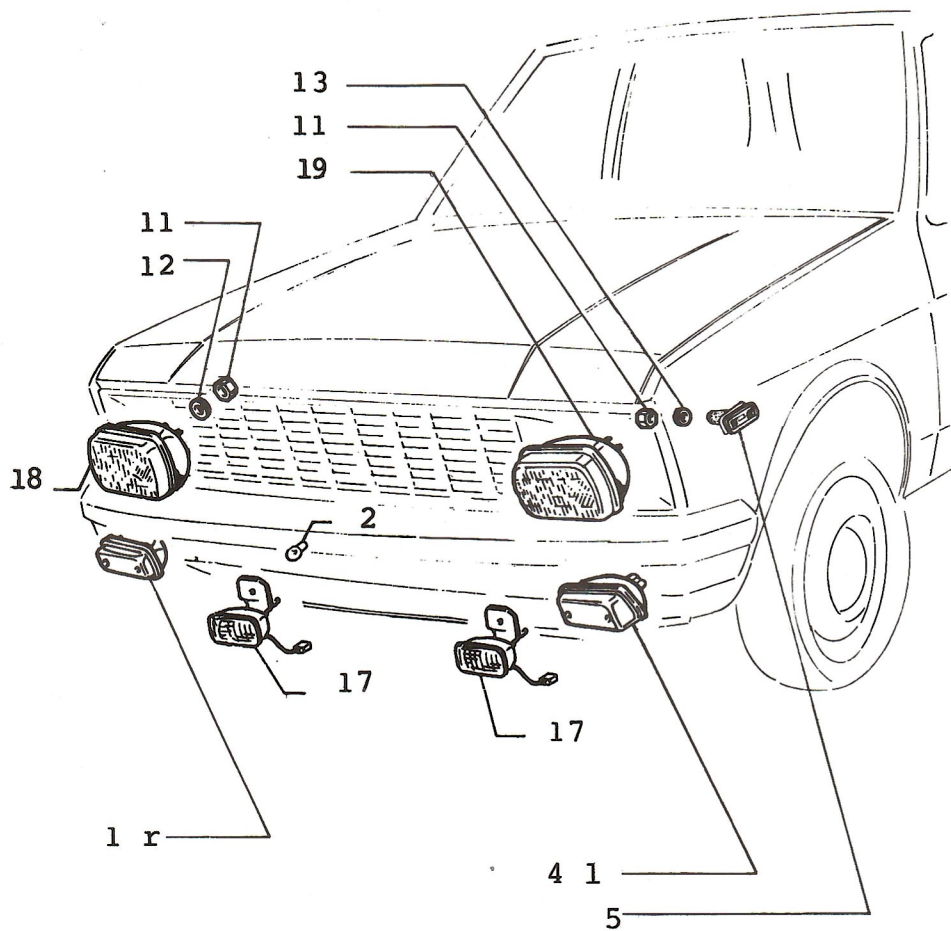


# ALTERNATOR AND CHARGING SYSTEM

63.01

1.	14048711	NUT
2.	10516870	WASHER - LOCK
3.	16043411	SCREW (M8x25)
4.	11198170	LOCKWASHER
5.	4224378	BRACKET
6.	4140833	WASHER
7.	11307021	SCREW (M10x40)
8.	46620183	ALTERNATOR (AAK 1163 14V 55A)
	46641386	ALTERNATOR (AAK 1172 14V 55A) (*1)
	46624644 (31)	ALTERNATOR (AAK 1164 14V 65A)
	46641387 (31)	ALTERNATOR (AAK 1173 14V 65A)
9.	15972221	SCREW (M10x120)
10.	46620391	BRACKET
11.	15970821	SCREW (M10x32)
12.	4385778	CABLE - BATTERY
13.	16043421	SCREW
14.	10516677	WASHER - LOCK
15.	4062070	BOOT - BATTERY TERMINAL
16.	15896218	NUT - BATTERY TERMINAL
17.	11945008	SCREW - BATTERY CABLE
18.	1617860	CABLE - BATTERY
	46622316	CABLE - BATTERY
	46623551 (27)	CABLE - BATTERY
	46626930 (27)	CABLE - BATTERY (BLACK)
19.	16135911	SCREW
20.	12605570	WASHER
21.	4239011	BRACKET - BATTERY
22.	46621750	BATTERY (TREPČA)
	46620189	BATTERY (TESLA)
	46630758 (58)	BATTERY (TREPČA)
	46630756 (58)	BATTERY (TESLA)
23.	11198370	WASHER
24.	4400648	BOOT
25.	12164711	NUT

NOTE 1: 1 ND TYPE USED FROM ENGINE No 1092440, CAR No 47658  
 PART NBR. 46620183 AND PART NBR. 46641386 ARE  
 INTERCHANGEABLE



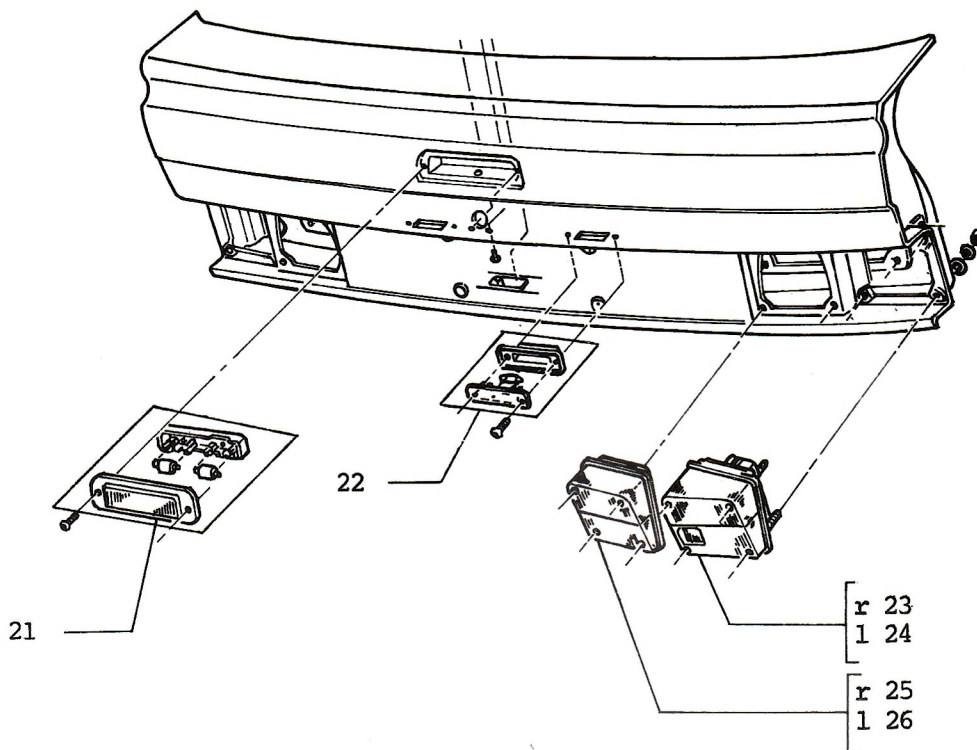
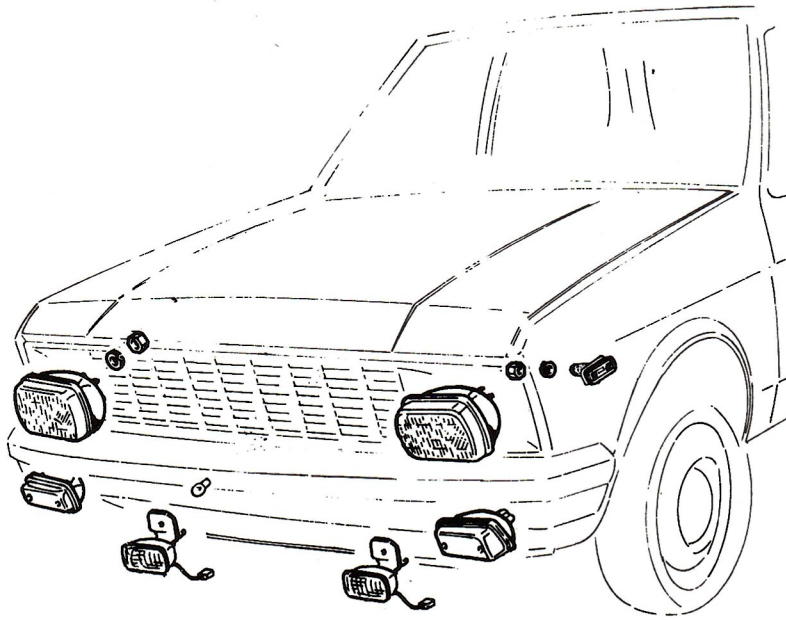
# OUTER LIGHTING

64.01/1

1. 46620697 LAMP - FRONT PARKING R/H
- 46625541 LAMP - FRONT PARKING R/H (\*1)
2. 14151590 (31) BULB/LAMP - FOG
3. 10857790 BULB/LICENSE PLATE
4. 46620698 LAMP - FRONT PARKING L/H
- 46625542 LAMP - FRONT PARKING L/H (\*1)
5. 1619981 LAMP - SIDE MARKER
- 46625543 LAMP - SIDE MARKER (\*1)
6. 46620207 LAMP - LICENSE PLATE
- 4420827 LAMP - LICENSE PLATE
7. 4441908 LAMP - BACK UP
8. 4421876 LAMP - TAIL R/H
- 46627410 LAMP - TAIL R/H (\*1)
- 46630119 (58) LAMP - TAIL R/H
9. 4421877 LAMP - TAIL L/H
- 46627412 LAMP - TAIL L/H (\*1)
- 46630120 (58) LAMP - TAIL L/H
10. 1619983 LAMP - REAR SIDE MARKER
- 46626098 LAMP - REAR SIDE MARKER (\*1)
11. 15896411 NUT
12. 12599171 WASHER
13. 10615370 WASHER SIDE LAMP
14. 46621053 LAMP - BACK UP R/H
- 46624910 LAMP - BACK UP R/H (\*1)
- 46631389 (58) LAMP - BACK UP R/H
- 46629364 (58) LAMP - BACK UP R/H (\*2)
15. 46621054 LAMP - BACK UP L/H
- 46624911 LAMP - BACK UP L/H (\*1)
- 46631390 (58) LAMP - BACK UP L/H
- 46629365 (58) LAMP - BACK UP L/H (\*2)
16. 10615379 WASHER
17. 46623816 (31,48) LAMP - FOG
18. 46626879 (58) HEADLAMP R/H (21. OCTOBER)
19. 46626880 (58) HEADLAMP L/H (21. OCTOBER)

NOTE 1: 2 ND TYPE USED FROM CAR No 13127 VIN 431785  
 2 ND TYPE USED FROM CAR No 13067 VIN 431665 FOR MODEL (31)  
 (03.18.1988.)

NOTE 2: 2 ND TYPE USED FROM CAR No 1809 VIN 448339

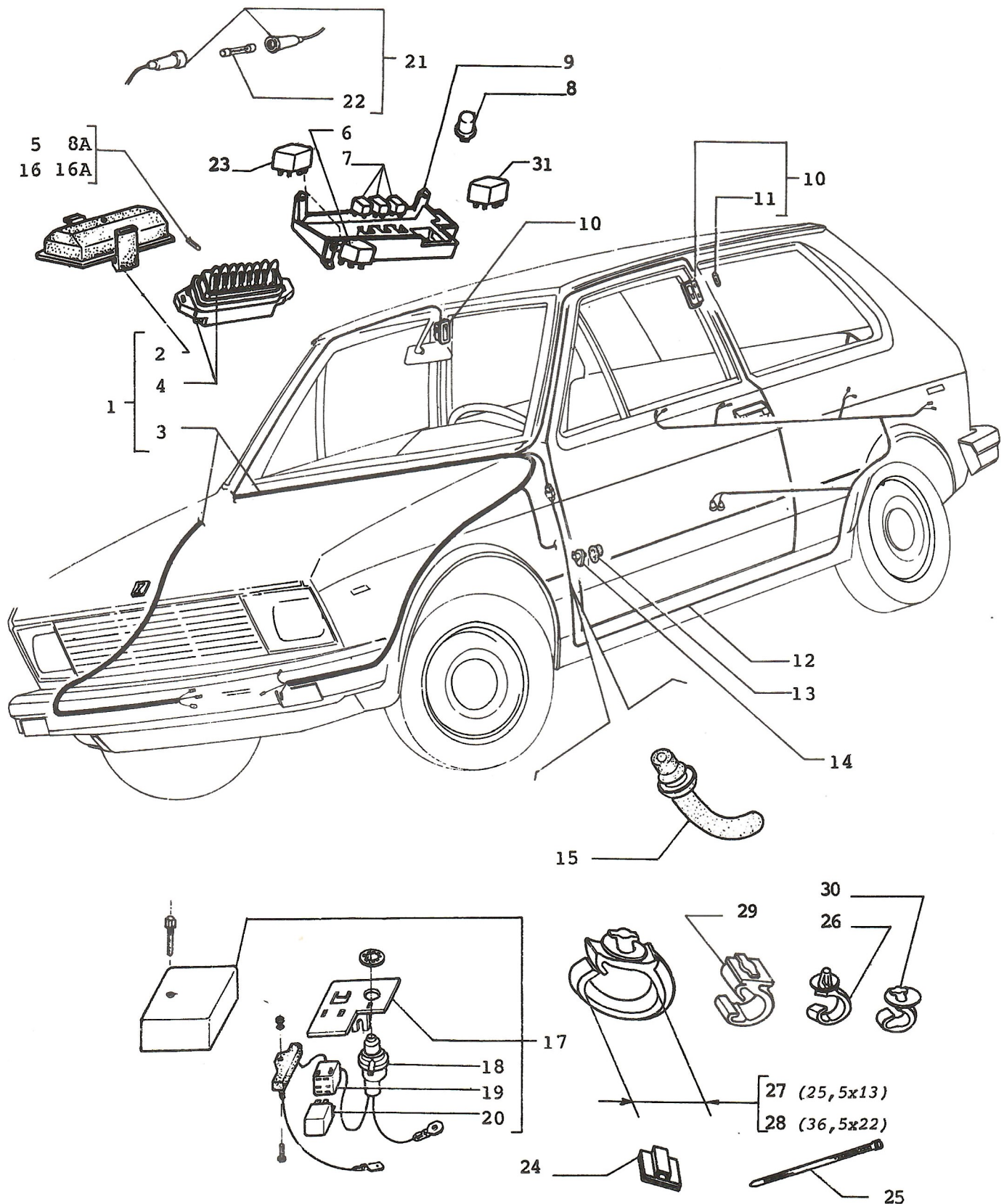


## OUTER LIGHTING

64.01/1

21.	46632386 (48)	HIGH - MTG STOP LIGHT ASSY
22.	46616225 (48)	LIGHT ASSY - LICENSE PLATE
23.	46630119 (48)	LIGHT ASSY - BRAKE R/H
24.	46630120 (48)	LIGHT ASSY - BRAKE L/H
25.	46631389 (48)	LIGHT ASSY - BACK UP/BRAKE R/H
	46629364 (48)	LIGHT ASSY - BACK UP/BRAKE R/H (*1)
26.	46631390 (48)	LIGHT ASSY - BACK UP BRAKE L/H
	46629365 (48)	LIGHT ASSY - BACK UP BRAKE L/H (*1)

NOTE 1: 2 ND TYPE USED FROM CAR No 1809 VIN 448339



## ELECTRICAL INSTALLATION

64.01/2

1. 46620002 HARNESS-ASSY (\*1)  
46621879 HARNESS-ASSY (\*2)  
46622590 (98) HARNESS-ASSY  
91703706 (27) HARNESS-ASSY (FOR 4340878 SWITCH 13.09) (\*3)  
46622995 (27) HARNESS-ASSY (FOR 46622892 SWITCH 14.09) (\*4)  
91704166 (27) HARNESS-ASSY (\*5)  
91704183 (27) HARNESS-ASSY (\*7)  
46624929 (27) HARNESS-ASSY (\*8)  
46625365 (22) HARNESS-ASSY  
46623231 (31) HARNESS-ASSY  
91704167 (31) HARNESS-ASSY (\*6)  
91704184 (31) HARNESS-ASSY (\*7)  
46624251 (31) HARNESS-ASSY (\*8)  
91704259 (11,47) HARNESS-ASSY (\*9)  
46627876 (11,47) HARNESS-ASSY (\*10)  
46630475 (48) HARNESS-ASSY  
46634272 (50) HARNESS-ASSY
2. 4343529 COVER/BOX - FUSE
3. 46620001 HARNESS - WIRE (\*1)  
46621878 HARNESS - WIRE (\*2)  
46622589 (98) HARNESS - WIRE  
46602231 (27) HARNESS - WIRE (FOR 4340878 SWITCH 14.09) (\*3)  
46622994 (27) HARNESS - WIRE (FOR 46622892 SWITCH 14.09) (\*4)  
46625364 (22) HARNESS - WIRE  
46623230 (31) HARNESS - WIRE  
46624250 (31) HARNESS - WIRE (\*8)  
46624928 (27) HARNESS - WIRE (\*8)  
46627875 (11,47) HARNESS - WIRE (\*10)  
46630474 (48) HARNESS - WIRE  
46634271 (50) HARNESS - WIRE

NOTE 1: 1 ST TYPE USED UP TO CAR No 31058

NOTE 2: 2 ND TYPE USED FROM CAR No 31059

NOTE 3: 1 ST TYPE USED UP TO CAR No 6338

NOTE 4: 2 ND TYPE USED FROM CAR No 6339 VIN 363899  
FOR ALL MODELS PRODUCED AFTER (02.16.1987.)

NOTE 5: 3 RD TYPE USED FROM CAR No 8650 VIN 426953 ITEMS 17, 18, 19  
AND 20 ARE CANCELLED IN CASE OF USE OF PART  
NBR. 91704166 - HARNESS ASSY (02.22.1988.)

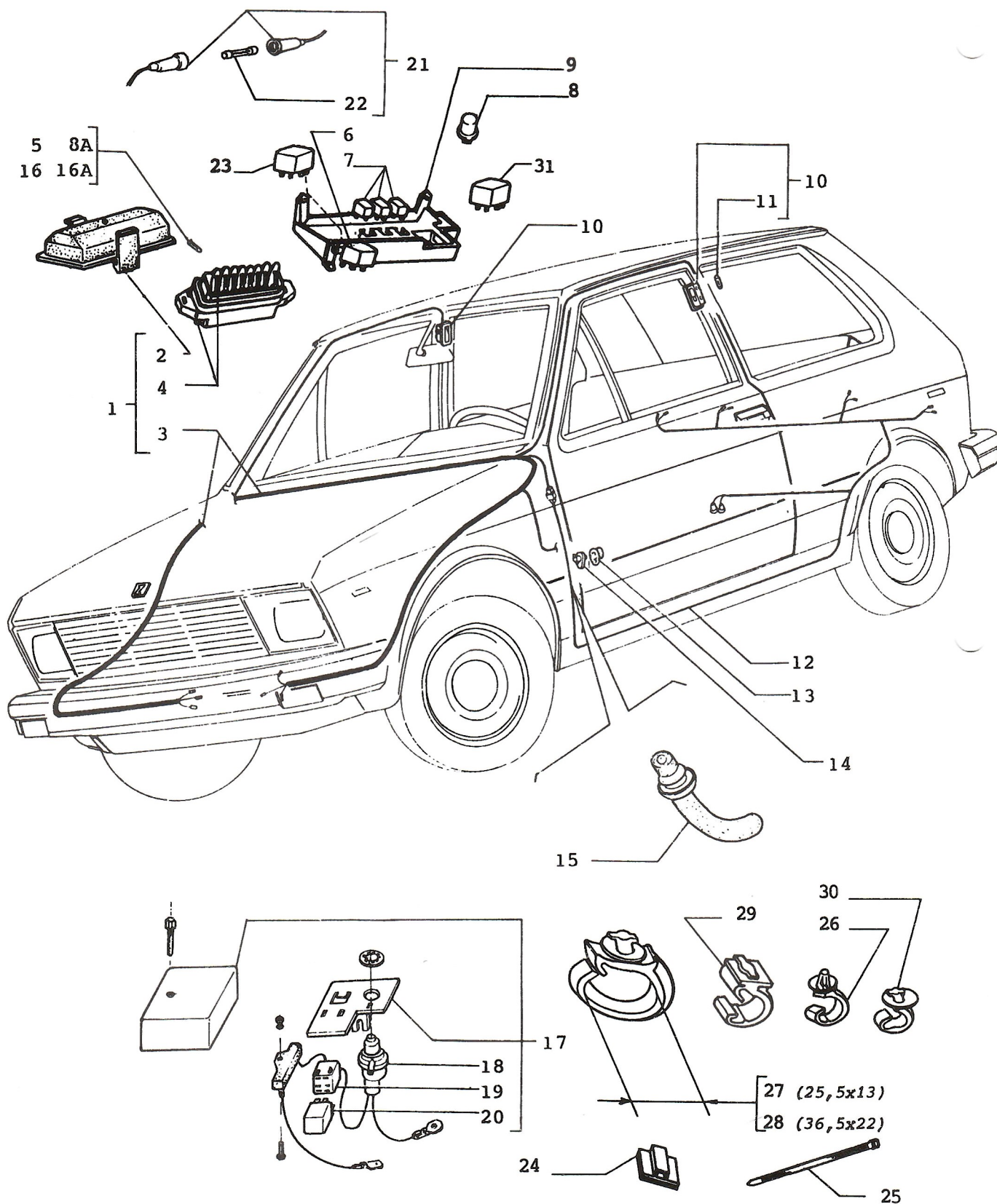
NOTE 6: 2 ND TYPE USED FROM CAR No 9680 VIN 428256 (02.26.1988.)

NOTE 7: 4 TH TYPE USED FROM CAR No 13127 VIN 431785 (03.18.1988.)  
3 RD TYPE USED FROM CAR No 13067 VIN 431665 FOR MODEL (31)  
(MATE-N-LOK CONNECTORS) (03.18.1988.)

NOTE 8: WITH ELECTRONIC RELAY AND MATE-N-LOK CONNECTORS  
(CANCELLED ITEM 1611489 AND 1612107, INTRODUCED ITEM 1615858)

NOTE 9: 1 ST TYPE USED FROM CAR No 17060 VIN 435883, ENGINE 1159236  
(04.27.1988.)

NOTE 10: 2 ND TYPE USED FROM CAR No 20731 VIN 439632 (06.02.1988.)



## ELECTRICAL INSTALLATION

64.01/2

4.	4343527	BOX - FUSE
5.	10858090	FUSE - 8 AMP
6.	1612107	RELAY - FLASHER (*8)
7.	1617220	RELAY
8.	1611489	RELAY - FLASHER (*8)
9.	4426874	SUPPORT
	46625697 (31)	SUPPORT
10.	1610532	LAMP - INTERIOR
11.	10853090	BULB - INTERIOR LAMP
12.	46620003	HARNESS - WIRE RR (*1)
	46621880	HARNESS - WIRE RR (*2)
	91703521 (98,42)	HARNESS - WIRE RR
	46626505 (42)	HARNESS - WIRE RR (*7)
	46622482 (27,31)	HARNESS - WIRE RR
	46624252 (27,31)	HARNESS - WIRE RR (*7)
	46625366 (22)	HARNESS - WIRE RR
	46628152 (11)	HARNESS - WIRE RR (*9)
	46627916 (47)	HARNESS - WIRE RR (*9)
	46630476 (48)	HARNESS - WIRE RR
	46634273 (50)	HARNESS - WIRE RR
13.	1618200	BOOT - DOOR JAM SWITCH
14.	1618199	SWITCH - DOOR JAM BUTTON
15.	46620620	SLEEVE - DOOR JAM
16.	11048990	FUSE - 16 AMP
17.	46620951	ELEMENT
	46621840	ELEMENT
	46622493	ELEMENT (*5)
18.	46620915	VACUUM - SWITCH (*5)
19.	12276080	BLOCK (*5)
20.	1611962	RELAY (*5)
21.	46622636 (98)	SUPPORT - FUSE 0,5 (EI)
	46623316 (98)	SUPPORT - FUSE 0,5 (STANDARD)
22.	46622657 (98)	FUSE 0,5
23.	1614192 (31)	RELAY - REAR FOG
24.	46626716	CLAMP - SELFADHESIVE
25.	46626717	CLIP
	14560180 (50)	CLIP
26.	14573380	CLIP
27.	14572280	CLIP (25,5 x 13)
28.	14572880	CLIP (36,5 x 22)
29.	14570680	CLIP
30.	14572586	CLIP
31.	1615858	RELAY - ELECTRONIC (R.ČAJAVEC) (*8)
	46625242	RELAY - ELECTRONIC (EI) (*8)
32.	14572680 (58)	CLIP 128,5 x 16

NOTE 1: 1 ST TYPE USED UP TO CAR No 31058

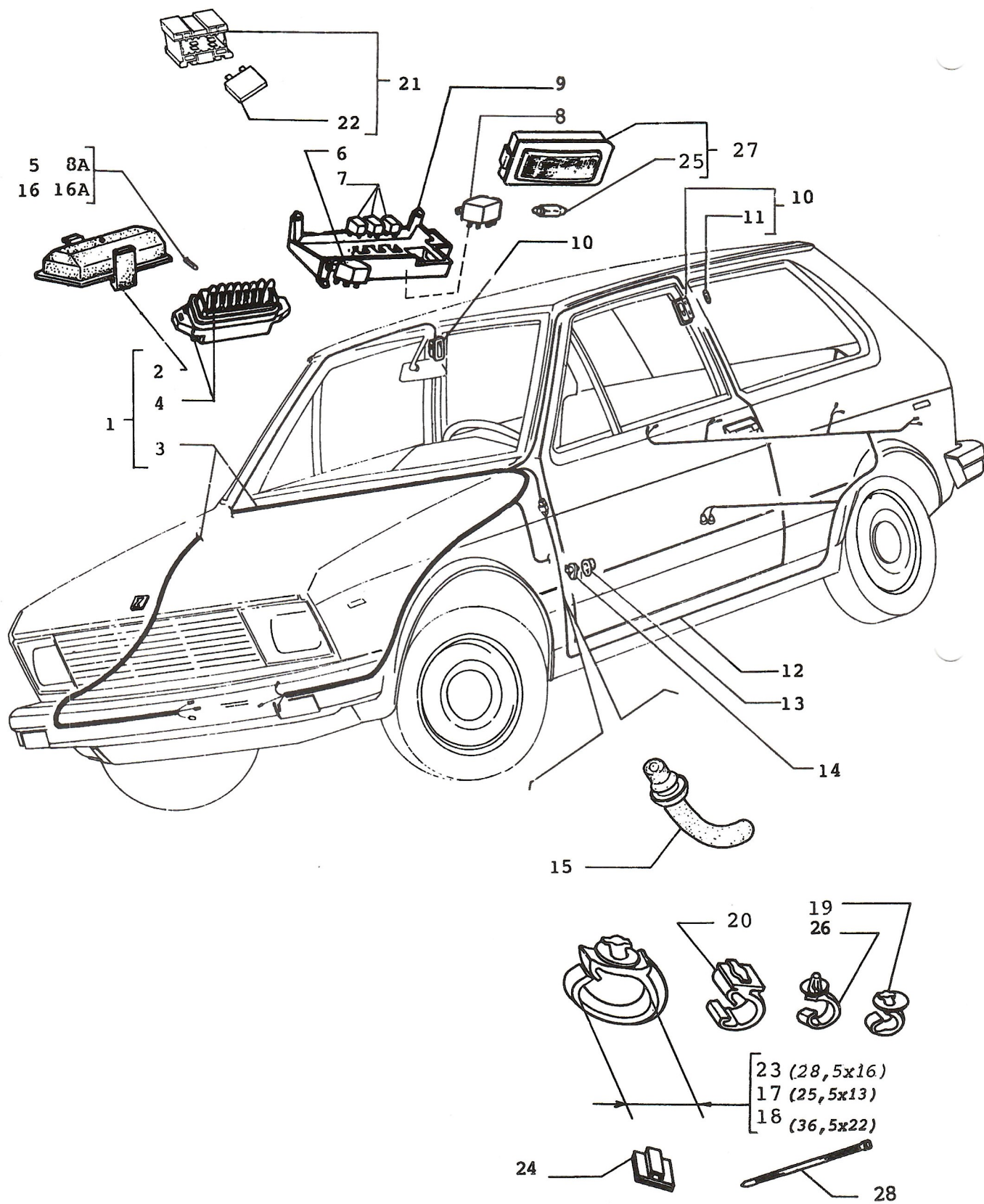
NOTE 2: 2 ND TYPE USED FROM CAR No 31059

NOTE 3: 1 ST TYPE USED UP TO CAR No 6338

NOTE 4: 2 ND TYPE USED FROM CAR No 6339 VIN 363899  
FOR ALL MODELS PRODUCED AFTER (02.16.1987.)NOTE 5: 3 RD TYPE USED FROM CAR No 8650 VIN 426953 ITEMS 17, 18, 19  
AND 20 ARE CANCELLED IN CASE OF USE OF PART  
NBR. 91704166 - HARNESS ASSY (02.22.1988.)

NOTE 6: 2 ND TYPE USED FROM CAR No 9680 VIN 428256 (02.26.1988.)

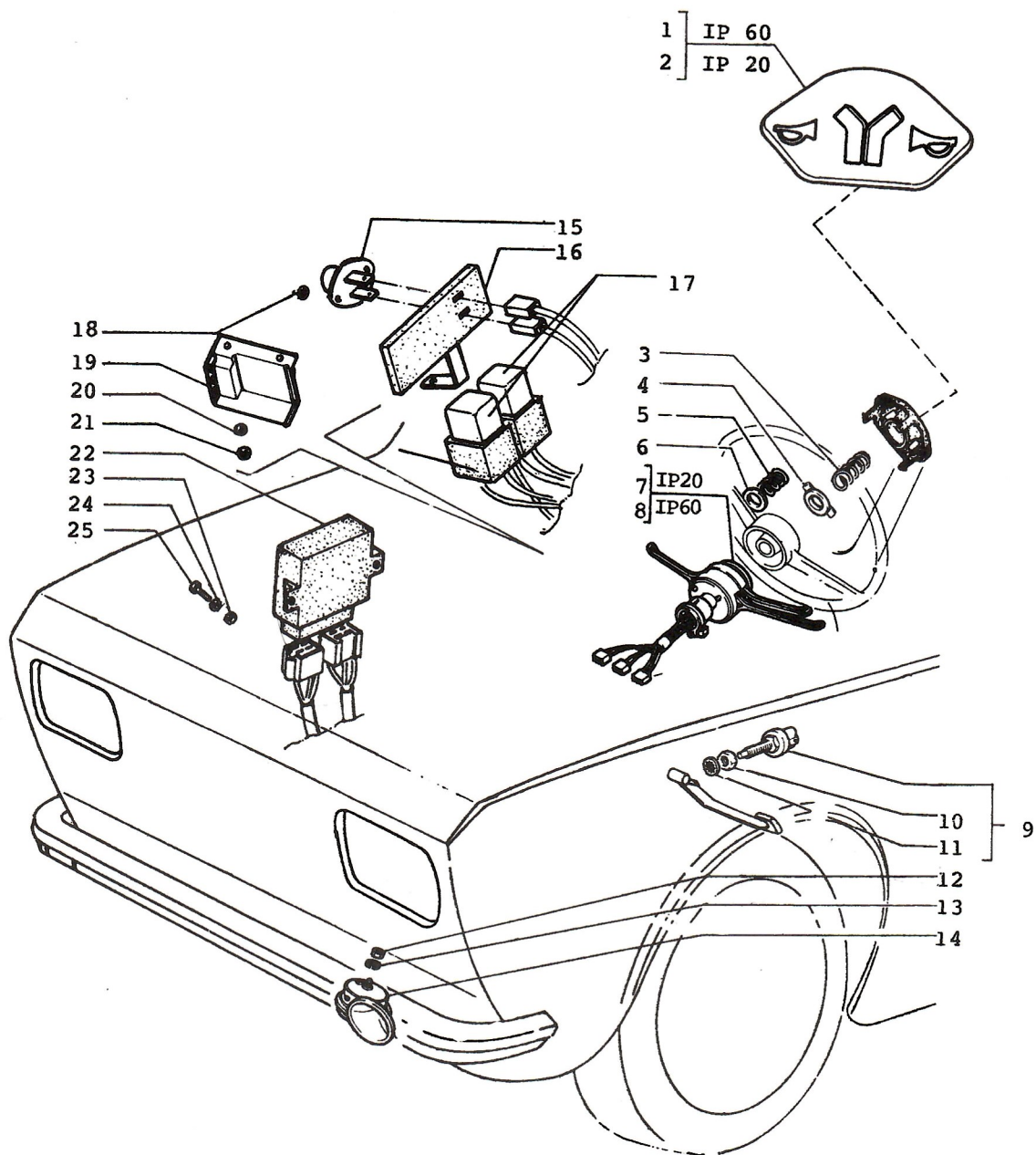
NOTE 7: 4 TH TYPE USED FROM CAR No 13127 VIN 431785 (03.18.1988.)  
3 RD TYPE USED FROM CAR No 13067 VIN 431665 FOR MODEL (31)  
(MATE-N-LOK CONNECTORS) (03.18.1988.)NOTE 8: WITH ELECTRONIC RELAY AND MATE-N-LOK CONNECTORS  
(CANCELLED ITEM 1611489 AND 1612107, INTRODUCED ITEM 1615858)NOTE 9: 1 ST TYPE USED FROM CAR No 17060 VIN 435883  
ENGINE 1159236 (04.27.1988.)



## ELECTRICAL INSTALATION

64.01/3

1.	46631323 (58)	HARNESS-ASSY
2.	4343529	COVER/BOX - FUSE
3.	46631322 (58)	HARNESS-WIRE
4.	4343527	BOX - FUSE
5.	10858090	FUSE - 8 AMP
6.	46630159 (58)	RELAY/DIODE 12 V 30 AMP
	46631707 (58)	RELAY/DIODE 12 V 30 AMP
7.	1617220 (58)	RELAY
	46626715	RELAY
8.	1614192	RELAY/PUMP FUEL
	46626714	RELAY/PUMP FUEL
9.	46625697	SUPPORT
10.	1610532	LAMP - INTERIOR
11.	10853090	BULB - INTERIOR LAMP
12.	46631324 (58)	HARNESS - WIRE RR
13.	1618200	BOOT - DOOR JAM SWITCH
14.	1618199	SWITCH - DOOR JAM BUTTON
15.	46620620	SLEEVE - DOOR JAM
16.	11048990	FUSE - 16 AMP
17.	14572280	CLIP (25,5 x 13)
18.	14572880	CLIP (36,5 x 22)
19.	14572586	CLIP
20.	14570680	CLIP
21.	46629398 (58)	SUPPORT - FUSE 15 AMP
22.	11055090 (58)	FUSE - 15 AMP
23.	14572686 (58)	CLIP (28,5 x 16)
24.	46626716	CLAMP SELFADHESIVE
25.	14150190 (58)	BULB (12 V - 10 W)
26.	14573380	CLAMP
27.	46626024 (58)	LAMP-INTERIOR/ROOF
28.	14560180 (58)	CLIP



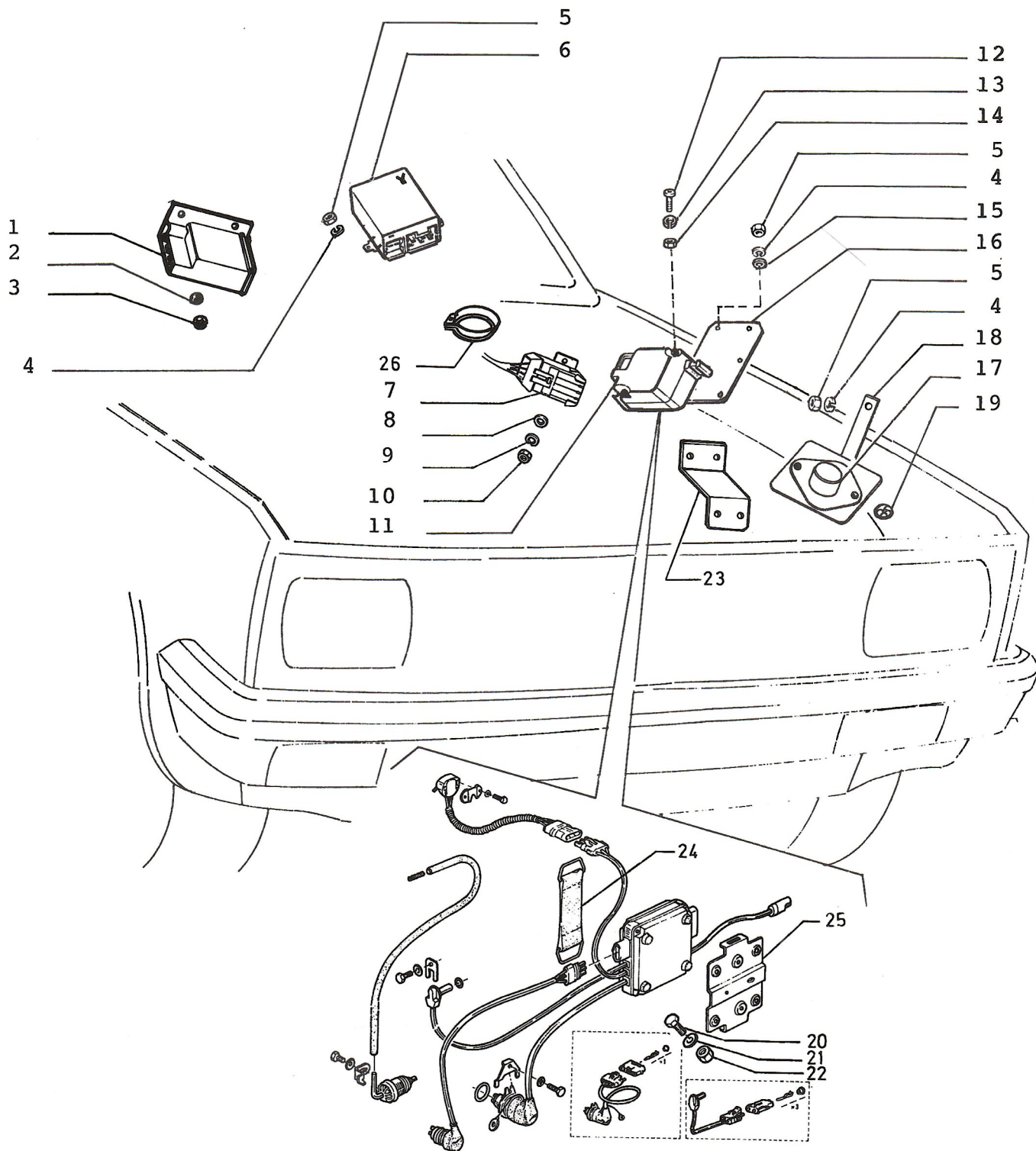
## SIGNALLING DEVICES

65.01

1.	46620039	BUTTON HORN IP 60
2.	46620040	BUTTON HORN IP 20
3.	4426873	SPRING - HORN, BUTTON
4.	4323542	RING - LOCK/HORN BUTTON
5.	4323541	SPRING - HORN BUTTON
6.	4327737	WASHER
7.	1619920	SWITCH - UNIT/STEER COLUMN IP20
	46624900	SWITCH - UNIT/STEER COLUMN IP20 (*1)
8.	1619921	SWITCH - UNIT/STEER COLUMN IP60
	46624901	SWITCH - UNIT/STEER COLUMN IP60 (*1)
9.	4177124	SWITCH - BRAKE LIGHT
10.	10791211	NUT - STOP LIGHT SWITCH
11.	4032794	WASHER - BRAKE SWITCH
12.	16100811	NUT
13.	10516670	WASHER - LOCK
14.	46620217	HORN
15.	46622588 (98)	AMBIENT SWITCH
16.	46622617 (98)	SUPPORT
17.	1611962 (98)	RELAY
18.	46622763 (98)	WASHER
19.	46620657	BUZZER
	46628015 (11,47)	BUZZER (*2)
20.	12605270	WASHER
21.	15896411	NUT
22.	46622592 (98)	CALIFORNIA ELECTRONIC UNIT
23.	15896211 (98)	NUT
24.	10615470 (98)	WASHER - HEATER VALVE
25.	10902211 (98)	SCREW

NOTE 1: 2 ND TYPE USED FROM CAR No 13127 VIN 431785  
2 ND TYPE USED FROM CAR No 13067 VIN 431665 FOR MODEL (31)  
(03.18.1988.)

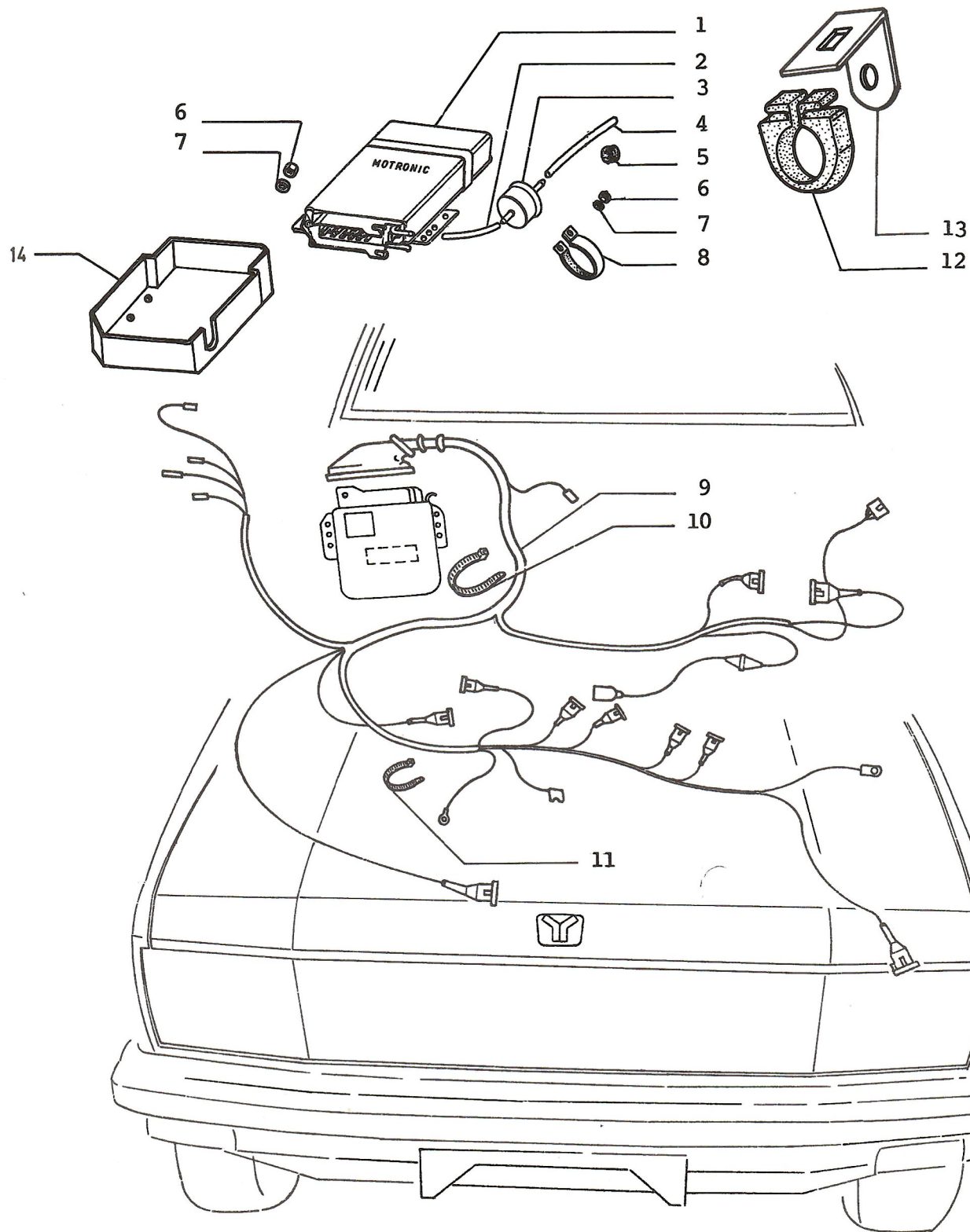
NOTE 2: 2 ND TYPE USED FROM CAR No 17060 VIN 435883  
ENGINE 1159236 (04.27.1988.)



## SIGNALLING DEVICES

65.01/1

1.	46628015 (58)	BUZZER
2.	12605270 (58)	WASHER
3.	15896411 (58)	NUT M 5
4.	12605370 (58)	WASHER
5.	15896211 (58)	NUT M 6
6.	46628421 (58)	TIMER - ELECTRONIC (ELVOD)
	46628536 (58)	TIMER - ELECTRONIC (E.I.)
	46631964 (58)	TIMER - ELECTRONIC (E.I.)
7.	46629913 (58)	CONECTOR - DIAGNOSTIC
8.	10519301 (58)	WASHER
	14497764 (58)	WASHER
9.	10571470 (58)	WASHER - LOCK
	11195470 (58)	WASHER - LOCK
10.	15896411 (58)	NUT M 5
11.	46629366 (58)	SWITCH - INERTIAL
12.	13273011 (58)	SCREW M 4
13.	12598071 (58)	WASHER - LOCK
14.	10721911 (58)	NUT M 4
15.	10519401 (58)	WASHER
16.	46626461 (58)	SUPPORT/SWITCH - INERTIAL
17.	46629330 (58)	SWITCH - AMBIENTAL
18.	46629238 (58)	SUPPORT/SWITCH - AMBIENTAL
19.	46622763 (58)	WASHER
	46622659 (58)	WASHER
20.	10902011	SCREW
21.	10571570	WASHER
22.	10720111	NUT
23.	46634997 (50)	SUPPORT
24.	46634289 (50)	STRAP
25.	46634288 (50)	SUPPORT
26.	10418201 (58,50)	CLAMP

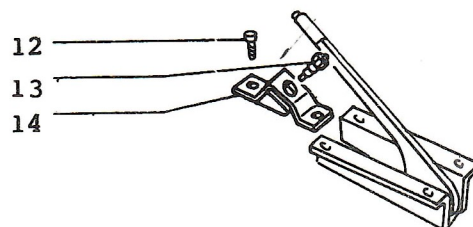
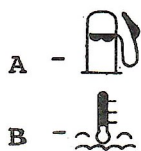
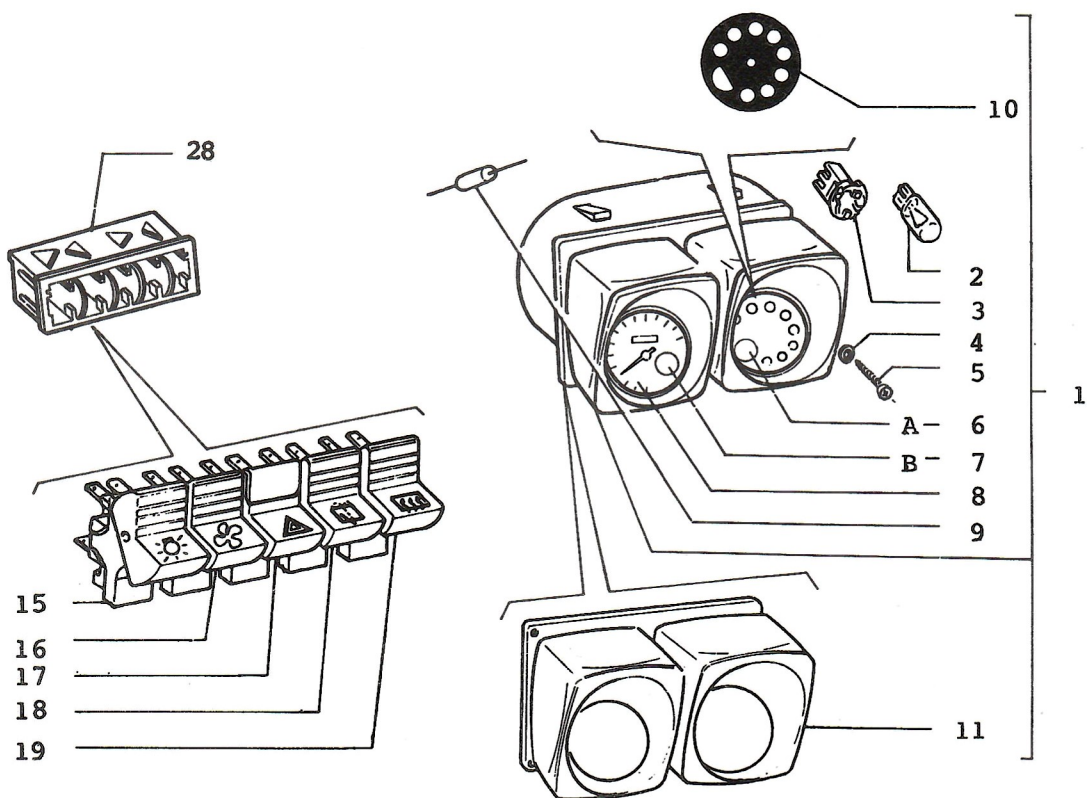
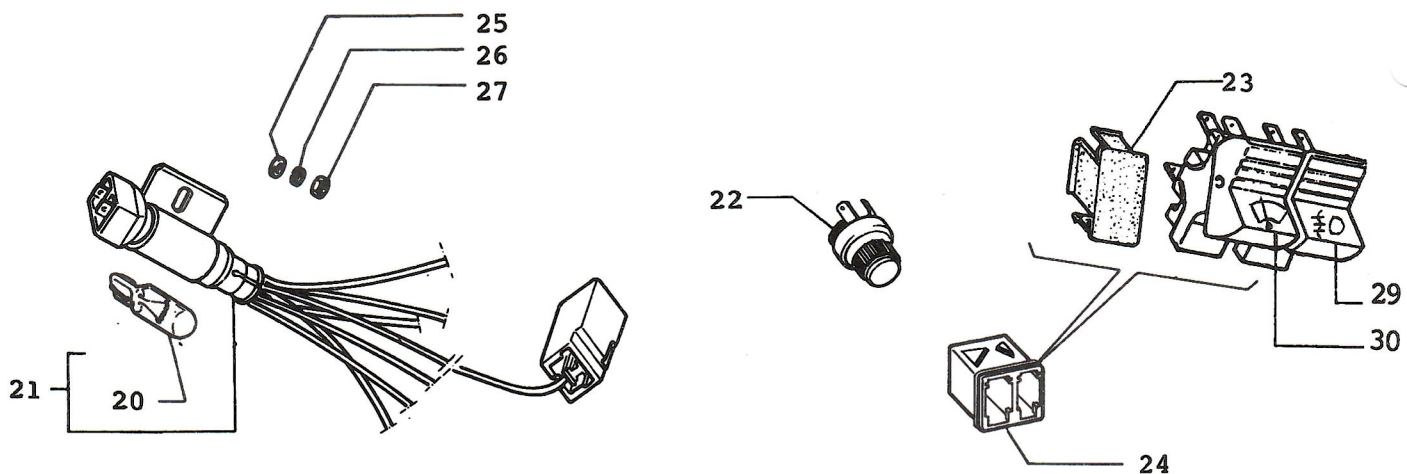


## SIGNALING DEVICES

65.01/2

1.	46627977 (58)	ELECTRONIC DIRECTING UNIT (BOSCH)
	46635311 (50)	ELECTRONIC DIRECTING UNIT (BOSCH)
	46635747 (50)	ELECTRONIC DIRECTING UNIT (BOSCH)
2.	46631505 (58)	HOSE-ELECTRONIC DIRECTING UNIT (CONTINENTAL)
	46633195 (58)	HOSE-ELECTRONIC DIRECTING Ø 5 x 1,5 x 200
3.	46630645 (58)	SILENCER
4.	46631506 (58)	HOSE/SILENCER (CONTINENTAL) Ø 4 x 1,5 x 810
	46633194 (58)	HOSE/SILENCER Ø 5 x 1,5 x 810
	46635964 (50)	HOSE Ø 5 x 1,5 x 900
5.	46630289 (58)	BUSHING
6.	15896211 (58)	NUT M 6
7.	10571570 (58)	WASHER
8.	46641568 (58)	CLAMP/CILENCER (*1)
9.	46628768 (58)	CABLE - ASSY/ELECTRONIC DIRECTING UNIT
	46634275 (50)	CABLE - ASSY/ELECTRONIC DIRECTING UNIT
10.	14568280 (58)	CLAMP L = 140,5 mm
11.	14567787 (58)	CLAMP L = 126,5 mm
12.	46641980 (58)	BUSHING/SILENCER
13.	46641979 (58)	SUPPORT
14.	46635655	PROTECTION

NOTE 1: 1 ST CANCELED ITEM



## INSTRUMENT CLUSTER AND OPERATING INDICATORS

65.03

1.	46620208	CLUSTER - INSTRUMENT (TELEOPTIK) (*1)
	46622500	CLUSTER - INSTRUMENT (MMG) (*2)
	46623076 (27)	CLUSTER - INSTRUMENT (MMG)
	46623073 (27)	CLUSTER - INSTRUMENT (TELEOPTIK)
	46625457 (27)	CLUSTER - INSTRUMENT (MMG) (*3)
	46625449 (27)	CLUSTER - INSTRUMENT (TELEOPTIK) (*3)
	46623260 (44,31)	CLUSTER - INSTRUMENT (TELEOPTIK)
	46623255 (44,31)	CLUSTER - INSTRUMENT (MMG)
	46625456 (44,31)	CLUSTER - INSTRUMENT (MMG) (*3)
	46625448 (44,31)	CLUSTER - INSTRUMENT (TELEOPTIK) (*3)
2.	14143990	BULB - INSTRUMENT CLUSTER 12 Volt - 2 Watt
3.	46600464	HOLDER - BULB
4.	46600467	WASHER/CLUSTER - INSTRUMENT
5.	46600468	SCREW/CLUSTER - INSTRUMENT
6.	4421389	GAUGE - FUEL
7.	46620210	GAUGE - TEMPERATURE FOR 46620208 (TELEOPTIK)
	46622498	GAUGE - TEMPERATURE FOR 46622500 (MMG)
	46623078 (27)	GAUGE - TEMPERATURE FOR 46623076 AND 46623255 (MMG)
	46623075 (27)	GAUGE - TEMPERATURE FOR 46623073 AND 46623260 (TEL.)
8.	46620209	SPEEDOMETER FOR 46620208 (TELEOPTIK)
	46622497	SPEEDOMETER FOR 46622500 (MMG)
	46623582	SPEEDOMETER FOR 46622500 (MMG)
	46623077 (27)	SPEEDOMETER FOR 46623076 (MMG)
	46623074 (27)	SPEEDOMETER FOR 46623073 (TELEOPTIK)
	46623256 (44,31)	SPEEDOMETER FOR 46623255 (MMG)
	46623261 (44,31)	SPEEDOMETER FOR 46623260 (TELEOPTIK)
9.	46600466	FUSE - CLUSTER INSTRUMENT
10.	46600651	WARNING LIGHT PLATE
11.	46600465	COVER/CLUSTER - INSTRUMENT
12.	17672001	SCREW - STOP LIGHT SWITCH
	15646701	SCREW - STOP LIGHT SWITCH
13.	1610865	SWITCH - PARKING BRAKE
14.	4241119	BRACKET
15.	46620212	SWITCH - HEADLAMP
16.	46620213	SWITCH - HEATER FAN
17.	46620218	SWITCH - HAZARD LIGHT
	1618130	SWITCH - ELECTRONIC RELAY (*3)
18.	46620214	SWITCH - REAR WIPER
19.	46620220	SWITCH - REAR DEFOG
	46625168	SWITCH - REAR DEFOG
20.	14143990	BULB - INSTRUMENT CLUSTER
21.	46620222	HARNESS - BULB
	46626732	HARNESS - BULB
	46626734 (31)	HARNESS - BULB
22.	46620741	RHEOSTAT - DASH LIGHT (TELEOPTIK)
	46626622	RHEOSTAT - DASH LIGHT (ELVOD)
23.	4263402	PLUG
24.	4427328	HOUSING - SWITCH
25.	10519301	WASHER
26.	11195470	WASHER
27.	15896411	NUT
28.	4427329	HOUSING - SWITCH
29.	46622300 (31)	SWITCH / LAMP - FOG
30.	46623186 (31)	SWITCH - WIPER PROGRAM
31.	46622137	KNOB / RHEOSTAT (TELEOPTIK)
	46626623	KNOB / RHEOSTAT (ELVOD)

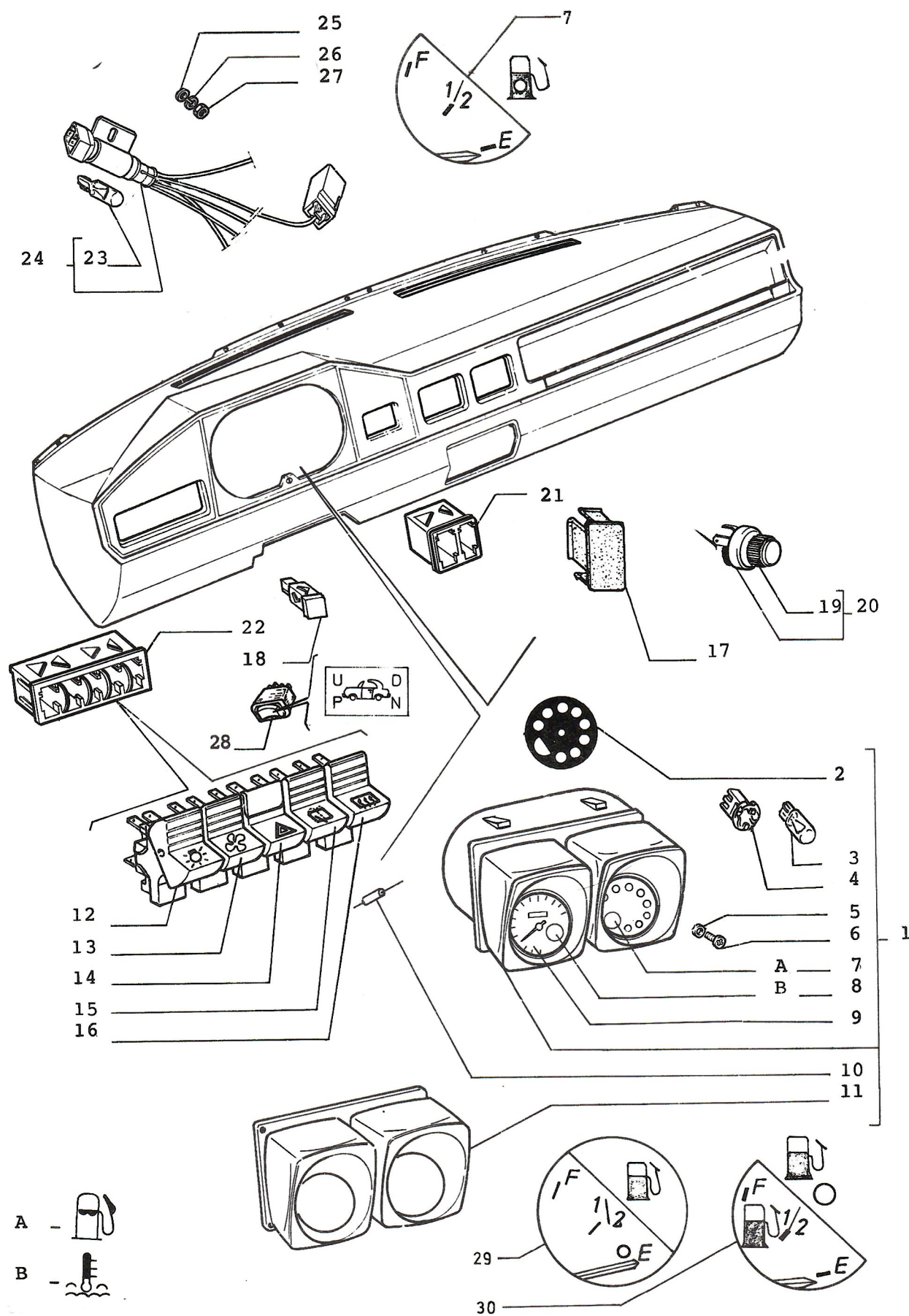
NOTE 1: 1 ST TYPE USED UP TO CAR No 43415

NOTE 2: 2 ND TYPE USED FROM CAR No 43416

NOTE 3: WITH ELECTRONIC RELAY AND MATE - N - LOK CONNECTORS

CANCELLED ITEM 1611489 AND 1612107

INTRODUCED ITEM 1615858

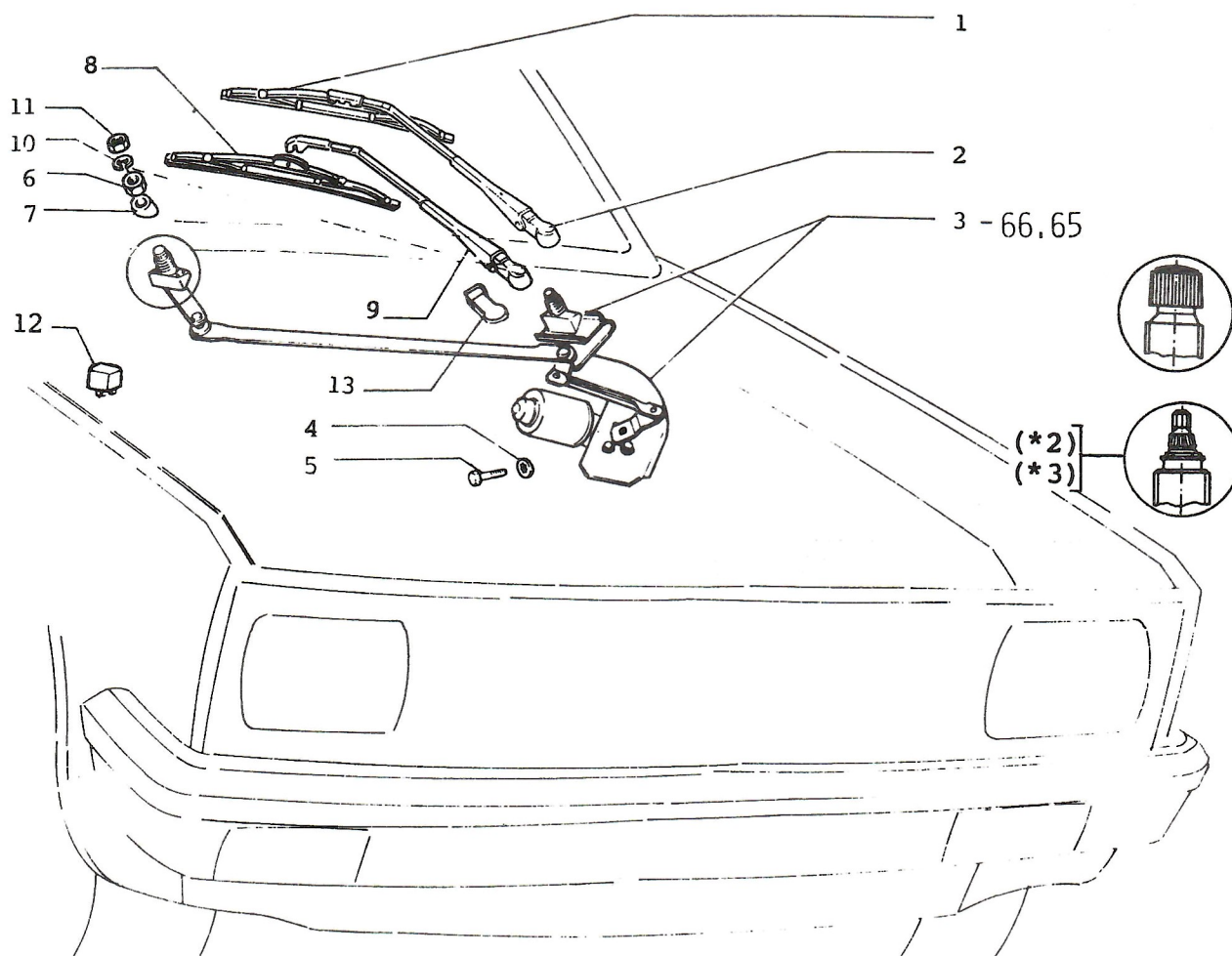


# INSTRUMENT CLUSTER AND OPERATING INDICATORS

65.03/1

1. 46631636 (58,48) CLUSTER - INSTRUMENT (TELEOPTIK) (\*1)
- 46631637 (58,48) CLUSTER - INSTRUMENT (MMG) (\*1)
- 46634630 (58,48) CLUSTER - INSTRUMENT (TELEOPTIK) (\*2)
- 46634631 (58,48) CLUSTER - INSTRUMENT (MMG) (\*2)
- 46634290 (50) CLUSTER - INSTRUMENT (TELEOPTIK)
2. 46600651 WARNING LIGHT PLATE
3. 14143990 BULB/INSTRUMENT CLUSTER
4. 46600464 HOLDER - BULB
5. 46600467 WASHER
6. 46600468 SCREW
7. 4421389 GAUGE - FUEL
8. 46623075 GAUGE - TEMPERATURE (TELEOPTIK)
- 46622498 GAUGE - TEMPERATURE (MMG)
9. 46623261 SPEEDOMETER FOR 46634630, 46631636 (TELEOPTIK)
- 46623256 SPEEDOMETER FOR 46634631, 46631637 (MMG)
- 46634291 (50) SPEEDOMETER FOR 46634290 (TELEOPTIK)
10. 46600466 FUSE - CLUSTER INSTRUMENT
11. 46600465 COVER/CLUSTER - INSTRUMENT
12. 46620212 SWITCH - HEADLAMP
13. 46620213 SWITCH - HEATER FAN
14. 1618130 SWITCH - ELECTRONIC RELAY
15. 46620214 SWITCH - REAR WIPER
16. 46625168 SWITCH - REAR DEFOG
17. 4263402 PLUG
18. 46629280 (58) BULB
19. 46622137 KNOB/RHEOSTAT (TELEOPTIK)
- 46626623 KNOB/RHEOSTAT (ELVOD)
20. 46620741 RHEOSTAT - DASH LIGHT (TELEOPTIK)
- 46626622 RHEOSTAT - DASH LIGHT (ELVOD)
21. 4427328 HOUSING - SWITCH
22. 4427329 HOUSING - SWITCH
23. 14143990 BULB - INSTRUMENT CLUSTER
24. 46626732 HARNESS - BULB
- 46626734 (48) HARNESS - BULB
25. 10519301 WASHER
26. 11195470 WASHER
27. 15896411 NUT
28. 46630467 (48) SWITCH/TOPSTACK
29. 46635080 GAUGE - FUEL /MMG/ FOR 46634631
30. 46635079 GAUGE - FUEL (TELEOPTIK) FOR 46634630

NOTE 1: WITHOUT INDICATOR MEMORY



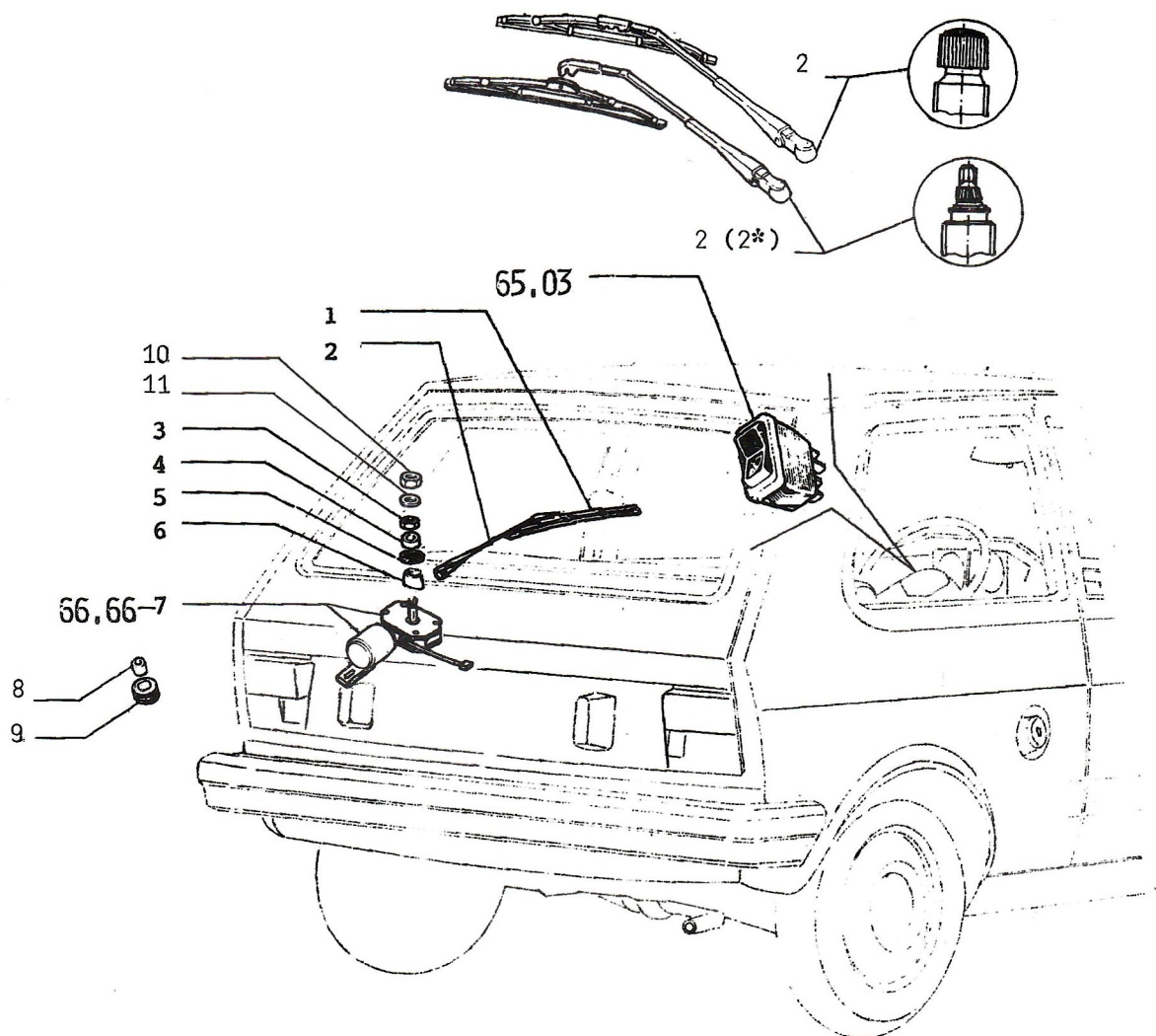
1.	46621496	BLADE - WIPER/FRONT (FAJ)
2.	46621497	ARM - WIPER/FRONT (FAJ)
3.	46620216	WINDSHIELD WIPER - ASSY (PES)
	46620603	WINDSHIELD WIPER - ASSY (R.ČAJAVEC)
	46622796 (27)	WINDSHIELD WIPER - ASSY (PES) (*2)
	46622792 (27)	WINDSHIELD WIPER - ASSY (R.ČAJAVEC) (*2)
	46624983	WINDSHIELD WIPER - ASSY (PES) (*3)
	46624927	WINDSHIELD WIPER - ASSY (R.ČAJAVEC) (*3)
4.	12599570	LOCKWASHER
5.	10902221	BOLT
6.	16110780	NUT (EM16x15)
	1017506	NUT (EM16x15)
7.	4413051	BUSHING - WIPER ARM
8.	46623352 (27)	BLADE - WIPER/FRONT (FAJ) (*1)
	46623358 (27)	BLADE - WIPER/FRONT (R.ČAJAVEC) (*1)
9.	91703816 (27)	ARM - WIPER/FRONT (*1)
	46623357 (27)	ARM - WIPER/FRONT (*2) (FAJ)
	46623344 (27)	ARM - WIPER/FRONT (*2) (R.ČAJAVEC)
10.	10571579 (27)	WASHER (*2)
11.	15896211 (27)	NUT (M6) (*2)
12.	46623195 (31)	RELAY - WIPER PROGRAM ("R.ČAJAVEC")
	46625761 (31)	RELAY - WIPER PROGRAM ("SIMENS")
13.	46602424 (27)	BOOT (FAJ) (*2)

NOTE 1: 2 ST TYPE USED FROM CAR No 17901 VIN 375455

NOTE 2: 3 ND TYPE USED FROM CAR No 25854 VIN 383415

NOTE 3: 3 ND TYPE USED FROM CAR No 13127 VIN 431785

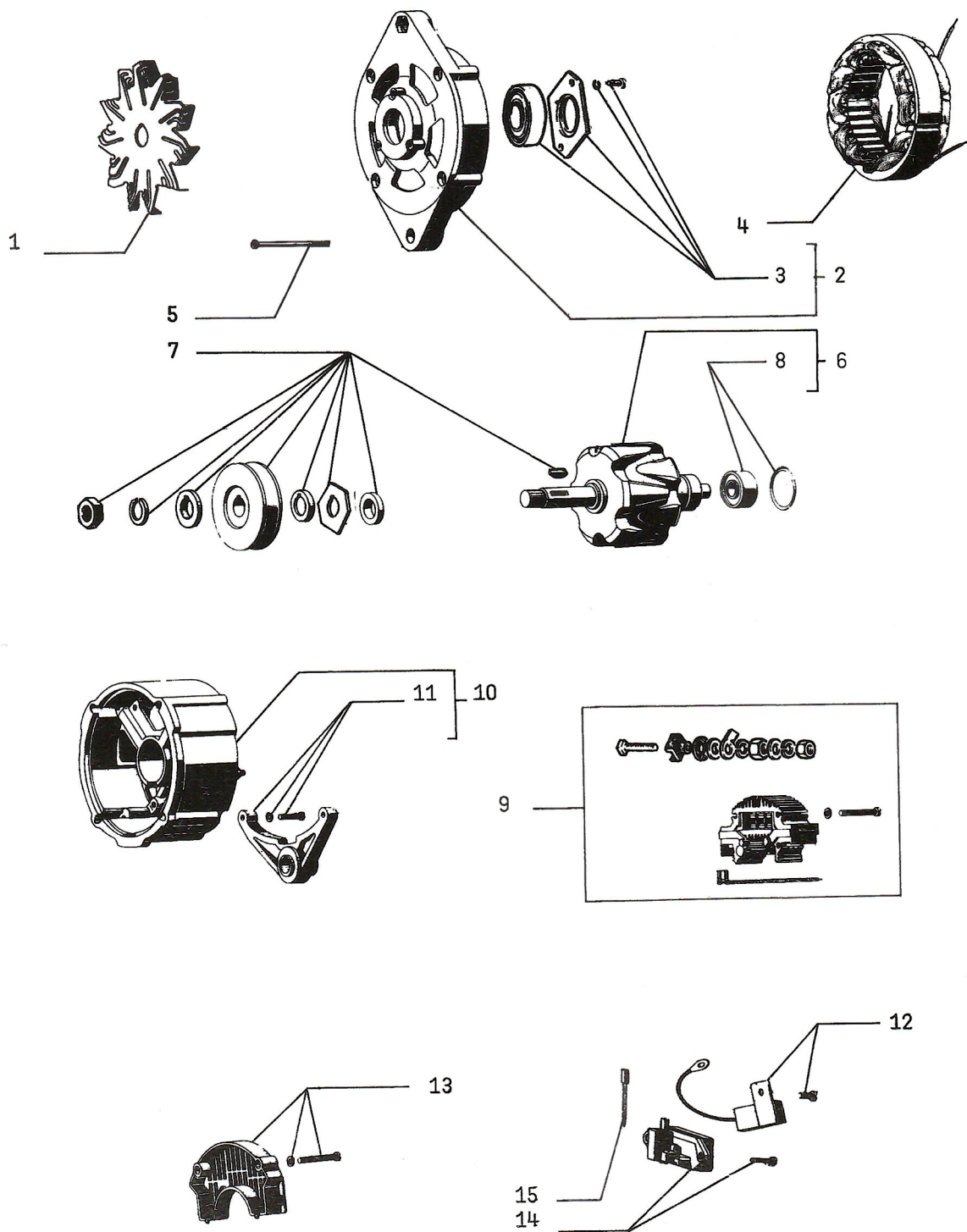
3 ND TYPE USED FROM CAR No 13067 VIN 431665 FOR (31)  
(03.18.1988.)



1.	91702761	BLADE-WIPER REAR
	46621511	BLADE-WIPER REAR (R.Č.) (*2)
	46623088	BLADE-WIPER REAR (FAJ) (*2)
2.	1616942	ARM-WIPER/REAR
	46626778	ARM-WIPER/REAR (*2)
	46621512	ARM-WIPER/REAR (R.Č.) (*2)
3.	1017506	FISHPLATE-RR/WIPER MOTOR (EM 16x15)
4.	4423328	WISHER-WIPER MOTOR
5.	4423329	WASHER-WIPER MOTOR
6.	1613090	CASING-WIPER MOTOR
7.	46620891	MOTOR-WIPER REAR
	91704156	MOTOR-WIPER REAR (*1)
	46624889	MOTOR-WIPER REAR (*2)
8.	46628864	CASING (*2)
9.	46628863	BUSHING (*2)
10.	15896211	NUT (*2)
11.	12605371	WASHER (*2)

NOTE 1: 2 ND TYPE USED FROM CAR No 1438 VIN 433279  
(04.06.1988.)

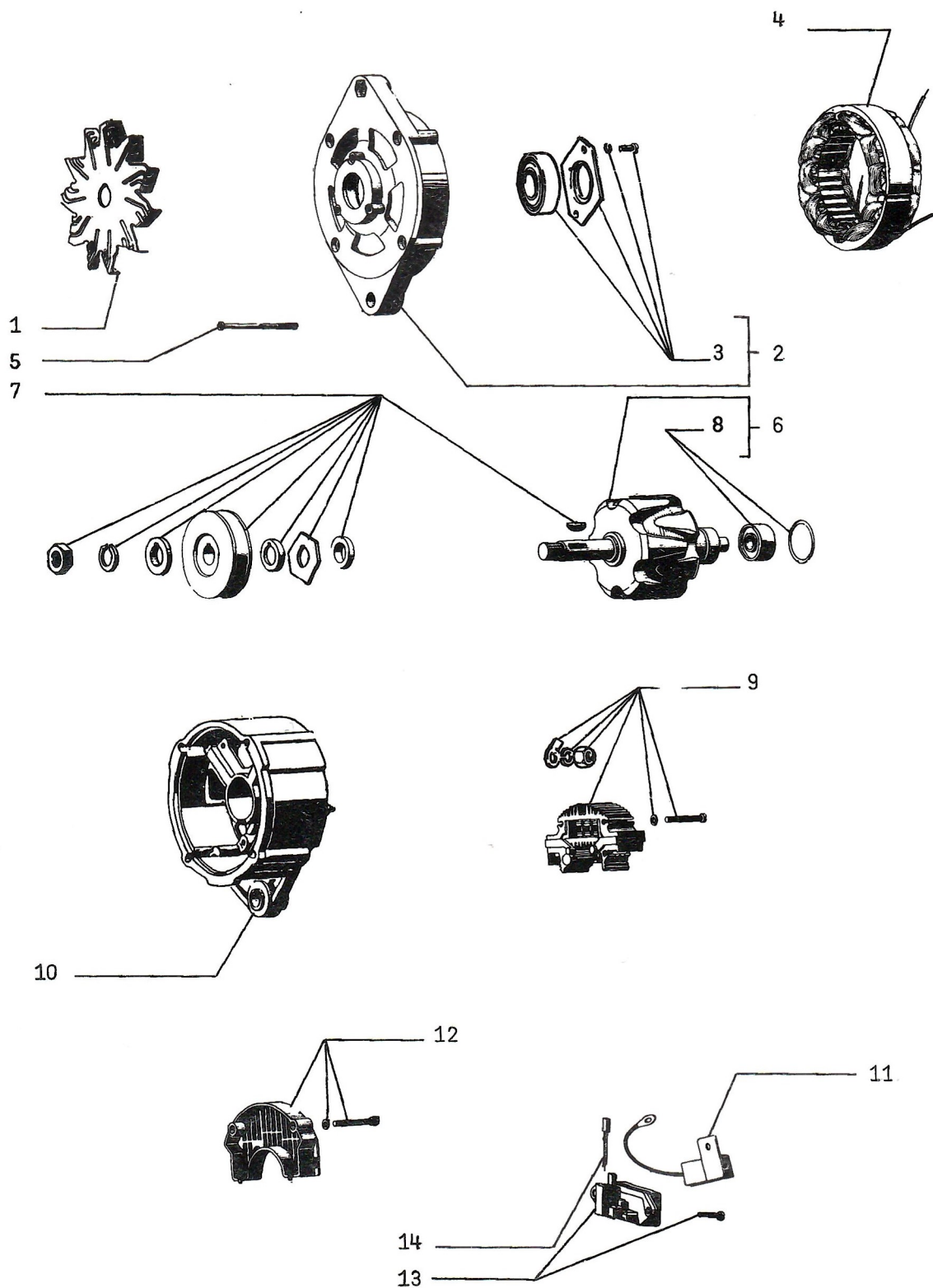
NOTE 2: FOR ALL MODELS PRODUCED AFTER (1989.)



ALTERNATOR 46620183  
46624644 (31)

66.03

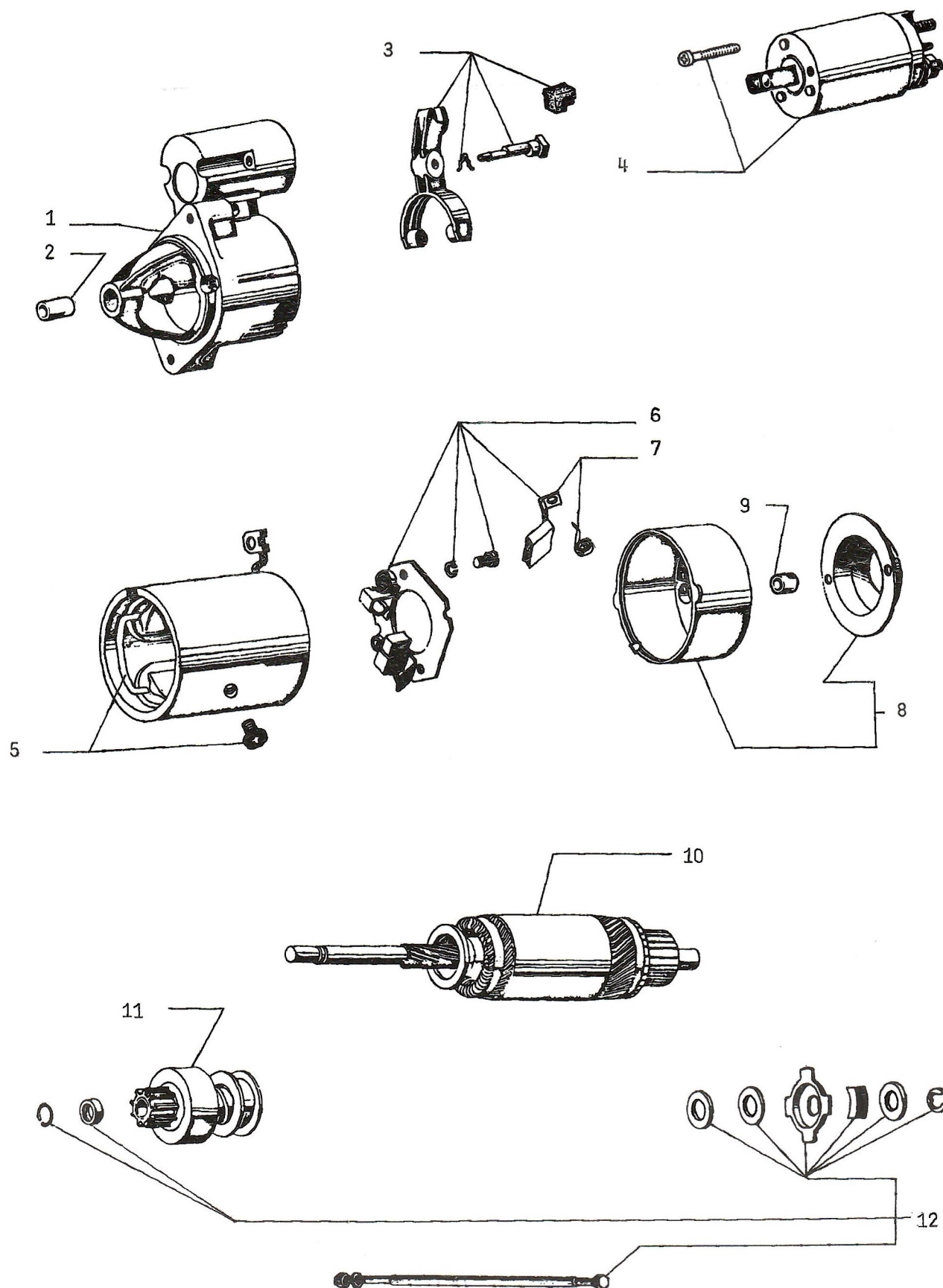
1.	46600174	BLADE - ALTERNATOR FAN
2.	46600175	SUPPORT - COMPL.
3.	46600176	BEARING
4.	46600177	STATOR
	46602321 (31)	STATOR FOR 46624644
5.	46602644	STUD - ALTERNATOR
6.	46602645	ARMATURE
	46602646 (31)	ARMATURE FOR 46624644
7.	46602647	RULLEY COMPL. ALTERNATOR
8.	1303678	BEARING COMPL.
9.	46602648	RECTIFIER COMPL.
10.	46600184	HOUSING COMPL.
11.	46600185	SUPPORT ALTERNATOR HOUSING
12.	1302217	CENDENSER COMPL.
13.	1302349	PLATE CONITACT
14.	46602201	REGULATOR VOLTAGE
	46602345 (31)	REGULATOR VOLTAGE FOR 46624644
15.	46602643	BRUSH



ALTERNATOR 46641386  
46641387 (31)

66.03/1

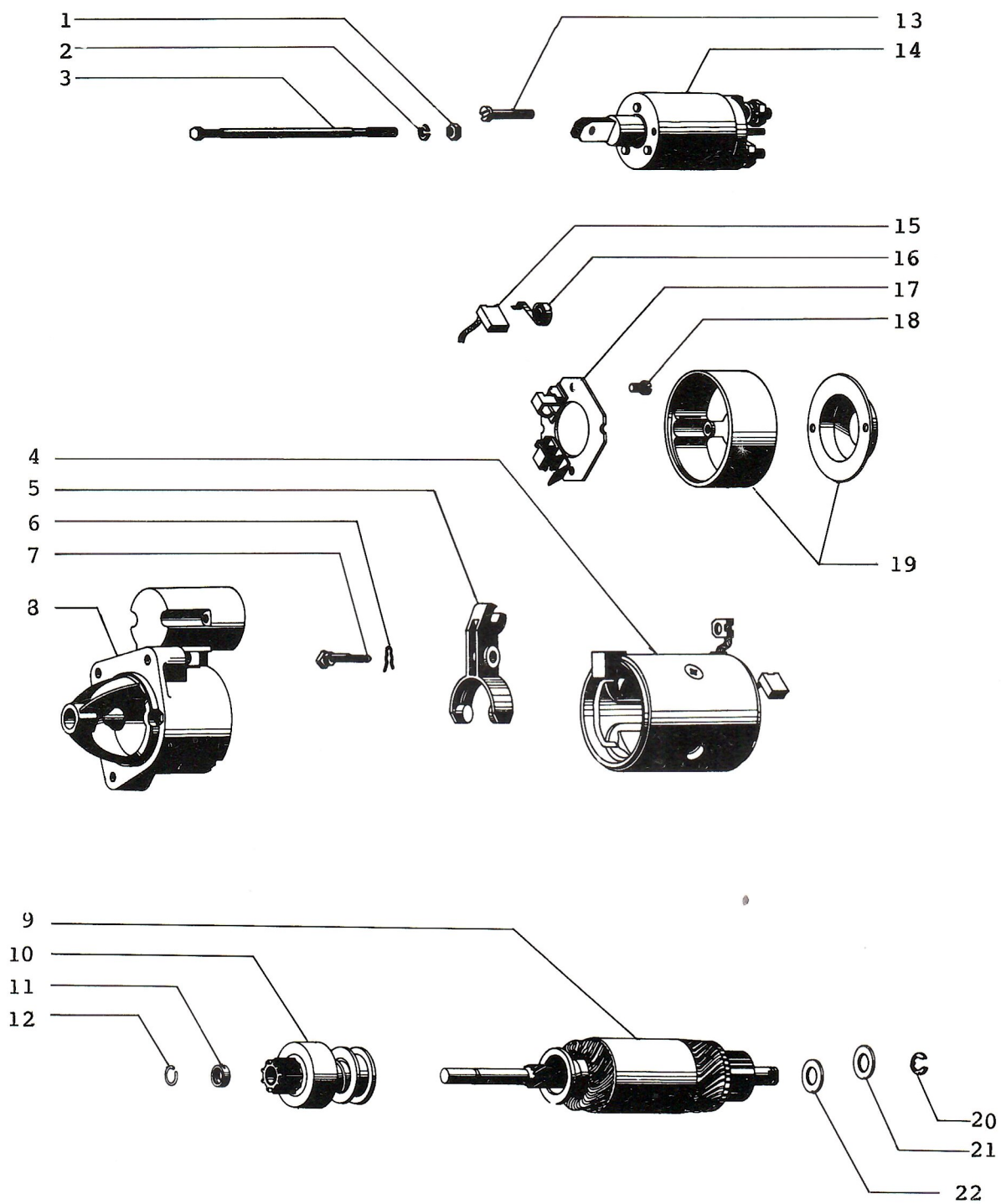
1.	46600174	BLADE - ALTERNATOR FAN
2.	46602572	SUPPORT COMPL.
3.	46600176	BEARING COMPL.
4.	46600177	STATOR
	46602321 (31)	STATOR FOR 46641387
5.	46602306	SCREW ALTERNATOR
6.	46602649	ARMATURE
	46602650 (31)	ARMATURE FOR 46641387
7.	46602651	PULLEY - ALTERNATOR
8.	1303678	BEARING
9.	46602336	RECTIFIER COMPL.
10.	46602640	HOUSING COMPL.
11.	46602313	CONDENSER
12.	46602652	RECTIFIER COMPL.
13.	46602315	REGULATOR VOLTAGE
	46602442 (31)	REGULATOR VOLTAGE FOR 46641387
14.	46602643	BRUSH



## STARTER MOTOR 46621390

66.08

1.	46600422	SUPPORT - STARTER MOTOR
2.	46602653	BUSHING
3.	46602654	FORK
4.	46600423	SOLENOID
5.	46602655	STATOR
6.	46602656	HOLDER-BRUSH
7.	1335354	SMALL-BRUSH COMPL.
8.	46602657	SUPPORT END STARTER MOTOR
9.	1301527	BUSHING
10.	46602216	ROTOR
11.	1335345	DRIVE-STARTER
12.	46602599	ARMATURE-STARTER MOTOR



STARTER MOTOR - 1616404 »R.Č.«

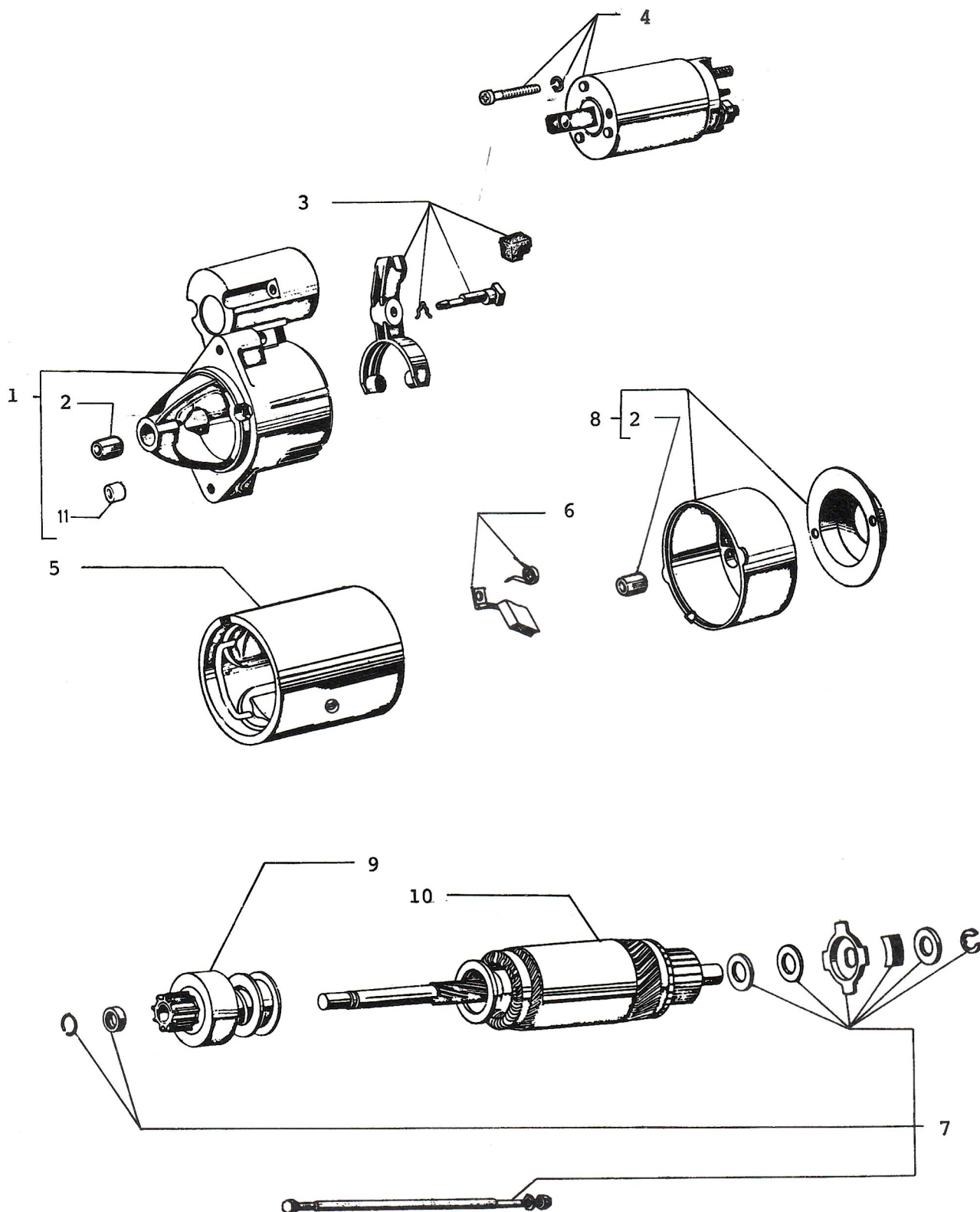
66.08/1

JULY 1989.

STARTER MOTOR 1616404 "R.Č."

66.08/1

1.	1304577	NUT/STARTER MOTOR
2.	1304576	WASHER/STARTER - MOTOR
3.	1304575	SCREW/STARTER - MOTOR
4.	1304569	HOUSING
5.	1304568	FORK
6.	1304567	PIN
7.	1304566	SHAFT
8.	1304565	SUPPORT
9.	1304561	ARMATURE
10.	1304560	DRIVE
11.	1304559	BUSHING
12.	1304541	RING - LOCK
13.	1304578	SCREW
14.	1304579	SOLENOID
15.	1304570	BRUSH
16.	1304571	SPRING
17.	1304572	HOLDER - BRUSH
18.	1304573	SCREW
19.	1304574	SUPPORT
20.	1304564	EASHER
21.	1304563	WASHER
22.	1304562	WASHER

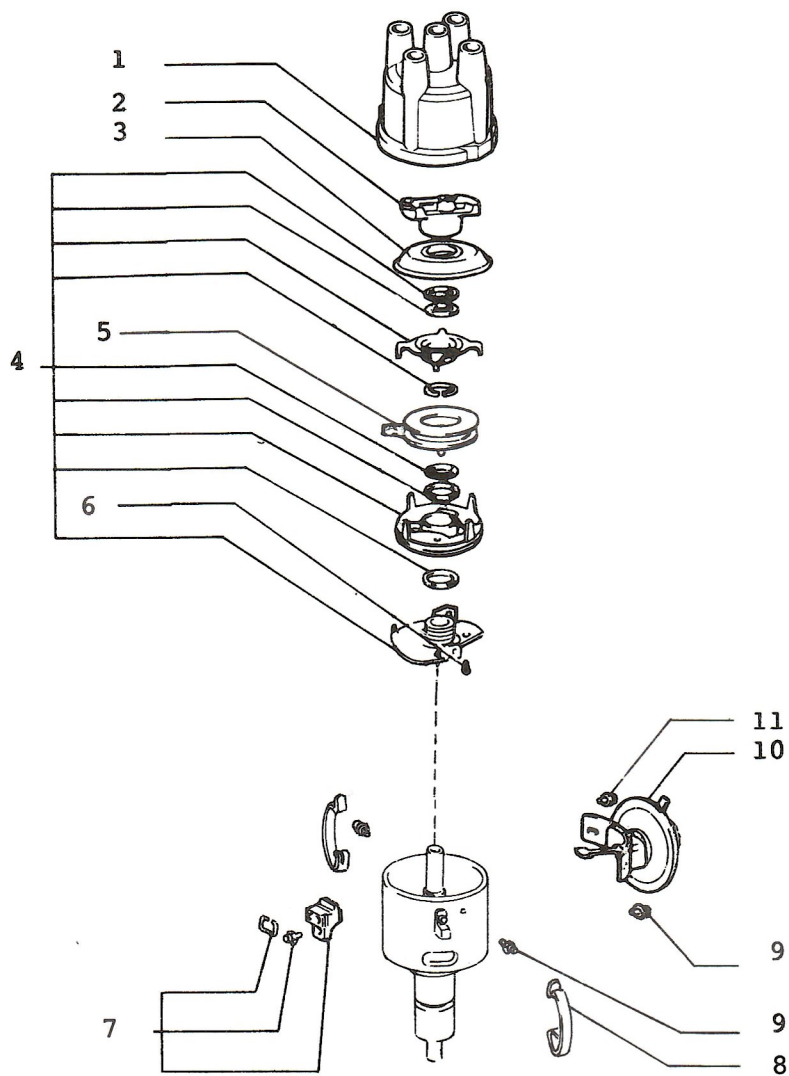


STARTER MOTOR 46629781-AZE 1501 "ISKRA"

46634235 AZE 1510 "ISKRA"

66.08/2

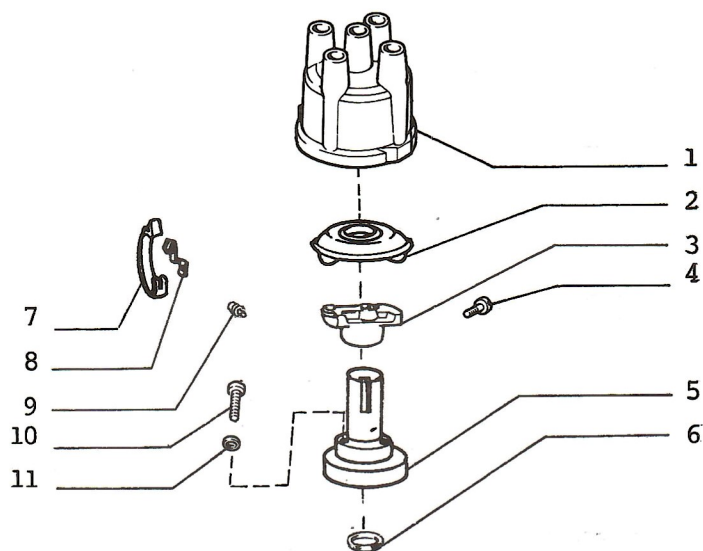
- |     |               |                           |
|-----|---------------|---------------------------|
| 1.  | 46602793      | SUPPORT - STARTER MOTOR   |
|     | 46602992 (50) | SUPPORT - STARTER MOTOR   |
| 2.  | 46602794      | BUSHING                   |
| 3.  | 46602795      | FORK                      |
| 4.  | 46602796      | SOLENOID                  |
| 5.  | 46602797      | STATOR                    |
|     | 46602993 (50) | STATOR                    |
| 6.  | 46602798      | SMALL - BRUSH COMPL       |
| 7.  | 46602802      | ARMATURE - STARTER MOTOR  |
| 8.  | 46602799      | SUPPORT END STARTER MOTOR |
| 9.  | 46602800      | DRIVE - STARTER           |
| 10. | 46602801      | ROTOR                     |
|     | 46602994 (50) | ROTOR                     |
| 11. | 46602621 (50) | BUSHING                   |



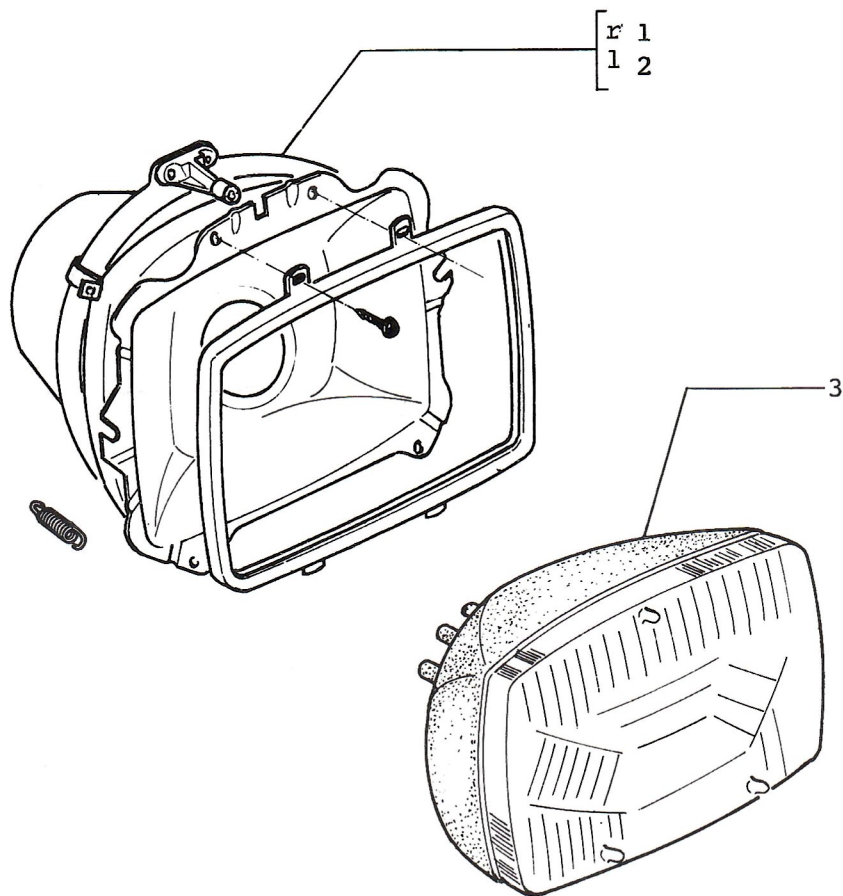
## IGNITION DISTRIBUTOR COMPONENTS

66.14

- |     |               |                               |
|-----|---------------|-------------------------------|
| 1.  | 46600193      | CAP - DISTRIBUTOR             |
| 2.  | 46600194      | ROTOR - DISTRIBUTOR           |
| 3.  | 46600195      | SHIELD - DISTRIBUTOR          |
| 4.  | 46600312      | ASSY PICK UP DISTRIBUTOR      |
| 5.  | 46600199      | WINDING - DISTRIBUTOR         |
| 6.  | 46600200      | SCREW - DISTRIBUTOR           |
| 7.  | 46600313      | INSULATOR - DISTRIBUTOR       |
| 8.  | 46600202      | CLIP - DIST CAP               |
| 9.  | 46600203      | SCREW - ADVANCE - VACUUM      |
| 10. | 46600205      | ADVANCE - VACUUM              |
|     | 46602665 (27) | ADVANCE - VACUUM FOR 46623036 |
| 11. | 46600204      | SCREW - VACUUM ADVANCE        |



- |     |               |                               |
|-----|---------------|-------------------------------|
| 1.  | 46641352      | CAP - DISTRIBUTOR (BOSCH)     |
|     | 46600193      | CAP - DISTRIBUTOR (BOSCH)     |
| 2.  | 46641452 (58) | SHIELD - DISTRIBUTOR (BOSCH)  |
| 3.  | 46641622 (58) | ROTOR - DISTRIBUTOR (BOSCH)   |
| 4.  | 46641623 (58) | SCREW - DISTRIBUTOR (BOSCH)   |
| 5.  | 46641455 (58) | RECTIFIER-DISTRIBUTOR (BOSCH) |
| 6.  | 46641645 (58) | O-RING (BOSCH)                |
| 7.  | 46641458 (58) | CLIP (BOSCH)                  |
| 8.  | 46641459 (58) | CLIP (BOSCH)                  |
| 9.  | 10443011 (58) | SCREW                         |
| 10. | 14305520 (58) | SCREW                         |
| 11. | 10571470 (58) | WASHER                        |



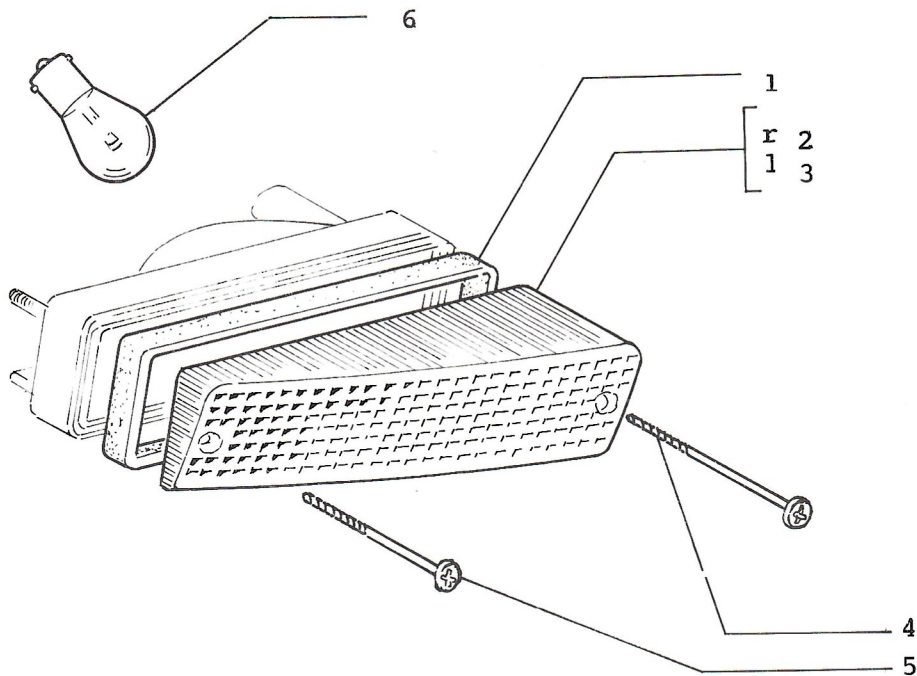
- |    |         |                 |
|----|---------|-----------------|
| 1. | 1469340 | SUPPORT R/H     |
| 2. | 1469341 | SUPPORT L/H     |
| 3. | 1619916 | LENS - HEADLAMP |

HEADLAMP

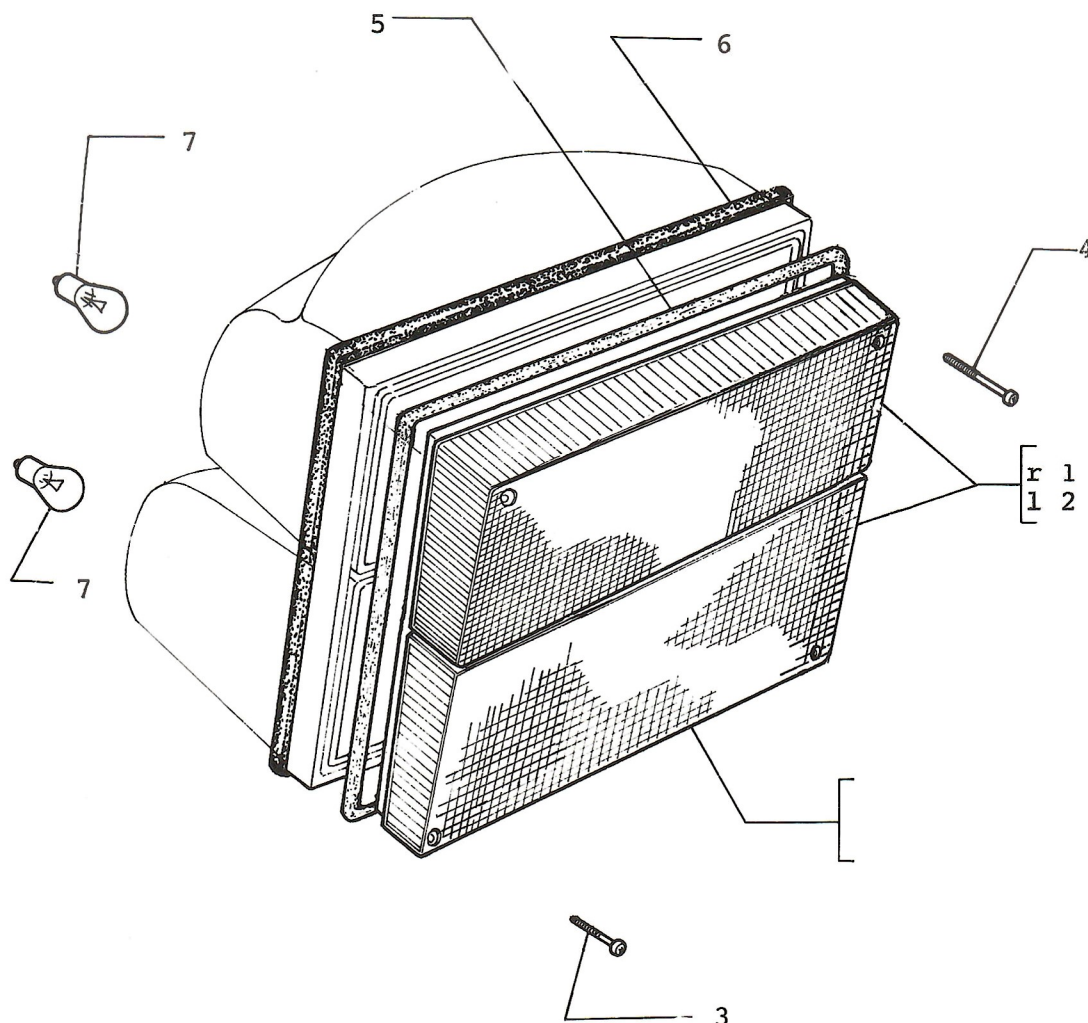
46620766 R 46620828 1

66,29

JULY 1989.



- |    |          |                  |
|----|----------|------------------|
| 1. | 4326561  | GASKET           |
|    | 1454582  | GASKET           |
| 2. | 4418895  | LENS R/H         |
| 3. | 4418896  | LENS L/H         |
| 4. | 15643307 | SCREW (M3, 5x45) |
| 5. | 15642807 | SCREW (M3, 5x19) |
|    | 15902707 | SCREW (M3, 5x19) |
| 6. | 14144690 | BULB (12V-5/21W) |



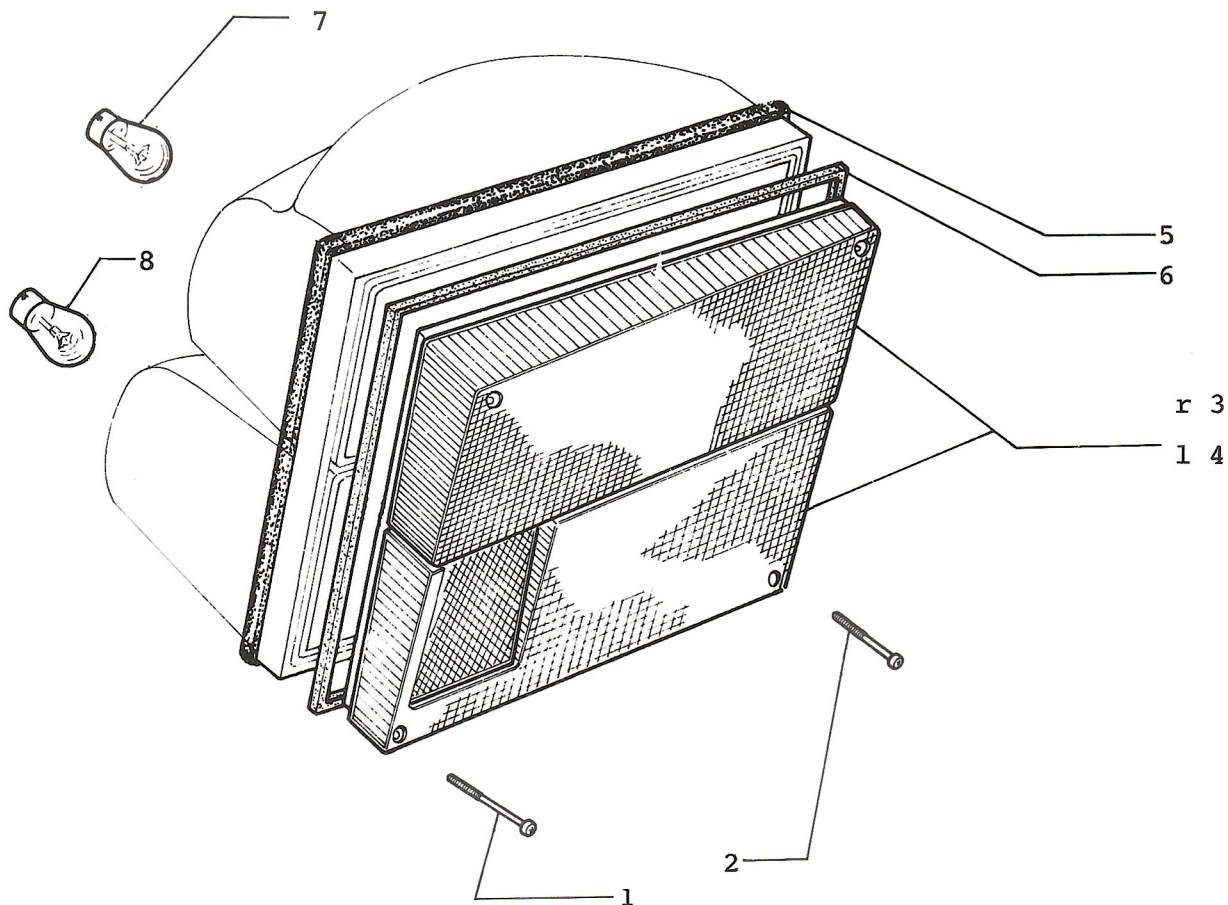
- |    |               |                                      |
|----|---------------|--------------------------------------|
| 1. | 1469267 (27)  | LENS/LAMP - BACK UP R/H              |
| 2. | 1469268 (27)  | LENS/LAMP - BACK UP L/H              |
| 3. | 15642707 (27) | SCREW M3,5x16                        |
|    | 15687307 (27) | SCREW M3,5x16                        |
| 4. | 15643207 (27) | SCREW M3,5 x 38                      |
| 5. | 46600894 (27) | GASKET L=540                         |
| 6. | 46600895 (27) | GASKET L=510                         |
| 7. | 14148190 (27) | BULB (12v-21W)                       |
|    | 14144690      | BULB (12 v - 5/21 w) FOR 46629364/65 |

**LAMP — BACK UP**

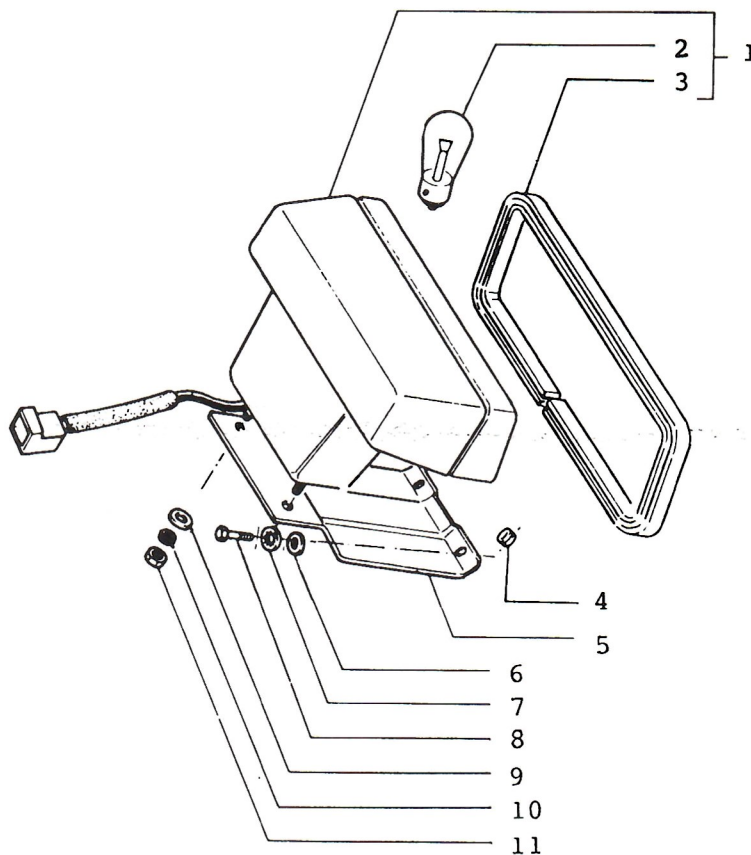
46621053 R 46621054 L  
 46624910 R 46624911 L  
 46631389 R 46631390 L  
 46629364 R 46629365 L

**66.33**

**MARCH 1987**



- |    |          |                                     |
|----|----------|-------------------------------------|
| 1. | 15643207 | SCREW - TAIL LAMP ASSEMBLY M 3,5x38 |
| 2. | 15642707 | SCREW TAIL LAMP ASSEMBLY M 3,5x16   |
|    | 15687307 | SCREW TAIL LAMP ASSEMBLY M3,5x16    |
| 3. | 4421880  | LENS - TAIL/LAMP R/H                |
| 4. | 4421881  | LAMP - TAIL L/H                     |
| 5. | 1469352  | GASKET - TAIL LIGHT ASSY            |
| 6. | 1469351  | GASKET - TAIL LIGHT ASSY            |
|    | 1454748  | GASKET - TAIL/LAMP                  |
| 7. | 14148190 | BULB (12V-21W)                      |
| 8. | 14144690 | BULB (12V-5/21W)                    |



1.	46621145	LAMP TAIL
	46624845	LAMP TAIL (*5)
2.	14148190	BULB
3.	1469400	GASKET
4.	10396180	RING (*2)
5.	1469294	SUPPORT - LAMP TAIL
	46621798	SUPPORT - LAMP TAIL (*1)
	46622304	SUPPORT - LAMP TAIL (*2)
	46622680 (27)	SUPPORT - LAMP TAIL (*4)
6.	10615371	WASHER (*3)
	10615471 (27)	WASHER (*4)
7.	10519301	WASHER (*3)
	10519401 (27)	WASHER (*4)
8.	10977611	SCREW (*3)
	10902011 (27)	SCREW M6 x 12 (*4)
9.	10615307	WASHER
10.	10519307	WASHER
11.	15896407	SCREW

NOTE 1: 1 ST TYPE USED UP TO CAR No 22812

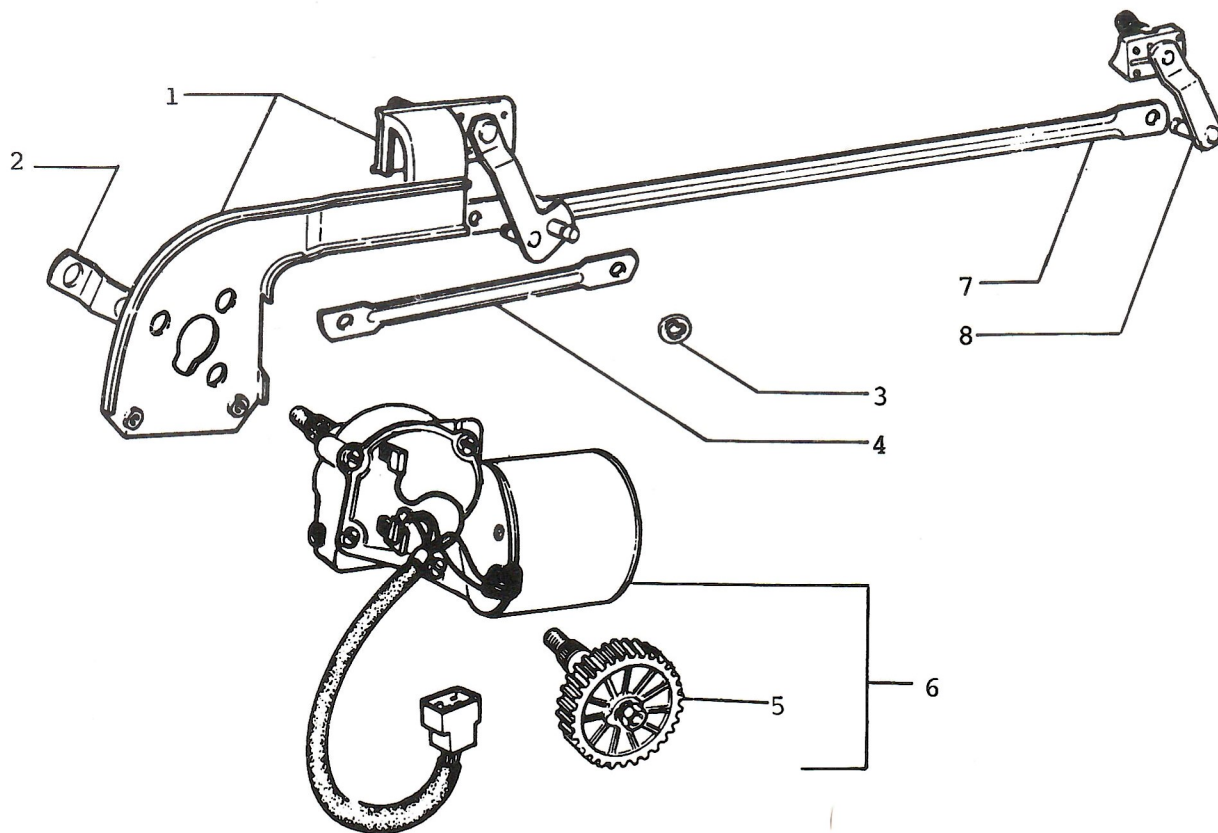
NOTE 2: 2 ND TYPE USED FROM CAR No 22813

NOTE 3: 1 ST TYPE USED UP TO CAR No 17005 VIN 374640

NOTE 4: 2 ND TYPE USED FROM CAR No 17006 VIN 374641

NOTE 5: 2 ND TYPE USED FROM CAR No 13127 VIN 431785

2 ND TYPE USED FROM CAR No 13067 VIN 431665 FOR MODEL (31) (03.18.1988.)

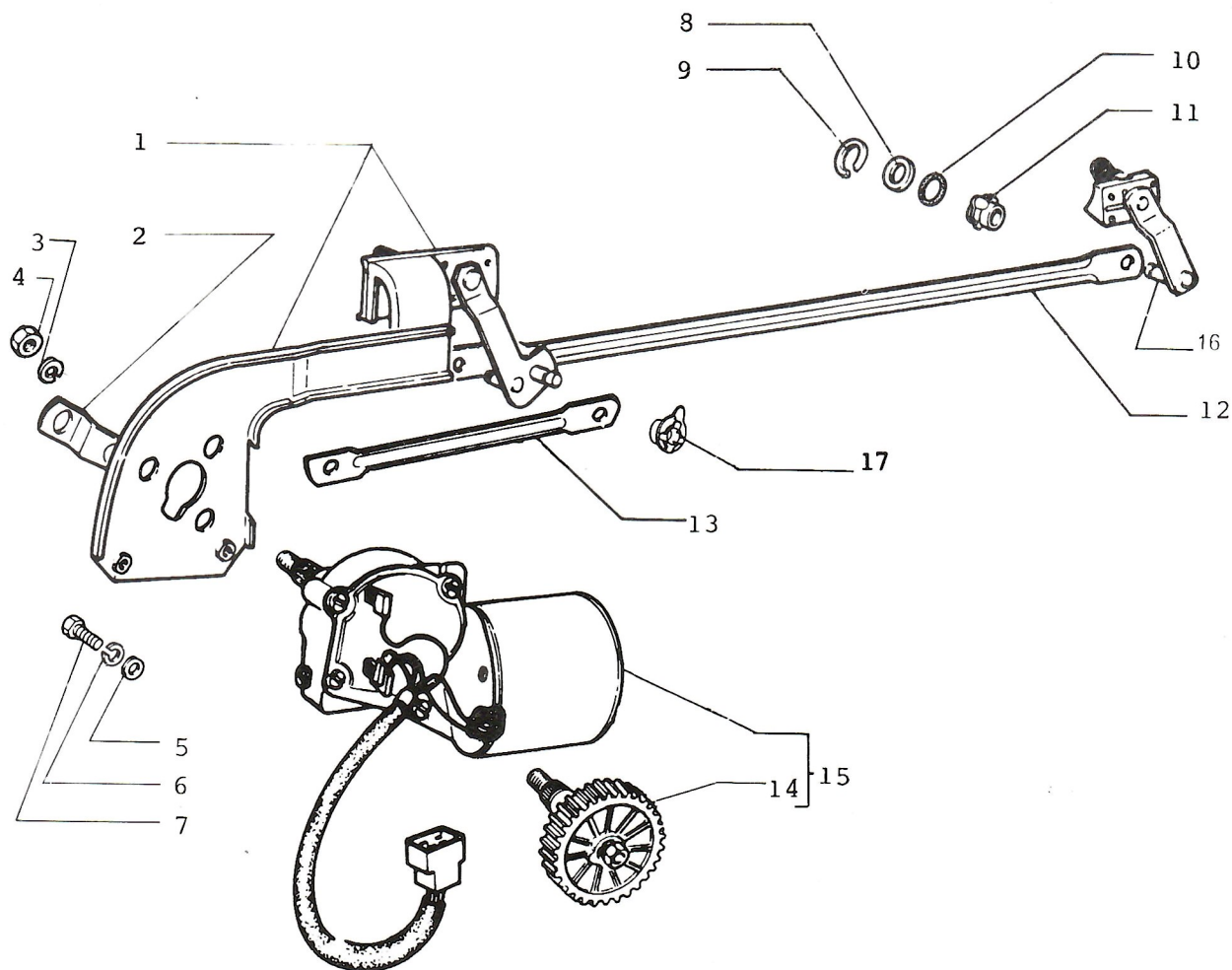


1.	1612386	LINKAGE
	46602371 (27)	LINKAGE (*1)
2.	1612399	LINK - WIPER
3.	1613810	CLIP WIPER ARM
4.	1612401	LINK - WIPER
5.	1018889	GEAR - WIPER MOTOR
6.	1018883	MOTOR - WINDSHIELD WIPER
	1469457	MOTOR - WINDSHIELD WIPER
	46602544	MOTOR - WINDSHIELD WIPER (*2)
7.	1612403	LINK - WIPER
8.	1612392	LINK - WIPER
	46602373 (27)	LINK - WIPER (*1)

NOTE 1: 2 ST TYPE USED FROM CAR No 25854 VIN 383415

NOTE 2: 2 ND TYPE USED FROM CAR No 13127 VIN 431785

2 ND TYPE USED FROM CAR No 13067 VIN 431665 FOR (31)  
(03.18.1988.)



1.	46600315	LINKAGE - WIPER MOTOR
	46602370 (27)	LINKAGE - WIPER MOTOR (*1)
2.	46600318	LINK - WIPER
3.	46600327	WASHER - WIPER MOTOR
4.	46600326	NUT - WIPER MOTOR
5.	46600330	WASHER WIPER MOTOR
6.	46600329	WASHER - WIPER MOTOR
7.	46600328	SCREW - WIPER MOTOR
8.	46600323	WASHER - WIPER ARM
9.	46600322	CLIP - WIPER ARM
10.	46600324	SEAL - WIPER ARM
11.	46600325	BUSHING - WIPER ARM
12.	46600319	LINK - WIPER
	46602448 (27)	LINK - WIPER (*1)
13.	46600317	LINK - WIPER
	46602449 (27)	LINK - WIPER (*1)
14.	46600321	GEAR - WIPER MOTOR
15,	46600320	MOTOR - WINDSHIELD WIPER
	46602543	MOTOR - WINDSHIELD WIPER (*2)
16.	46600316	LINK - WIPER
	46602372 (27)	LINK - WIPER (*1)
17.	46602434 (27)	BUSHING - WIPER ARM (*1)

NOTE 1: 1 ST TYPE USED FROM CAR No 25854 VIN 383415

NOTE 2: 2 ND TYPE USED FROM CAR No 13127 VIN 431785

2 ND TYPE USED FROM CAR No 13067 VIN 431665 FOR (31)  
(03.18.1988.)

FRONT WINDSHIELD WIPER MOTOR

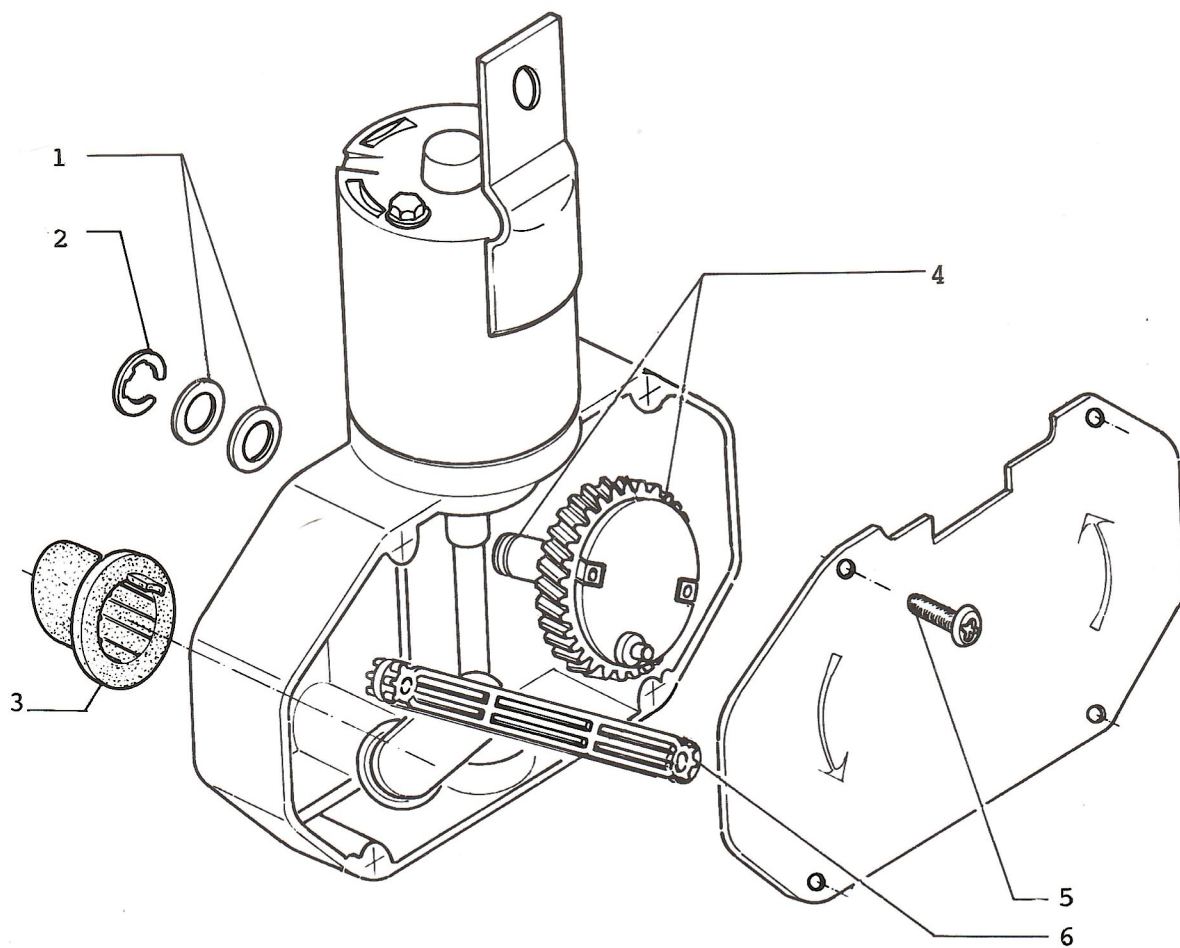
46620603 »R. Č.«

46622792 »R. Č.«

46624927 »R. Č.«

66.65 1

JULY 1989.



REAR WINDSHIELD WIPER MOTOR

46620891

66,66

JULY 1989.

REAR WINDSHIELD WIPER MOTOR 46620891

66.66

- |    |          |                         |
|----|----------|-------------------------|
| 1. | 1618062  | WASHER                  |
| 2. | 11065975 | C-CLIP - WIPER MOTOR    |
| 3. | 1613090  | CASING - WIPER MOTOR    |
| 4. | 1335102  | GEAR - REAR WIPER MOTOR |
| 5. | 13271811 | BOLT - REAR WIPER       |
| 6. | 1613059  | TIE ROD - WIPER MOTOR   |

# RADIO

67.00

5703	SPEAKER-DOOR 5-1/4"(PAIR)
5704	SPEAKER-REAR 4"X 6"(PAIR)
5707	ANTENNA-RADIO
5709	FACEPLATE-RADIO
5719	NOSE PIECE-PLASTIC
5721	KNOB SET-SILVER
5722	CHASSIS-DELUXE AM/FM STEREO CASSETTE
5723	KIT-DELUXE AM/FM STEREO CASSETTE
5724	ADAPTOR-DIN E(NEW VEHICLE OLD RADIO)
5729	EXCHANGE-5722
5730	EXCHANGE-5732
5731	EXTENSION-ANTENNA
5732	CHASSIS-PREMIUM AM/FM STEREO CASSETTE
5733	KIT-PREMIUM AM/FM STEREO CASSETTE
5738	RING-SNAP GRILLE(SPEAKER)
5739	BRIDGE-9 CAR-12 RADIO
5740	BRIDGE-12 CAR-9 RADIO
5741	GRILLE-SPEAKER IP20
5742	GRILLE-SPEAKER IP60
5743	ADAPTOR-ANTENNA ELBOW
5744	RADIO-DELUXE 3RD GENERATION
5745	RADIO-DELUXE KIT 3RD GENERATION
5746	STRAP-RADIO MOUNTING
5747	RADIO-PREMIUM 3RD GENERATION
5748	RADIO-PREMIUM KIT 3RD GENERATION
5754	MANUAL-OWNERS(5722)
5757	KNOB-BALANCE(5722)
5758	KNOB-FADER(5722)
5759	KNOB-TONE(5722)
5760	KNOB-TUNING(5722)
5761	KNOB-VOLUME(5722)
5762	PLATE-TRIM(5722)
5763	PACKAGE-HARDWARE(5722)
5765	STRAP-REAR(5722)
5766	MANUAL-OWNERS(5732)
5769	KNOB-VOLUME(5732)
5770	KNOB-BALANCE(5732)
5771	KNOB-TREBLE(5732)
5772	KNOB-FADER(5732)
5773	SLEEVE-MOUNTING(5732)
5774	ASSEMBLY-WIRE(5732)
5775	BRACKET-REAR(5732)
5776	STRAP-MOUNTING(5732)