

HEATER ASSEMBLY

51,01

JULY 1991.

HEATER ASSEMBLU

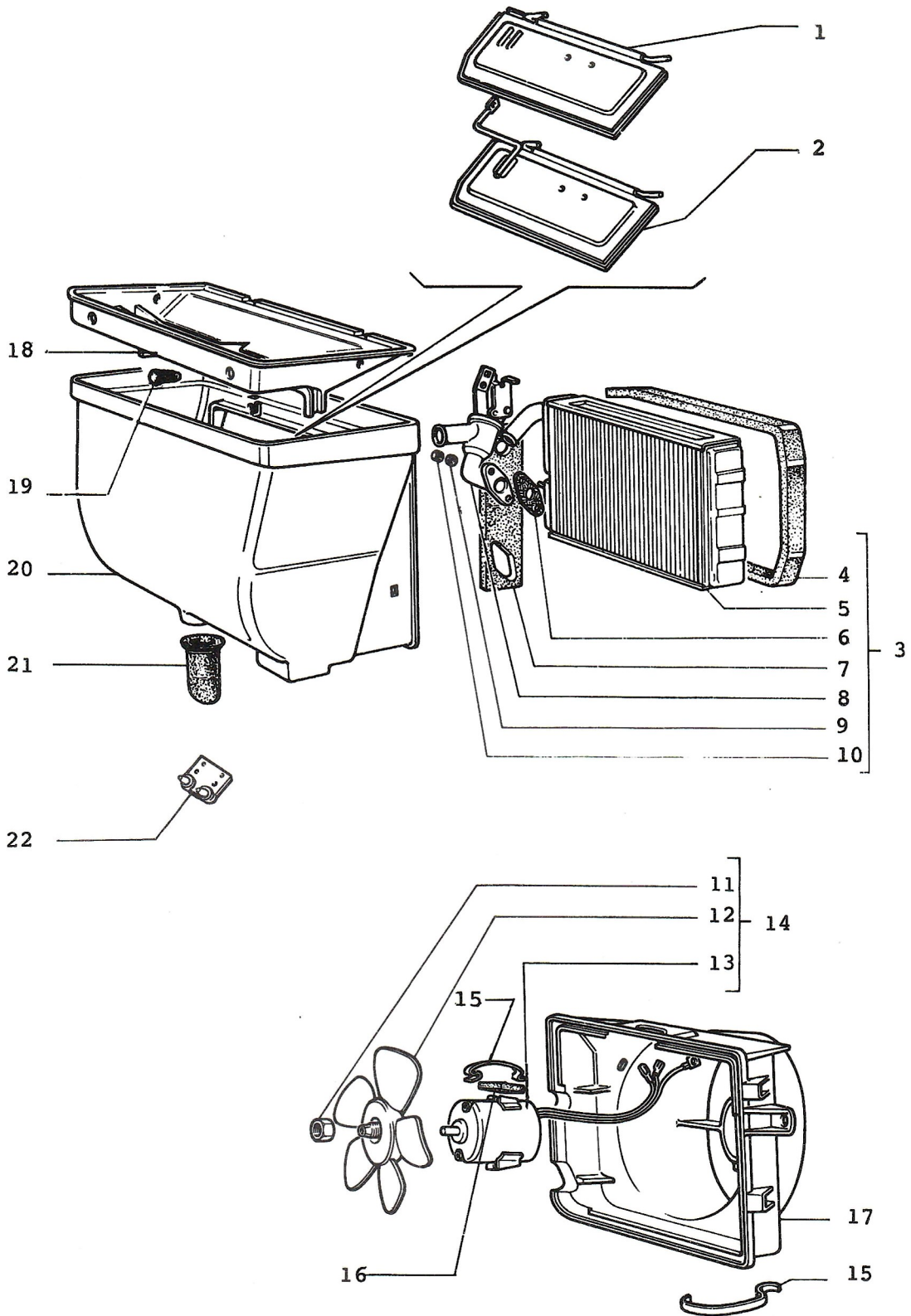
51.01

1.	10516470	WASHER - LOCK
2.	1615514	WEATHERSTRIP - HEATER
3.	46620448	HEATER ASSY
	91703304 (27)	HEATER ASSY
4.	12182190	COLLAR
	12180590	COLLAR
5.	46620583	HOSE - HEATER
	46623778 (27)	HOSE - HEATER
	46634472 (50)	HOSE - HEATER
6.	46620491	CONNECTOR (*1)
7.	4194902	GASKET (*1)
8.	13824411	SCREW (*2)
	10902521	SCREW
9.	46620627	CONNECTOR - HEATER/HOSE
	46641538 (58)	CONNECTOR - HEATER/HOSE
10.	46620584	HOSE - HEATER
	46634473 (50)	HOSE - HEATER
11.	13832101	CLIP - HEATER ASSY (*2)
	15896211	NUT
12.	12598271	WASHER - WINDOW LIFT MECH
13.	10516470	WASHER - LOCK
14.	12624901	WASHER
15.	46622263	SHIELD - HEATER
16.	10902221	BOLT
17.	1615992	WEATHERSTRIP - HEATER BOX
18.	14568380 (50)	CLAMP

NOTE 1: 1 ST CANCELED ITEM FOR (27)

NOTE 2: 13832101 = 15896211 + 12598271

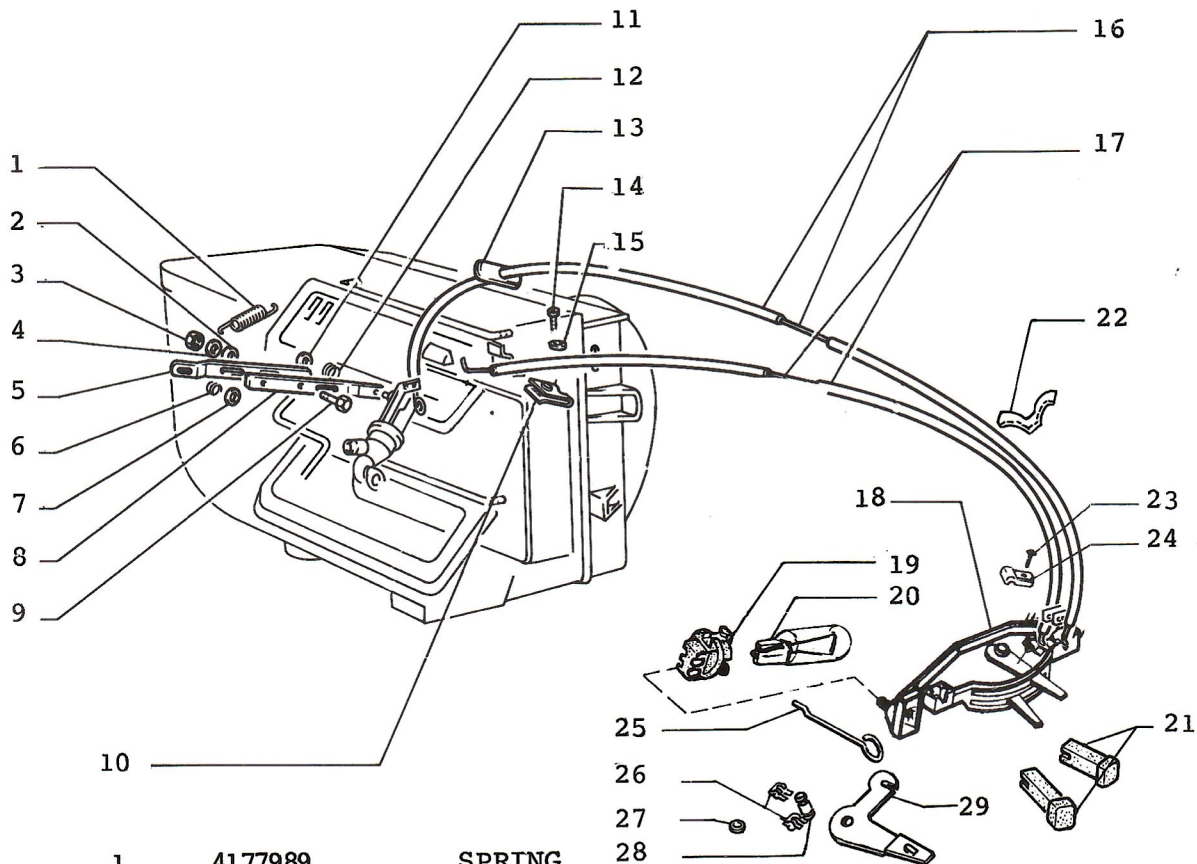
13824411 = 10902521 + 10516470



HEATER COMPONENTS

51.02

1.	4431795	DOOR - HEATER INLET
2.	4431801	COVER - HTR/AIR INLET
3.	1014824	RADIATOR - HEATER CORE ASSY
4.	4302786	WEATHERSTRIP - HEATER CORE
5.	1016712	RADIATOR - HEATER
6.	4176872	GASKET - HEATER VALVE
7.	4257361	SHIELD - HEATER CORE
8.	1611434	VALVE - HEATER
9.	10615470	WASHER - HEATER VALVE
10.	10725911	NUT - HEATER VALVE
11.	4056690	NUT - HEATER MOTOR
12.	4206471	BLADE - FAN
13.	1619954	MOTOR - HEATER
	1018076	MOTOR - HEATER
14.	1619980	MOTOR - HEATER
15.	4105291	CLIP - HEATER CASE
16.	4127208	WASHER - MOTOR HEATER
17.	4206407	CASE - HEATER
18.	4431807	COVER - HEATER BOX
19.	4223945	CLIP
20.	1469289	CASE - HEATER
	1469521 (27)	CASE - HEATER
21.	4193370	OUTLET - HEATER CASE
22.	46621802 (27)	COVER

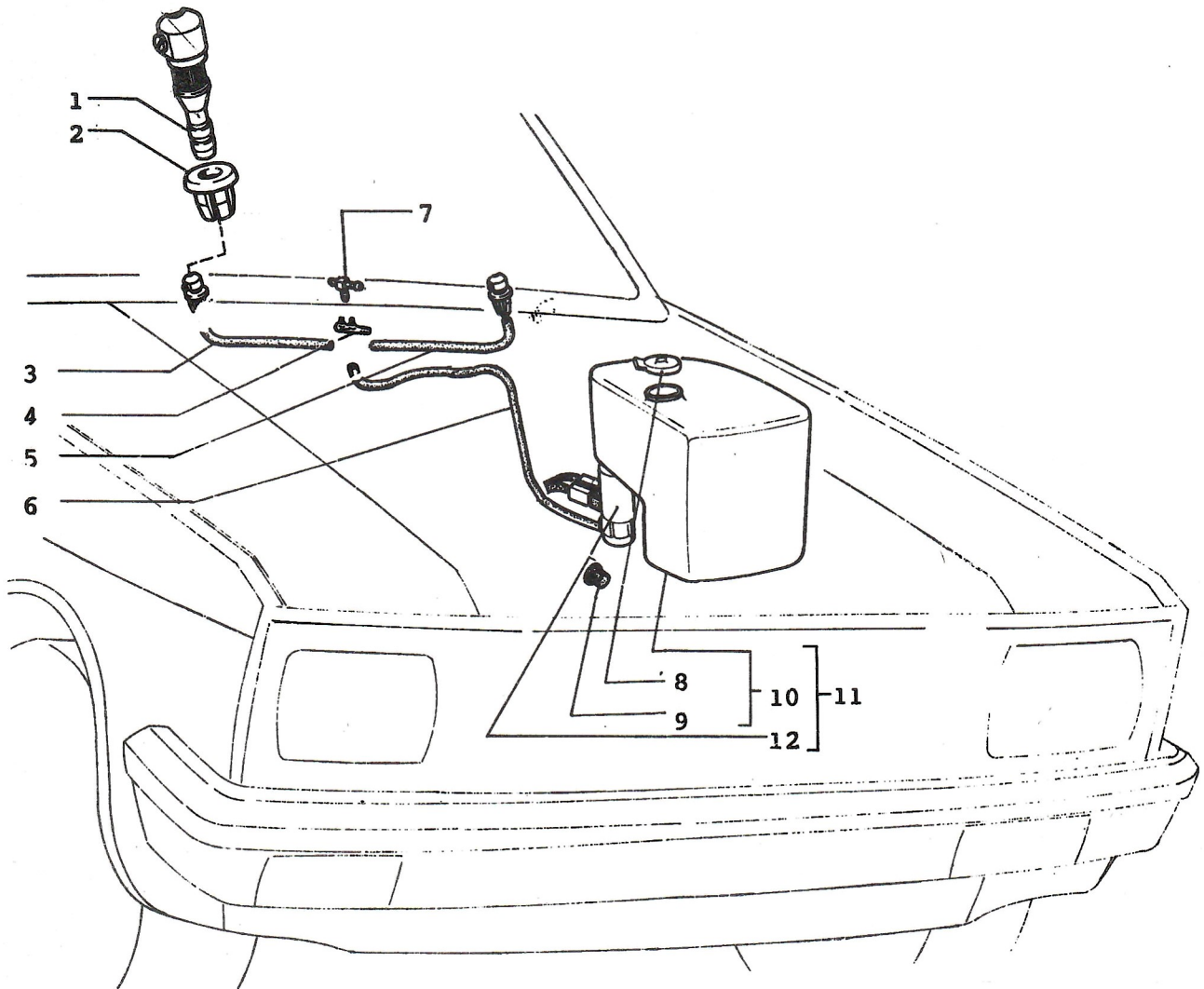


- | | | |
|-----|----------|-------------------------------|
| 1. | 4177989 | SPRING |
| 2. | 10519301 | WASHER |
| 3. | 15896411 | NUT |
| 4. | 11195477 | WASHER - HEATER CONTROL LEVER |
| 5. | 4257634 | LEVER - HEATER CONTROL |
| 6. | 4212738 | PLUG - HEATER CONTROL |
| 7. | 10519301 | WASHER |
| 8. | 4257633 | LEVER - HEATER CONTROL |
| 9. | 10977621 | SCREW - HEATER CONTROL LEVER |
| 10. | 4274532 | RETAINER - HEATER CABLE |
| 11. | 10519301 | WASHER |
| 12. | 4212738 | PLUG - HEATER CONTROL |
| 13. | 4212615 | WEATHERSTRIP - HEATER CABLE |
| 14. | 17671401 | SCREW |
| 15. | 10519301 | WASHER |
| 16. | 1336015 | CABLE - HEATER/CONTROL |
| 17. | 1336016 | CABLE - HEATER/CONTROL |
| 18. | 4431813 | LEVER - HEATER CONTROL ASSY |
| 19. | 4355952 | HOLDER - BULB |
| 20. | 14143790 | BULB - SWITCH PANEL |
| 21. | 4375263 | KNOB - HEATER CONTROL LEVER |
| 22. | 14572880 | CLIP |
| 23. | 4342680 | SCREW |
| 24. | 4342670 | RETAINER |
| 25. | 4429307 | ROD |
| 26. | 4292720 | LOCK/WASHER |
| 27. | 12638101 | WASHER |
| 28. | 4429309 | PIN |
| 29. | 4429308 | LEVER |

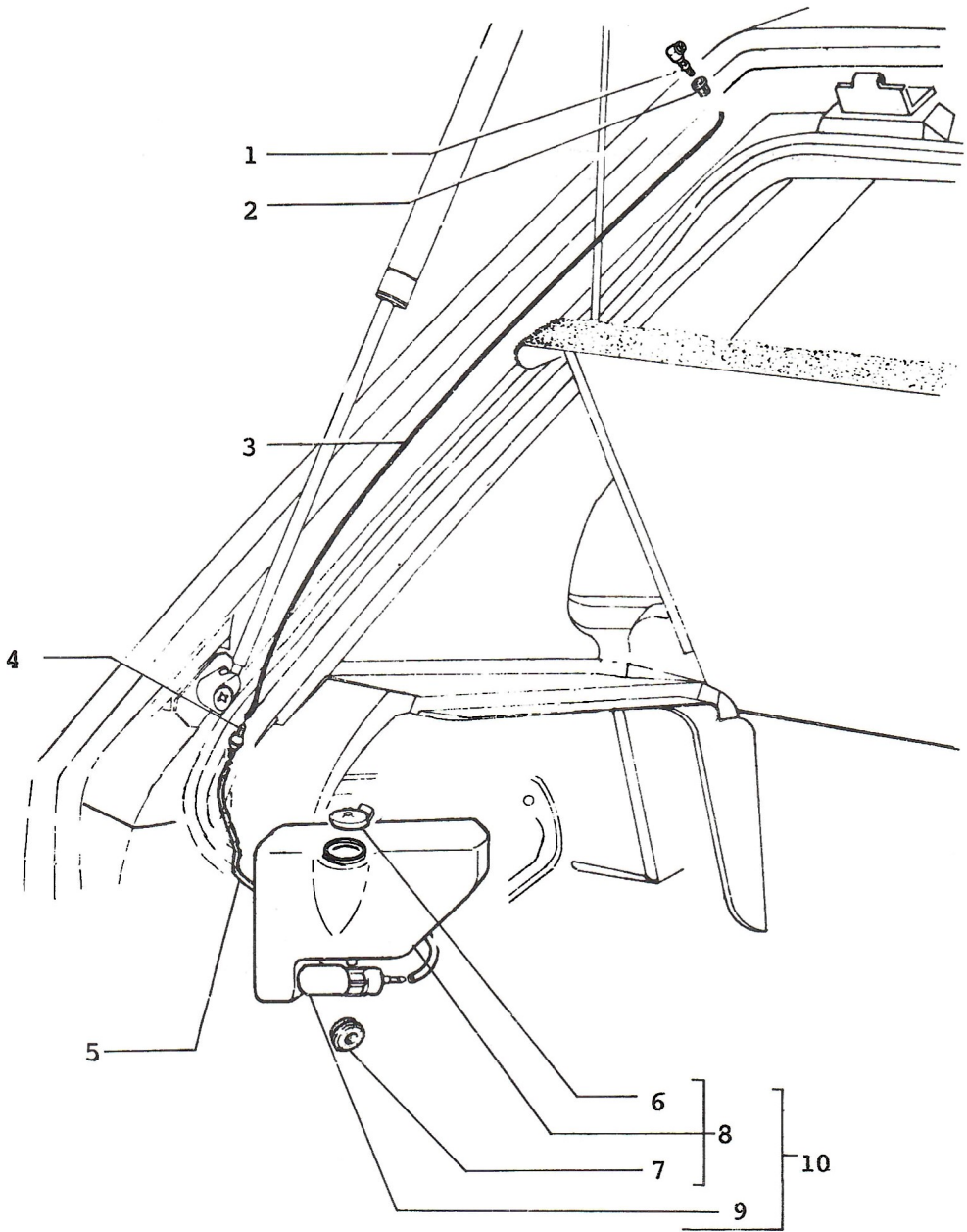
51,03

VENTILATION AND HEATING CONTROLS

JULY 1989.



- | | | |
|-----|---------------|------------------------------|
| 1. | 1616842 | JET - WINDSHIELD - WASHER |
| 2. | 1616843 | CLIP - WINDSHIELD WASHER JET |
| 3. | 4429945 | HOSE - WINDSHIELD WASHER |
| 4. | 14573080 | FITTING - "T" |
| 5. | 4429944 | HOSE - WINDSHIELD WASHER |
| 6. | 4429943 | HOSE - WINDSHIELD WASHER |
| 7. | 46622990 (27) | CONNECTION |
| | 46629958 (50) | CONNECTION |
| 8. | 46620674 | CAP - WXPANSION TANK |
| 9. | 1612711 | PLUG - WASHER RESERVOIR |
| 10. | 46620433 | RESERVOIR - WIND/WASHER |
| 11. | 46620432 | RESERVOIR - WIND/WASHER ASSY |
| 12. | 1612713 | PUMP - WIND/WASHER |



REAR WINDSHIELD WASHER SYSTEM

51.08

- | | | |
|-----|---------------|------------------------------|
| 1. | 1616842 | JET - WINDSHIELD - MASHER |
| 2. | 1616843 | CLIP - WINDSHIELD WASHER JET |
| 3. | 4444263 | TUBE - REAR W/WASHER |
| 4. | 1458318Q | CONNECTOR - W/WASHER LINE |
| 5. | 4444262 | TUBE - REAR W/WASHER |
| 6. | 46620674 | CAP - EXPANSION TANK |
| 7. | 1612711 | PLUG - WASHER RESERVOIR |
| 8. | 46620227 | RESERVOIR - WASHER REAR |
| | 46621612 (27) | RESERVOIR - WASHER REAR |
| 9. | 46620229 | PUMP - WIND/WASHER |
| 10. | 46620226 | RESERVOIR - WASHER REAR/ASSY |
| | 46621611 (27) | RESERVOIR - WASHER REAR/ASSY |

A/C

51.09/1

5007	CASE-EVAPORATOR TOP IP20
5008	CASE-EVAPORATOR BOTTOM IP20
5009	VALVE-EXPANSION
5010	CLAMP-BULB(EXPANSION VALVE)
5017	CONSOLE-A/C IP20
5018	LOUVER-CONSOLE ROUND
5019	ASSY-SWITCH/BEZEL
5020	KNOB-SWITCH
5021	LOUVER-A/C CONSOLE
5022	SWITCH-BLOWER
5023	SWITCH-THERMOSTAT(SLIDE)
5026	FILTER-DRIER/RECEIVER
5027	ASSY-FAN
5028	MOTOR-FAN(CONDENSER)
5029	BLADE-FAN(CONDENSER)
5030	SHROUD-FAN
5031	ASSY-IDLE UP
5032	ASSY-MOTOR VACUUM
5033	ASSY-TUBE #6(EXP. VALVE-> EVAP)
5034	ASSY-TUBE #6(W/O SWITCHES)
5035	ASSY-TUBE #6(DRIER-> CONDENSER)
5036	ASSY-HOSE #8(CONDENSER-> COMPRESSOR)
5037	ASSY-HOSE #10
5038	INSULATION-FIBER
5039	KIT-COMPRESSOR MOUNTING
5043	PACKAGE-RELAY
5044	SOLENOID-VACUUM
5045	RELAY-1P/2T
5046	RELAY-2P/2T
5047	SWITCH-FAN HIGH PRESSURE
5048	SWITCH-CUT OUT (HI/LOW)
5049	TAPE-PRESTITE(PKG3)
5050	GROMMET-FIREWALL
5051	"O" RING-#6 PKG(20)
5052	"O" RING-#8 PKG(20)
5053	"O" RING-#10 PKG(20)
5054	CASE-EVAPORATOR TOP IP60
5055	CASE-EVAPORATOR BOTTOM IP60
5056	CONSOLE-A/C IP60
5057	ADAPTOR-HEATER PLENUM
5058	PACKAGE-HARDWARE
5059	PACKAGE-HARDWARE
5060	BRACKET-MOUNTING
5061	BRACKET-MOUNTING
5062	SKIRT-MODESTY IP20
5064	SKIRT-MODESTY IP60
5066	SCREW-EVAP CASE IP20
5067	SCREW-EVAP CASE IP60
5068	SCREW-CONSOLE IP20
5069	SCREW-CONSOLE IP60
5070	EVAPORATOR ASSY IP60
5071	BRACKET-EVAP/MOUNT
5072	PLATE-BLOCK OFF

A/C

51.09/2

5073	PACKAGE-HARDWARE
5074	BRACKET-RECEIVER DRIER
5075	BRACKET-RECEIVER/DRIER
5076	PACKAGE-DRAIN HOSE
5077	RING-"O" COMPRESSOR
5078	BOX-THERMOSTAT CONTROL(8 PIN)
5079	BELT-DRIVE COMPRESSOR (3 1 IN.)
5080	CONDENSER
5081	BRACKET-CONDENSER
5082	CONDENSER-ASSEMBLY
5083	ASSY-TUBE#6(2ND GENERATION)
5084	ASSY-HOSE#8(2ND GENERATION)
5085	HARNES-FAN ADAPTOR(PIGTAIL-SPADED TERM)
5086	CLUTCH-COMPRESSOR
5087	ASHTRAY-BLACK
5088	KIT-ASHTAY INSTALL
5089	DECAL-DEFROSTER
5090	LABEL-A/C DATA
5001	CONDITIONER-AIR(IP20)
5002	CONDITIONER-AIR(IP60)
5003	COMPRESSOR W/CLUTCH
5004	EVAPORATOR ASSY IP20
5005	BOX-THERMOSTAT CONTROL(9 PIN)
5006	PROBE-THERMISTOR