

## BRAKE PEDAL ASSEMBLY

31.01

1.	4358920	SUPPORT (*1)
	4299196	SUPPORT (*2)
	46625627	SUPPORT (*3)
2.	4386905	GASKET - SUPPORT/BRAKE PEDAL
3.	12647201	WASHER
4.	10516670	WASHER - LOCK
5.	16100811	NUT
6.	12638601	WASHER
7.	10734301	PIN - COTTER/BRAKE PEDAL
8.	1619861	PEDAL - BRAKE
	46623471	PEDAL - BRAKE (*3)
	46625982	PEDAL - BRAKE (*4)
9.	4249840	SPRING - RETURN/BRAKE PEDAL
10.	4238373	PIN - BRAKE PEDAL
11.	17670101	SCREW - BRAKE PEDAL SUPPORT
	15688001	SCREW - BRAKE PEDAL SUPPORT
12.	4103528	LOCKTAB - BRAKE PEDAL SUPPORT
13.	4144275	PAD - PEDAL

NOTE 1: 1 ST TYPE USED UP TO CAR No 52095

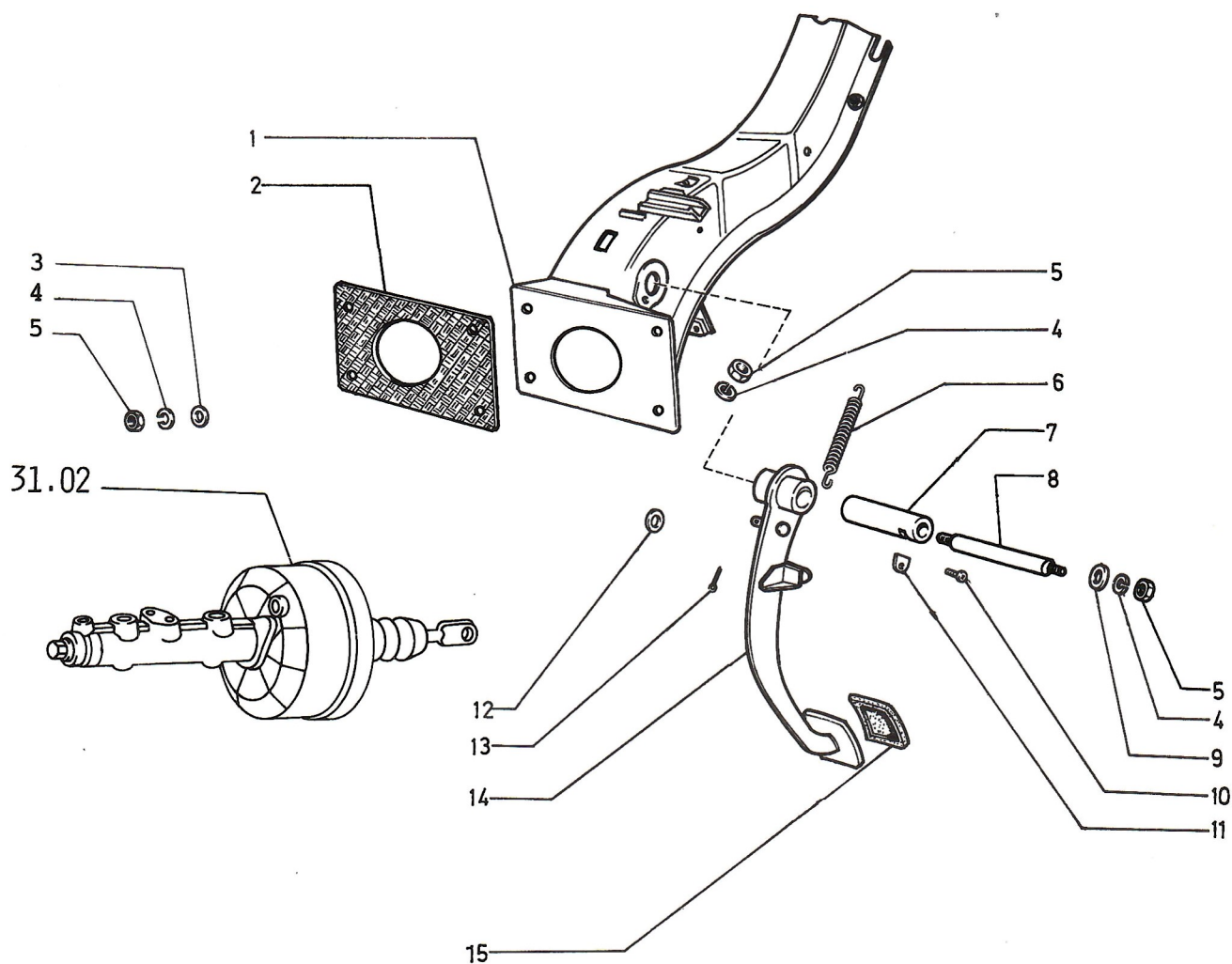
NOTE 2: 2 ND TYPE USED FROM CAR No 52096

NOTE 3: 3 RD TYPE USED FROM CAR No 29080 VIN 386291

FOR ALL MODELS PRODUCED AFTER 06.22.1987.

NOTE 4: 3 RD TYPE USED FROM FOR ALL MODELS

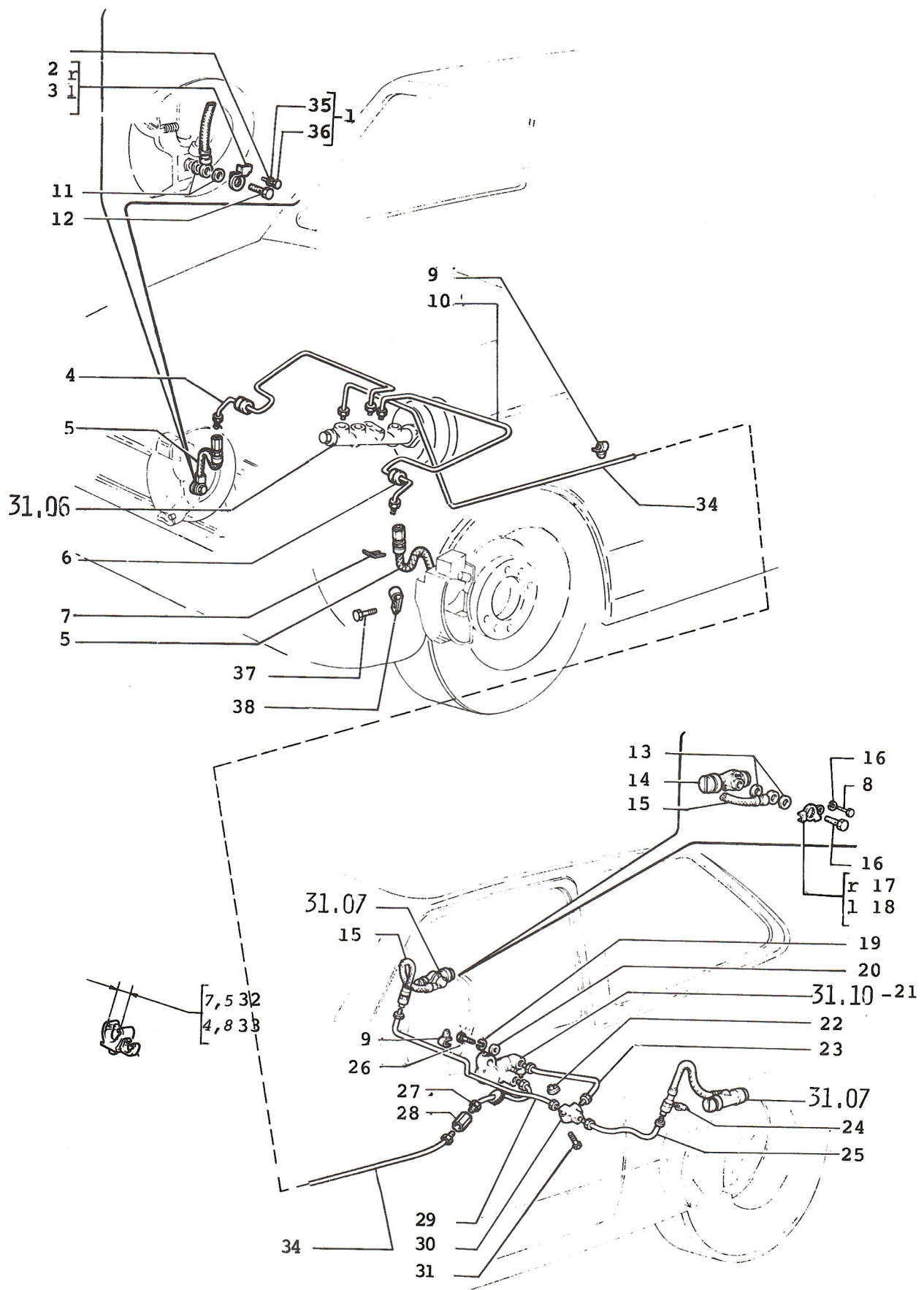
PRODUCED AFTER 06.07.1988.



### **BRAKE PEDAL ASSEMBLY**

**31.01/1**

1.	46633489 (50)	SUPPORT - BRAKE PEDAL
2.	46619262 (50)	GASKET - SUPPORT/BRAKE PEDAL
3.	14496501	WASHER
4.	10516670	WASHER LOCK
5.	16100811	NUT M8
6.	4249840	SPRING - RETURN/BRAKE PEDAL
7.	4238373	PIN - BRAKE PEDAL
8.	46633852 (50)	SHAFT
9.	12647001	WASHER
10.	15688001	SCREW
11.	4103528	LOCKTAB - BRAKE PEDAL SUPPORT
12.	12638601	WASHER
13.	10734301	PIN - COTTER
14.	46633851 (50)	PEDAL - BRAKE
15.	46634718 (50)	PAD - PEDAL





## BRAKE HYDRAULIC SYSTEM

31.02

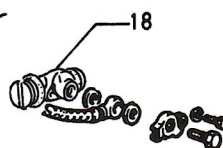
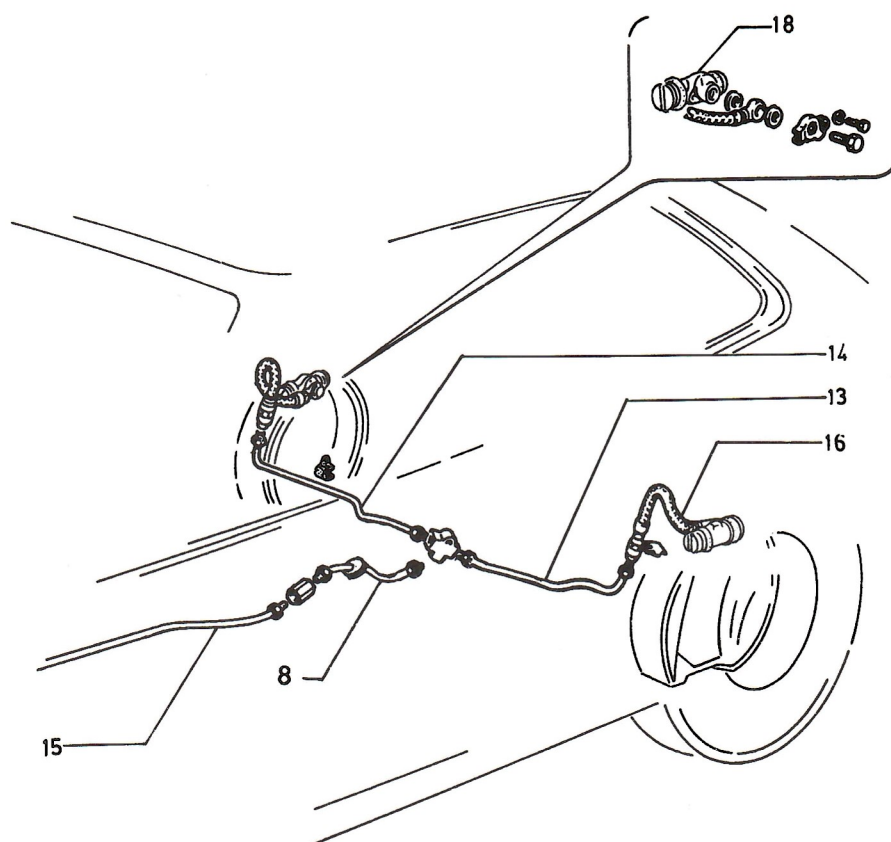
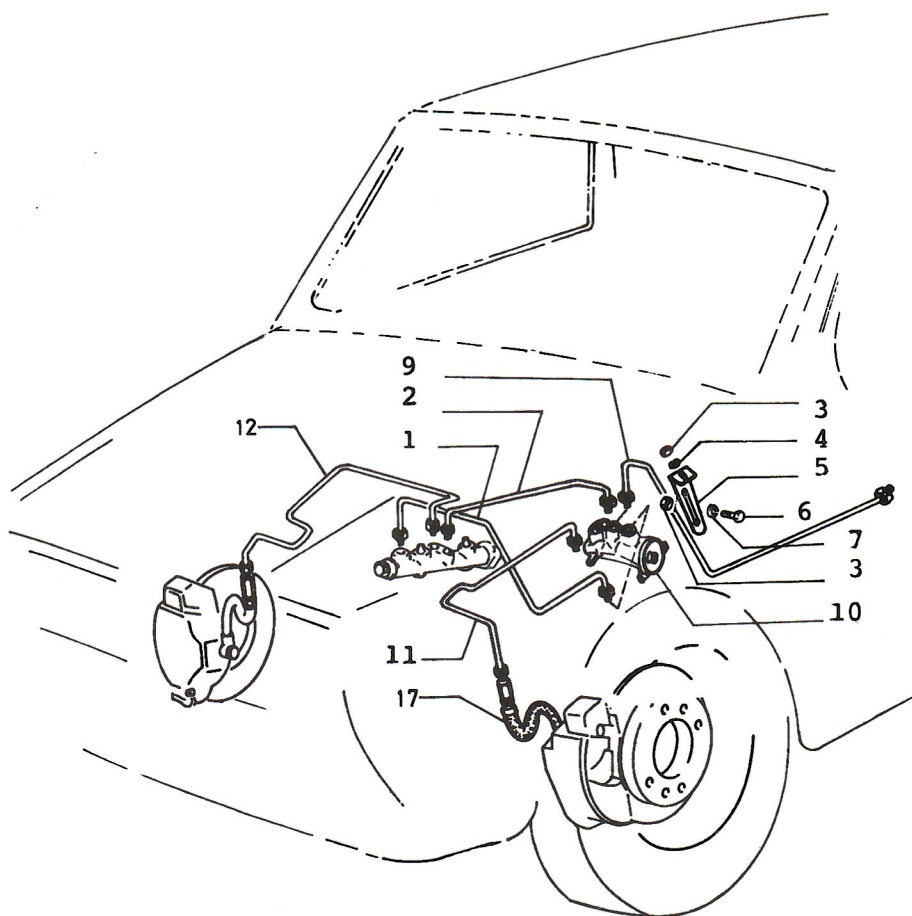
1. 13824011 SCREW
2. 4219736 PLATE LOCK R/H
3. 4219737 PLATE LOCK L/H
4. 1619326 ETNE - BRAKE R/H
- 46621618 LINE - BRAKE R/H (ARMCO) (\*1)
- 46623059 LINE - BRAKE R/H (FULTON ROHR) (\*2)
- 46623140 (27) LINE - BRAKE R/H (FULTON ROHR) (\*3)
- 46622797 (27) LINE - BRAKE (ARMCO) (\*3)
- 46623744 (27,42,44) LINE - BRAKE R/H (ARMCO) (\*4)
- 46623747 (27,42,44) LINE - BRAKE R/H (FULTON ROHR) (\*4)
5. 1014105 HOSE - FRONT BRAKE
- 46622347 (44) HOSE - FRONT BRAKE
6. 46620587 LINE - BRAKE
7. 994922 RETAINER - BRAKE LINE
8. 10979421 SCREW
9. 14573280 CLIP - BRAKE LINE
10. 1619327 LINE - BRAKE L/H
- 46621619 LINE - BRAKE (ARMCO) (\*1)
- 46623044 LINE - BRAKE (FULTON ROHR) (\*2)
- 46623746 (27,42,44) LINE - BRAKE L/H (ARMCO) (\*4)
- 46623745 (27,42,44) LINE - BRAKE L/H (FULTON ROHR) (\*4)
11. 10284460 WASHER - CONNECTION/BRAKE LINE
12. 4117215 SCREW - BRAKE LINE CONNECTION
13. 809065 WASHER - BRAKE CYLINDER
14. 4404483 CYLINDER - BRAKE
15. 1014106 HOSE - REAR BRAKE
16. 809064 SCREW - BRAKE CYLINDER
17. 4256384 PLATE - LOCK/WHEEL CYL R/H
18. 4256385 PLATE - LOCK/WHEEL CYL L/H
19. 10516670 WASHER - LOCK
20. 10519601 WASHER
21. 4379876 COMPENSATOR - BRAKE ACTION
22. 14203780 CLIP - BRAKE LINE
23. 4477655 LINE - BRAKE (ARMCO) (\*1)
- 46623031 LINE - BRAKE (FULTON ROHR) (\*2)
24. 994922 RETAINER - BRAKE LINE
25. 4477649 LINE - BRAKE (ARMCO) (\*1)
- 46623027 LINE - BRAKE (FULTON ROHR) (\*2)
26. 13825821 SCREW
27. 46620729 LINE - BRAKE
- 46621620 LINE - BRAKE (ARMCO) (\*1)
- 46623042 LINE - BRAKE (FULTON ROHR) (\*2)
28. 4078568 CONNECTION - BRAKE LINE
29. 4477643 LINE - BRAKE (ARMCO) (\*1)
- 46623025 LINE - BRAKE (FULTON ROHR) (\*2)
30. 4077589 CONNECTION - BRAKE LINE
31. 15925101 SCREW
32. 14575480 PROTECTION
33. 14575380 PROTECTION
34. 46620666 LINE - BRAKE (ARMCO) (\*1)
- 46623037 LINE - BRAKE (FULTON ROHR) (\*2)
35. 10516471 WASHER - LOCK
36. 10979411 SCREW - WINDOW REGULATOR
37. 14289701 (44) SCREW (M6x14)
38. 10418800 (44) CLAMP

NOTE 1: 1 ST TYPE USED UP TO CAR No 56055

NOTE 2: 2 ND TYPE USED FROM CAR No 56056 UP TO No 83749

NOTE 3: 3 RD TYPE USED FROM CAR No 83750

NOTE 4: 4 TH TYPE USED FROM CAR No 3037 AND BODY VIN NUMBER 360024 FOR ALL MODELS  
PRODUCED AFTER JANUARY 28.01.1987.

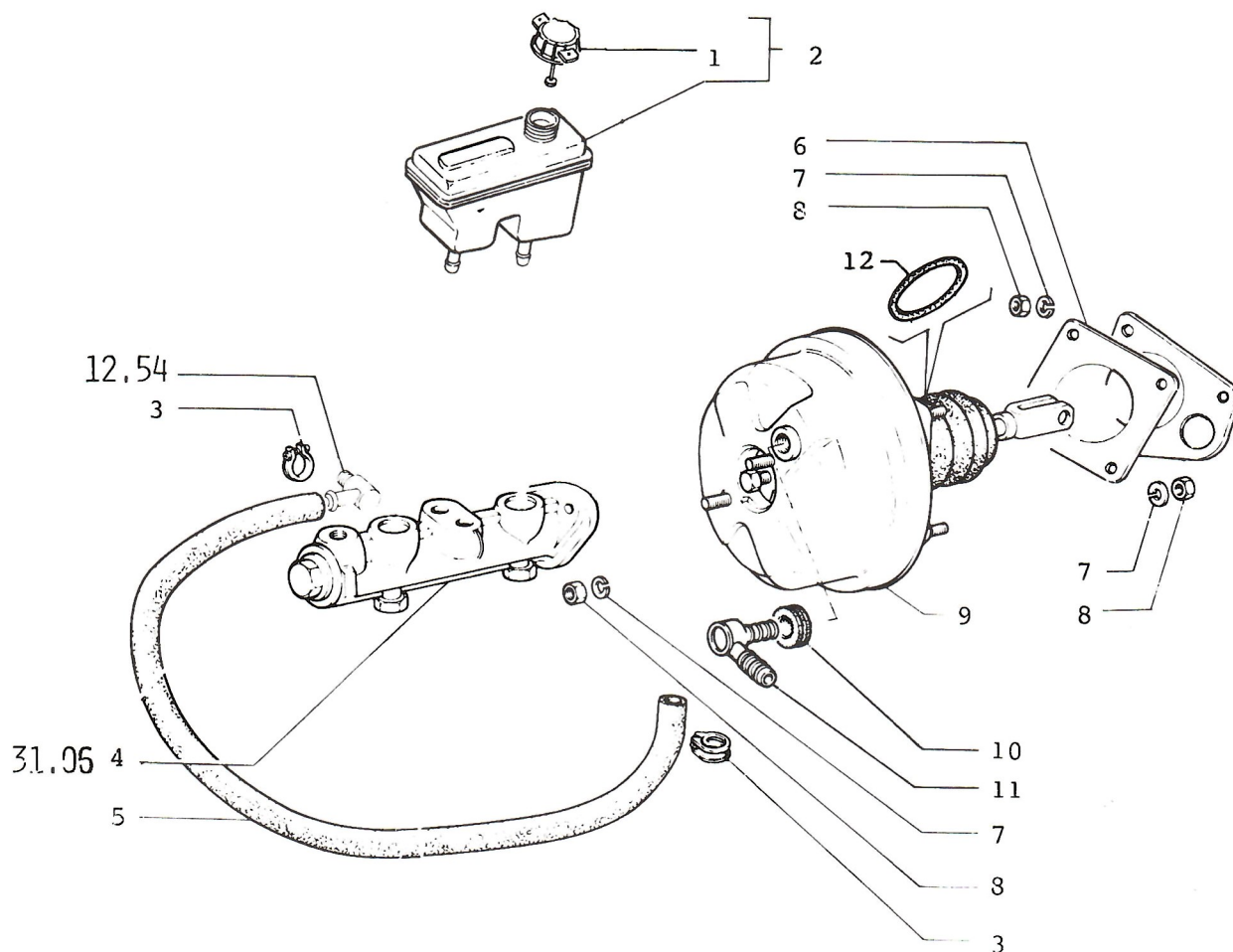


## BRAKE HYDRAULIC SYSTEM

31.02/1

- |     |                     |                                |
|-----|---------------------|--------------------------------|
| 1.  | 46626013 (31,58)    | LINE - BRAKE (ARMCO)           |
|     | 46626015 (31,58)    | LINE - BRAKE (FULTON ROHR)     |
|     | 46633994 (50)       | LINE - BRAKE                   |
|     | 46633990 (50)       | LINE - BRAKE                   |
| 2.  | 46626017 (31,58)    | LINE - BRAKE (ARMCO)           |
|     | 46626019 (31,58)    | LINE - BRAKE (FULTON ROHR)     |
|     | 46633992 (50)       | LINE - BRAKE                   |
|     | 46633996 (50)       | LINE - BRAKE                   |
| 3.  | 16100811 (31,58)    | NUT                            |
| 4.  | 10516670 (31,58)    | WASHER - LOCK                  |
|     | 14496507 (50)       | WASHER - LOCK                  |
| 5.  | 46620361 (31,58)    | SUPPORT - PRESSURE REGULATOR   |
|     | 46634993 (50)       | SUPPORT - PRESSURE REGULATOR   |
| 6.  | 16044611 (31,58)    | SCREW                          |
| 7.  | 10516607 (31,58)    | WASHER                         |
| 8.  | 46626001 (31,58,50) | LINE - BRAKE (ARMCO)           |
|     | 46626003 (31,58,50) | LINE - BRAKE (FULTON ROHR)     |
| 9.  | 46625997 (31,58)    | LINE - BRAKE (ARMCO)           |
|     | 46625999 (31,58)    | LINE - BRAKE (FULTON ROHR)     |
| 10. | 46625991 (31,58)    | BY PASS - PRESSURE REGULATOR   |
|     | 46634721 (50)       | BY PASS - PRESSURE REGULATOR   |
| 11. | 46625995 (31,58)    | LINE - BRAKE L/H (ARMCO)       |
|     | 46625996 (31,58)    | LINE - BRAKE L/H (FULTON ROHR) |
|     | 46636126 (50)       | LINE - BRAKE L/H               |
|     | 46633998 (50)       | LINE - BRAKE L/H               |
| 12. | 46623744 (31,58)    | LINE - BRAKE R/H (ARMCO)       |
|     | 46623747 (31,58)    | LINE - BRAKE R/H (FULTON ROHR) |
|     | 46634000 (50)       | LINE - BRAKE R/H               |
|     | 46634002 (50)       | LINE - BRAKE R/H               |
| 13. | 46623027            | LINE - BRAKE                   |
| 14. | 46623025            | LINE - BRAKE                   |
| 15. | 46633986 (50)       | LINE - BRAKE                   |
|     | 46633988 (50)       | LINE - BRAKE                   |
| 16. | 1014106             | HOSE - REAR BRAKE              |
| 17. | 46630354 (50)       | HOSE - FRONT BRAKE             |
| 18. | 5958301 (50)        | CYLINDER-REAR BRAKE            |

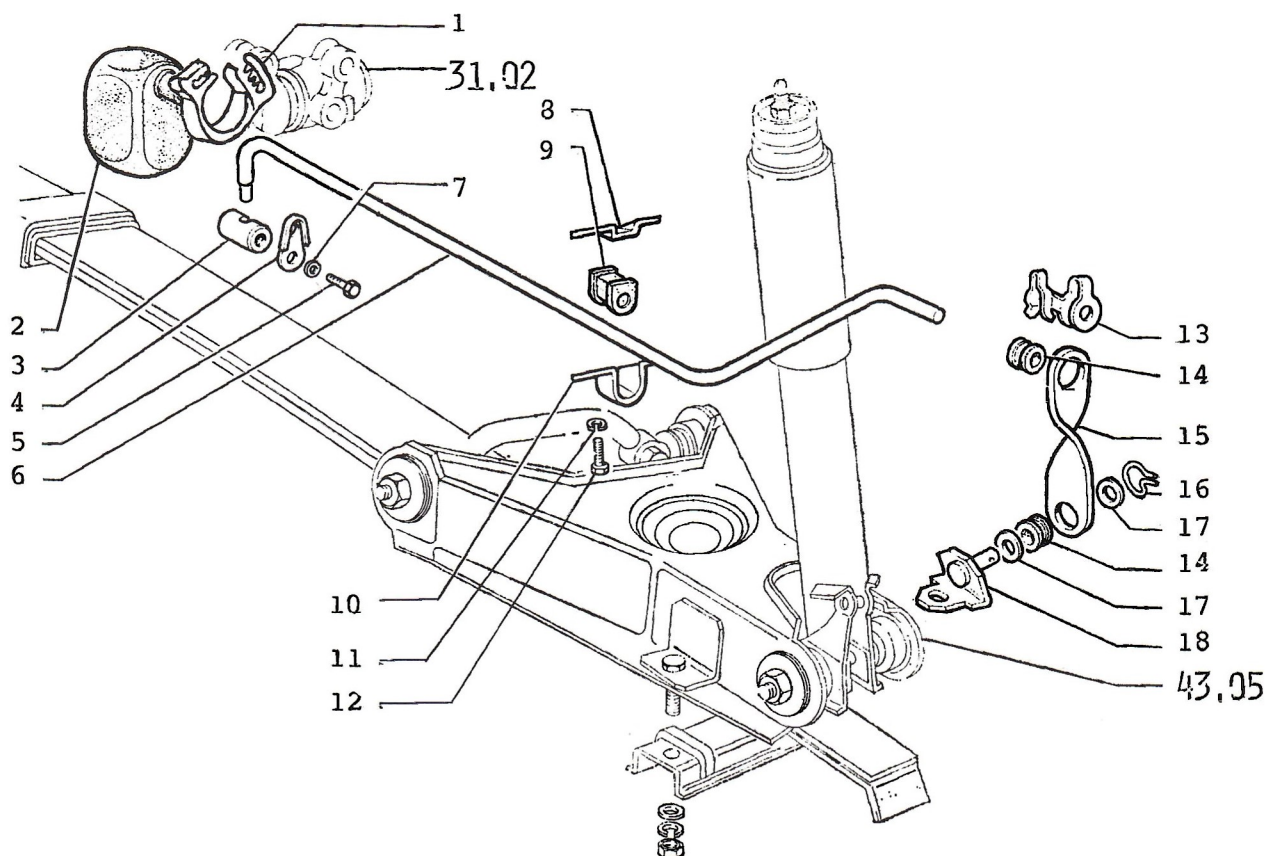




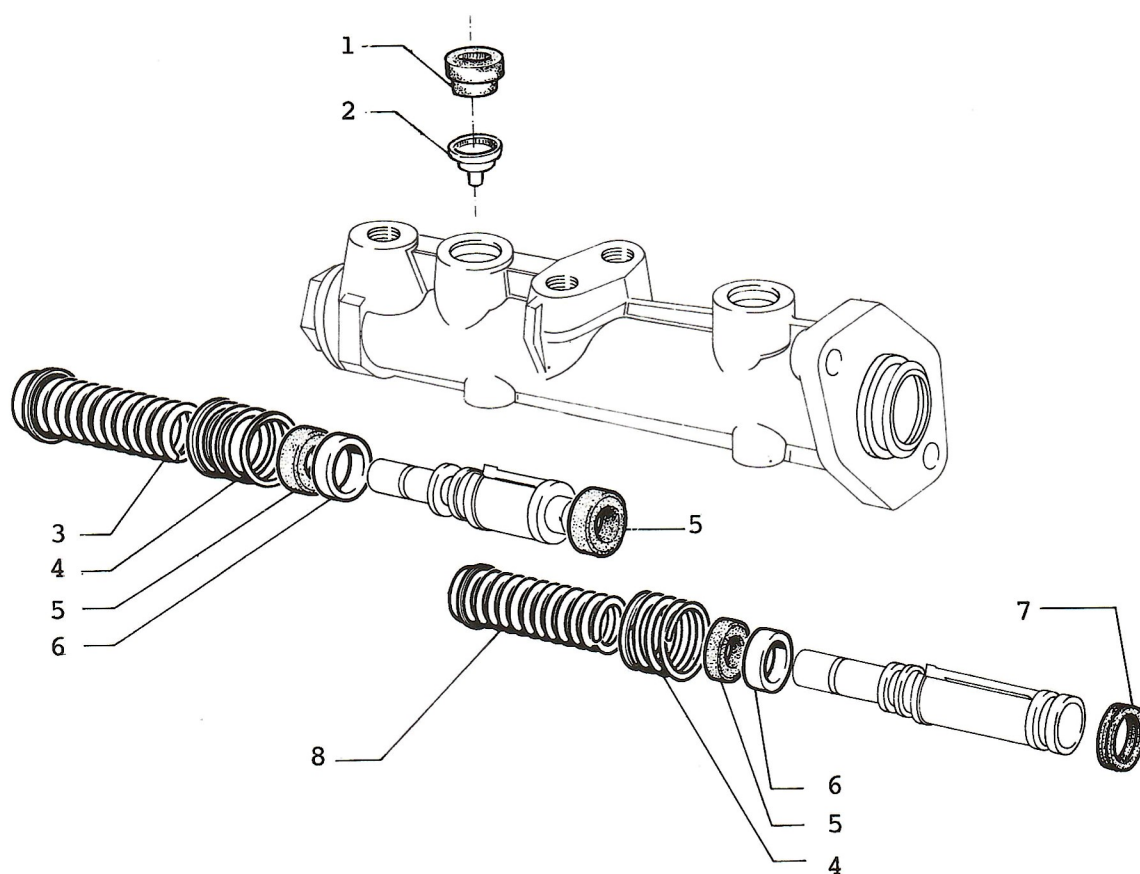
1.	4379798	CAP - RESERVOIR/BRAKE
	46619103 (50)	CAP - RESERVOIR/BRAKE
2.	4429395	RESERVOIR - MASTER CYLINDER
	46623699	RESERVOIR - MASTER CYLINDER
	46625694	RESERVOIR - MASTER CYLINDER
	46636598 (50)	RESERVOIR
3.	12173690	CLAMP - HOSE
	12182790	CLAMP - HOSE
	13000490 (58,50)	CLAMP - HOSE
4.	4372841	CYLINDER - BRAKE MASTER
	46632884 (50)	CYLINDER - BRAKE MASTER
5.	14205180	HOSE (Ø 11 x 19 x 350)
	14205080	HOSE (Ø 11 x 19 x 350)
	14205380 (58)	HOSE (Ø 11 x 19 x 425)
	14205460 (50)	HOSE (Ø 11 x 19 x 425)
6.	1619208	PLATE (*1)
	46623276	PLATE (*2)
7.	10516670	WASHER - LOCK
8.	16100811	NUT
9.	46620745	SERVO - BRAKE
	1423502 (50)	SERVO - BRAKE
10.	4323401	SEAL
11.	4323521	CONNECTION
	4382055 (50)	CONNECTION
12.	46622083	SEAL
	46622523	SEAL

NOTE 1: 1 ST TYPE USED UP TO CAR No 52095

NOTE 2: 2 ND TYPE USED FROM CAR No 52096



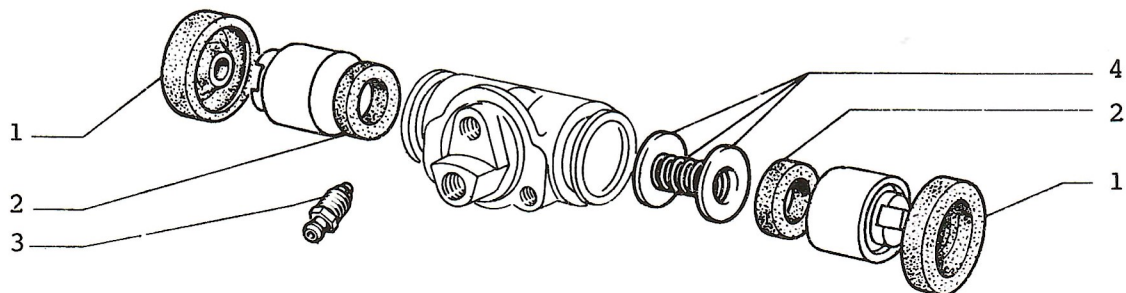
- |     |          |                                 |
|-----|----------|---------------------------------|
| 1.  | 4381511  | COLLAR - BOOT/BRAKE COMPENSATOR |
| 2.  | 5954608  | BOOT - BRAKE COMPENSATOR        |
| 3.  | 4248736  | ROLLER - BRAKE COMPENSATOR      |
| 4.  | 4248747  | PLATE - BRAKE COMPENSATOR       |
| 5.  | 10977521 | SCREW - BRAKE COMPENSATOR       |
| 6.  | 4248737  | ROD - BRAKE COMPENSATOR LEVEL   |
| 7.  | 11195470 | WASHER                          |
| 8.  | 4248740  | SUPPORT - BRAKE COMPENSATOR     |
| 9.  | 4332012  | BUSHING - BRAKE COMPENSATOR     |
| 10. | 4248739  | BRACKET - BRAKE COMPENSATOR     |
| 11. | 10516471 | WASHER - LOCK                   |
| 12. | 10902211 | SCREW                           |
| 13. | 4255438  | CLIP - BRAKE COMPENSATOR        |
| 14. | 4366271  | BUSHING - BRAKE COMPENSATOR     |
| 15. | 4248742  | LINK - BRAKE COMPENSATOR        |
| 16. | 4058800  | CLIP - BRAKE COMPENSATOR        |
| 17. | 4058802  | WASHER - BRAKE COMPENSATOR      |
| 18. | 4375415  | SUPPORT - BRAKE COMPENSATOR     |



$$S-1334115 = 5(n \times 3) + 7(n \times 1) + [1(n \times 4) + 2(n \times 4)] \text{ (PGR 31.07)}$$

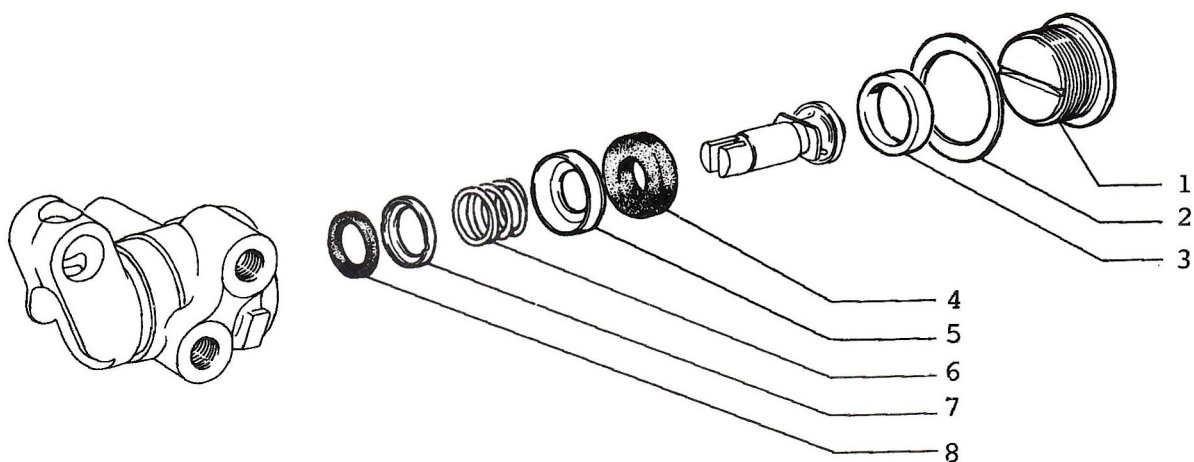
- |    |         |                           |
|----|---------|---------------------------|
| 1. | 4340338 | RUBBER BUSH               |
| 2. | 791329  | PLUG - MASTER CYLINDER    |
| 3. | 4230338 | SPRING - MASTER CYLINDER  |
| 4. | 4241218 | SPRING - M/CYLINDER       |
| 5. | 4115451 | SEAL - MASTER CYLINDER    |
| 6. | 4185496 | BUSHING - MASTER CYLINDER |
| 7. | 4270741 | SEAL - MASTER CYLINDER    |
| 8. | 4362476 | SPRING - MASTER CYLINDER  |
| 9. | 1334115 | KIT - MASTER & WHEEL CYL  |





S - 1334115 =  $\left[ 5 (nx3) + 7 (nx1) (PGR. 31.06) \right] + 1 (nx4) + 2 (nx4)$

- |    |         |                              |
|----|---------|------------------------------|
| 1. | 4277194 | SEAL - WHEEL CYLINDER        |
| 2. | 4404597 | SEAL - WHEEL CYLINDER        |
| 3. | 4230797 | VALVE - BLEED/WHEEL - CYL    |
| 4. | 4404601 | SPRING - WASHERS - WHEEL/CYL |
| 5. | 1334115 | KIT - MASTER & WHEEL CYL     |



**BRAKE ACTION COMPENSATOR**

**4379876**

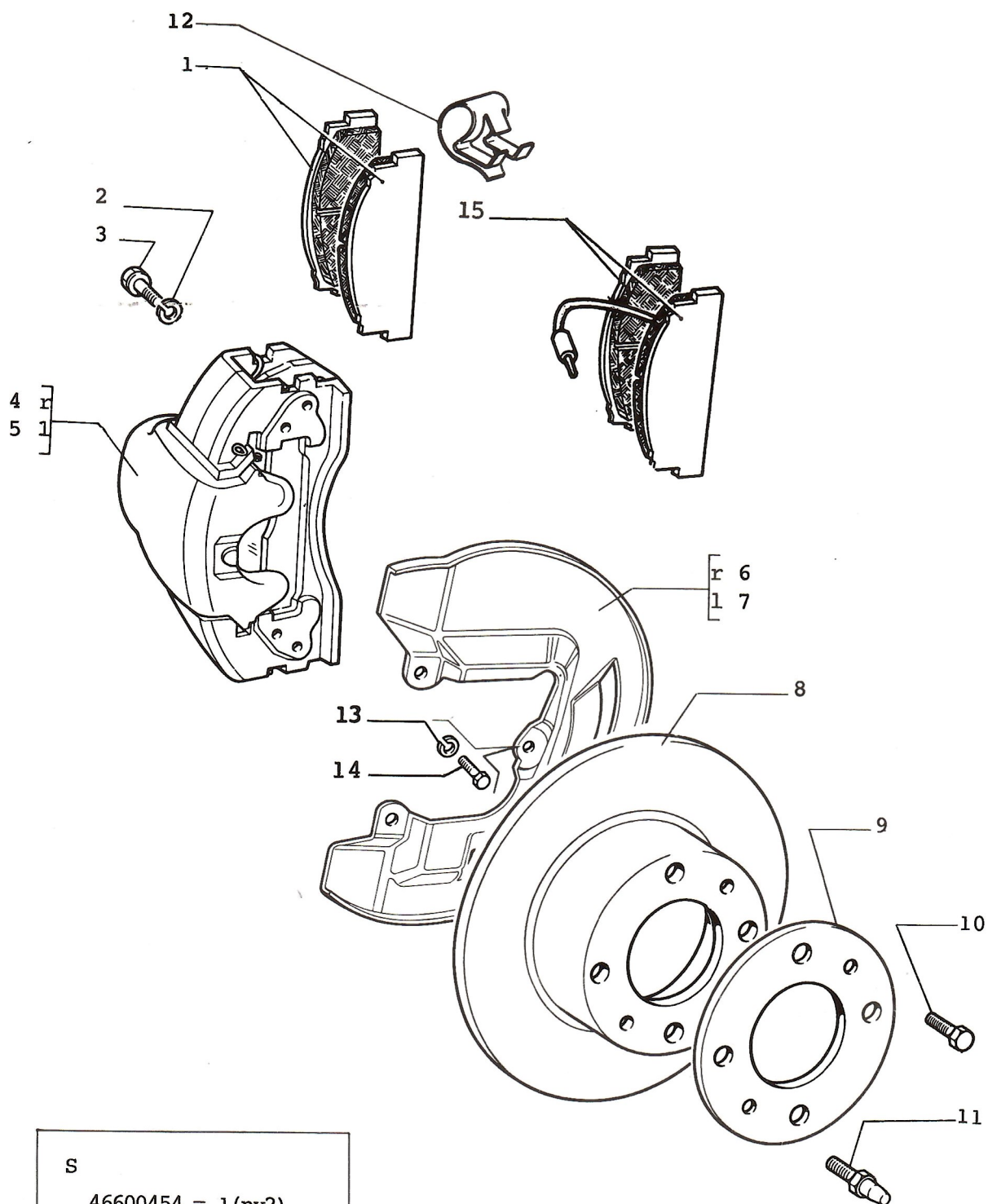
**31,10**

**JULY 1989.**

# BRAKE ACTION COMPENSATOR

31.10

1.	4178748	CAP - BRAKE COMPENSATOR
2.	812877	WASHER
3.	4178747	RING - BRAKE COMPENSATOR
4.	4154550	RING - BRAKE COMPENSATOR
5.	4154552	RING - BRAKE COMPENSATOR
6.	4166592	SPRING
7.	4166593	RING
8.	4135346	RING - BRAKE COMPENSATOR



S

46600454 = 1 (nx2)

46600890 = 1 (nx2)

46602803 = 15 (n x 2)

FRONT WHEEL BRAKE COMPONENTS

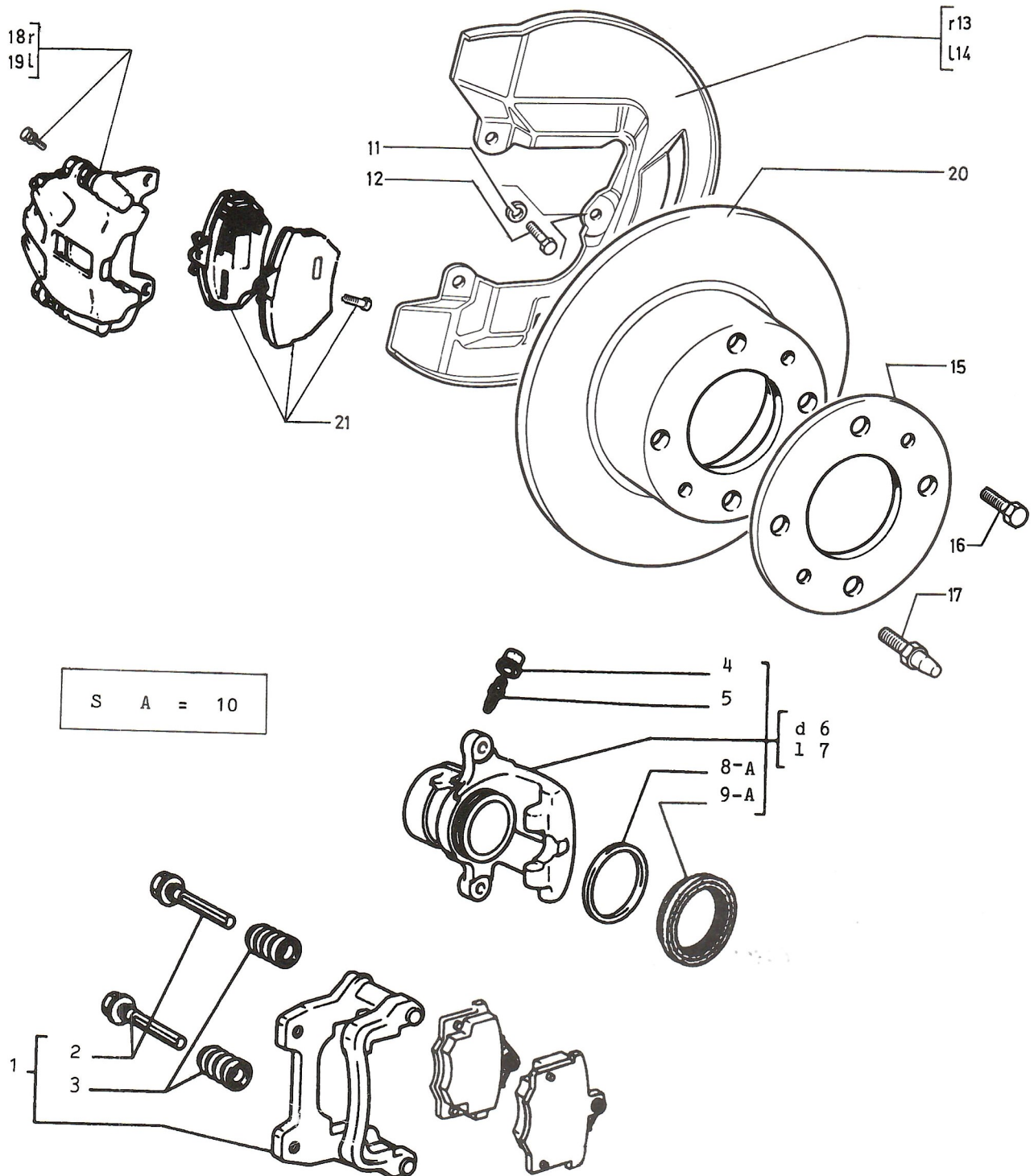
31,30

JANUARY 1990.

# FRONT WHEEL BRAKE COMPONENTS

31.30

2.	10516870	WASHER - LOCK
3.	4164496	BOLT CALIPER MOUNTING
4.	1610537	CALIPER - BRAKE R/H COMPLETE
	46623266	CALIPER - BRAKE R/H COMPLETE (FERODO 451FA)
	46630848 (58)	CALIPER - BRAKE R/H COMPLETE (VARTEX S800J)
5.	1610536	CALIPER - BRAKE L/H COMPLETE
	46623267	CALIPER - BRAKE L/H COMPLETE (FERODO 451FA)
	46630847 (58)	CALIPER - BRAKE L/H COMPLETE (VARTEX S800J)
6.	1026428	PROTECTION - R/H BRAKE DISC
7.	1026429	PROTECTION - L/H BRAKE DISC
8.	4385812	ROTOR - BRAKE
9.	4136475	PLATE - BRAKE DISC
10.	4142528	SCREW - BRAKE DISC BACK PLATE
11.	4221815	STUD - WHEEL/LOCATING
12.	790118	SPRING - BRAKE PAD SUPPORT
	1618889	SPRING - BRAKE PAD SUPPORT
13.	10516470	WASHER
14.	10979421	SCREW
S	46600454	PAD - SET/BRAKE (VARTEX F2031)
S	46600890	PAD - SET/BRAKE (FERODO 451FA)
S	46602803 (58)	PAD - SET/BRAKE (VARTEX S800J) NON ASBESTOS

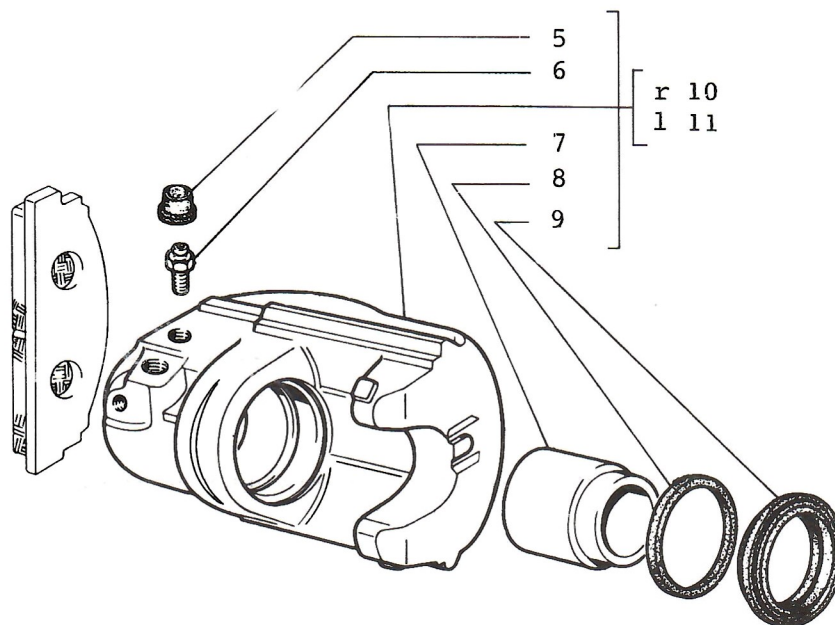
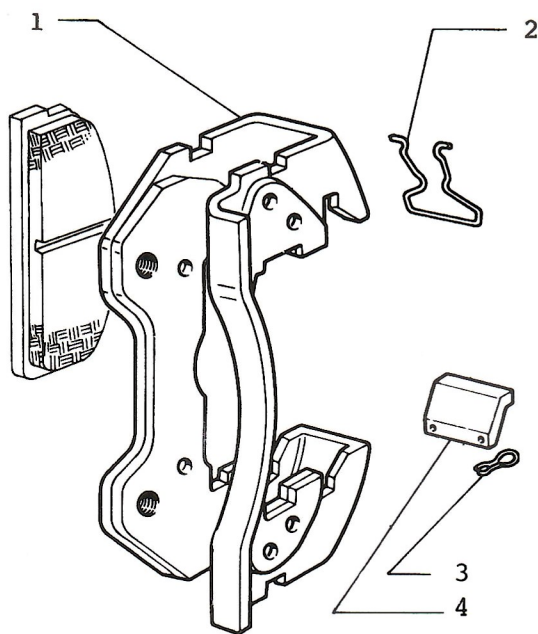




### FRONT WHEEL BRAKE COMPONENTS

31.30/1

1.	46618796 (50)	SUPPORT - BRAKE CALIPER
2.	46618799 (50)	GUIDE
3.	46618800 (50)	WEATHERSTRIP
4.	46618920(50,58,48)	SHIELD-CALIPER BLEED SCREW
5.	46618795 (50)	SCREW - BRAKE/BLEED
6.	46618786 (50)	CALIPER - BRAKE R/H
7.	46618785 (50)	CALIPER - BRAKE L/H
8.	46618794 (50)	SEAL - CALIPER
9.	46618793 (50)	SEAL - CALIPER
10.	46602618 (50)	KIT- CALIPER SEAL
11.	10516470	WASHER
12.	10979421	SCREW
13.	46626078 (50)	PROTECTION - R/H BRAKE DISC
14.	46626077 (50)	PROTECTION - L/H BRAKE DISC
15.	4136475	PLATE - BRAKE DISC
16.	4142528	SCREW - BRAKE DISC
17.	4221815	STUD - BRAKE DISC BACK PLATE
18.	46618782 (50)	CALIPER - BRAKE R/H
19.	46618781 (50)	CALIPER - BRAKE L/H
20.	46618703 (50)	ROTOR - BRAKE
21.	46602617 (50)	PAD - SET/BRAKE



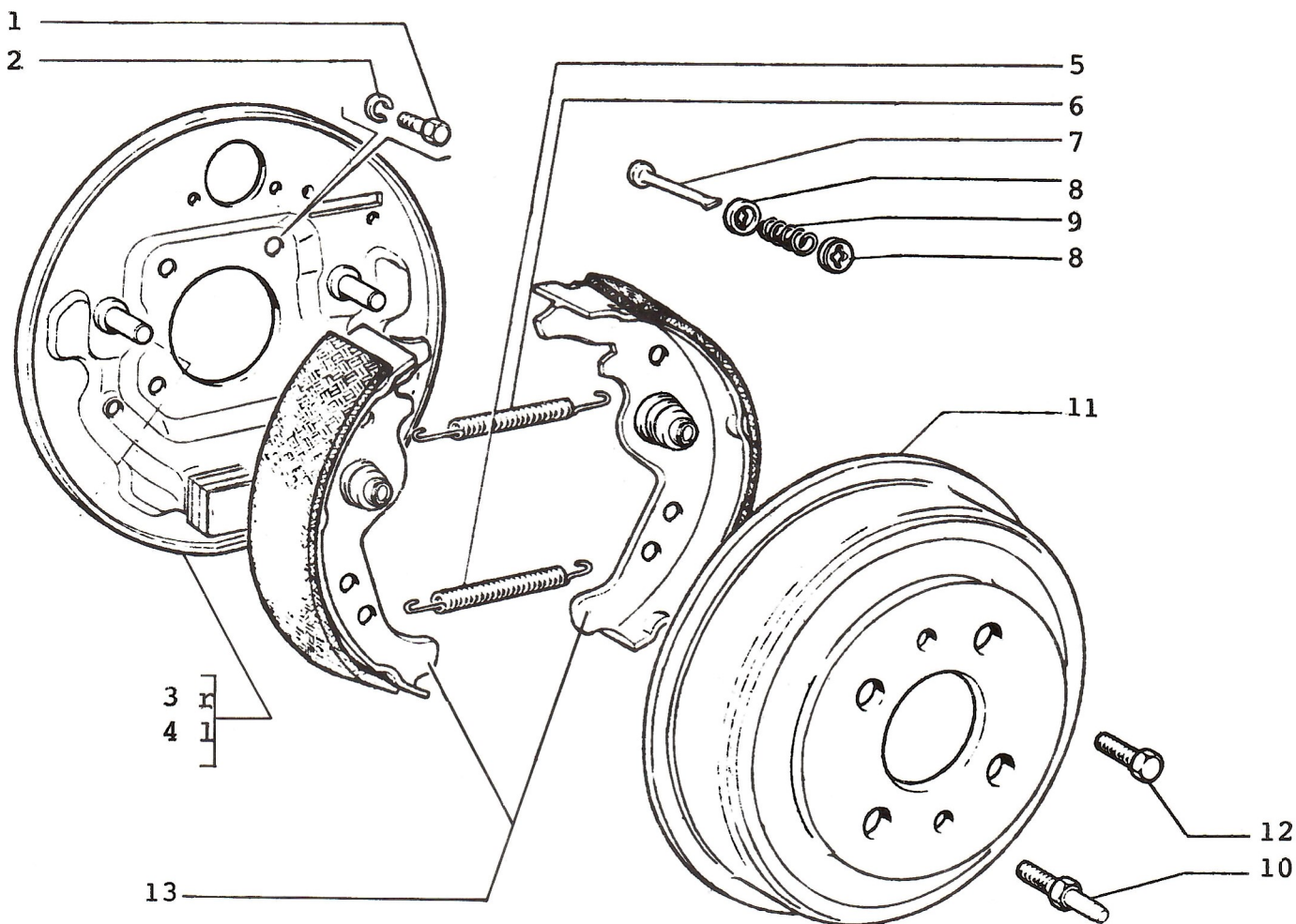
1343056=8 (nx2) +9 (nx2)

1343057=8 (nx2) +9 (nx2) +7 (nx2)

## FRONT WHEEL BRAKE CALIPER

31.31

1.	1610542	SUPPORT - BRAKE CALIPER
2.	1610544	CALIP - CALIPER MOUNT
3.	1610556	PIN - COTTER
4.	1610550	PLATE - CALIPER MOUNTING
5.	1610546	SHIELD - CALIPER BLEED SCREW
6.	1610557	SCREW - BRAKE/BLEED
7.	1610545	PISTON - CALIPER/BRAKE
8.	1610547	SEAL - CALIPER
9.	1610548	SEAL - CALIPER/BRAKE
10.	1610539	CALIPER - BRAKE R/H
11.	1610538	CALIPER - BRAKE L/H
S	1343056	KIT - CALIPER SEAL
S	1343057	KIT - CALIPER REBUILD

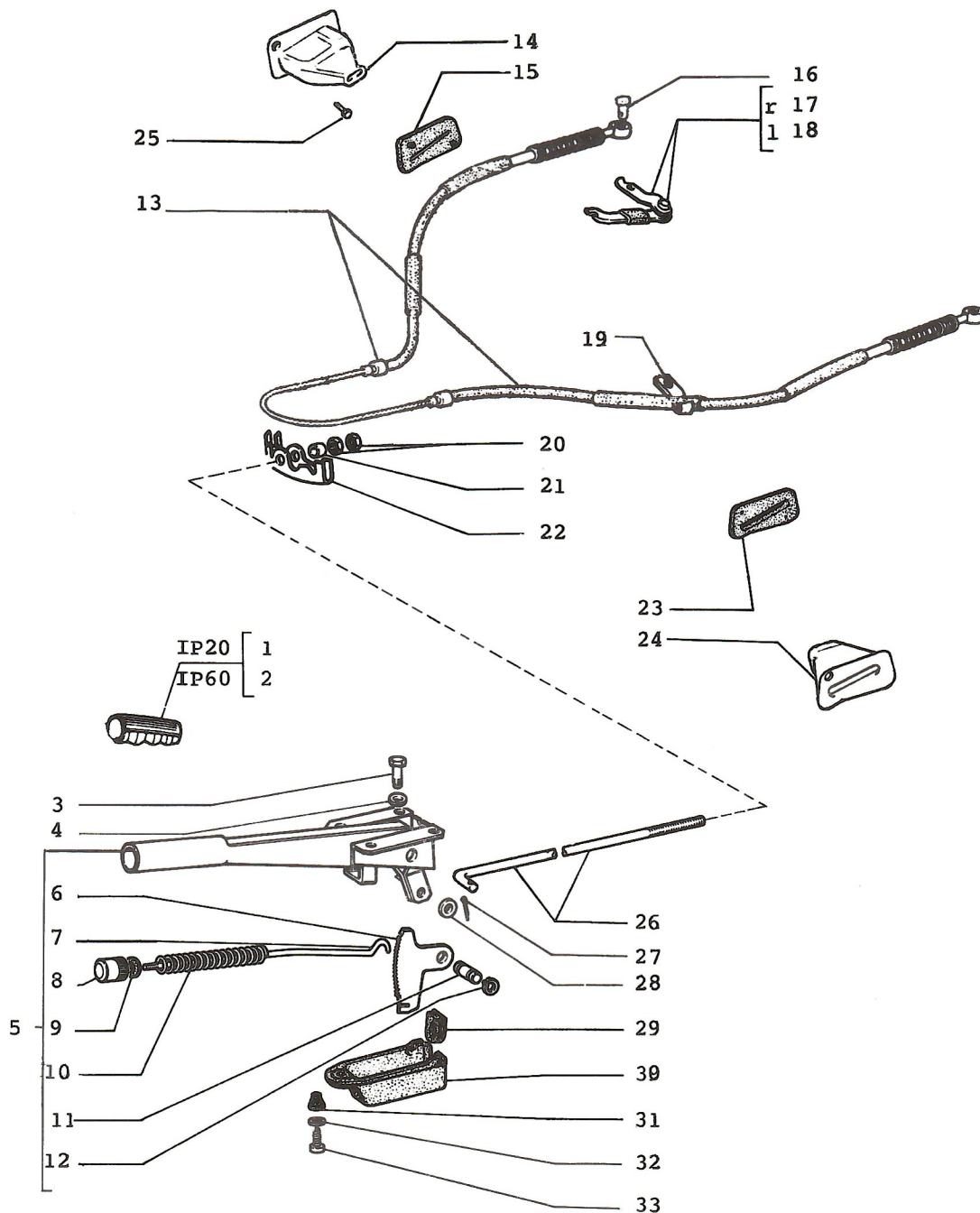


46602787 = 13 (nx2)  
 S 1300150 = 13 (nx2)

### REAR WHEEL BRAKE COMPONENTS

31.32

1.	16043221	SCREW
2.	10516670	WASHER - LOCK
3.	1615808	SUPPORT - R/H REAR BRAKE
	46628083 (50)	SUPPORT - R/H REAR BRAKE
4.	1615809	SUPPORT - L/H REAR BRAKE
	46628084 (50)	SUPPORT - L/H REAR BRAKE
5.	4162202	SPRING
6.	4379664	SPRING - BRAKE SHOE
7.	4046512	PIN - BRAKE ADJUSTER
8.	4008928	CUP - BRAKE ADJUSTER
9.	4124504	SPRING - BRAKE ADJUSTER
10.	4221815	STUD - WHEEL/LOCATING
11.	46621077	DRUM - BRAKE
12.	4142528	SCREW - BRAKE DISC BACK PLATE
S	1300150	KIT - REAR BRAKE SHOE
S	46602787 (58,50)	KIT - REAR BRAKE SHOE (NON ASBESTOS)





# PARKING BRAKE CONTROL

31.35

1.	46620118	HANDLE - EM/BRAKE IP20
2.	46620119	HANDLE - EM/BRAKE IP60
3.	16043211	SCREW
4.	10516671	WASHER - LOCK
5.	91701767	LEVER - HANDBRAKE ASSY
	91703964 (31)	LEVER - HANDBRAKE ASSY
6.	972486	CAM - HAND BRAKE
	46623936 (31)	CAM - HAND BRAKE
7.	4207884	ROD - EMERGENCY BRAKE
8.	4119397	BUTTON - HAND BRAKE LEVER
9.	4119398	WASHER - HAND BRAKE LEVER
10.	857808	SPRING - HAND BRAKE LEVER
11.	857810	PING - HAND BRAKE LEVER
12.	13397676	WASHER - LOCK
13.	4402683	CABLE - EMERGENCY BRAKE
	4402688	CABLE - EMERGENCY BRAKE
14.	4373596	SHIELD - EMER/BRAKE
15.	4373598	SHIELD - EMER/BRAKE
16.	4103996	PIN - EMERGENCY BRAKE CABLE
17.	1618773	LEVER - R/H - SERVICE BRAKE
	46625470 (31)	LEVER - R/H - SERVICE BRAKE
18.	1618772	LEVER - L/H - SERVICE BRAKE
	46625471 (31)	LEVER - L/H - SERVICE BRAKE
19.	4437703	CLIP - EMERGENCY BRAKE CABLE
20.	16102311	NUT
21.	4144518	SPACER - EMERGENCY BRAKE ADJUSTER
22.	4102593	EQUALIZER - EMERGENCY BRAKE CABLE
	46623492 (31)	EQUALIZER - EMERGENCY BRAKE CABLE
23.	4373599	SHIELD - EMER-BRAKE
24.	4373597	SHIELD - EMER/BRAKE
25.	17671001	SCREW - SEAT GUIDE
26.	4402681	ROD - EMERGENCY BRAKE
27.	10796401	PIN - COTTER
28.	10519601	WASHER
29.	4233042	PLUG - EMERGENCY BRAKE
30.	4233041	SHIELD - EMERGENCY BRAKE
31.	4264257	CLIP - EMERGENCY BRAKE
	14215282	CLIP - EMERGENCY BRAKE
32.	10519307	WASHER
33.	17671307	SCREW
	15903901	SCREW