

CLUTCH PEDAL AND CLUTCH RELEASE SYSTEM

21,01

JULY 1989.

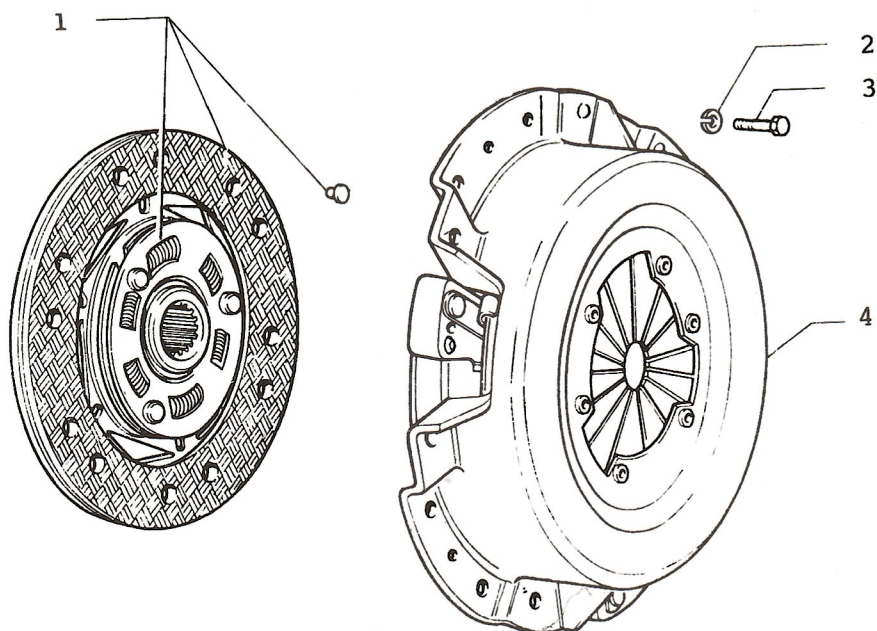
CLUTCH PEDAL AND CLUTCH RELEASE SYSTEM

21.01

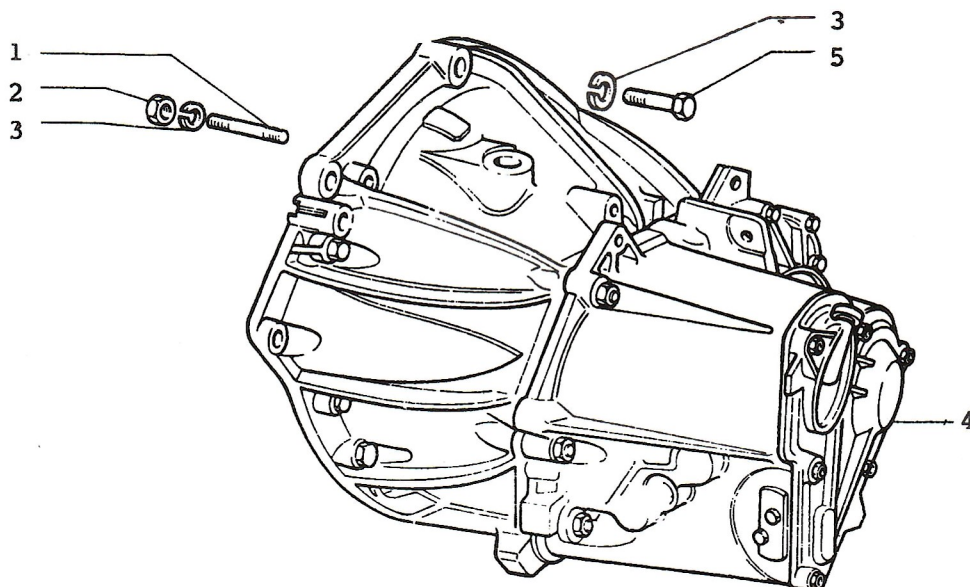
1.	4402475	CABLE - CLUTCH	(*1)
	46622979	CABLE - CLUTCH	(*1)
2.	46623277	CABLE - CLUTCH	(*2)
	46625514	CABLE - CLUTCH	(*2)
3.	894040	RING - CLUTCH RELEASE CABLE	
4.	4391001	SPRING CLUTCH RELEASE	
5.	4127040	CLIP - THROW OUT BEARING	
6.	5924718	LEVER - CLUTCH RELEASE	
7.	4379434	PAD - CLUTCH RELEASE	
8.	15896211	NUT	
9.	4120686	SEAL -REVERSE GEAR	
10.	4190619	LEVER - CLUTCH RELEASE	
11.	4409361	BEARING - THROW OUT	
12.	4108077	BUSHING - CLUTCH RELEASE LEVER	
13.	10516670	WASHER - LOCK	
14.	4200713	SCREW - CLUTCH RELEASE LEVER	
15.	872241	PLUG - CLUTCH PEDAL	
16.	12647001	WASHER	
17.	10516670	WASHER - LOCK	
18.	16102311	NUT	
19.	4144275	PAD - PEDAL	
20.	1618633	GASKET	(*2)
21.	10516470	WASHER - LOCK	(*2)
22.	11063976	CLIP - CLUTCH CABLE	
23.	10902011	SCREW	(*2)
24.	1619864	PEDAL - CLUTCH	

NOTE 1: 1 ST TYPE USED UP TO CAR No 52095

NOTE 2: 2 ND TYPE USED FROM CAR No 52096

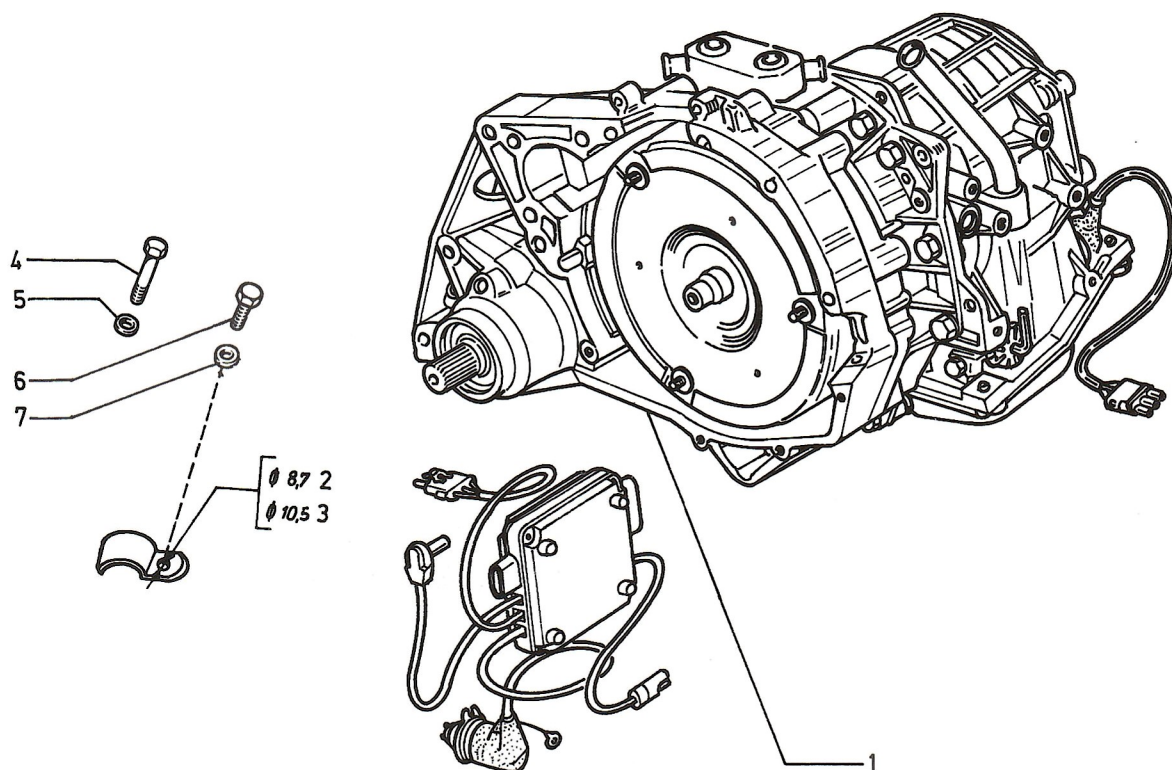


- | | | |
|----|---------------|-------------------------------|
| 1. | 1615349 | PLATE - DRIVEN/CLUTCH |
| | 46629110 (58) | PLATE - DRIVEN/CLUTCH |
| 2. | 10516470 | WASHER - LOCK |
| 3. | 10902231 | BOLT - CLUTCH COVER |
| 4. | 1617811 | COVER - CLUTCH PRESSURE PLATE |
| | 1619087 (31) | COVER - CLUTCH PRESSURE PLATE |

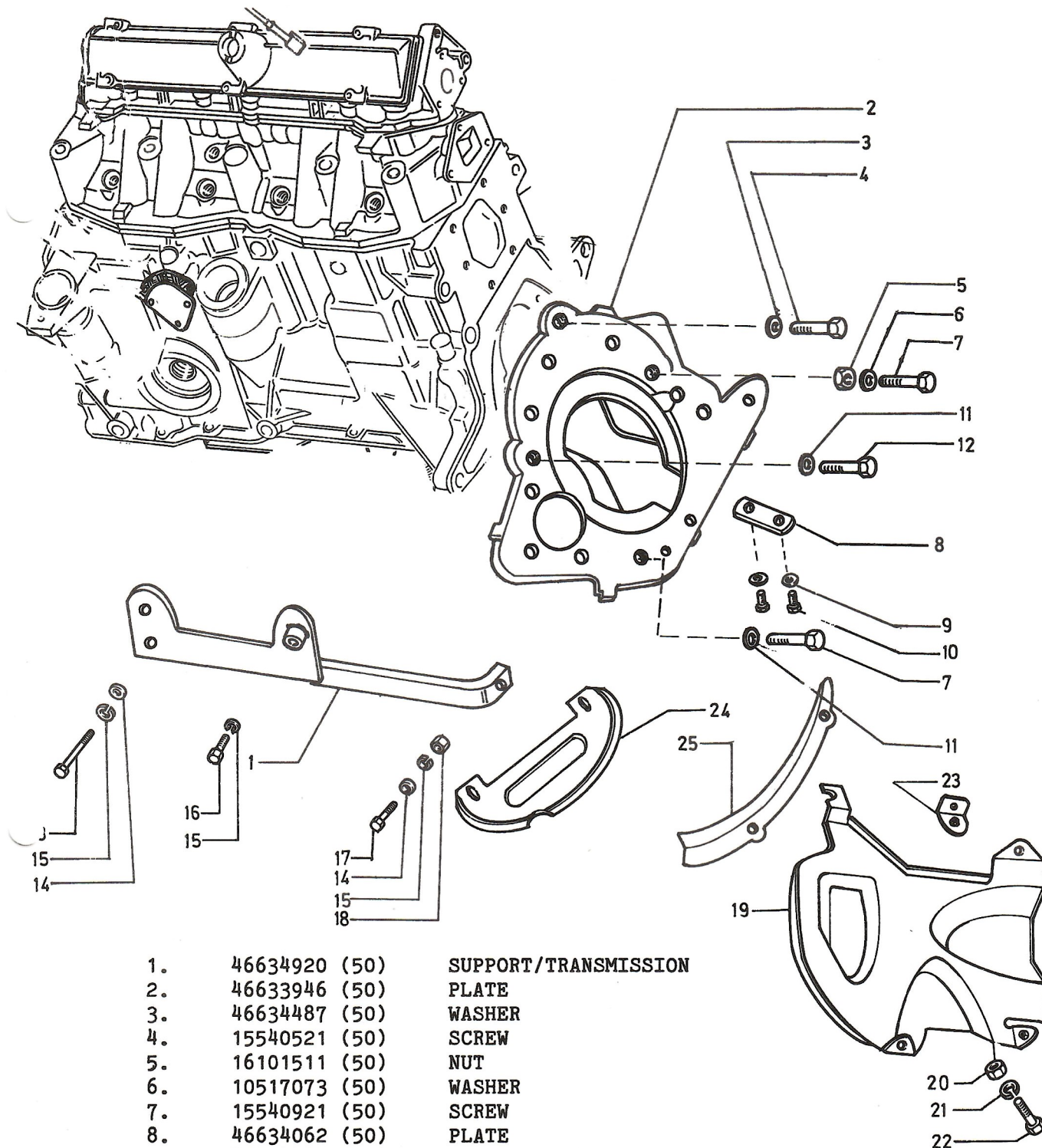


1.	13552821	STUD
2.	16101511	NUT
3.	10517070	WASHER - LOCK
4.	91701926	TRANSMISSION
	91703622 (27,42)	TRANSMISSION
	91703380 (44)	TRANSMISSION
	91704519 (58)	TRANSMISSION
	91704920 (58)	TRANSMISSION (*1)
5.	15541121	SCREW

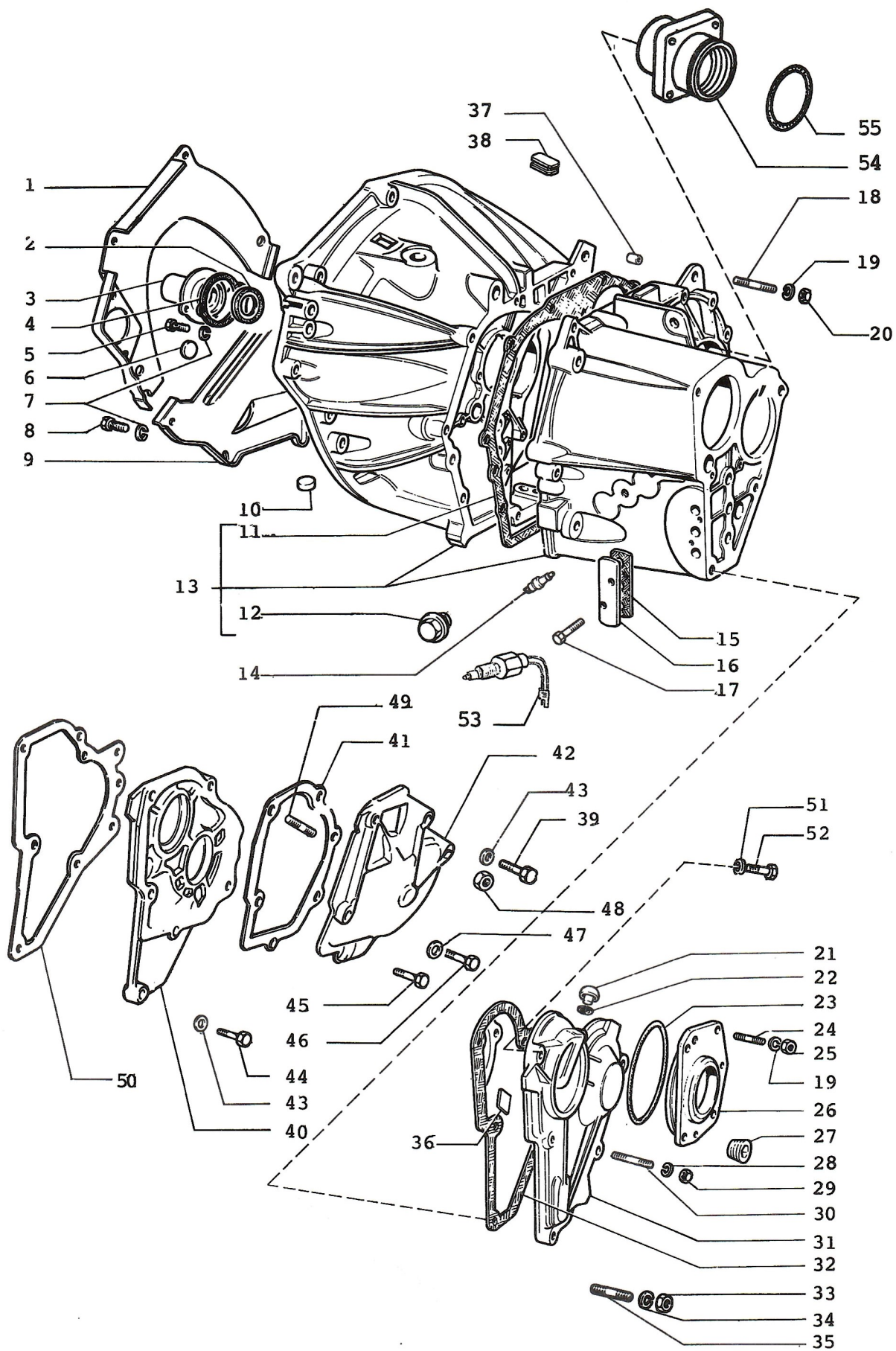
NOTE 1: 2 ND TYPE USED FROM CAR No 1809 VIN 448339

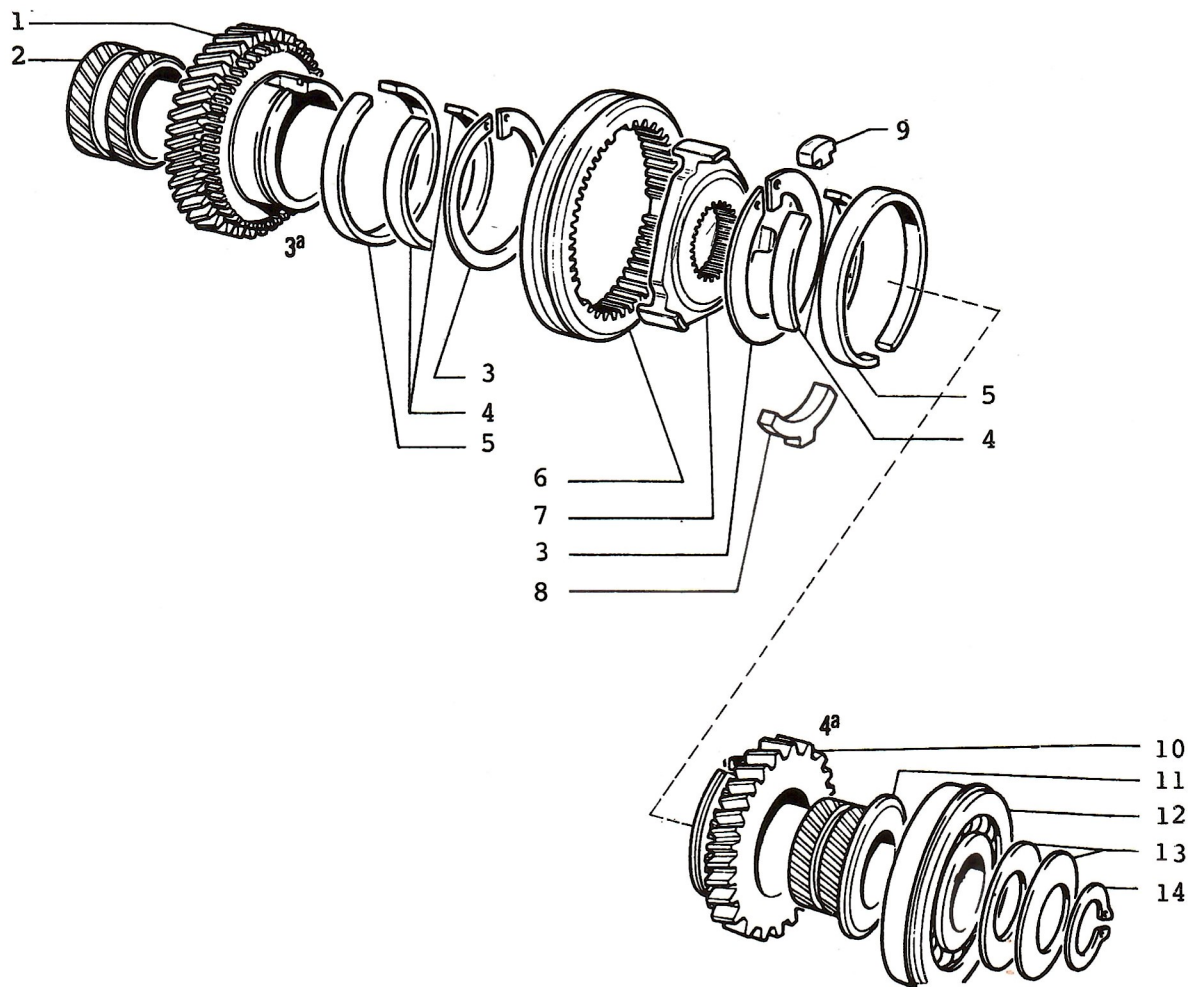


1.	46633972 (50)	AUTOMATIC TRANSMISSION
2.	46635419 (50)	SUPPORT Ø 13,5
3.	46634007 (50)	SUPPORT
4.	46634011 (50)	SCREW M 10 x 1,5
5.	46634012 (50)	WASHER Ø 10
6.	46634008 (50)	SCREW M 8 x 1,25
7.	46634009 (50)	WASHER Ø 8

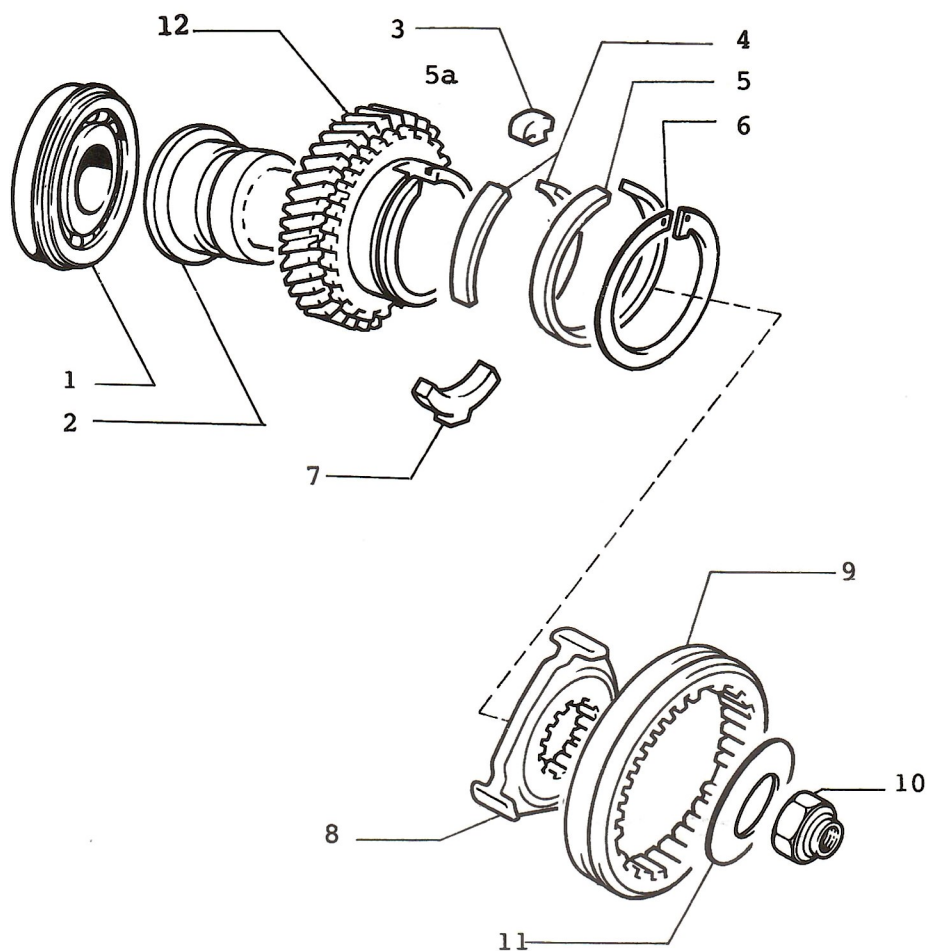


1.	46634920 (50)	SUPPORT/TRANSMISSION
2.	46633946 (50)	PLATE
3.	46634487 (50)	WASHER
4.	15540521 (50)	SCREW
5.	16101511 (50)	NUT
6.	10517073 (50)	WASHER
7.	15540921 (50)	SCREW
8.	46634062 (50)	PLATE
9.	46634488 (50)	WASHER LOCK
10.	11106221 (50)	SCREW M 10 x 1,5 x 25
11.	12641001 (50)	WASHER
12.	15971621 (50)	SCREW M 10 x 1,25 x 90
13.	15970527 (50)	SCREW M 10 x 1,25 x 20
14.	12646821 (50)	WASHER
15.	46634488 (50)	WASHER LOCK
16.	15970927 (50)	SCREW M 10 x 1,25 x 35
17.	11234727 (50)	SCREW M 10 x 1,25 x 45
18.	12164717 (50)	NUT M 10 x 1,25
19.	46635513 (50)	PROTECTION/TRANSMISSION
20.	15896211	NUT M 6
21.	10519401	WASHER
22.	10979411	SCREW M 6 x 10
23.	46635514 (50)	SUPPORT/PROTECTION
24.	46633967 (50)	PROTECTION/TRANSMISSION
25.	46633968 (50)	PROTECTION/TRANSMISSION

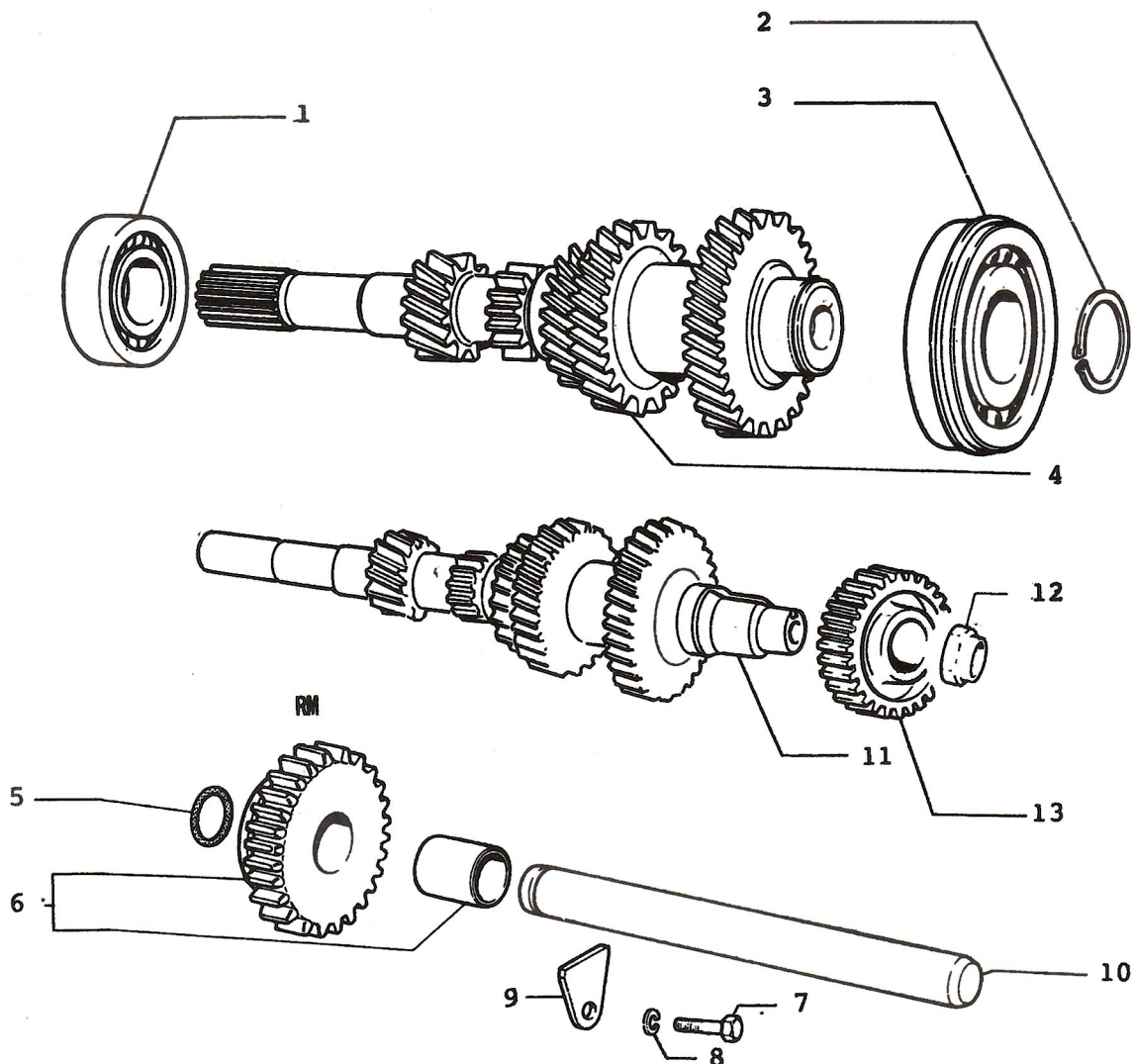




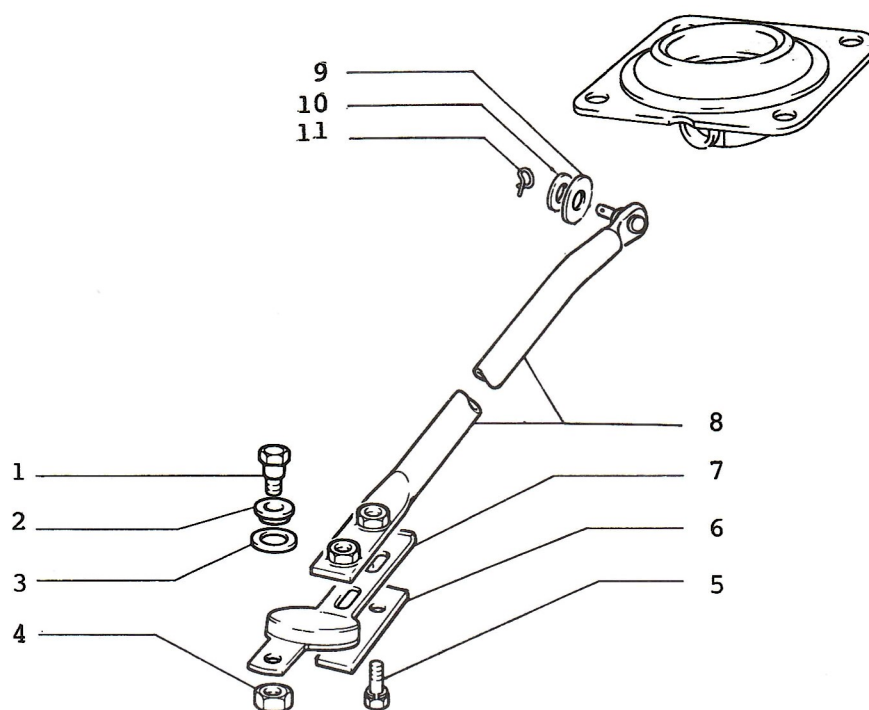
1.	4392625	GEAR (3 RD)
2.	5992005 (44)	GEAR (3 RD)
3.	4242489	BUSHING - TRANSMISSION
4.	4183888	RING - LOCK/SYNCHRONIZER
5.	4183876	SPRING SYNCHORNIZER
6.	4451144	RING - SYNCHRONIZER
7.	4366610	SLEEVE - TRANSMISSION
8.	4392620	HUB - TRANSMISSION
9.	4183877	GUARD - SYNCHRONIZER HUB
10.	4183873	KEY - TRANS SYNCHRONIZER
11.	4392622	GEAR (4 TH)
12.	5992009 (44)	GEAR (4 TH)
13.	4242490	BUSHING - TRANSMISSION
14.	4190790	BEARING - TRANSMISSION SHAFT
	4119189	WASHER - TRANSMISSION GEARS
	4056239	RING - LOCK/TRANSMISSION BEARING



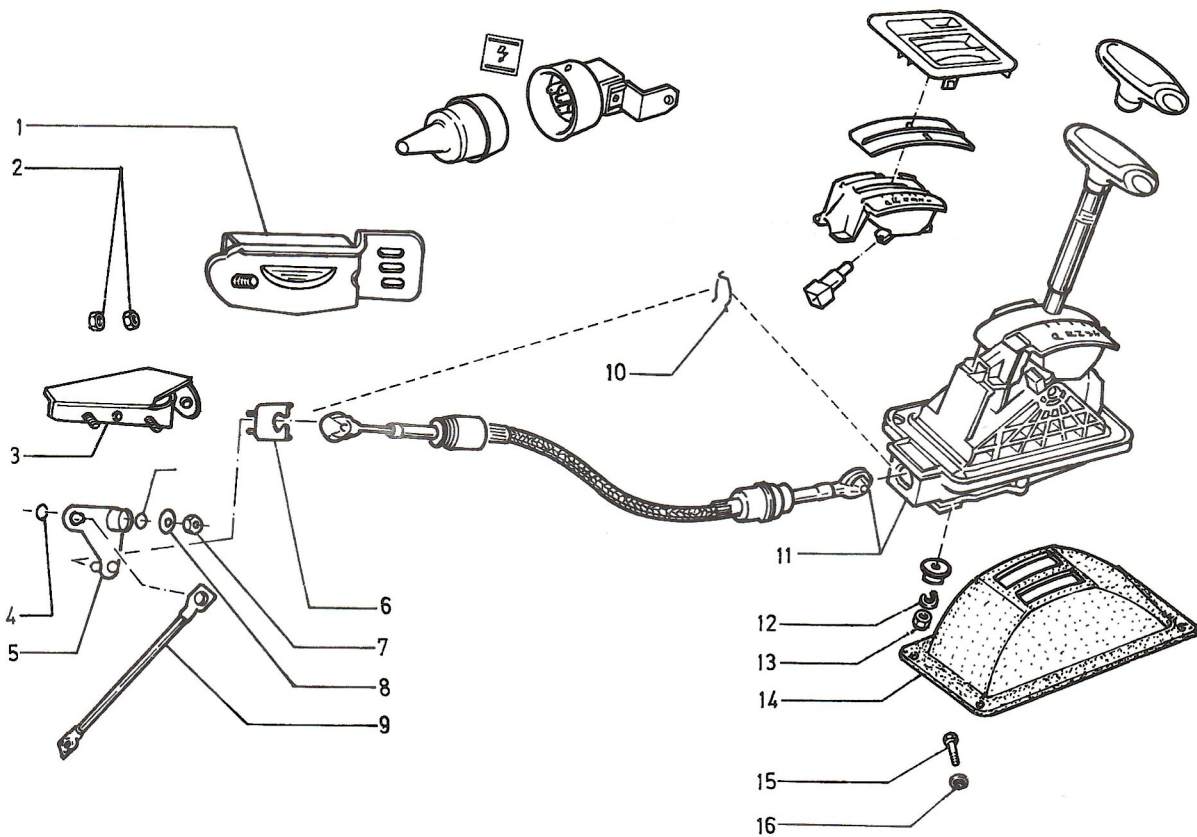
1.	4190790	BEARING
2.	4368286 (44)	BUSHING - TRANSMISSION
	46628861 (58)	BUSHING - TRANSMISSION
3.	4092092 (44)	KEY - TRANS SYNCHRONIZER
4.	4092094 (44)	SPRING SYNCHRONIZER
5.	4451145 (44)	RING SYNCHRONIZER
6.	4414407 (44)	RING - LOCK/SYNHRONIZER
7.	4092105 (44)	GUARD SYNHRONIZER
8.	4393742 (44)	HUB - TRANSMISSION
9.	4465865 (44)	SLEEVE - TRANSMISSION
10.	4411737 (44)	NUT
11.	4393300 (44)	WASHER
12.	5992013 (44)	GEAR (5 TH)



1.	4432350	BEARING - TRANSMISSION SHAFT
2.	4056239	RING - LOCK/TRANSMISSION BEARING
3.	4190790	BEARING - TRANSMISSION SHAFT
4.	4457561	SHAFT - CLUSTER
5.	4120686	SEAL - REVERSE GEAR
	7539598 (58)	SEAL - REVERSE GEAR
6.	4459198	GEAR - REVERSE IDLER
	7575271 (58)	GEAR - REVERSE IDLER
7.	10902321	SCREW - REVERSE GEAR SHAFT
8.	10519401	WASHER
9.	4186393	PLATE - LOCK/REVERSE SHAFT
10.	4396386	SHAFT - REVERSE
	46618876 (58)	SHAFT - REVERSE
11.	7553581 (44)	SHAFT - CLUSTER
12.	4411737 (44)	NUT
13.	5992016 (44)	GEAR (5 TH)



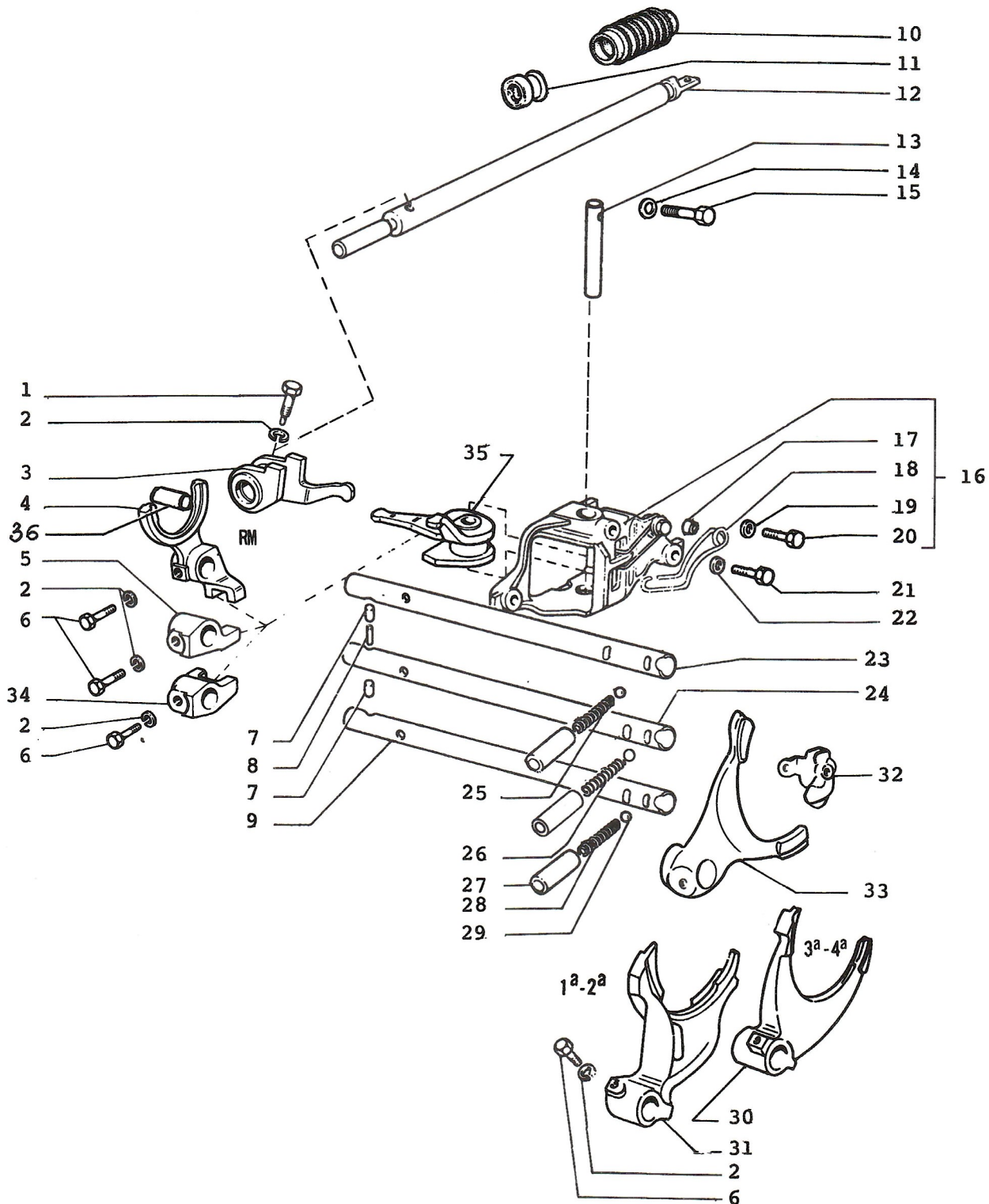
1.	4019755	SCREW - SHIFT CONTROL ROD
2.	1619660	SPACER
3.	4169421	WASHER - GEARSHIFT CONTROL PLATE
4.	12574211	NUT
5.	13825821	SCREW
6.	4166194	PLATE - GEARSHIFT CONTROL
7.	1619662	JOINT FLEXIBLE
8.	4460113	LEVER - SHIFT CONTROL
9.	12645801	WASHER
10.	4058800	CLIP - BRAKE COMPENSATOR
11.	4351739	RETAINER - GEARSHIFT CONTROL



GEARSHIFT LEVER AND COMPONENTS

22.07/2

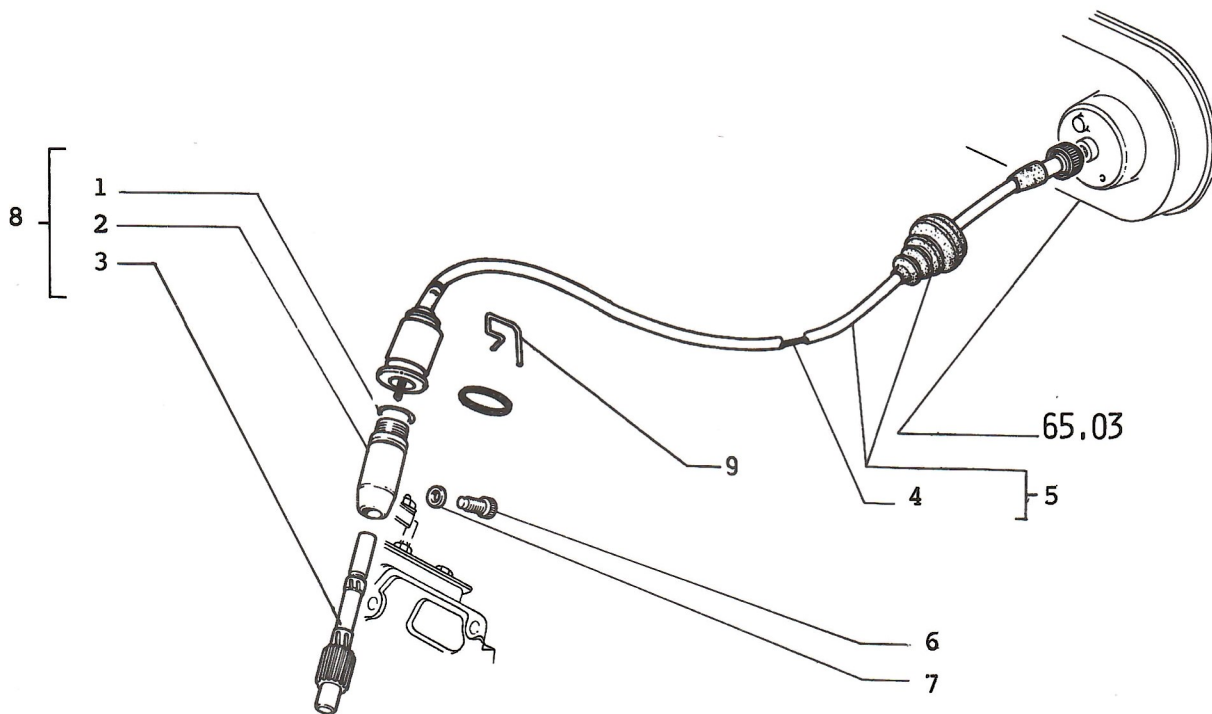
1.	46633935 (50)	SUPPORT L/H
2.	46634050 (50)	NUT
3.	46634409 (50)	SUPPORT R/H
4.	46634048 (50)	GASKET
5.	46634045 (50)	LEVER
6.	46634046 (50)	KEY
7.	46634049 (50)	NUT
8.	46634047 (50)	WASHER
9.	46634044 (50)	CONNECTION
10.	46634041 (50)	SPRING
11.	46634036 (50)	GEAR SHIFT OUTER CONTROLS
12.	10571770	WASHER - LOCK
13.	16100811	NUT
14.	46634162 (50)	BOOT - SHIFT
15.	15909407	SCREW 6 x 16
16.	13336303	WASHER



GEARSHIFT LINKAGE AND INNER CONTROL

22.10

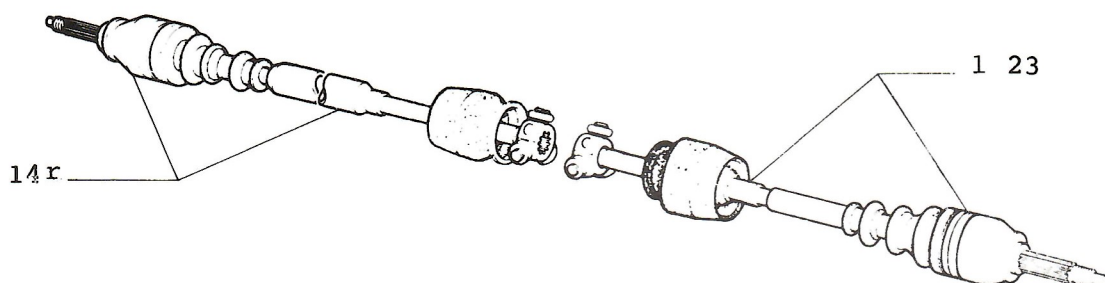
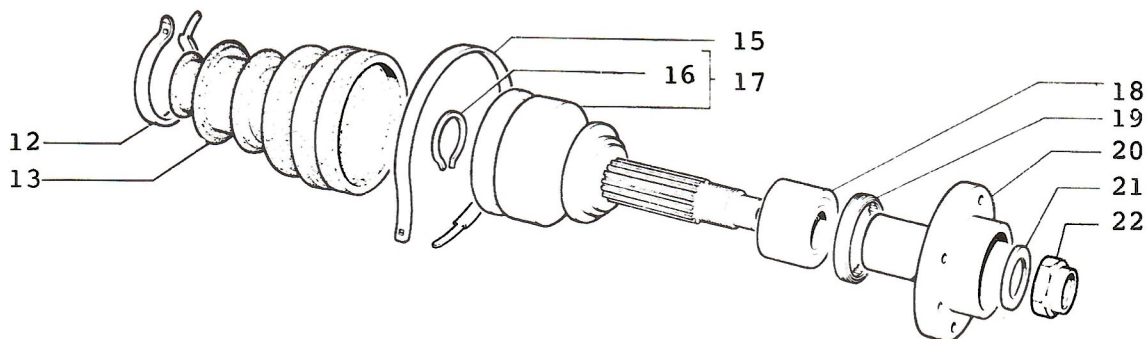
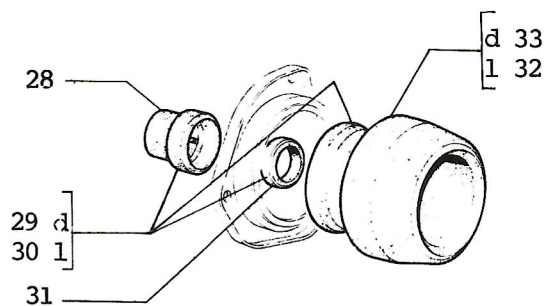
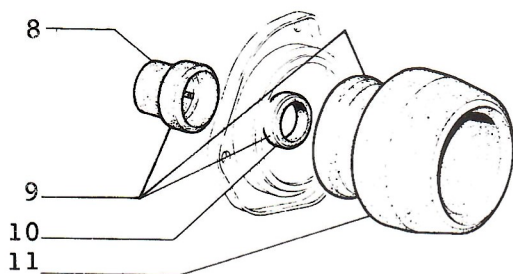
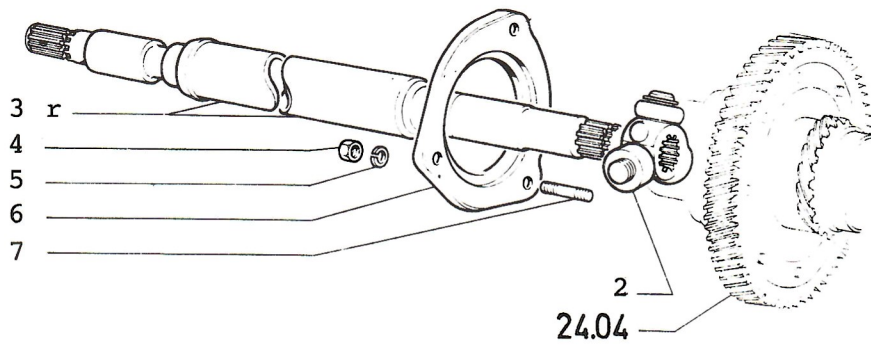
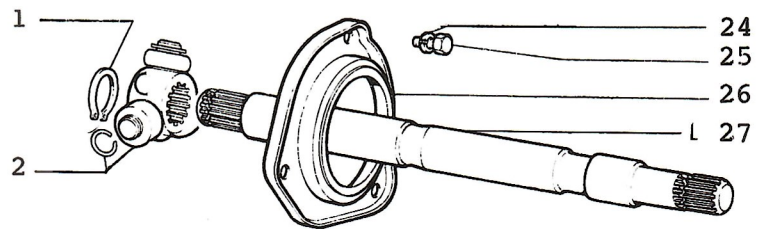
1.	4170541	BOLT - SHIFT DOG
2.	10516470	WASHER LOCK
3.	4206516	LEVER - TRANSMISSION LONKAGE
4.	4451152	FORK - SHIFT
5.	4240625	DOG - SHIFT
6.	1015548	SCREW - SHIFT DOOG
7.	874761	ROLLER - SHIFT FORK
8.	873093	ROLLER - SHIFT FORK
9.	4304626	ROD - SHIFT CONTROL
10.	4201404	BOOT - SHIFT ROD
11.	4260749	BUSHING - SHIFT LINKAGE
12.	4206520	ROD - TRANSMISSION SHIFTING
13.	4206519	ROD - TRANSMISSION LINKAGE
14.	10519401	WASHER
15.	16050521	BOLT - SHIFT CONTROL
16.	4214586	SUPPORT - SHIFT CONTROL
	4451146(27,42,44)	SUPPORT - SHIFT CONTROL
17.	4214590	SPACER - SHIFT CONTROL
	4451148(27,42,44)	SPACER - SHIFT CONTROL
18.	4322151	SPRING GEARSHIFT CONTROL
	4451147(27,42,44)	SPRING GEARSHIFT CONTROL
19.	4255251	WASHER - GEARSHIFT CONTROL
20.	4214589	SCREW
	4408897(27,42,44)	SCREW
21.	10902921	BOLT - SHIFT CONTROL
22.	10519401	WASHER
23.	4465916	ROD - SHIFT
	4466648 (44)	ROD - SHIFT
24.	4185981	ROD - SHIFT CONTROL
25.	983027	SPRING - SHIFT FORK (GREEN)
26.	4451153	SPRING - GEARSHIFT CONTROL (UNCOLORED)
27.	983028	CASING - SHIFT FORK
28.	4059537	SPRING (BLUE)
29.	20419310	BALL
30.	4392821	FORK - SHIFT
31.	4366764	FORK - SHIFT
32.	4408887 (44)	DOG - SHIF1
33.	4375474 (44)	FORK - SHIFT
34.	4240624	DOG - SHIFT
35.	4451155	LEVER - SHIFT CONTROL
36.	4366772	SPACER



SPEEDOMETER CABLE AND DRIVE GEAR

22.24

1.	14457180	GASKET - SPEEDO CABLE
2.	4229610	SUPPORT - SPEEDO DRIVE
3.	4230520	GEAR - DRIVEN/SPEEDO
4.	4428083	CABLE - INNER
	46622170	CABLE - INNER
5.	4428082	CABLE - SPEEDOMETER
	46622178	CABLE - SPEEDOMETER
	46634051 (50)	CABLE - SPEEDOMETER (TELEOPTIK)
	46634053 (50)	CABLE - SPEEDOMETER (MLADOST)
6.	4118920	SCREW - SPEEDO DRIVE GEAR
7.	12639750	WASHER
8.	4230519	SUPPORT - SPEED DRIVE GEAR
9.	46634055 (50)	RETAINER/CABLE - SPEEDOME



AXLE SHAFTS

24.01

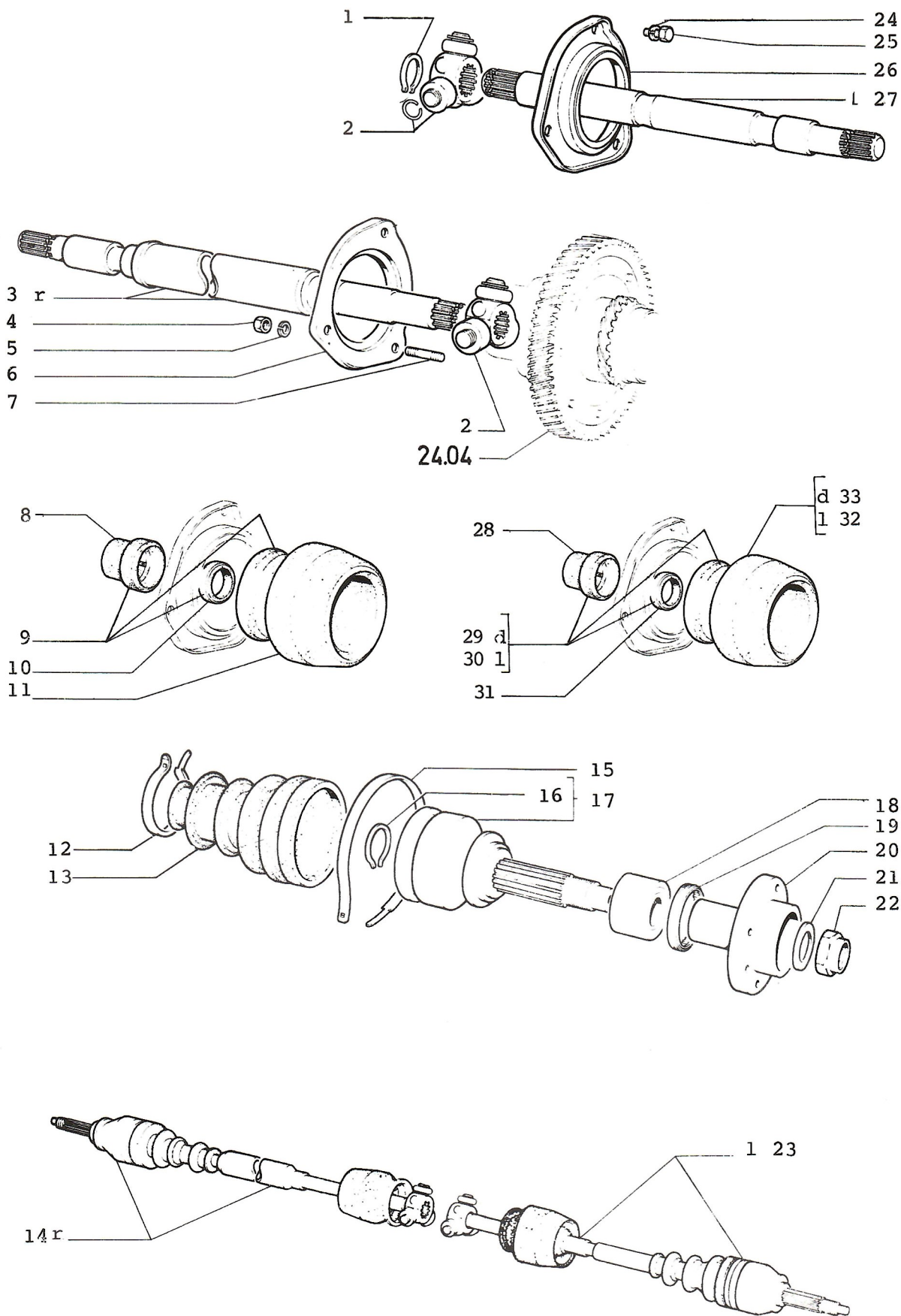
1.	11066976	CLIP - SPIDER JOINT
2.	4247393	SPIDER - AXLE SHAFT (*1)
	1618516	SPIDER - AXLE SHAFT (*2)
	5947210 (58)	SPIDER - AXLE SHAFT (*3)
3.	46621545	SHAFT - AXLE R/H
	46632355 (58)	SHAFT - AXLE R/H (*3)
4.	15896211	NUT
5.	10516470	WASHER - LOCK
6.	4177457	COVER - C.V. JOINT
7.	11500021	STUD - C.V. BOOT FLANGE
8.	4333081	BUSHING
9.	4333088	BOOT - AXLE SHAFT
	46600855	BOOT - AXLE SHAFT
10.	40001720	SEAL - AXLE SHAFT
11.	4177472	BOOT - C.V. JOINT
	1619138	BOOT - C.V. JOINT
12.	4302309	COLLAR - C.V. JOINT BOOT
13.	4383758	BOOT - C.V. JOINT (*1)
	1618976	BOOT - C.V. JOINT (*2)
	46629595 (58)	BOOT - C.V. JOINT (*3)
14.	46621544	SHAFT - AXLE (*1)
	1618990	SHAFT - AXLE (*2)
	46632363 (58)	SHAFT - AXLE (*3) (DDR)
	46632368 (58)	SHAFT - AXLE (ZREČE) (*3)
15.	4205017	COLLAR - C.V. JOINT BOOT (*1)
	1618978	COLLAR - C.V. JOINT BOOT (*2)
16.	4258741	RING - LOCK (*1)
	1619140	RING - LOCK (*2)
17.	4308412	JOINT - CONSTANT VELOCITY (*1)
	46622842	JOINT - CONSTANT VELOCITY (*1)
	1618992	JOINT - CONSTANT VELOCITY (DDR) (*2)
	1619157	JOINT - CONSTANT VELOCITY (ZREČE) (*3)
18.	4339308	BEARING - AXLE Ø 30 x Ø 60 x 37
	5947834 (58)	BEARING - AXLE Ø 30 x Ø 60 x 37 (*3)
19.	4243293	RING - AXLE SHAFT (*1)
	4443881	RING - AXLE SHAFT (*2)
20.	4260431	HUB - AXLE SHAFT (*4)
	4399777	HUB - AXLE SHAFT
21.	4248777	WASHER
22.	4307325	NUT - AXLE STUB
23.	4401472	SHAFTAXLE L/H (*1)
	1618987	SHAFTAXLE L/H (*2)
	46632352 (58)	SHAFTAXLE L/H (DDR) (*3)
	46632365 (58)	SHAFTAXLE L/H (ZREČE) (*3)
24.	10516471	WASHER - LOCK
25.	10979421	SCREW
26.	4177457	COVER - C.V. JOINT
27.	4401469	SHAFT - AXLE L/H
	46632347 (58)	SHAFT - AXLE L/H (*3)
28.	5963911 (58)	BUSHING (*3)
29.	46618520 (58)	BOOT - AXLE SHAFT R/H (*3)
30.	46618521 (58)	BOOT - AXLE SHAFT L/H (*3)
31.	40004360 (58)	SEAL - AXLE SHAFT (*3)
32.	7564489 (58)	BOOT - C.V. JOINT L/H (*3)
33.	5963126 (58)	BOOT - C.V. JOINT R/H (*3)

NOTE 1: 1 ST TYPE USED UP TO CAR No 10363 VIN 367845

NOTE 2: 2 ND TYPE USED FROM CAR No 10364 VIN 367846

NOTE 3: 2 ND TYPE USED FROM CAR No 1809 VIN 448339

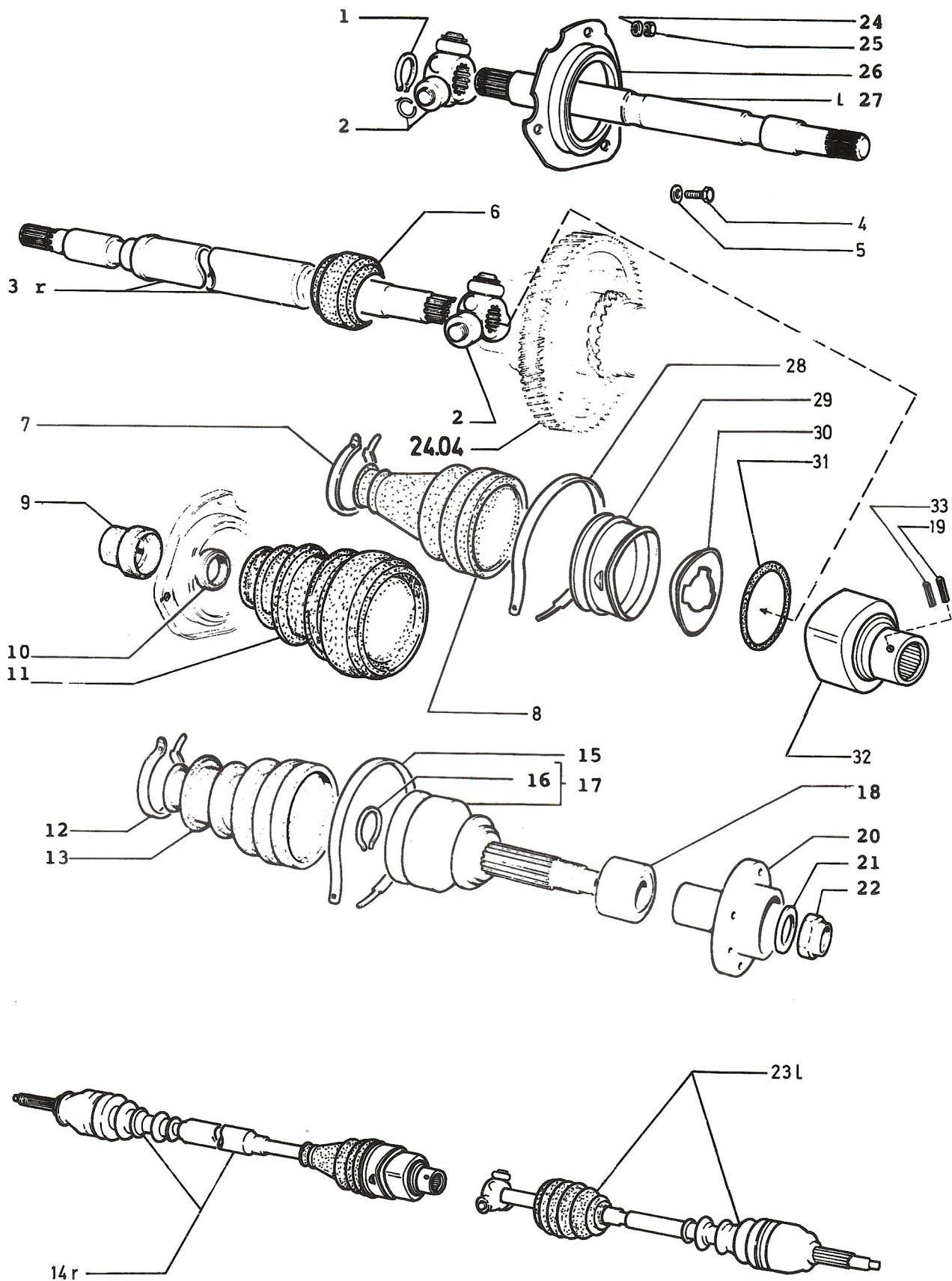
NOTE 4: CANCELED ITEM



AXLE SHAFTS

3.	46635525 (58)	SHAFT - AXLE R/H (*1)
6.	46630435 (58)	COVER - C.V. JOINT (*1)
14.	46633768 (58)	SHAFT - AXLE COMPL. (DDR) (*1)
	46633773 (58)	SHAFT - AXLE COMPL. (ZREČE) (*1)
23.	46633765 (58)	SHAFT - AXLE COMPL. (DDR) (*1)
	46633770 (58)	SHAFT - AXLE COMPL. (ZREČE) (*1)
27.	46635527 (58)	SHAFT - AXLE L/H (*1)
31.	46633189 (58)	SEAL - AXLE SHAFT (*1)
	46633190 (58)	SEAL - AXLE SHAFT (*1)
32.	46633191 (58)	BOOT - C.V. JOINT L/H (*1)
33.	46633192 (58)	BOOT - C.V. JOINT R/H (*1)

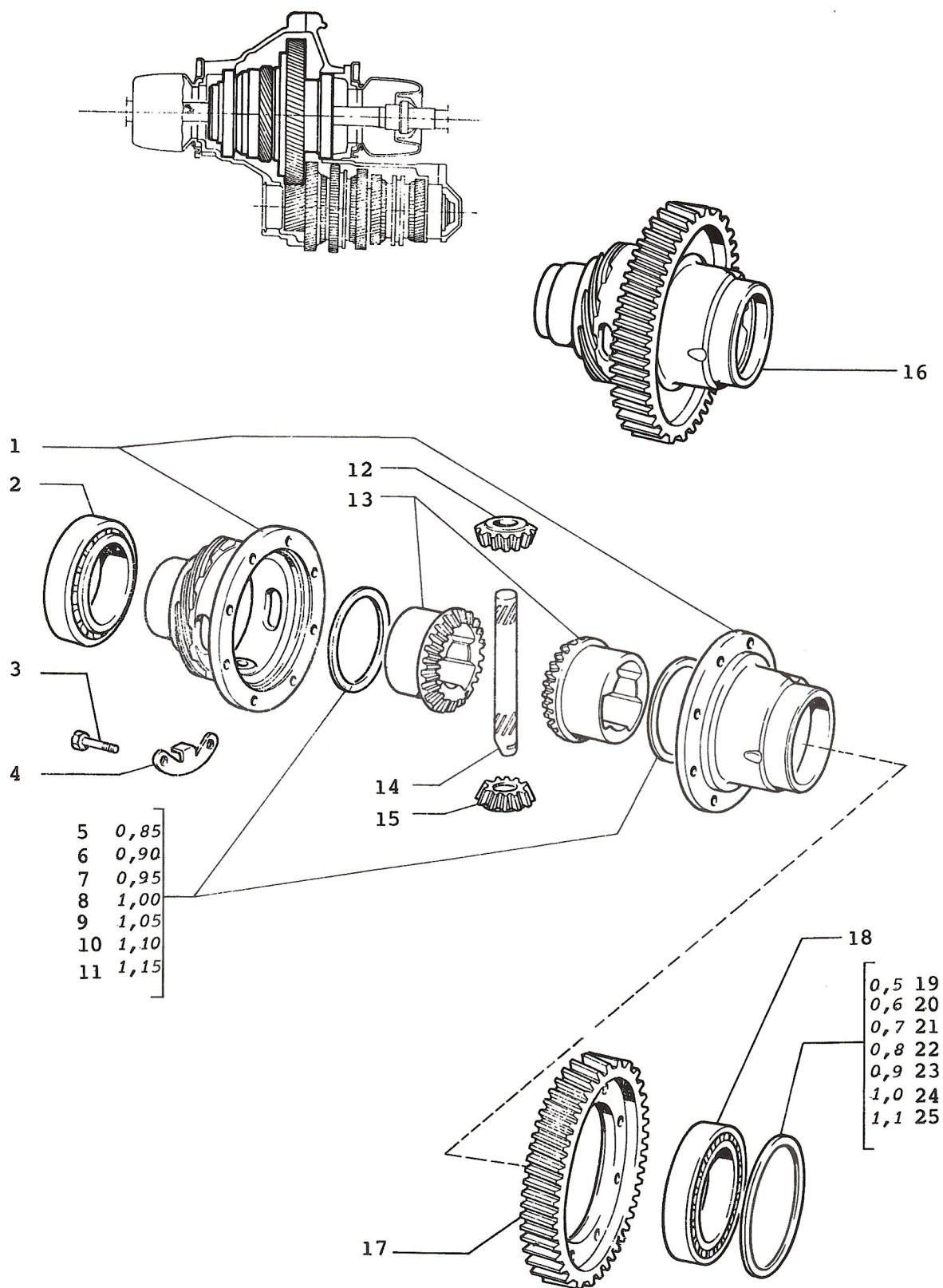
NOTE 1: FOR MODEL (58) (VI 1991.)



AXLE SHAFTS

24.01/1

1.	46635426 (50)	CLIP - SPIDER JOINT
2.	46629465 (50)	SPIDER - AXLE SHAFT
3.	46633922 (50)	SHAFT - AXLE R/H
4.	16043311	SCREW
5.	10571770	WASHER LOCK
6.	46635143 (50)	BUSHING
7.	46631589 (50)	COLLAR - C.V. JOINT BOOT
8.	46631582 (50)	BOOT - C.V. JOINT
9.	46631579 (50)	BUSHING/SHAFT - AXLE L/H
10.	40001720 (50)	SEAL - AXLE SHAFT
11.	46631578 (50)	BOOT - C.V. JOINT
12.	4302309	COLLAR - C.V. JOINT BOOT
13.	46629595 (50)	BOOT - C.V. JOINT
14.	46633896 (50)	SHAFT - AXLE (LÖBRO - FIAT)
	46633900 (50)	SHAFT - AXLE / ZWICKAU DDR
	46633904 (50)	SHAFT - AXLE /LÖBRO - ZREČE
15.	1618978	COLLAR - C.V. JOINT BOOT/ZWICKAU DDR
	4205017	COLLAR - C.V. JOINT BOOT(FIAT - ZREČE)
16.	4258741	RING - LOCK/FIAT -
	1619140	RING - LOCK/DDR -
	1619152	RING - LOCK/ZREČE -
17.	4390952	JOINT-CONSTANT VELOCITY/LÖBRO FIAT
	1618977	JOINT-CONSTANT VELOCITY/ZWICKAU-DDR
	46627486	JOINT-CONSTANT VELOCITY/LÖBRO-ZREČE
18.	4419314	BEARING - AXLE Ø 30 x Ø 60 x 37
19.	46633924 (50)	KEY - AXLE SHAFT
20.	4390949	HUB - AXLE SHAFT
21.	4307324	WASHER
22.	4307325	NUT - AXLE STUB
23.	46633894 (50)	SHAFT - AXLE L/H (LÖBRO - FIAT)
	46633898 (50)	SHAFT - AXLE L/H / ZWICKAU - DDR
	46633902 (50)	SHAFT - AXLE L/H / LÖBRO - ZREČE
24.	10571770	WASHER - LOCK
25.	16100811	NUT M 8
26.	46631576 (50)	COVER - C.V. JOINT
27.	46633923 (50)	SHAFT - AXLE L/H
28.	46631588 (50)	COLLAR - C.V. JOINT BOOT
29.	46631583 (50)	BUSHING - AXLE SHAFT R/H
30.	46631585 (50)	WASHER - AXLE SHAFT R/H
31.	46631586 (50)	RING - AXLE SHAFT R/H
32.	46631581 (50)	HUB - AXLE SHAFT R/H
33.	46634963 (50)	KEY



DIFFERENTIAL GEARS

24.04

1.	4249329	CASE - DIFFERENTIAL
2.	4177463	BEARING - DIFFERENTIAL
3.	4250995	BOLT - DIFFERENTIAL
4.	4249333	TAB - LOCK/DIFFERENTIAL
5.	4177465	RING 0,85
	4335139	RING 0,85
6.	4177466	RING 0,90
	4335140	RING 0,90
7.	4177467	RING 0,95
	4335141	RING 0,95
8.	4177468	RING 1,00
	4335142	RING 1,00
9.	4177469	RING 1,05
	4335143	RING 1,05
10.	4177470	RING 1,10
	4335144	RING 1,10
11.	4177471	RING 1,15
	4335145	RING 1,15
12.	4177459	PINION - DIFFERENTIAL
13.	4206774	GEAR - RING/DIFFERENTIAL
	5950720 (58)	GEAR - RING/DIFFERENTIAL (*1)
14.	4262336	SHAFT - PINION
15.	4177459	PINION - DIFFERENTIAL
16.	4371722	DIFFERENTIAL
	5952431 (58)	DIFFERENTIAL (*1)
17.	4371721	GEAR - DIFFERENTIAL
18.	4177463	BEARING - DIFFERENTIAL
19.	4177449	RING 0,5
20.	4177450	RING 0,6
21.	4177451	RING 0,7
22.	4177452	RING 0,8
23.	4177453	RING 0,9
24.	4177454	RING 1,0
25.	4177455	RING 1,1

NOTE 1: 2 ND TYPE USED FROM CAR No 1809 VIN 448339